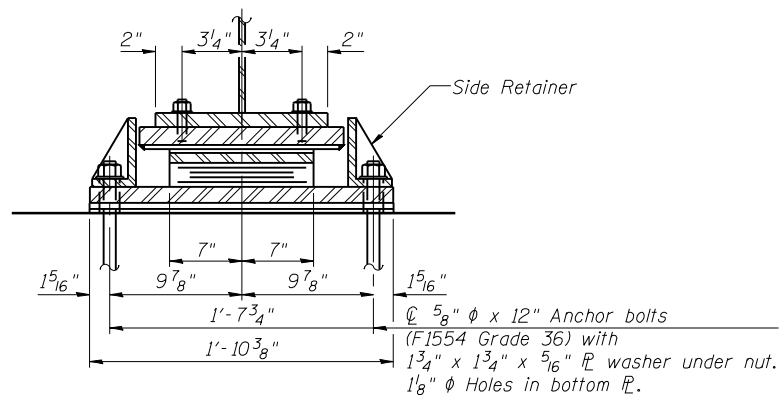
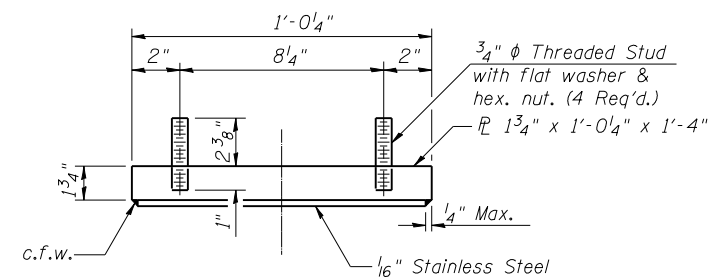


ELEVATION AT ABUT. & PIER 5

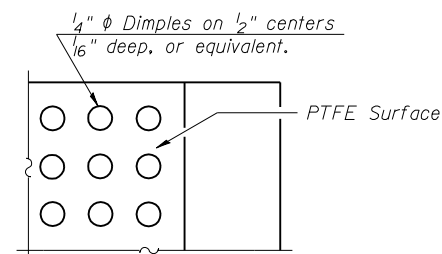


SECTION A-A

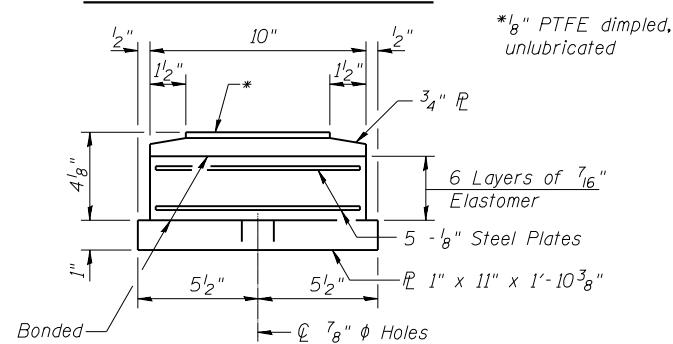
**TYPE II ELASTOMERIC EXP. BRG. - PIER 5 & ABUTMENTS**



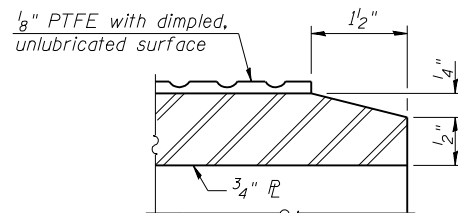
TOP BEARING ASSEMBLY



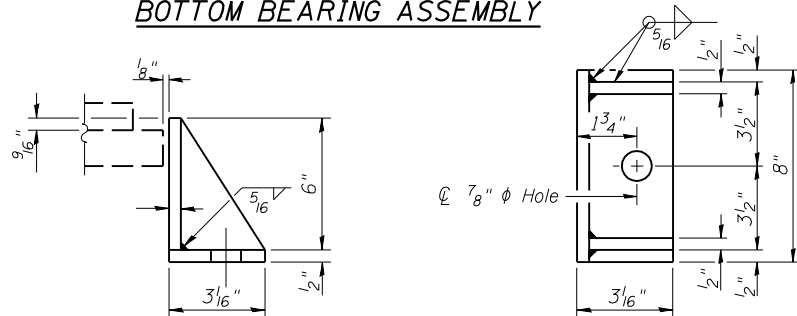
PLAN-PTFE SURFACE



BOTTOM BEARING ASSEMBLY

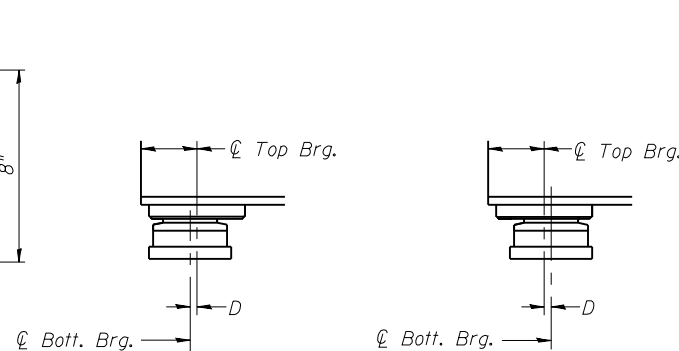


SECTION THRU PTFE



SIDE RETAINER - PIER 5 & ABUTMENTS

Equivalent rolled angle with stiffeners will be allowed in lieu of welded plates.



BELOW 50°F.

ABOVE 50°F.

(Move bott. brg. away from fixed brg.) (Move boif. brg. toward fixed brg.)

**SETTING ANCHOR BOLTS AT EXP. BRG.**

D=1/8" per each 100' of expansion for every 15° temp. change from the normal temp. of 50°F.

**Notes:**

Anchor bolts shall be ASTM F1554 all-thread (or an Engineer-approved alternate material) of the grade(s) and diameter(s) specified. ASTM A307 Grade C anchor bolts may be used in lieu of ASTM F1554 Grade 36 (Fy=36ksi). The corresponding specified grade of AASHTO M314 anchor bolts may be used in lieu of ASTM F1554.

Anchor bolts at fixed bearings may be either cast in place or installed in holes drilled after the supported member is in place.

Anchor bolts for Type II bearings shall be placed in holes drilled in the concrete through holes in the bottom bearing plate after members are in place. Side retainers shall be placed after bolts are installed.

Drilled and set anchor bolts shall be installed according to Article 521.06 of the Standard Specifications.

Side retainers and other steel members required for the elastomeric bearing assembly shall be included in the cost of Elastomeric Bearing Assembly, Type II.

The 1/8" PTFE sheet shall be bonded directly to the top steel plate with a two-component, medium viscosity epoxy resin, conforming to the requirements of the Federal Specification MMM-A-134, Type I. The bond agent shall be applied on the full area of the contact surfaces.

Bonding of 1/8" PTFE sheet during vulcanizing process will be permitted provided the process and method of adjusting assembly height is approved by the Engineer.

The structural steel plates of the Bearing Assembly shall conform to the requirements of AASHTO M 270 Grade 50W.

Two 1/8 in. adjusting shims shall be provided for each bearing in addition to all other plates or shims and placed as shown on bearing details.

The anchor bolt sizes and grades shown constitute a calculated seismic structural fuse. Substitution of higher diameter and/or grade anchor bolts will not be allowed.

**BILL OF MATERIAL**

Item	Unit	Total
Elastomeric Bearing Assembly Type II	Each	120
Anchor Bolts, 5/8"	Each	96

I-2E-2

7-1-10

(Sheet 2 of 2)



JOB = 2265.1  
 FILE = 0540055.0056-72E10-28-Bearings.dgn  
 DATE = 9/9/2011

DESIGNED - ZTB  
 CHECKED - MDC  
 DRAWN - TJD  
 CHECKED - ZTB

REVISED -  
 REVISED -  
 REVISED -  
 REVISED -

STATE OF ILLINOIS  
 DEPARTMENT OF TRANSPORTATION

BEARING DETAILS  
 STRUCTURE NO. 054-0055 (NB) & STRUCTURE NO. 054-0056 (SB)

SHEET NO. 28 OF 39 SHEETS

F.A.I. RTE.	SECTION	COUNTY	TOTAL SHEETS	SHEET NO.
55	D6 LOGAN CO BR 2011	LOGAN	224	189
				CONTRACT NO. 72E10
ILLINOIS FED. AID PROJECT				