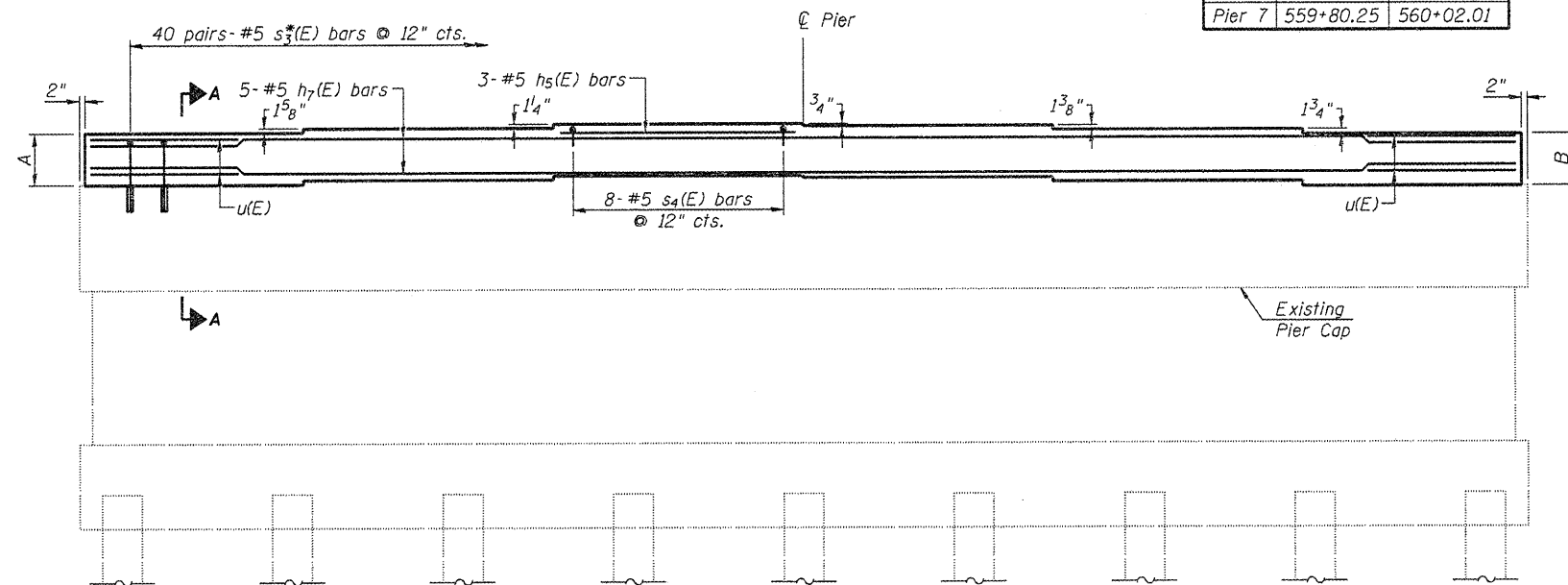


(S.N. 054-0055)
 (S.N. 054-0056)

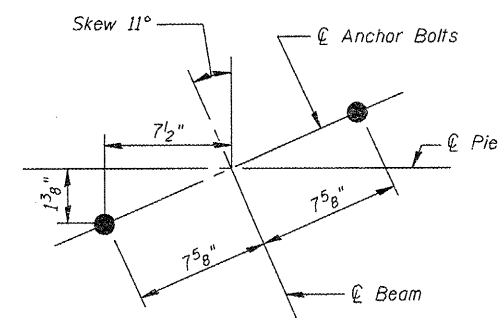
PLAN

STATIONS

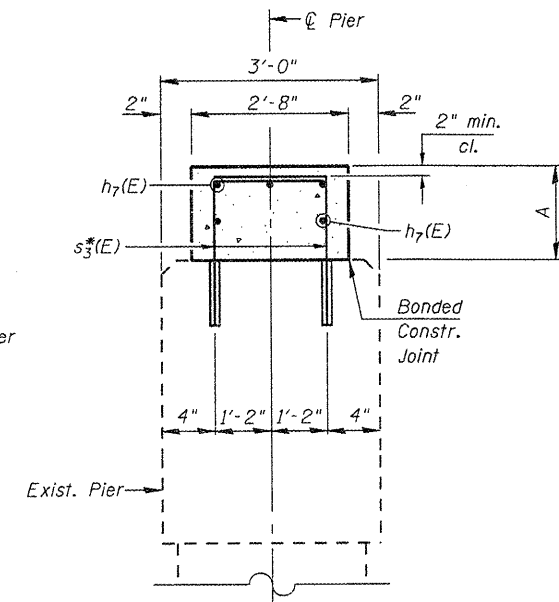
	N.B.	S.B.
Pier 3	557+37.25	557+59.01
Pier 7	559+80.25	560+02.01



ELEVATION
 (Looking in the direction of Traffic)



ANCHOR BOLT LAYOUT AT PIERS 3 & 7

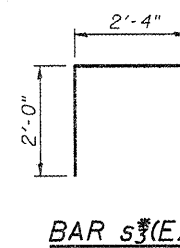


SECTION A-A

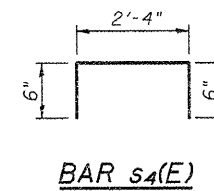
FOUR (4) PIERS BILL OF MATERIAL

Bar	No.	Size	Length	Shape
h5(E)	12	#5	7'-0"	
h7(E)	20	#5	39'-2"	
s3*(E)	320	#5	4'-4"	
s4(E)	32	#5	3'-4"	
u(E)	16	#5	10'-2"	
Concrete Structures		Cu. Yd.	25.0	
Reinforcement Bars, Epoxy Coated		Pound	2,640	

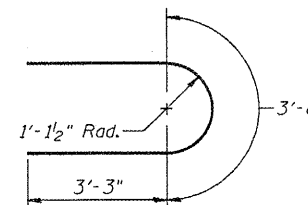
Notes:
 Reinforcement Bars designated (E) shall be epoxy coated.
 s3*(E) bars shall be grouted into drilled holes in accordance with Section 584 of the Standard Specifications. Minimum embedment = 9".
 Space reinforcement in cap to miss anchor bolts.
 Pour steps monolithically with cap.
 All edges of proposed concrete shall have standard 3/4" chamfers unless noted otherwise.



BAR s3*(E)



BAR s4(E)



BAR u(E)

BEARING SEAT ELEVATIONS
 S.N. 054-0055 (N.B.)

		G	H	I	J	K	L
Pier 3	Existing	569.08	569.22	569.32	569.26	569.14	569.00
	Proposed	570.58	570.72	570.83	570.77	570.65	570.50
Pier 7	Existing	569.08	569.22	569.32	569.26	569.14	569.00
	Proposed	570.58	570.72	570.83	570.77	570.65	570.50

BEARING SEAT ELEVATIONS
 S.N. 054-0056 (S.B.)

		A	B	C	D	E	F
Pier 3	Existing	569.00	569.15	569.26	569.32	569.22	569.08
	Proposed	570.46	570.61	570.73	570.79	570.68	570.54
Pier 7	Existing	569.00	569.15	569.26	569.32	569.22	569.08
	Proposed	570.46	570.61	570.73	570.79	570.68	570.54

VALUES OF A & B

	S.N. 054-0055		S.N. 054-0056	
	A	B	A	B
Pier 3	1'-6"	1'-6"	1'-5 1/2"	1'-5 1/2"
Pier 7	1'-6"	1'-6"	1'-5 1/2"	1'-5 1/2"

NOTE

Plan elevations relative to the existing structure have been taken from existing plans and reduced by 0.38 feet to match benchmark datum.



JOB = 2265.1
 FILE = 0540055_0056-72E10-36-Piers.dgn
 DATE = 9/29/2011

DESIGNED - ZTB
 CHECKED - MDC
 DRAWN - TJD
 CHECKED - ZTB

REVISED -
 REVISED -
 REVISED -
 REVISED -

STATE OF ILLINOIS
DEPARTMENT OF TRANSPORTATION

PIERS 3 & 7
STRUCTURE NO. 054-0055 (NB) & STRUCTURE NO. 054-0056 (SB)

SHEET NO. 36 OF 39 SHEETS

F.A.I. RTE.	SECTION	COUNTY	TOTAL SHEETS	SHEET NO.
55	D6 LOGAN CO BR 2011	LOGAN	224	197
			CONTRACT NO.	72E10
ILLINOIS FED. AID PROJECT				