

STATE OF ILLINOIS  
 DEPARTMENT OF TRANSPORTATION  
 DIVISION OF HIGHWAYS

**PROPOSED  
 HIGHWAY PLANS**

VARIOUS ROUTES  
 SECTION D6 BDGE DECK SEALING 2011-1

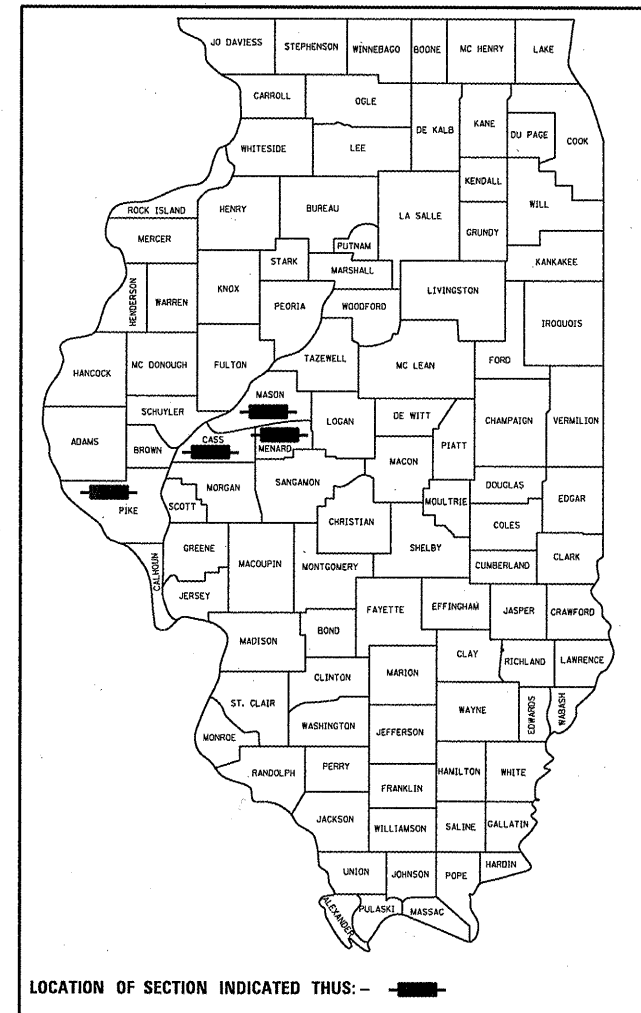
BRIDGE DECK SEALING  
 VARIOUS COUNTIES

C-96-053-11

F.A. RTE.	SECTION	COUNTY	TOTAL SHEETS	SHEET NO.
..	..	..	9	1
ILLINOIS			CONTRACT NO. 72E25	

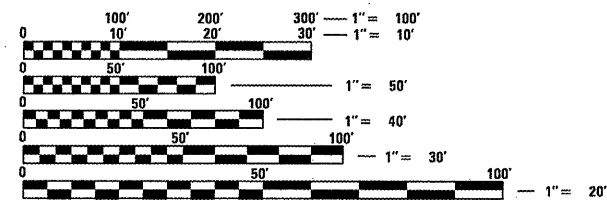
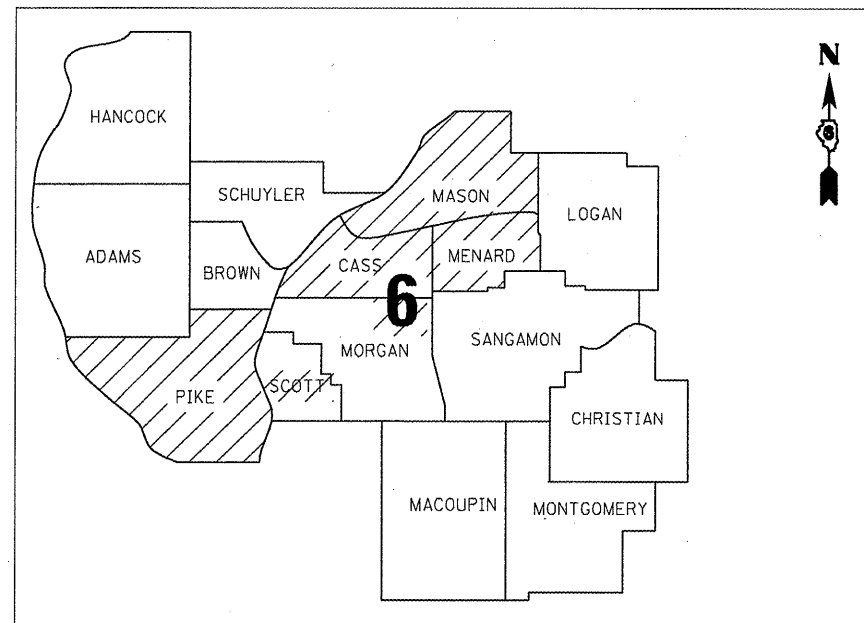
- VARIOUS ROUTES
- .. BDGE DECK SEALING 2011-1
- ... VARIOUS

D-96-053-11



FOR INDEX OF SHEETS, SEE SHEET NO. 2

FOR HIGHWAY STANDARDS, SEE SHEET NO. 2



FULL SIZE PLANS HAVE BEEN PREPARED USING STANDARD ENGINEERING SCALES. REDUCED SIZED PLANS WILL NOT CONFORM TO STANDARD SCALES. IN MAKING MEASUREMENTS ON REDUCED PLANS, THE ABOVE SCALES MAY BE USED.

J.U.L.I.E.  
 JOINT UTILITY LOCATION INFORMATION FOR EXCAVATION  
 1-800-892-0123  
 OR 811

PROJECT ENGINEER: JEFF MYERS 217-782-4761  
 TEAM MANAGER: TOM COX 217-524-7940

CONTRACT NO. 72E25

STATE OF ILLINOIS  
 DEPARTMENT OF TRANSPORTATION  
 DIVISION OF HIGHWAYS

SUBMITTED August 24 20 11  
Roger Z. Orsak  
 DEPUTY DIRECTOR OF HIGHWAYS, REGION ENGINEER

Oct 14 20 11  
Scott E. Stitt P.E.  
 acting ENGINEER OF DESIGN AND ENVIRONMENT

Oct 14 20 11  
Christine M. Reed  
 DIRECTOR OF HIGHWAYS, CHIEF ENGINEER

PRINTED BY THE AUTHORITY  
 OF THE STATE OF ILLINOIS