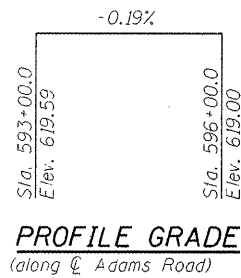


Benchmarks:
 #4 Rebar w/cap buried 1", Sta. 592+56.71, O/S Rt. 15.49', Elev. 619.804.
 #4 Rebar w/cap buried 1", Sta. 596+13.25, O/S Lt. 14.06', Elev. 618.054.
 See Roadway Plans for cross ties.

Existing Structure: None

INDEX OF SHEETS

- 1 GENERAL PLAN & ELEVATION
- 2 GENERAL DATA AND WALL PLAN
- 3 TYPICAL WALL SECTION
- 4-5 BORING LOGS



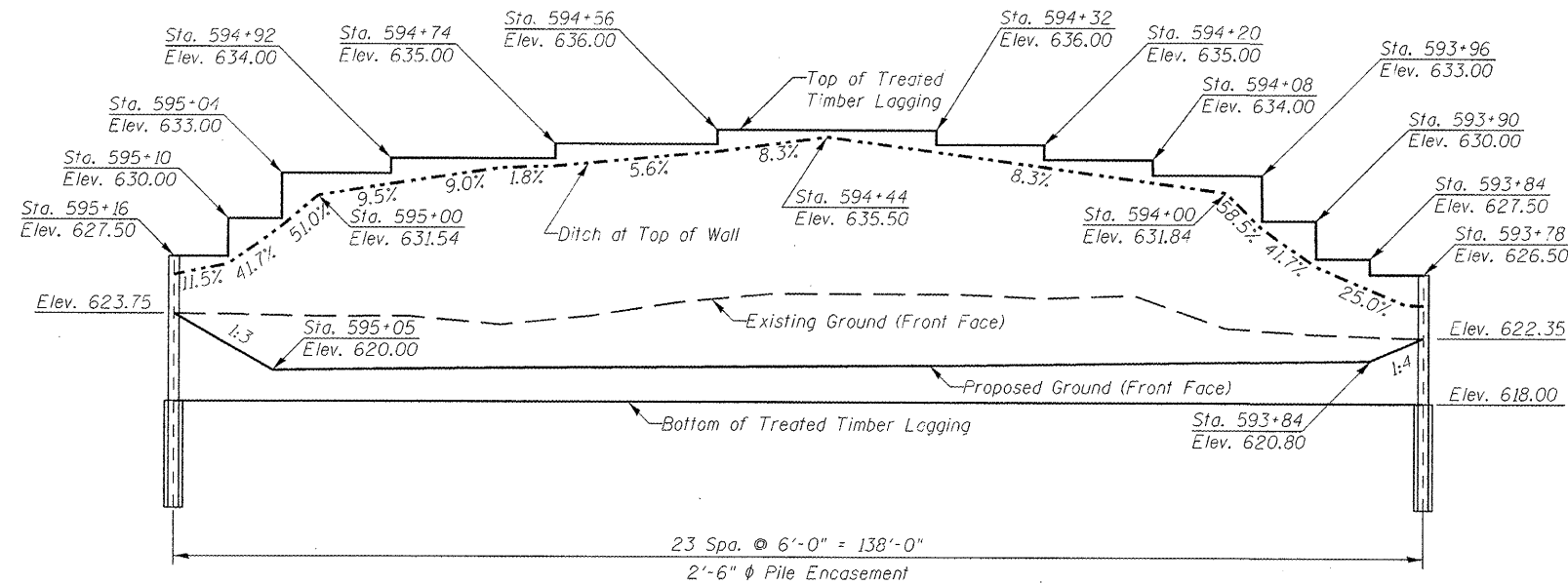
DESIGN SPECIFICATIONS
 2002 AASHTO

DESIGN STRESSES
 FIELD UNITS

$f_b = 1,400$ psi (Treated Timber Lagging)
 $f_y = 36,000$ psi (M270 Grade 36)

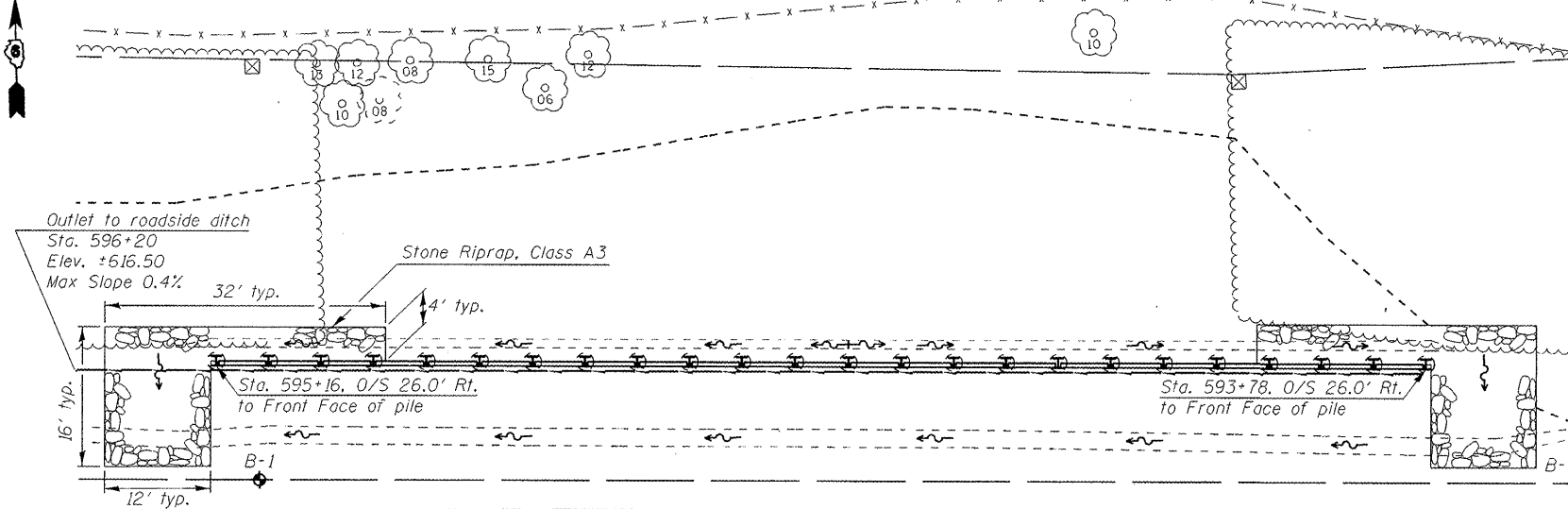


Expires 11/30/12



ELEVATION

(Looking at Front Face of Wall)



PLAN

RIW - 4th P.M.

18	U.S. 24	16	15
19	20	21	22
29	F.A.S. 2582	28	27
31	32	33	34

Proposed Improvement

LOCATION SKETCH

GENERAL PLAN & ELEVATION
ADAMS ROAD (OLD US ROUTE 67)
F.A.S. RTE. 2582 - SEC. (45)I-2
SCHUYLER COUNTY
STA. 593+78 TO STA. 595+16
S.N. 085-7900

DESIGNED Greg Heckel, Jay Edwards
 CHECKED Steve V. Beran
 DRAWN Jay Edwards
 CHECKED SVB, GBH, JDE

EXAMINED
 PASSED
 ENGINEER OF BRIDGE DESIGN
 ENGINEER OF BRIDGES AND STRUCTURES

DATE 10/14/11
 REVISED
 REVISED

STATE OF ILLINOIS
 DEPARTMENT OF TRANSPORTATION

SHEET NO. 1 OF 5 SHEETS

F.A.S. RTE. 2582	SECTION (45)I-2	COUNTY SCHUYLER	TOTAL SHEETS 18	SHEET NO. 6
CONTRACT NO. 72E37			ILLINOIS FED. AID PROJECT	