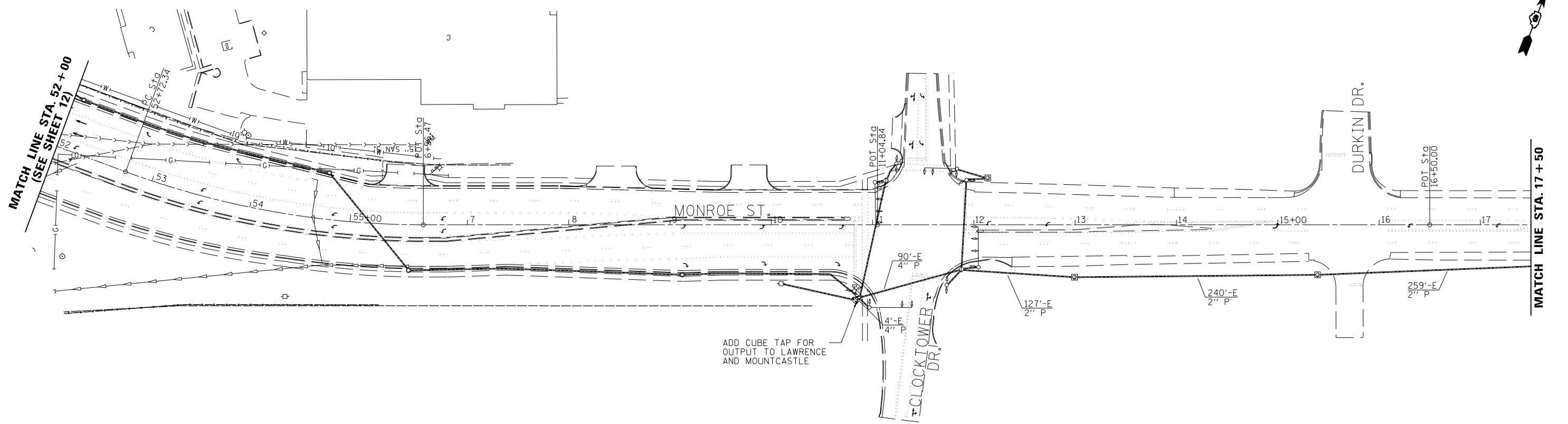


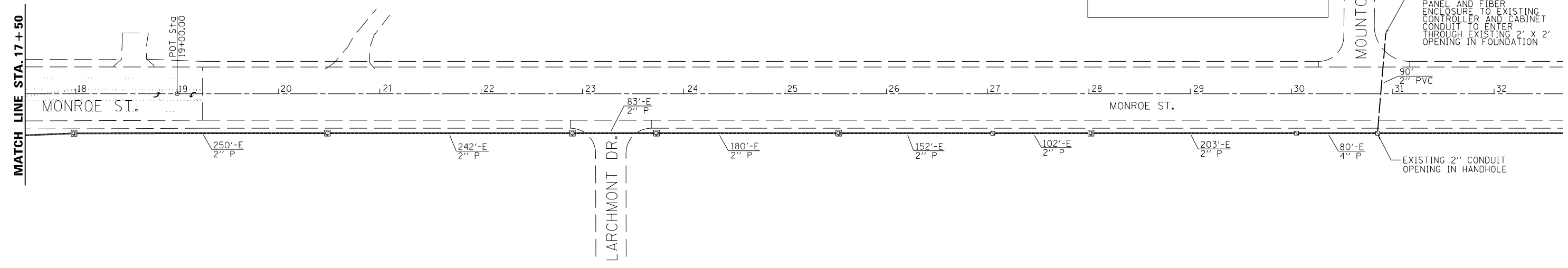
MATCH LINE STA. 52+00  
(SEE SHEET 12)

MATCH LINE STA. 17+50



MATCH LINE STA. 17+50

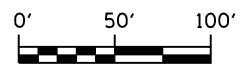
MOUNTCASTLE RD.



CLOCKTOWER TO MOUNTCASTLE INTERCONNECT QUANTITIES	
FIBER OPTIC CABLE IN CONDUIT NO. 62.5/125, MM12F SM12F	2,159 FEET
UNDERGROUND CONDUIT, PVC, 2" DIA	90 FEET
TRANSCEIVER - FIBER OPTIC	1 EACH

ADD FIBER OPTIC TRANSCEIVER INTERFACE PANEL AND FIBER ENCLOSURE TO EXISTING CONDUIT TO ENTER THROUGH EXISTING 2' X 2' OPENING IN FOUNDATION

EXISTING 2" CONDUIT OPENING IN HANDHOLE



USER NAME = sparksgw	DESIGNED -	REVISED -	<b>STATE OF ILLINOIS DEPARTMENT OF TRANSPORTATION</b>	<b>INTERCONNECT PLAN VETERANS PKWY. FROM OLD JACKSONVILLE RD. TO KOKE MILL RD.</b>			F.A. RTE.	SECTION	COUNTY	TOTAL SHEETS	SHEET NO.	
PLOT SCALE = 100.0000' / in.	DRAWN - BDM	REVISED -		SCALE:	SHEET NO.	OF SHEETS	STA.	TO STA.	*	SANGAMON	42	15
PLOT DATE = Aug-25-2011 09:06:42AM	CHECKED - JSA	REVISED -							* D6 TRAF SIGNAL MOD 2011-1	CONTRACT NO. 72E38		
	DATE - 7/15/09	REVISED -							ILLINOIS FED. AID PROJECT			

FILE NAME = c:\pw\work\p1dot\sparksgw\1d0278783\0672E38 sht 15.dgn