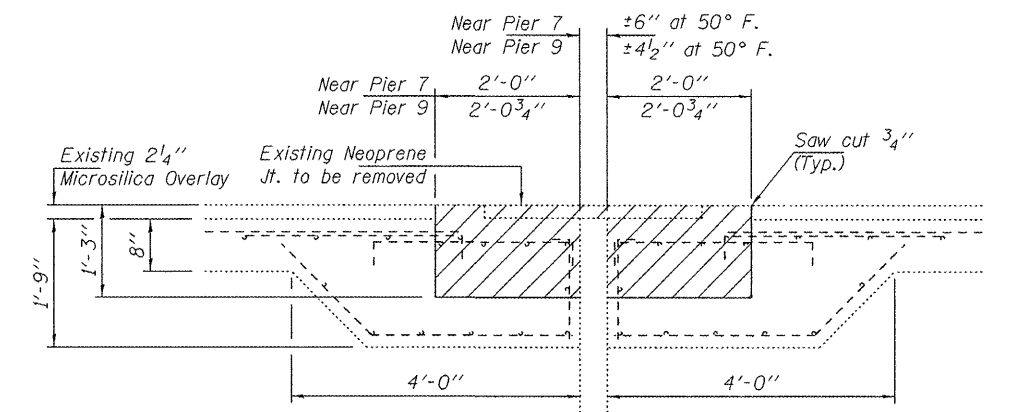


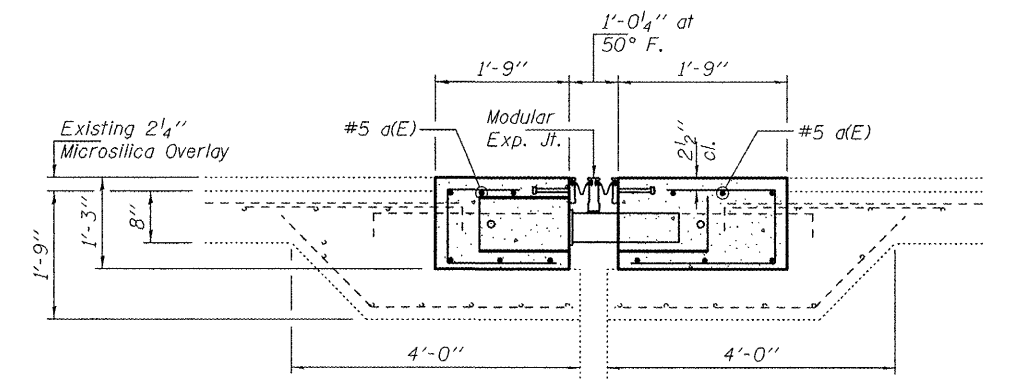
REMOVAL PLAN AT HINGE "B"

CONCRETE PLAN AT HINGE "B"

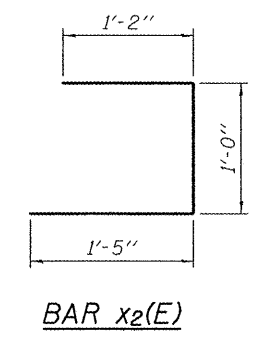
Note:
 Hatched areas indicate concrete sections to be removed and replaced. Perimeters of concrete removal areas shall be saw cut 3/4" prior to the removal of concrete.
 The Modular Expansion Joint at Hinge "B" shall have a total movement capability of 9 1/4".
 See sheet 4 of 9 for Parapet Details & d1(E) bars.
 In reference to Article 520.04 of the Standard Specifications, the expansion length handled by Hinge "B" located adjacent to Pier 7 is 589 feet. The expansion length handled by Hinge "B" located adjacent to Pier 9 is 438 feet.



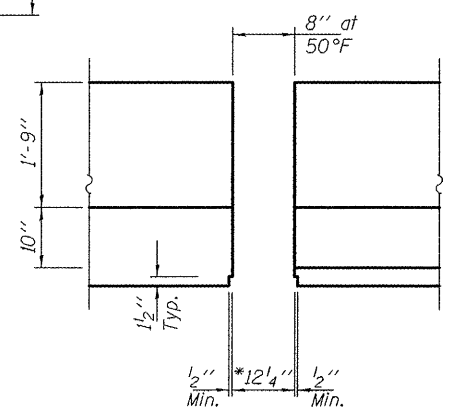
SECTION C-C



SECTION D-D



BAR x2(E)



PARAPET ELEVATION

(Sliding R's not shown for clarity)
 See sheet 2 of 8 for Sliding R Details.
 Cost of sliding plates are included in the Modular Expansion Joint pay item.

* Dimension for Modular Expansion Joint at 50°F.

HINGE "B"
 BILL OF MATERIAL

Bar	No.	Size	Length	Shape	
a(E)	48	#5	20'-2"	—	
d(E)	24	#4	2'-9"	—	
d1(E)	24	#5	6'-1"	⊥	
x2(E)	56	#4	3'-7"	⊏	
Concrete Removal				Cu. Yd.	17.8
Concrete Superstructure				Cu. Yd.	15.4
Reinforcement Bars, Epoxy Coated				Pound	1480
Modular Expansion Joint, 10'				Foot	84

DESIGNED - MKC	EXAMINED - <i>James F. Jaffe</i>	DATE - OCTOBER 7, 2011
CHECKED - GGE	ACTING ENGINEER OF STRUCTURAL SERVICES	
DRAWN - Kyle M. Steffen	PASSED - <i>Carl Pauer</i>	
CHECKED - MKC	ACTING ENGINEER OF BRIDGES AND STRUCTURES	

STATE OF ILLINOIS
 DEPARTMENT OF TRANSPORTATION

JOINT REMOVAL & REPLACEMENT DETAILS AT HINGE "B"
 SN 075-0123 (W.B.)
 SHEET NO. 3 OF 9 SHEETS

F.A.I. RTE.	SECTION	COUNTY	TOTAL SHEETS	SHEET NO.
72	(75,86)BJR-1	PIKE	13	7
CONTRACT NO. 72E62			ILLINOIS FED. AID PROJECT	