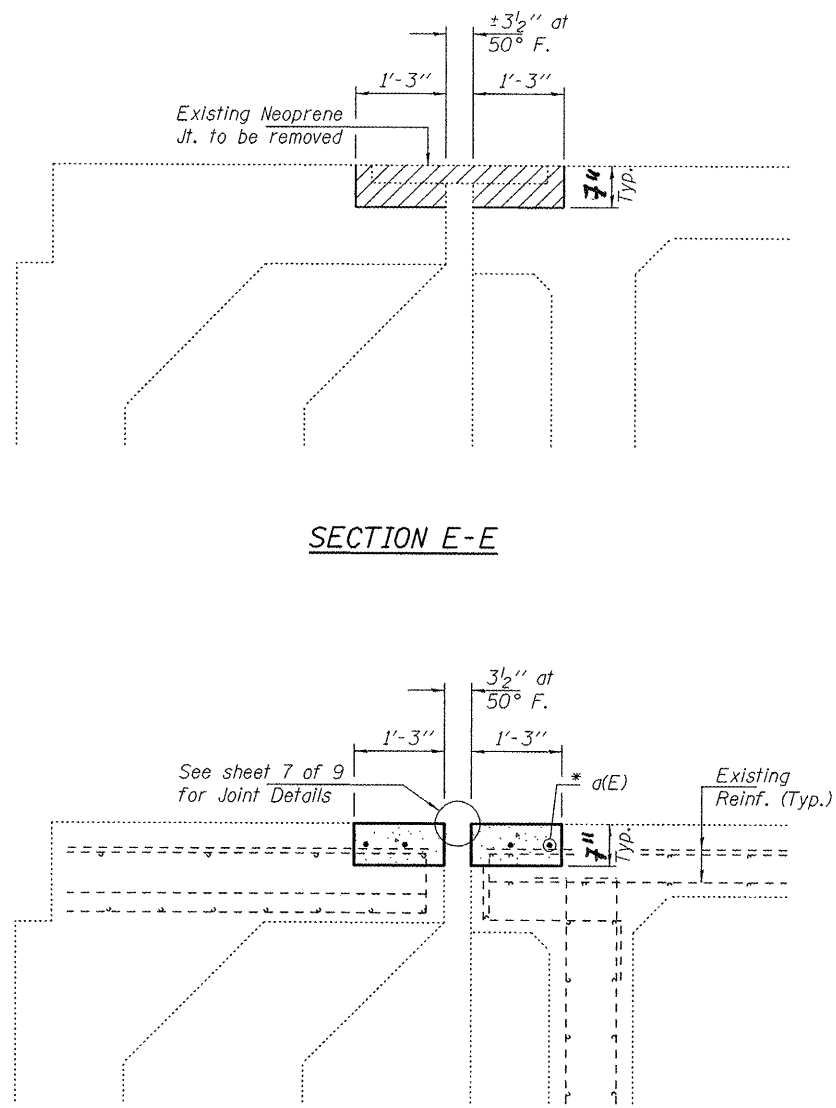


REMOVAL PLAN AT WEST ABUTMENT

REPLACEMENT PLAN AT WEST ABUTMENT

Notes:
 Hatched areas indicate concrete sections to be removed and replaced.
 Perimeters of concrete removal areas shall be saw cut $\frac{3}{4}$ " prior to the removal of concrete.
 Extreme care shall be exercised in the removal of concrete due to the shallow slab depth from the web of the box girder out to the parapet.
 See sheet 4 of 9 for Parapet Details & $d_1(E)$ bars.



SECTION E-E

SECTION F-F

* The $d(E)$ bar closest to the expansion joint shall be placed a minimum of 5" away from the edge of the joint opening.

WEST ABUTMENT BILL OF MATERIAL

Bar	No.	Size	Length	Shape
$d(E)$	8	#5	20'-2"	—
$d(E)$	8	#4	2'-9"	—
$d_1(E)$	8	#5	6'-1"	⊔
Concrete Removal			Cu. Yd.	2.0
Concrete Superstructure			Cu. Yd.	2.0
Reinforcement Bars, Epoxy Coated			Pound	240

DESIGNED - MKC	EXAMINED - <i>James F. Jaffe</i> ACTING ENGINEER OF STRUCTURAL SERVICES	DATE - OCTOBER 7, 2011
CHECKED - GGE	PASSED - <i>Carl Perry</i> ACTING ENGINEER OF BRIDGES AND STRUCTURES	
DRAWN - Kyle M. Steffen		
CHECKED - MKC GGE		

STATE OF ILLINOIS DEPARTMENT OF TRANSPORTATION

JOINT REMOVAL & REPLACEMENT DETAILS AT WEST ABUTMENT SN 075-0123 (W.B.)

F.A.I. RTE. 72	SECTION (75.86)BJR-1	COUNTY PIKE	TOTAL SHEETS 13	SHEET NO. 9
CONTRACT NO. 72E62				