

F.A.S. RTE.	SECTION	COUNTY	TOTAL SHEETS	SHEET NO.
2704	12B-1(1) & 12B-1(2)	CLAY	39	1
ILLINOIS			CONTRACT NO. 74116	

**STATE OF ILLINOIS
DEPARTMENT OF TRANSPORTATION
DIVISION OF HIGHWAYS**

**PROPOSED
HIGHWAY PLANS**

**F.A.S. ROUTE 2704 (OLD U.S. 50)
SECTION 12B-1(1) & 12B-1(2)
PROJECT ACRS-2704(001)
BRIDGE REPLACEMENT
CLAY COUNTY**

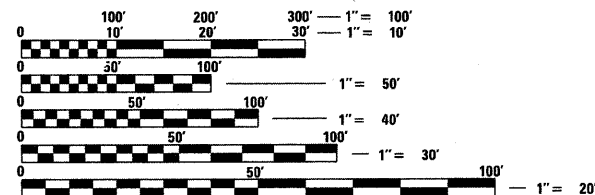
C-97-080-05

FOR INDEX OF SHEETS, SEE SHEET NO. 2

**2008 ADT = 1300 (EAST OF XENIA)
2008 ADT = 600 (WEST OF XENIA)**

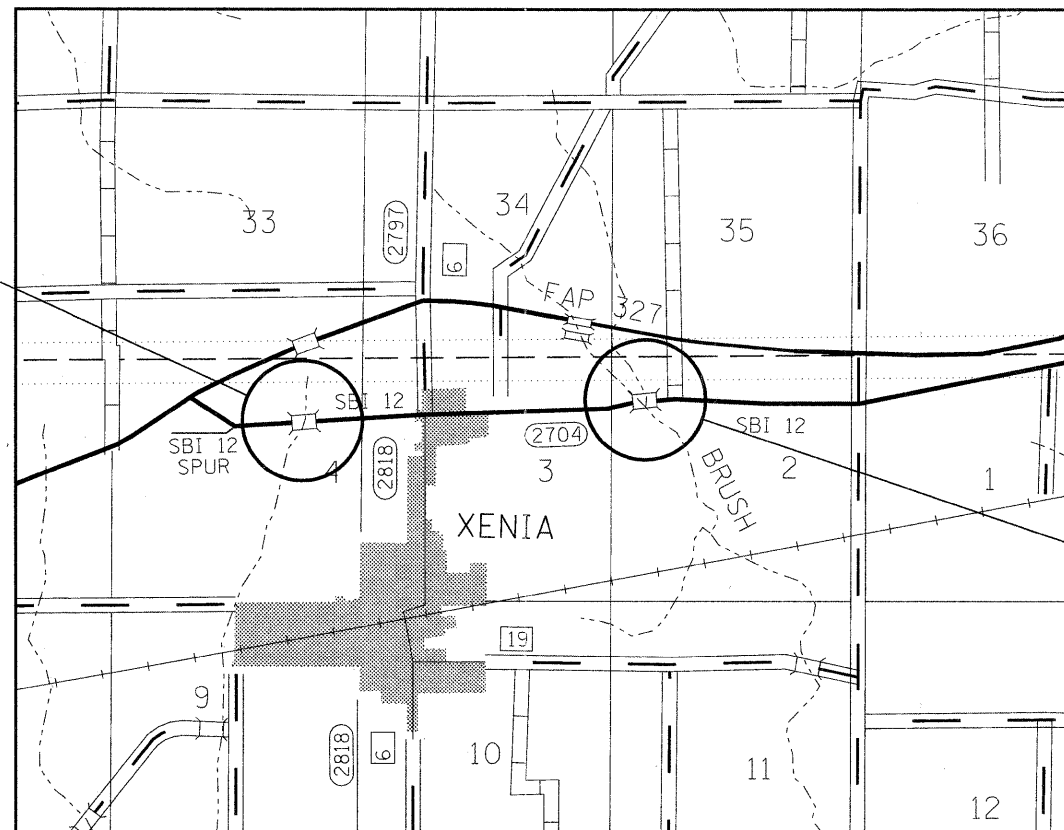


**PROJECT LOCATION
SECTION 12B-1(1)
STRUCTURE #013-2012
STATION 407 + 98**



FULL SIZE PLANS HAVE BEEN PREPARED USING STANDARD ENGINEERING SCALES. REDUCED SIZED PLANS WILL NOT CONFORM TO STANDARD SCALES. IN MAKING MEASUREMENTS ON REDUCED PLANS, THE ABOVE SCALES MAY BE USED.

**J.U.L.I.E.
JOINT UTILITY LOCATION INFORMATION FOR EXCAVATION
1-800-892-0123
OR 811**



**PROJECT LOCATION
SECTION 12B-1(2)
STRUCTURE #013-2013
STATION 334 + 46**

GROSS LENGTH = 925 FT. = 0.175 MILE
NET LENGTH = 925 FT. = 0.175 MILE

**PROJECT ENGINEER: TOM RONAN
PROJECT MANAGER: JENNIFER WENTHE
PHONE: 217-342-8320
CONTRACT NO. 74116**

**STATE OF ILLINOIS
DEPARTMENT OF TRANSPORTATION
DIVISION OF HIGHWAYS**

SUBMITTED Feb 3 2011
Roger J. Dunkelba
DEPUTY DIRECTOR OF HIGHWAYS, REGION ENGINEER

May 13 2011
Scott E. Stitt P.E. Ia
ACTING ENGINEER OF DESIGN AND ENVIRONMENT

May 13 2011
Christine M. Reed Ia
DIRECTOR OF HIGHWAYS, CHIEF ENGINEER

**PRINTED BY THE AUTHORITY
OF THE STATE OF ILLINOIS**