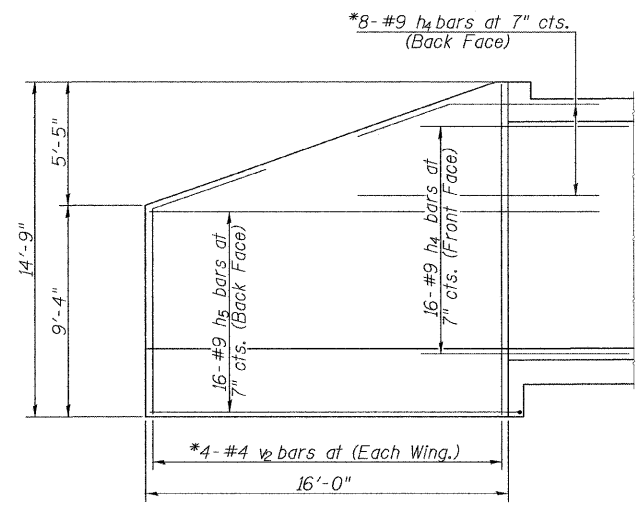


ELEVATION



WINGWALL ELEVATION

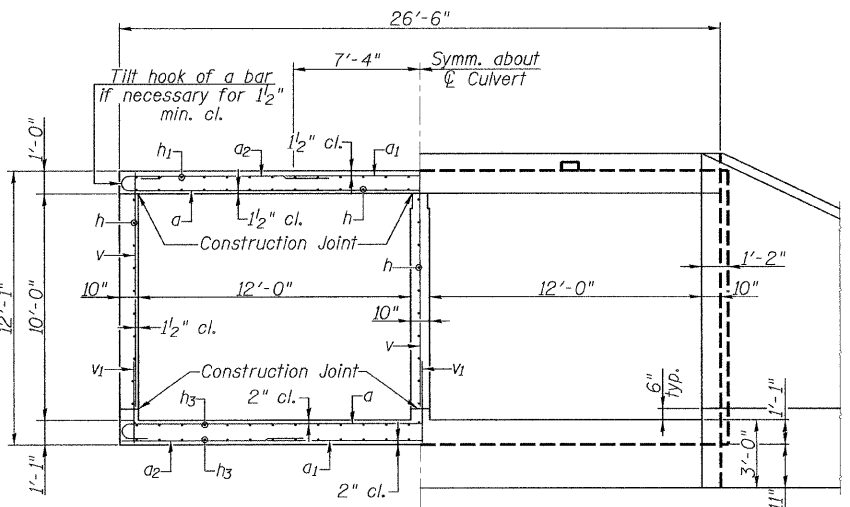
\* Bend bars in field as required

MIN. BAR LAPS  
#7 bars = 2'-8"

BILL OF MATERIAL

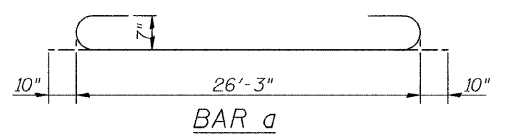
Bar	No.	Size	Length	Shape
a	148	#7	27'-11"	
a1	148	#7	14'-8"	—
a2	150	#5	7'-6"	—
d	50	#4	4'-6"	
h	120	#7	26'-3"	—
h1	54	#4	25'-7"	—
h2	8	#7	26'-5"	—
h3	108	#5	25'-9"	—
h4	96	#9	12'-0"	
h5	64	#9	20'-10"	
h6	6	#4	27'-1"	—
s	25	#4	5'-1"	
s1	25	#4	5'-3"	
v	304	#4	10'-1"	—
v1	300	#4	2'-10"	—
v2	16	#4	14'-5"	—
Concrete Box Culverts			Cu. Yd.	198.0
Reinforcement Bars			Pound	36410

Bars indicated thus 11 x 2 - #7 etc. indicates 11 lines of bars with 2 lengths per line.

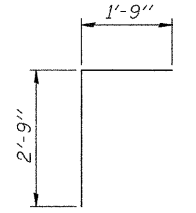


HALF SECTION THRU BARRELS

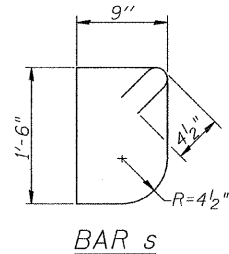
HALF END ELEVATION



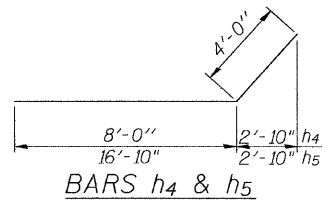
BAR a



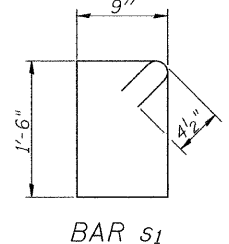
BAR d



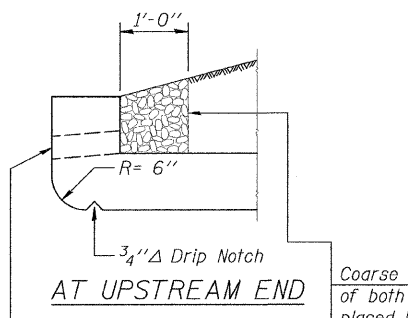
BAR s



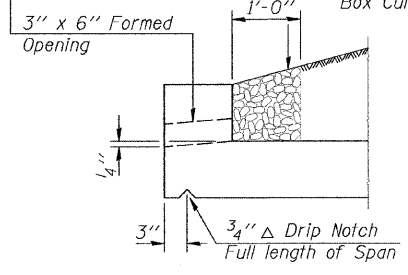
BARS h4 & h5



BAR s1



AT UPSTREAM END



AT DOWNSTREAM END

DRAIN DETAIL

Coarse aggregate full length of both headwalls. To be placed by Grading Contractor. Cost included with Concrete Box Culverts.

CULVERT DETAILS  
STRUCTURE NO. 013-2013



Allen Henderson & Associates, Inc.  
Civil and Structural Engineers Springfield, IL.  
62703 Phone: (217)544-8033 IL. Design Firm  
No. 184-001907

SHEET NO. 4 5 SHEETS	F.A.S. RTE. 2704	SECTION 12B-1(2)	COUNTY CLAY	TOTAL SHEETS 39	SHEET NO. 26
	CONTRACT NO. 74116			FED. ROAD DIST. NO. ILLINOIS FED. AID PROJECT	