

F.A.P. RTE.	SECTION	COUNTY	TOTAL SHEETS	SHEET NO.
320	(102BY)B-1	MOULTRIE	48	1
FED. ROAD DIST. NO.	ILLINOIS	CONTRACT NO. 74280		

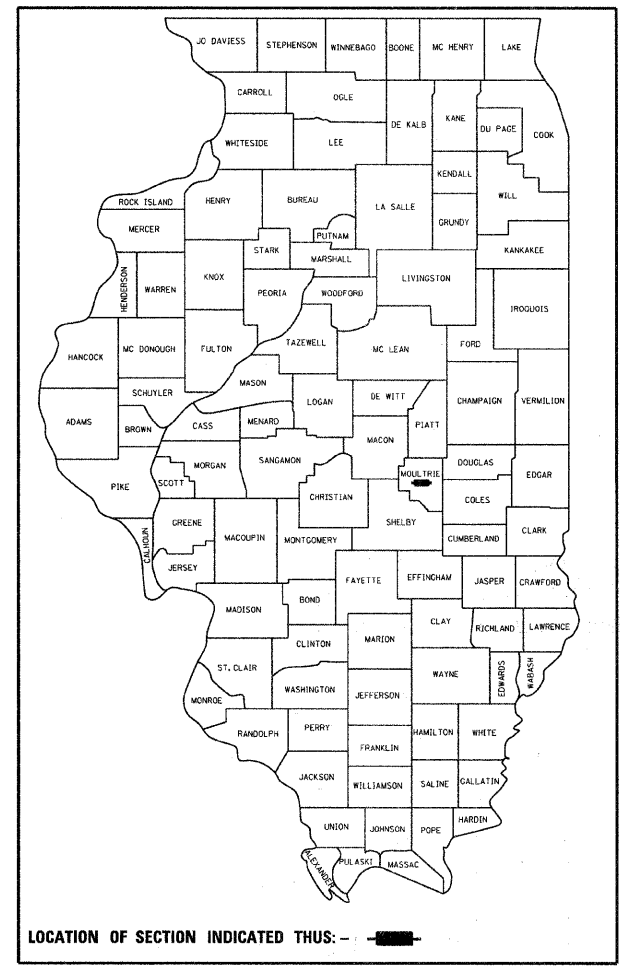
STATE OF ILLINOIS
DEPARTMENT OF TRANSPORTATION
DIVISION OF HIGHWAYS

**PROPOSED
HIGHWAY PLANS**

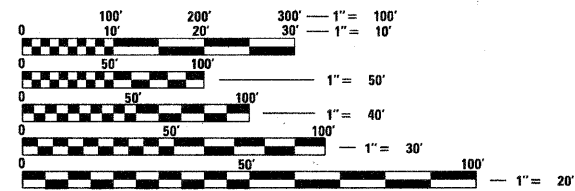
F.A.P. ROUTE 320 (IL. RTE. 121)
SECTION (102BY)B-1
PROJECT ACBRF-0320(036)
BRIDGE REPLACEMENT
MOULTRIE COUNTY
C-97-113-07

FOR INDEX OF SHEETS, SEE SHEET NO. 2

ADT = 5,500 (2010)



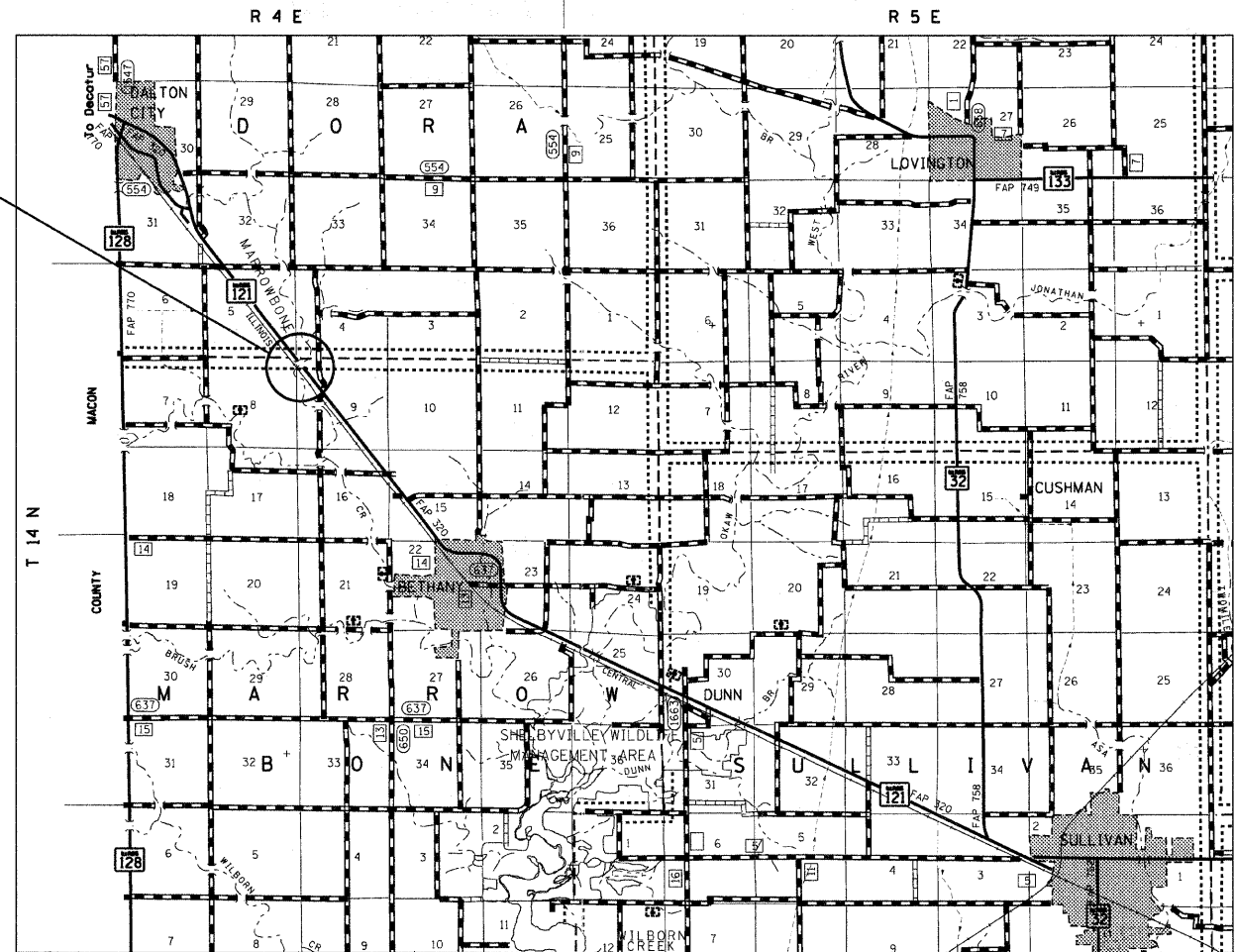
FAP 320 (IL 121)
SECTION (102BY)B-1
MOULTRIE COUNTY
STRUCTURE # 070-0050
STATION 139+14.00



FULL SIZE PLANS HAVE BEEN PREPARED USING STANDARD ENGINEERING SCALES. REDUCED SIZED PLANS WILL NOT CONFORM TO STANDARD SCALES. IN MAKING MEASUREMENTS ON REDUCED PLANS, THE ABOVE SCALES MAY BE USED.

J.U.L.I.E.
JOINT UTILITY LOCATION INFORMATION FOR EXCAVATION
1-800-892-0123
OR 811

PROJECT ENGINEER: TOM RONAN
PROJECT MANAGER: KEVIN BRADY
TOWNSHIP: DORA, MARROWBONE
CONTRACT NO. 74280



GROSS LENGTH = 500 FT. = .095 MILE
NET LENGTH = 500 FT. = .095 MILE

STATE OF ILLINOIS
DEPARTMENT OF TRANSPORTATION
DIVISION OF HIGHWAYS

SUBMITTED August 11 2011
Gregory J. Brunkel
DEPUTY DIRECTOR OF HIGHWAYS, REGIONAL ENGINEER

October 14 2011
Scott E. Stitt, P.E.
acting ENGINEER OF DESIGN AND ENVIRONMENT

October 14 2011
Christine M. Road
DIRECTOR OF HIGHWAYS, CHIEF ENGINEER

PRINTED BY THE AUTHORITY
OF THE STATE OF ILLINOIS