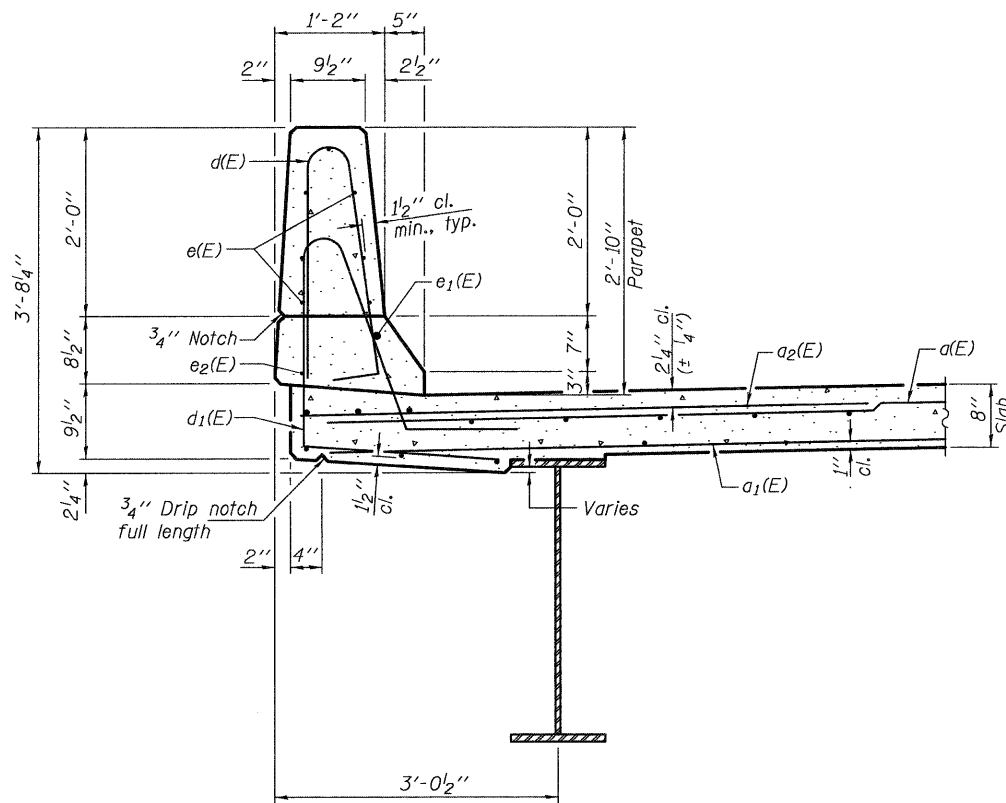
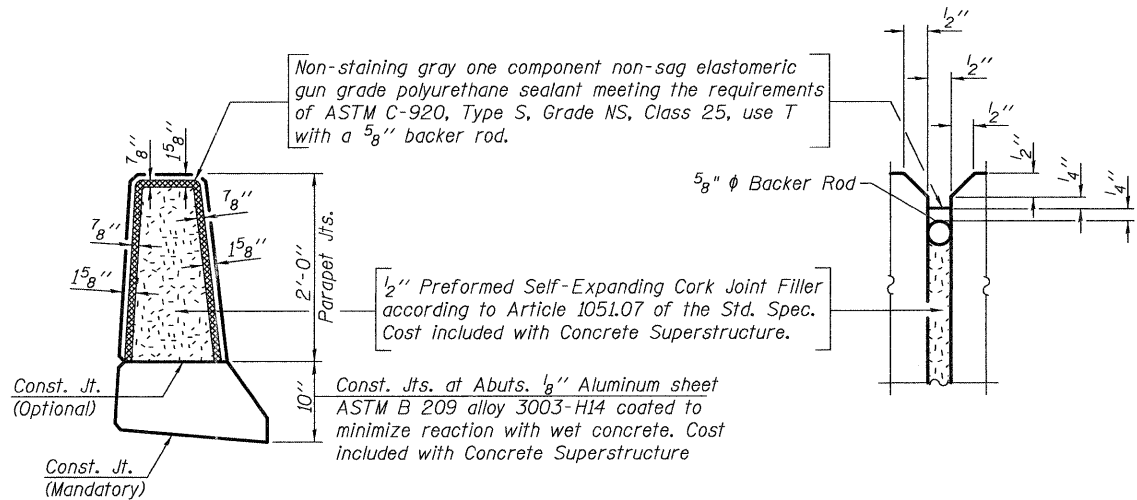


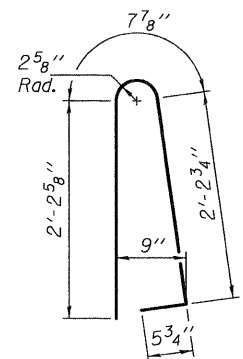
**INSIDE ELEVATION OF EAST PARAPET**  
(Looking East - West parapet similar)



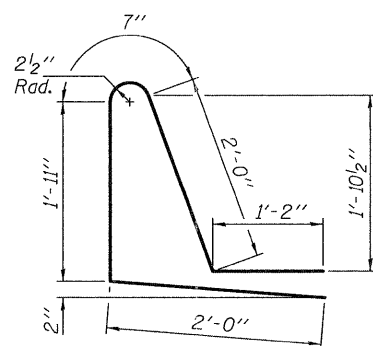
**SECTION THRU PARAPET**



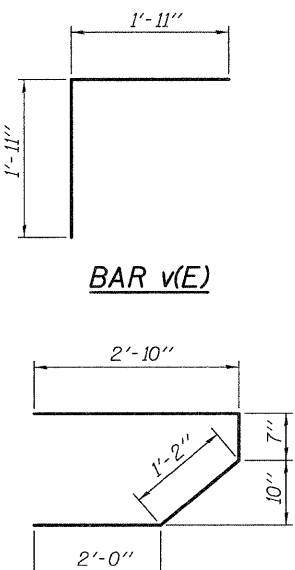
**PARAPET JOINT DETAILS**



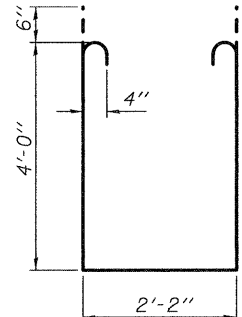
**BAR d(E)**



**BAR d1(E)**



**BAR s(E)**



**BAR s1(E)**

**MIN. BAR LAPS**  
(Parapet)  
#4 bar = 2'-0"  
#8 bar = 5'-2"

**SUPERSTRUCTURE BILL OF MATERIAL**

Bar	No.	Size	Length	Shape
a(E)	412	#5	21'-1"	—
a1(E)	252	#5	20'-10"	—
a2(E)	412	#6	6'-0"	—
b(E)	138	#5	32'-5"	—
b1(E)	168	#5	24'-9"	—
d(E)	206	#5	5'-7"	U
d1(E)	206	#5	7'-8"	U
e(E)	84	#4	15'-5"	—
e1(E)	6	#8	34'-8"	—
e2(E)	8	#4	24'-11"	—
m1(E)	20	#6	21'-3"	—
m2(E)	24	#6	10'-9"	—
m3(E)	8	#6	7'-0"	—
m4(E)	4	#6	2'-8"	—
m5(E)	4	#6	3'-5"	—
s(E)	92	#5	6'-7"	U
s1(E)	84	#4	11'-2"	U
v(E)	88	#5	3'-10"	Γ
Reinforcement Bars, Epoxy Coated		Pound	34410	
Concrete Superstructure		Cu. Yds.	158.3	

Bars indicated thus 1 x 3-#4 etc. indicates 1 line of bars with 3 lengths per line.

DESIGNED - Stephen M. Ryan	EXAMINED - <i>Thomas J. Demagala</i>	DATE - 10/11/2011
CHECKED - F. Teklehaimanot	PASSED - <i>Thomas J. Demagala</i>	
DRAWN - h.t. duong		
CHECKED - SMR/FT		

STATE OF ILLINOIS  
DEPARTMENT OF TRANSPORTATION

SUPERSTRUCTURE DETAILS  
STRUCTURE NO. 070-0050  
SHEET NO. 9 OF 21 SHEETS

F.A.P. RTE. 320	SECTION (I02BY1B-1)	COUNTY MOULTRIE	TOTAL SHEETS 43	SHEET NO. 25
			CONTRACT NO. 74280	
ILLINOIS FED. AID PROJECT				