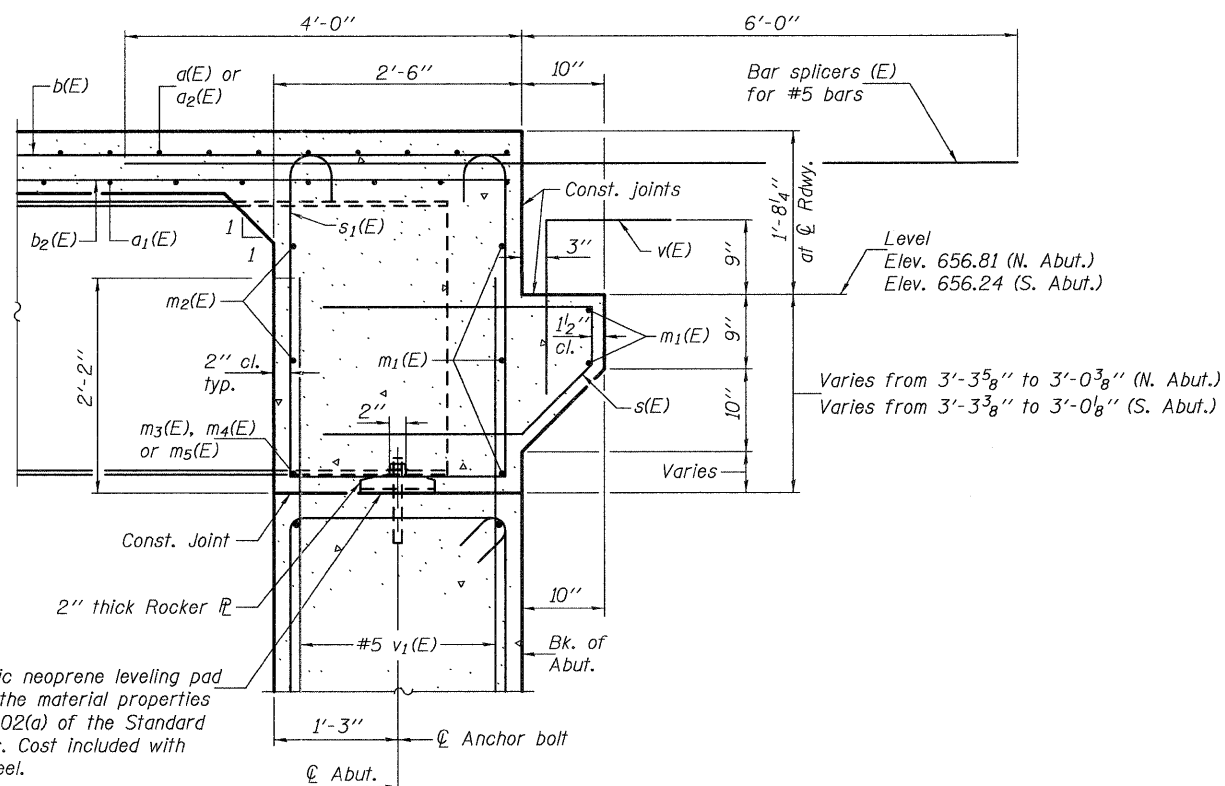


DIAPHRAGM ELEVATION AT SOUTH ABUTMENT

(Looking South - North abutment similar)



SECTION A-A

Notes: Reinforcement bars in diaphragm are billed with superstructure on sheet 9 of 21.
 Concrete in diaphragm is included with Concrete Superstructure on sheet 9 of 21.
 For details of bars s(E) & s₁(E) see sheet 9 of 21.
 See sheet 13 of 21 for holes thru web for m₂(E) bars.
 For bar splicer (E) details see sheet 17 of 21.
 See sheets 15 & 16 of 21 for vertical v₁(E) bars extending out of the abutment caps into the abutment diaphragms.

MIN. BAR LAP
 #6 bar = 3'-4"

DESIGNED - Stephen M. Ryan
 CHECKED - F. Teklehaimanot
 DRAWN - h.t. duong
 CHECKED - SMR/FT

EXAMINED
 PASSED
 ENGINEER OF BRIDGE DESIGN
 ENGINEER OF BRIDGES AND STRUCTURES

DATE - 10/11/2011

STATE OF ILLINOIS
 DEPARTMENT OF TRANSPORTATION

DIAPHRAGM DETAILS
 STRUCTURE NO. 070-0050

SHEET NO. 10 OF 21 SHEETS

F.A.P. RTE.	SECTION	COUNTY	TOTAL SHEETS	SHEET NO.
320	(102BY)B-1	MOULTRIE	48	26
CONTRACT NO. 74280				
ILLINOIS FED. AID PROJECT				