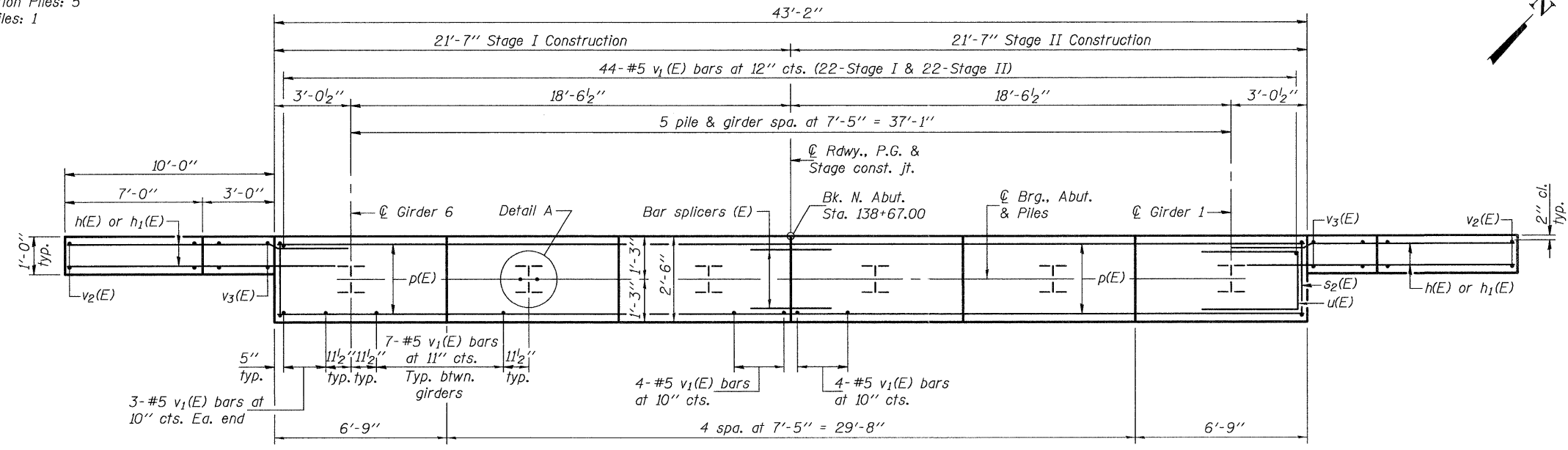


SEC. THRU ABUT.

PILE DATA

Type: Steel HP12x63
 Nominal Required Bearing: 470 Kips
 Factored Resistance Available: 235 Kips
 Est. Length: 65'
 No. Production Piles: 5
 No. Test Piles: 1

ELEVATION
 (Looking North)

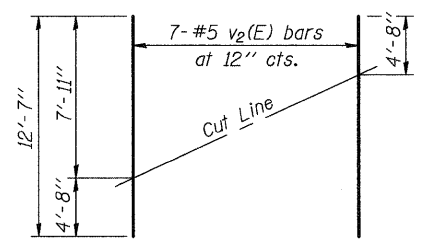


PLAN

BILL OF MATERIAL

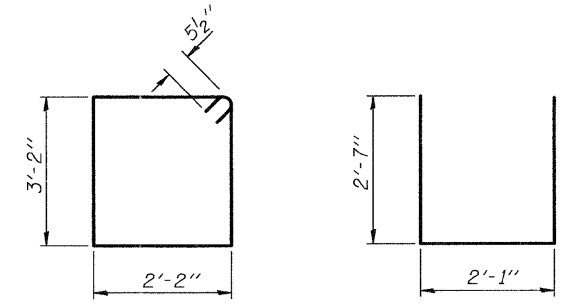
Bar	No.	Size	Length	Shape
h(E)	24	#6	12'-6"	—
h1(E)	4	#5	12'-4"	—
p(E)	18	#5	21'-3"	—
s2(E)	38	#5	11'-7"	□
u(E)	8	#6	7'-3"	□
v1(E)	86	#5	4'-4"	—
v2(E)	14	#5	12'-7"	—
v3(E)	12	#5	7'-11"	—
Structure Excavation			Cu. Yd.	46.0
Concrete Structures			Cu. Yd.	19.8
Reinforcement Bars, Epoxy Coated			Pound	2120
Furnishing Steel Piles HP12x63			Foot	325
Driving Piles			Foot	325
Test Pile Steel HP12x63			Each	1
Concrete Encasement			Cu. Yd.	2.1
Anchor Bolts 1" φ			Each	12

Notes: Four steps monolithically with cap.
 For details of piles and concrete encasement, see sheet 18 of 21.
 Bend h(E) bars in field to miss piles and girders.



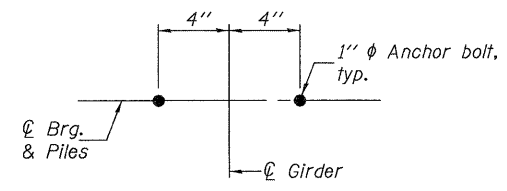
FIELD CUTTING DIAGRAM

Order v2(E) full length. Cut as shown and use remainder of bars in opposite face.



BAR s2(E)

BAR u(E)



DETAIL A