

GENERAL NOTES

1. MIXTURES FOR JOINTS, CRACKS, AND FLANGEWAYS SHALL BE PAID FOR ACCORDING TO ARTICLE 109.04 OF THE STANDARD SPECIFICATIONS.
2. THE OFFSETS TO ALL NEW INLETS IN CURBED ROADWAYS ARE TO THE EDGE OF PAVEMENT UNLESS OTHERWISE INDICATED. OFFSETS TO DRAINAGE STRUCTURES NOT IN THE CURB AND GUTTER ARE TO THE CENTER OF STRUCTURE. THE RIM ELEVATION FOR INLETS IN THE CURB AND GUTTER REPRESENTS THE ELEVATION OF THE EDGE OF PAVEMENT. FOR STRUCTURES NOT IN THE CURB AND GUTTER, RIM ELEVATIONS REPRESENT THE TOP OF THE STRUCTURE.
3. THE THICKNESS OF THE BITUMINOUS MIXTURE SHOWN ON THE PLANS IS THE NOMINAL THICKNESS. DEVIATIONS FROM THE NOMINAL THICKNESS WILL BE PERMITTED WHEN SUCH DEVIATIONS OCCUR DUE TO IRREGULARITIES IN THE EXISTING SURFACE OR BASE ON WHICH THE BITUMINOUS MIXTURE IS PLACED.
4. ALL TEMPORARY PAVEMENT MARKINGS SHALL BE PLACED IN SUCH A MANNER SO AS NOT TO INTERFERE WITH THE PLACEMENT OF PERMANENT PAVEMENT MARKINGS.
5. HIGH EARLY STRENGTH CONCRETE MIX SHALL BE USED FOR ALL PCC PATCHING AND NO ADDITIONAL PAYMENT WILL BE ALLOWED.
6. THE CONTRACTOR SHALL BE AWARE THAT THE PROJECT SITE MAY CONTAIN ARCHEOLOGICAL EXCAVATED HOLES. THE CONTRACTOR SHALL FILL THE HOLES WITH EMBANKMENT IN ACCORDANCE WITH THE STANDARD SPECIFICATIONS AND TO THE SATISFACTION OF THE ENGINEER. PAYMENT FOR THIS WORK SHALL BE ACCORDING TO THE EARTH EXCAVATION PAY ITEM IN THE PLANS.
7. EXCEPT WHERE DESIGNATED OTHERWISE, THE LOCATIONS AND/OR DEPTHS OF UNDERGROUND UTILITIES SHOWN HAVE BEEN TAKEN FROM OFFICE RECORD INFORMATION FURNISHED BY THE UTILITY OWNERS AND THE SUE SURVEYS. ALL UNDERGROUND UTILITIES MUST BE CONSIDERED APPROXIMATE.
8. PROTECTIVE COAT SHALL BE APPLIED TO ALL GUTTER FLAGS, FACE OF CURB, MEDIAN SURFACE AND PAVEMENT.
9. AN ESTIMATED QUANTITY OF 100 TONS OF AGGREGATE FOR TEMPORARY ACCESS HAS BEEN INCLUDED IN THIS CONTRACT FOR THE PURPOSE OF MAINTAINING ACCESS TO PRIVATE PROPERTY AND SIDE ROADS THROUGH CONSTRUCTION OPERATIONS DURING THIS CONTRACT.
10. THE PROPOSED EMBANKMENT SHALL BE BENCHED INTO THE EXISTING SLOPES TO THE SATISFACTION OF THE ENGINEER.
11. THE CONTRACTOR SHALL VERIFY ALL DIMENSIONS AND CONDITIONS IN THE FIELD PRIOR TO CONSTRUCTION AND ORDERING OF MATERIALS.
12. CONTRACTORS SHALL LOCATE ALL SANITARY SEWER LATERALS AND ENGINEER SHALL ADJUST PROPOSED STORM SEWER TO AVOID SEWERS.
13. THE IDOT HIGHWAY STANDARDS LATEST REVISION NUMBERS SHALL APPLY TO THIS CONTRACT.
14. CONFLICTS MAY OCCUR BETWEEN THE ROADWAY PLANS AND RIGHT-OF-WAY PLANS. THE RIGHT-OF-WAY PLANS SHALL TAKE PRECEDENCE IN CONFLICTS IN RIGHT-OF-WAY OR EASEMENTS. THE ROADWAY PLANS SHALL TAKE PRECEDENCE IN ITEMS FOR CONSTRUCTION.
15. TOPSOIL SHALL BE USED ONLY WHERE SHOWN ON THE LANDSCAPING PLANS. IT WILL NOT BE USED AT ANY OTHER LOCATIONS.
16. ANY CHANGES TO THICKNESS OF AGGREGATE BASE COURSE, TYPE A 12" TO DRAIN TO UNDERDRAINS OR OTHERWISE WILL BE INCLUDED IN THE COST OF THE PAY ITEM. NO ADDITIONAL COMPENSATION WILL BE MADE.

17. ALL MANHOLE LIDS OR INLET GRATES THAT ARE REMOVED DURING THIS CONTRACT SHALL REMAIN PROPERTY OF THE ILLINOIS DEPARTMENT OF TRANSPORTATION AND SHALL BE REMOVED WITHOUT DAMAGE AND TRANSPORTED TO THE FOLLOWING ADDRESS: BOWMAN AVENUE PUMP STATION, 728 EXCHANGE AVENUE, EAST ST. LOUIS, ILLINOIS - IF THERE ARE ANY QUESTIONS PLEASE CONTACT PETE SAWYER AT 618-346-3275.
18. THE CONTRACTOR SHALL REPLACE EXISTING SEWERS THAT ARE DAMAGED DURING CONSTRUCTION AT NO ADDITIONAL COST TO THE DEPARTMENT. DAMAGED SEWERS SHALL BE REPLACED IN KIND.
19. ALL DRAINAGE STRUCTURES AND STORM SEWERS TO BE REMOVED ARE SHOWN IN THE REMOVAL PLANS.
20. THE DEPARTMENT STRONGLY ENCOURAGES THE PRIME CONTRACTOR AND THEIR APPROVED SUB-CONTRACTORS TO HIRE MINORITY, WOMEN, AND DISADVANTAGED INDIVIDUALS FROM ITS FEDERALLY FUNDED HIGHWAY CONSTRUCTION CAREERS TRAINING PROGRAM (HCCTP) TO HELP MEET WORKFORCE AND TRAINEE GOALS. THIS PROGRAM IS TRAINING MINORITIES, WOMEN, AND DISADVANTAGED INDIVIDUALS IN HIGHWAY CONSTRUCTION-RELATED SKILLS, E.G., MATH FOR THE TRADES, JOB READINESS, TECHNICAL SKILLS COURSEWORK (CARPENTRY, CONCRETE FLATWORK, BLUEPRINT READING, SITE PLANS, SITE WORK, TOOLS USE, ETC.) AND OSHA 10 HOUR CERTIFICATION, TO PREPARE THEM FOR A CAREER IN THE HIGHWAY CONSTRUCTION TRADES. GRADUATES ARE WELL TRAINED AND READY TO BECOME PRODUCTIVE ENTRY-LEVEL CONSTRUCTION WORKERS. CONTACT THE DISTRICT 8 EEO OFFICE AT 618-346-3360 AND/OR THE HCCTP COORDINATOR AT 618-874-6528 TO LEARN MORE ABOUT THE PROGRAM AND FOR ASSISTANCE IN MEETING WORKFORCE AND TRAINEE GOALS.
21. CURB CUTS SHALL BE INSTALLED WHERE CURB RAMP MEETS THE PROPOSED CURB AND GUTTER. A 3/4" EXPANSION JOINT SHALL BE PROVIDED BETWEEN THE BACK OF CURB AND THE CURB RAMP AS SHOWN IN STANDARD 424001.

22. ANY SPECIAL PROVISION AND PLAN REFERENCES TO COMMUNITY ICON OR PRECAST CONCRETE COMMUNITY ICON WILL BE CHANGED TO ARCHITECTURAL PRECAST CONCRETE PANEL.
 23. ANY SPECIAL PROVISION AND PLAN REFERENCES TO PCC PVT 10 JT COLORED, PORTLAND CEMENT CONCRETE PAVEMENT 10" JT COLORED, OR PORTLAND CEMENT CONCRETE PAVEMENT 10" JOINTED COLORED WILL BE CHANGED TO PORTLAND CEMENT CONCRETE PAVEMENT 10" (JOINTED) SPECIAL.
 24. ANY SPECIAL PROVISION AND PLAN REFERENCES TO BRIDGE APPROACH PAVEMENT REPAIR WILL BE CHANGED TO APPROACH SLAB REPAIR.
 25. ANY SPECIAL PROVISION AND PLAN REFERENCES TO REMOVE ABANDONED WATER MAIN WILL BE CHANGED TO WATER MAIN REMOVAL.



SUMMARY OF QUANTITIES

URBAN

CODE NO.	ITEM	UNIT	TOTAL QUANTITIES	100% STATE FUNDED CONSTRUCTION TYPE CODE				
				ROADWAY 0004	9TH ST BRIDGE 0011	ST. CLAIR BRIDGE 0014	LANDSCAPING 0031	TRAINEES 0042
X5210200	HIGH LOAD MULTI-ROTATION BEARINGS, GUIDED EXPANSION, 650K	EACH	6		6			
X6022810	MANHOLES, SANITARY, 4'-DIAMETER, TYPE 1 FRAME, CLOSED LID	EACH	1	1				
X6022820	MANHOLES, SANITARY, 5'-DIAMETER, TYPE 1 FRAME, CLOSED LID	EACH	4	4				
X6022830	MANHOLES, SANITARY, 6'-DIAMETER, TYPE 1 FRAME, CLOSED LID	EACH	1	1				
X6022840	MANHOLES, SANITARY, 7'-DIAMETER, TYPE 1 FRAME, CLOSED LID	EACH	1	1				
X6026054	SANITARY MANHOLES TO BE REMOVED	EACH	12	12				
X6065750	CONCRETE MEDIAN SURFACE, 6 INCH (SPECIAL)	SQ FT	5,033	5,033				
X6370015	CONCRETE BARRIER, SPECIAL, 32" HEIGHT	FOOT	159	159				
X7010216	TRAFFIC CONTROL AND PROTECTION, (SPECIAL)	L SUM	1	1				
X7040600	FURNISH TEMPORARY CONCRETE BARRIER	FOOT	50	50				
X7800205	SIGN PANEL, TYPE 2 (SPECIAL)	SQ FT	180	180				
* X7800200	PAINT PAVEMENT MARKING CURB	FOOT	1,343	1,343				
* X7830068	GROOVING FOR RECESSED PAVEMENT MARKING, LETTERS, NUMBERS AND SYMBOLS	SQ FT	165	165				
* X7830070	GROOVING FOR RECESSED PAVEMENT MARKING 5"	FOOT	11,617	11,617				
* X7830074	GROOVING FOR RECESSED PAVEMENT MARKING 7"	FOOT	164	164				
* X7830076	GROOVING FOR RECESSED PAVEMENT MARKING 9"	FOOT	524	524				
* X7830078	GROOVING FOR RECESSED PAVEMENT MARKING 13"	FOOT	1,015	1,015				
Z0001899	JACK AND REMOVE EXISTING BEARINGS	EACH	13		13			
Z0004556	HOT-MIX ASPHALT SURFACE REMOVAL (DECK)	SQ YD	1,552		1,552			
Z0007801	BUILDING REMOVAL NO. 1	L SUM	1	1				
Z0012754	STRUCTURAL REPAIR OF CONCRETE (DEPTH EQUAL TO OR LESS THAN 5 INCHES)	SQ FT	599		599			
Z0012755	STRUCTURAL REPAIR OF CONCRETE (DEPTH GREATER THAN 5 INCHES)	SQ FT	10		10			
Z0013798	CONSTRUCTION LAYOUT	L SUM	1	1				
Z0016200	DECK SLAB REPAIR (PARTIAL)	SQ YD	408		408			
Z0022800	FENCE REMOVAL	FOOT	5,671	5,671				
Z0024110	FILL DEEP WELL	EACH	4	4				
Z0024112	WELL CONTROL CENTER MODIFICATIONS	L SUM	1	1				
Z0024120	FILL RECORDER WELL	EACH	1	1				
Z0030260	IMPACT ATTENUATORS, TEMPORARY (FULLY REDIRECTIVE, NARROW), TEST LEVEL 3	EACH	9	9				
Z0030330	IMPACT ATTENUATORS, RELOCATE (FULLY REDIRECTIVE), TEST LEVEL 3	EACH	4	4				
Z0046304	PIPE UNDERDRAINS FOR STRUCTURES 4"	FOOT	194		194			

SUMMARY OF QUANTITIES

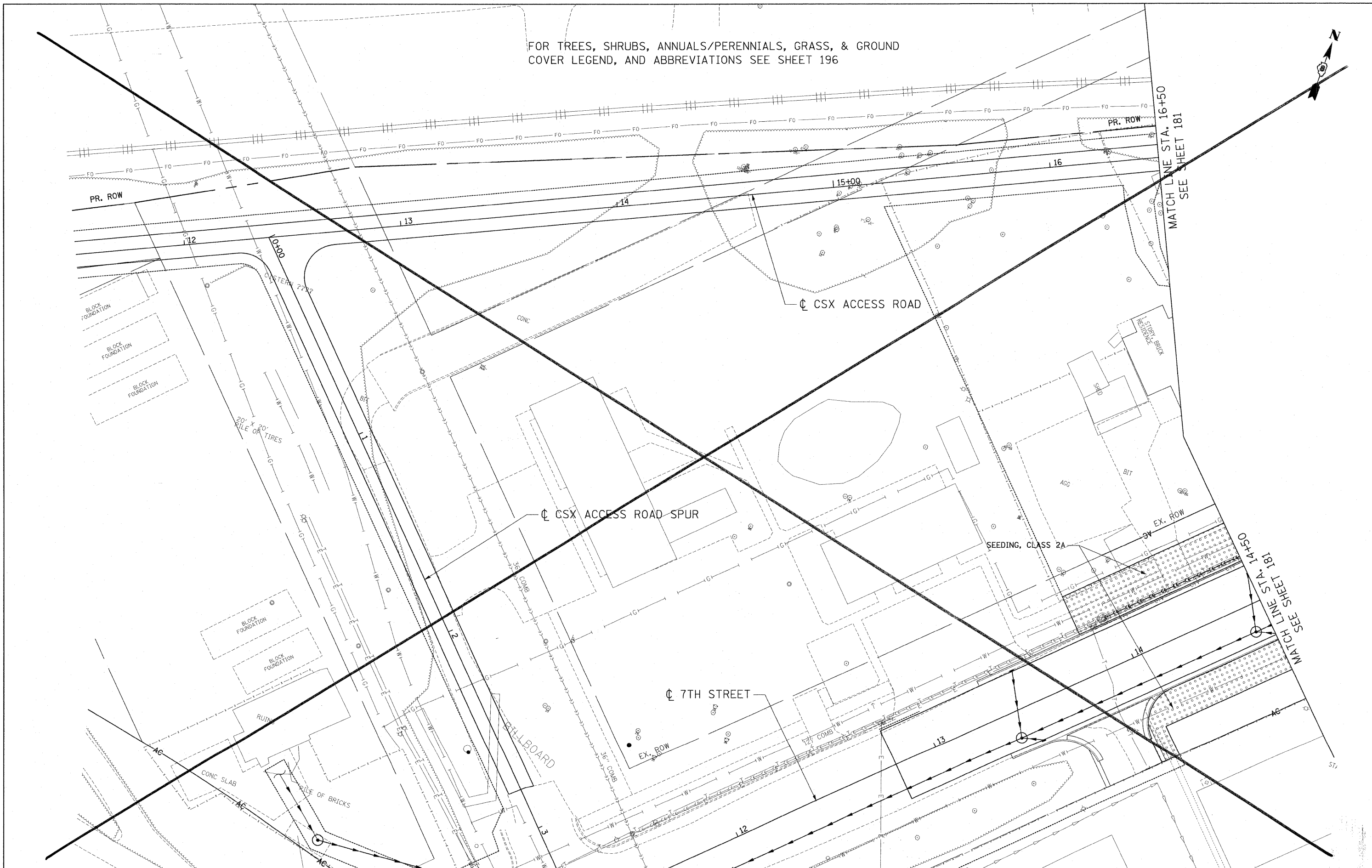
URBAN

CODE NO.	ITEM	UNIT	TOTAL QUANTITIES	100% STATE FUNDED CONSTRUCTION TYPE CODE				
				ROADWAY 0004	9TH ST BRIDGE 0011	ST. CLAIR BRIDGE 0014	LANDSCAPING 0031	TRAINEES 0042
Z0048665	RAILROAD PROTECTIVE LIABILITY INSURANCE	L SUM	1	1				
Z0048665	REMOVAL AND DISPOSAL OF NON-RESIDENTIAL BUILDING NO. 1	L SUM	1	1				
Z0062456	TEMPORARY PAVEMENT	SQ YD	36	36				
Z0076602	TRAINEES (SPECIAL)	HOUR	4,000				4,000	
Z0076604	TRAINEES TPG	HOUR	4,000				4,000	
X0327346	COMBINED SEWERS, CLASS A, TYPE 2, 8"	FOOT	37	37				
X0327347	COMBINED SEWER REMOVAL 6"	FOOT	189	189				
X0327348	COMBINED SEWER REMOVAL 10"	FOOT	384	384				
X0327349	COMBINED SEWER REMOVAL 18"	FOOT	280	280				
Z0001850	ARCHITECTURAL PRECAST CONCRETE PANEL	EACH	10	10				
Z0003005	SHRUB, LEX DECIDUA (POCOONIAW) CONTAINER GROWN, 5 GALLON	EACH	15				15	
Z0005385	TREE, METASEQUOIA GLYPTOSTROBILDES (DAWN REDWOOD) 2" CALIPER BALLED AND BURLAPPED	EACH	8				8	
Z0006845	TREE, QUERUS PHELLOS (WILLOW OAK) 2" CALIPER, BALLED AND BURLAPPED	EACH	2				2	
Z0007363	SHRUB, LINDERA BENZON (SPICEBUSH), CONTAINER GROWN, 3-GALLON	EACH	37				37	
X4200501	PORTLAND CEMENT CONCRETE PAVEMENT 10" (JOINTED) SPECIAL	SQ YD	807	807				
Z0001600	APPROACH SLAB REPAIR	SQ YD	73			73		
X6370700	CONCRETE BARRIER TRANSITION (SPECIAL)	FOOT	56	56				
X6065770	CONCRETE MEDIAN SURFACE, 10 INCH (SPECIAL)	SQ FT	1,218	1,218				
X5610700	WATER MAIN REMOVAL	FOOT	24	24				

* SPECIALTY ITEM

REVISOR 10/31/2011

FOR TREES, SHRUBS, ANNUALS/PERENNIALS, GRASS, & GROUND COVER LEGEND, AND ABBREVIATIONS SEE SHEET 196



FILE NAME = \S:\TRF\76C51-LAYOUT\LDN... \S:\TRF\76C51-LANDSCAP\1150.DGN
 USER NAME = #USER#
 DESIGNED - JM
 DRAWN - JB
 CHECKED - ACL
 DATE - 03/31/11
 PLOT SCALE = #SCALE#
 PLOT DATE = #DATE#
TENG & ASSOCIATES, INC.
 ENGINEERS/ARCHITECTS/PLANNERS
 CHICAGO, ILLINOIS

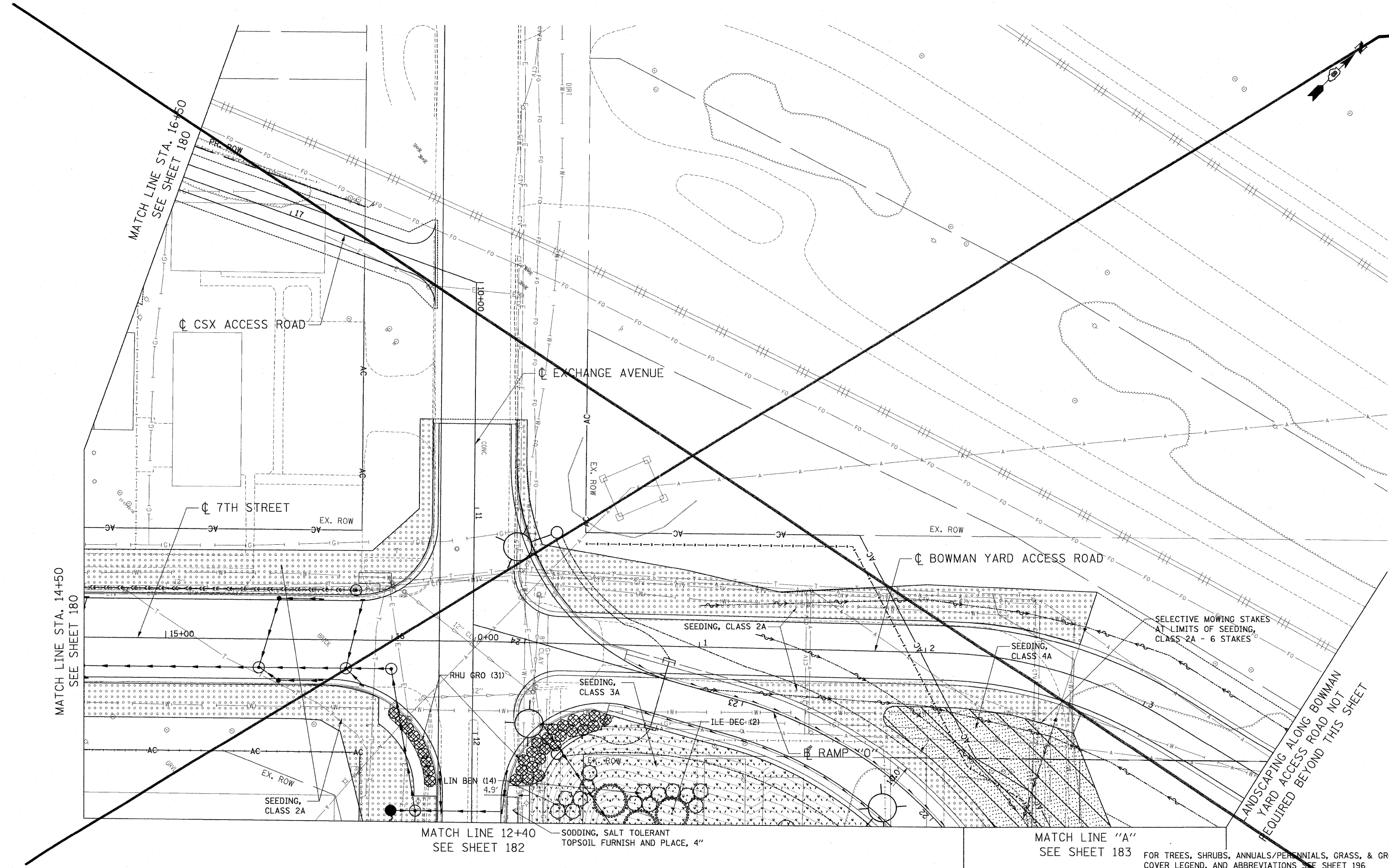
**STATE OF ILLINOIS
DEPARTMENT OF TRANSPORTATION**

SHEET DELETED
10/31/2011
PROPOSED LANDSCAPING PLANS

SCALE: 1"=20' SHEET NO. 2 OF 19 SHEETS STA. TO STA.

F.A.I. RTE.	SECTION	COUNTY	TOTAL SHEETS	SHEET NO.
82-1-3HB, 82-2N, 82-1-12RS		ST. CLAIR	352	180
64/FAU 9166/FAU 9180				CONTRACT NO. 76C51
FED. ROAD DIST. NO. ILLINOIS FED. AID PROJECT				

4-11-2011 14:21:26 \\NTS-024\4\WORK\PROJECTS\CONTRACT 76C51\DRY\11-SHT-LANDSCAP-1026.DGN
 4-11-2011 14:21:26 \\NTS-024\4\WORK\PROJECTS\CONTRACT 76C51\DRY\11-SHT-LANDSCAP-1026.DGN



FILE NAME = #FILEL#
 USER NAME = #USER#
 PLOT SCALE = #SCALE#
 PLOT DATE = #DATE#

DESIGNED - JM
 DRAWN - JB
 CHECKED - ACL
 DATE - 03/31/11

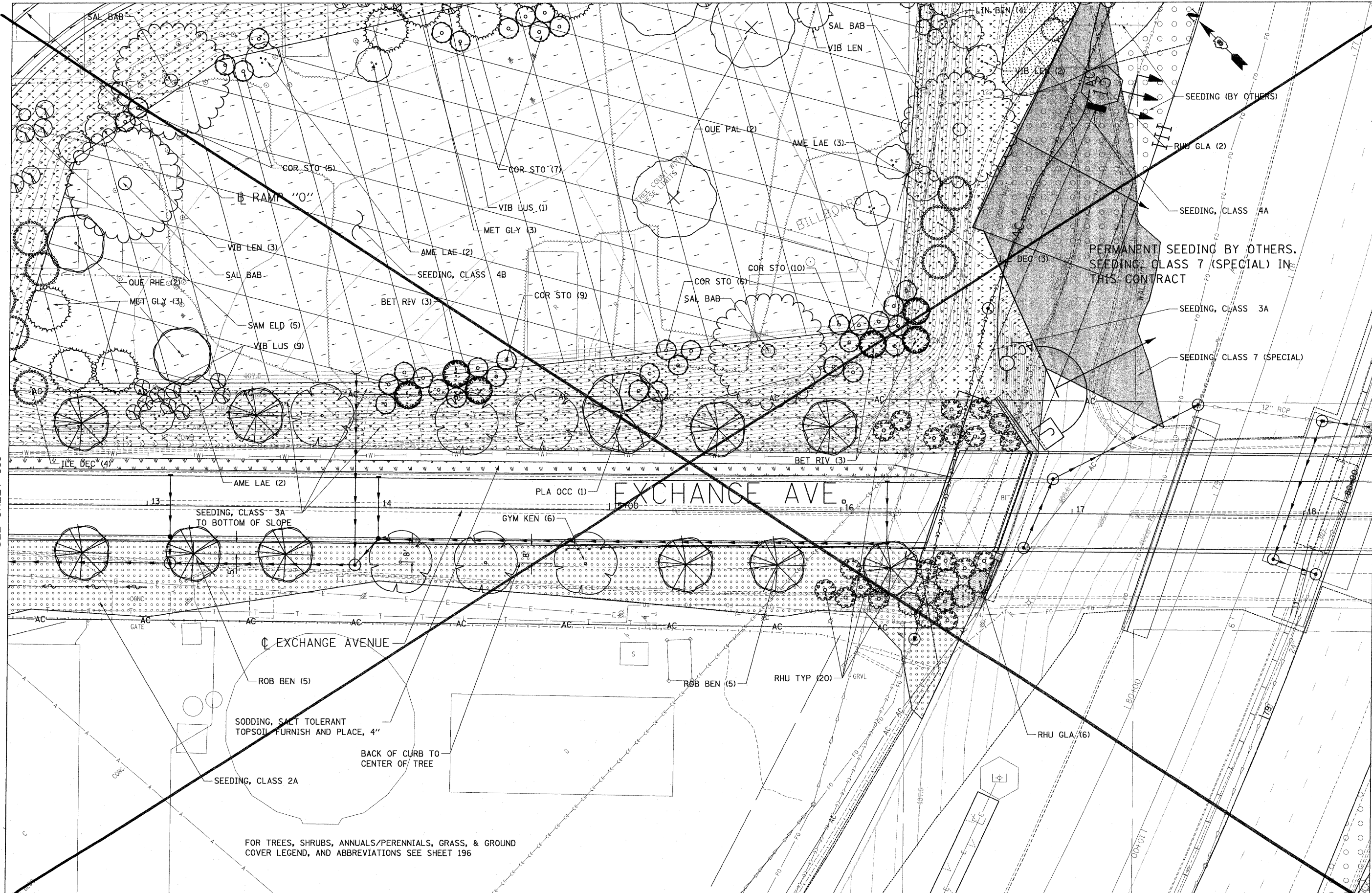
REVISED -
 REVISED -
 REVISED -
 REVISED -

STATE OF ILLINOIS
DEPARTMENT OF TRANSPORTATION

SHEET DELETED
 10/31/2011
PROPOSED LANDSCAPING PLANS
 SCALE: 1"=20' SHEET NO. 3 OF 19 SHEETS STA. TO STA.

FOR TREES, SHRUBS, ANNUALS/PERENNIALS, GRASS, & GROUND COVER LEGEND, AND ABBREVIATIONS SEE SHEET 196

F.A.I. RTE.	SECTION	COUNTY	TOTAL SHEETS	SHEET NO.
*	82-1-3HB, 82-2N, 82-1-12RS	ST. CLAIR	352	181
*	64/FAU 9166/FAU 9180	CONTRACT NO. 76C51		
FED. ROAD DIST. NO. ILLINOIS FED. AID PROJECT				



MATCH LINE 12+40
SEE SHEET 181

MATCH LINE 18+30
SEE SHEET 186

**STATE OF ILLINOIS
DEPARTMENT OF TRANSPORTATION**

▲ SHEET DELETED
10/31/2011
PROPOSED LANDSCAPING PLANS

FILE NAME #FILE#	USER NAME = #USER#	DESIGNED - JM	REVISED -
TENG & ASSOCIATES, INC. ENGINEERS/ARCHITECTS/PLANNERS CHICAGO, ILLINOIS	PLOT SCALE = #SCALE#	DRAWN - JB	REVISED -
	PLOT DATE = #DATE#	CHECKED - ACL	REVISED -
		DATE - 03/31/11	REVISED -

SCALE: 1"=20' SHEET NO. 4 OF 19 SHEETS STA. TO STA.

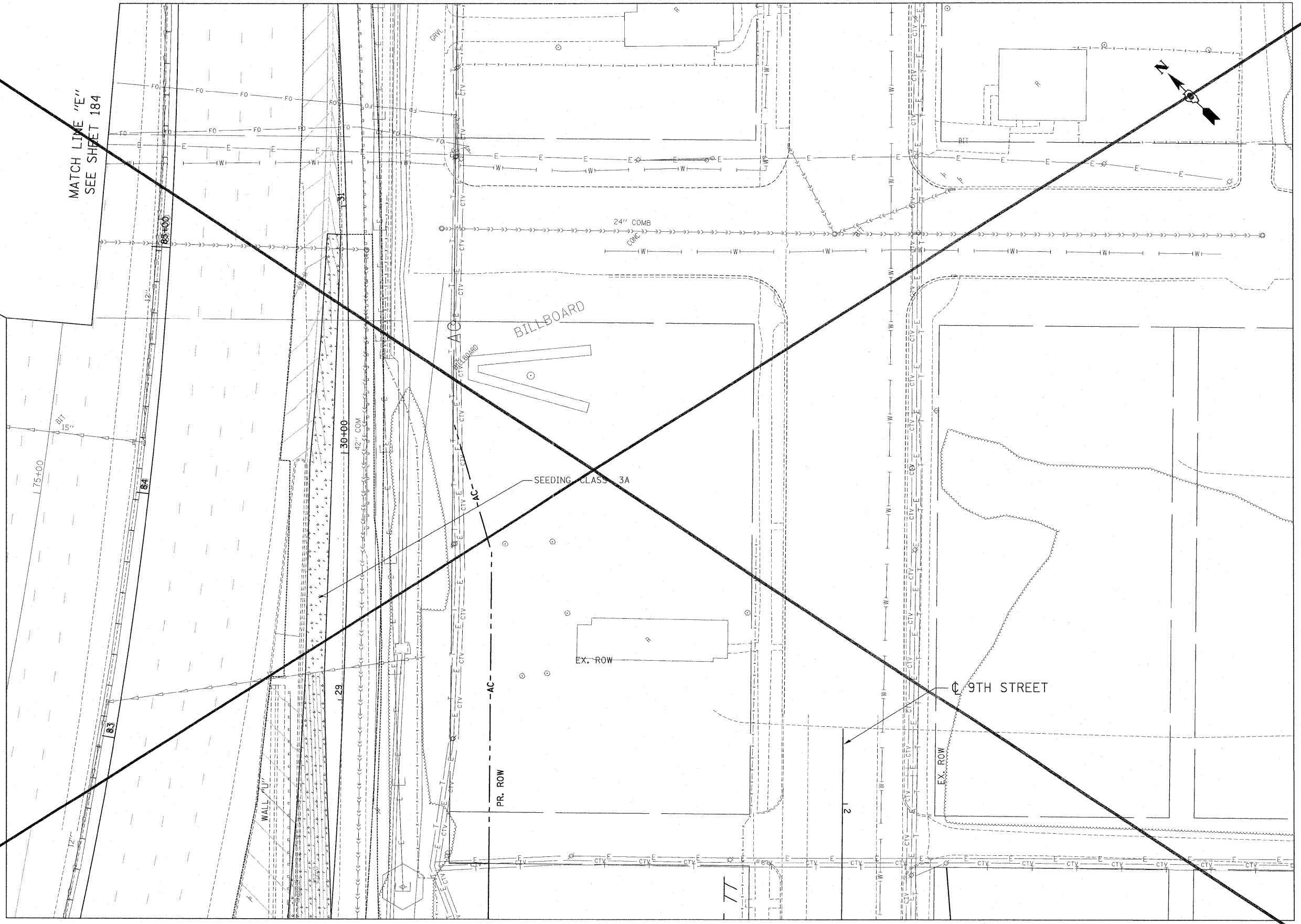
F.A.I. RTE.	SECTION	COUNTY	TOTAL SHEETS	SHEET NO.
82-1-3HB, 82-2N, 82-1-12RS		ST. CLAIR	352	182
64/FAU 9166/FAU 9180		CONTRACT NO. 76C51		
FED. ROAD DIST. NO. ILLINOIS FED. AID PROJECT				

4-11-2011, 14:23:37 BONDHOLD \\FS2004\AMVA\VAULT\T.D.\TRANS.07\2282\20868-801\CIVIL\04\19 ALL CONTRACTS\TRA\SHEETS CONTRACT 76C51\08TR1-51-SHT-L ANDSCAP-1240.DGN 4-11-2011, 14:23:37 BONDHOLD \\FS2004\AMVA\VAULT\T.D.\TRANS.07\2282\20868-801\CIVIL\04\19 ALL CONTRACTS\TRA\SHEETS CONTRACT 76C51\08TR1-51-SHT-L ANDSCAP-1240.DGN

\DBTR-7651-MOTIF.LDN, \DBTR-7651-LAYOUT.LDN, \DBTR-51-BORDER.LDN, \DBTR-51-PLAN.LANDSCAP-0250.DGN
 4-11-2011 14:33:37 BONDHOLD \X\9-0814\WV\WV\LD-TRANS.87\222\229868-80\1\CIVIL\CA0\99-4\CONTRACTS\TRN\SHEETS CONTRACT 76C51\DBTR-51-51-LANDSCAP-0250.DGN

MATCH LINE "D"
SEE SHEET 183

MATCH LINE "E"
SEE SHEET 184



MATCH LINE "C" SEE SHEET 186

TENG TENG & ASSOCIATES, INC.
 ENGINEERS/ARCHITECTS/PLANNERS
 CHICAGO, ILLINOIS

USER NAME = #USER#	DESIGNED - JM	REVISED -
FILE#	DRAWN - JB	REVISED -
PLOT SCALE = #SCALE#	CHECKED - ACL	REVISED -
PLOT DATE = #DATE#	DATE - 03/31/11	REVISED -

DESIGNED - JM	REVISED -
DRAWN - JB	REVISED -
CHECKED - ACL	REVISED -
DATE - 03/31/11	REVISED -

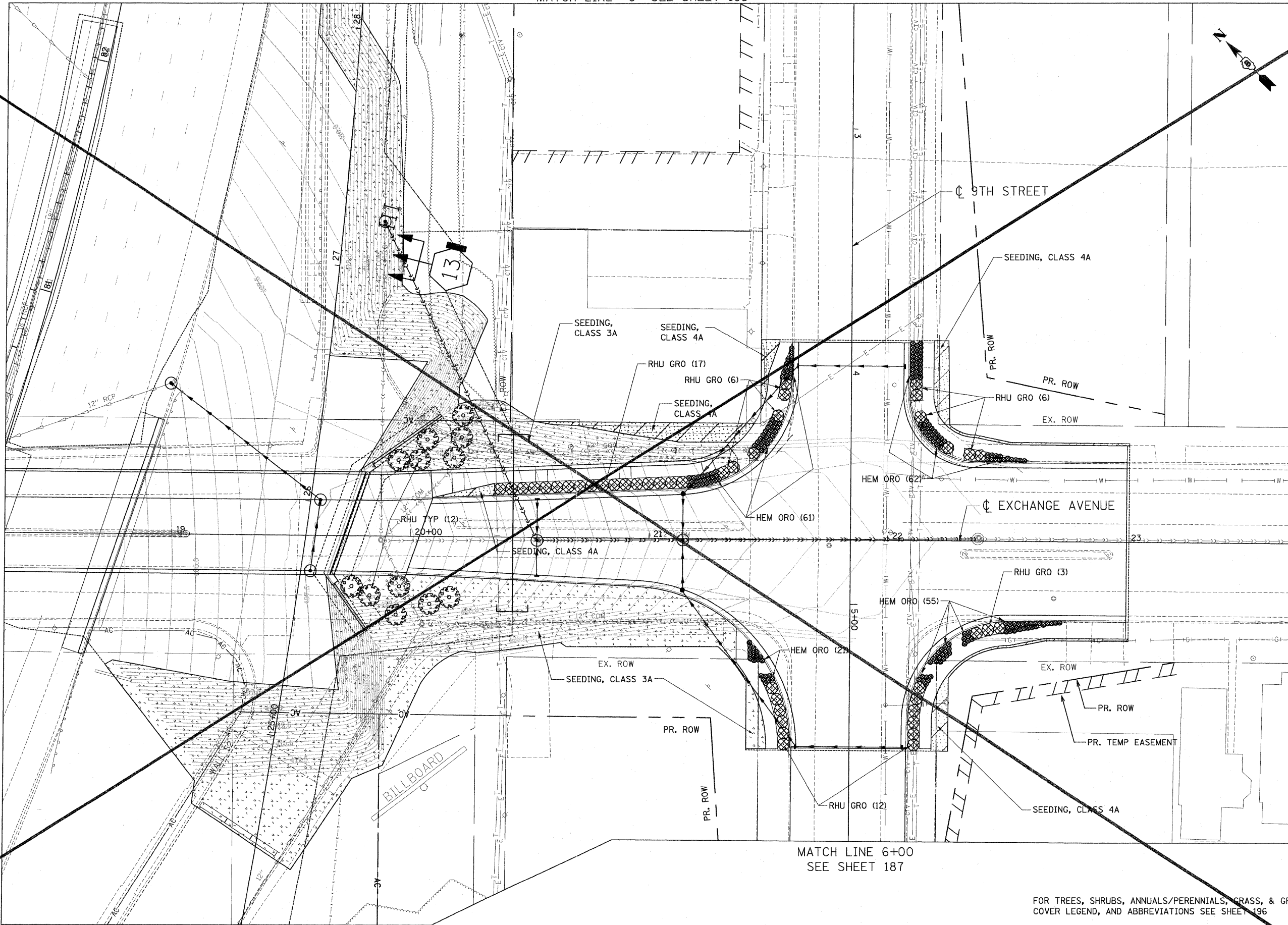
STATE OF ILLINOIS
DEPARTMENT OF TRANSPORTATION

SHEET DELETED
 10/31/2011
PROPOSED LANDSCAPING PLANS
 SCALE: 1"=20' SHEET NO. 7 OF 19 SHEETS STA. TO STA.

F.A.J. RTE.	SECTION	COUNTY	TOTAL SHEETS	SHEET NO.
• 82-1-3HB, 82-2N, 82-1-12RS	ST. CLAIR	352	185	
• 64/FAU 9166/FAU 9180	CONTRACT NO. 76C51			
FED. ROAD DIST. NO. [ILLINOIS] FED. AID PROJECT				

MATCH LINE "C" SEE SHEET 185

MATCH LINE 18+30
SEE SHEET 182



FOR TREES, SHRUBS, ANNUALS/PERENNIALS, GRASS, & GROUND COVER LEGEND, AND ABBREVIATIONS SEE SHEET 196

**STATE OF ILLINOIS
DEPARTMENT OF TRANSPORTATION**

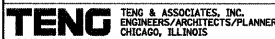
SHEET DELETED
10/31/2011
PROPOSED LANDSCAPING PLANS

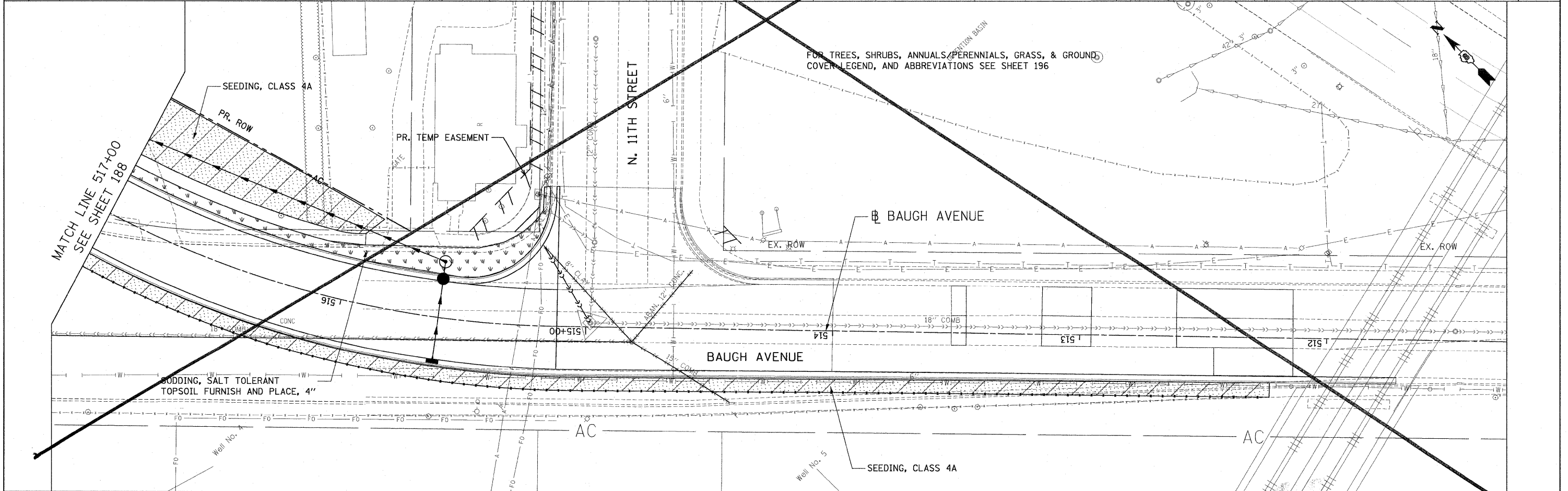
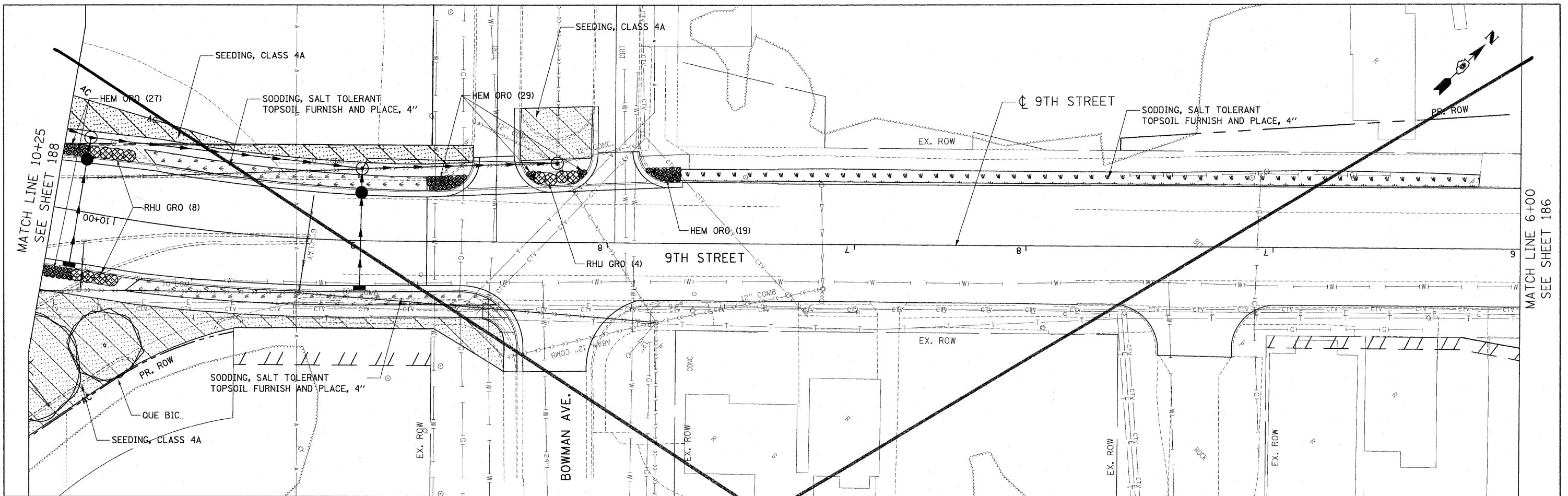
SCALE: 1"=20' SHEET NO. 8 OF 19 SHEETS STA. TO STA.

F.A.I. RTE.	SECTION	COUNTY	TOTAL SHEETS	SHEET NO.
• 82-1-3HB, 82-2N, 82-1-12RS	ST. CLAIR		52	186
• 64/FAU 9166/FAU 9180	CONTRACT NO. 76CS1			
FED. ROAD DIST. NO.	ILLINOIS FED. AID PROJECT			

FILE NAME =	USER NAME = #USER#	DESIGNED - JM	REVISED -
#FILE#		DRAWN - JB	REVISED -
	PLOT SCALE = #SCALE#	CHECKED - ACL	REVISED -
	PLOT DATE = #DATE#	DATE - 03/31/11	REVISED -

\\DBTR1-76CS1-LAYOUT\LDGN... \DBTR1-51-BORDER\LDGN... \DBTR1-51-BORDER\LDGN...
 4-11-2011 14:33:59





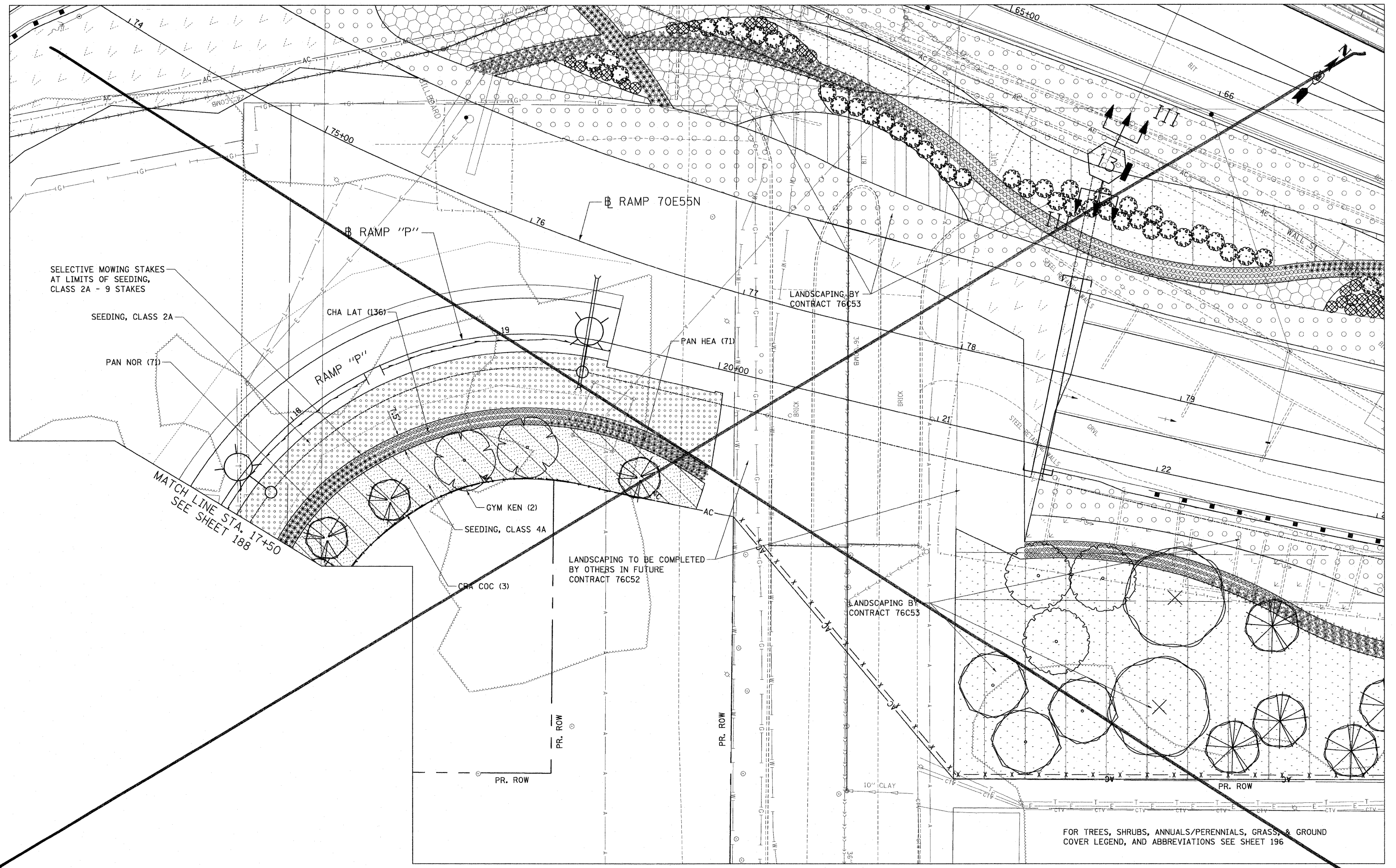
FILE NAME = #FILE#
 USER NAME = #USER#
 DESIGNED - JM
 DRAWN - JB
 CHECKED - ACL
 DATE - 03/31/11
 PLOT SCALE = #SCALE#
 PLOT DATE = #DATE#
 TENG & ASSOCIATES, INC.
 ENGINEERS/ARCHITECTS/PLANNERS
 CHICAGO, ILLINOIS

STATE OF ILLINOIS
DEPARTMENT OF TRANSPORTATION

SHEET DELETED
 10/31/2011
PROPOSED LANDSCAPING PLANS
 SCALE: 1"=20' SHEET NO. 9 OF 19 SHEETS STA. TO STA.

F.A.I. RTE.	SECTION	COUNTY	TOTAL SHEETS	SHEET NO.
82-1-3HB, 82-2N, 82-1-12RS	ST. CLAIR	35	187	
64/FAU 9166/FAU 9180				CONTRACT NO. 76C51
FED. ROAD DIST. NO. (ILLINOIS) FED. AID PROJECT				

4-11-2011, 14:55:15
 \\P5-004\AR\VAUL\1-D-THINS\07\2282\20868-00\AC\CVL\CAD\199 HILL CONTRACTS\SYSTEM SHEETS CONTRACT 76C51\BTRF-51-SHT-LANDSCAP-2086.DGN
 4-11-2011, 14:55:15
 \\P5-004\AR\VAUL\1-D-THINS\07\2282\20868-00\AC\CVL\CAD\199 HILL CONTRACTS\SYSTEM SHEETS CONTRACT 76C51\BTRF-51-SHT-LANDSCAP-2086.DGN



FILE NAME =
 \$FILEL\$
TENG & ASSOCIATES, INC.
 ENGINEERS/ARCHITECTS/PLANNERS
 CHICAGO, ILLINOIS

USER NAME = \$USER\$
 PLOT SCALE = \$SCALE\$
 PLOT DATE = \$DATE\$

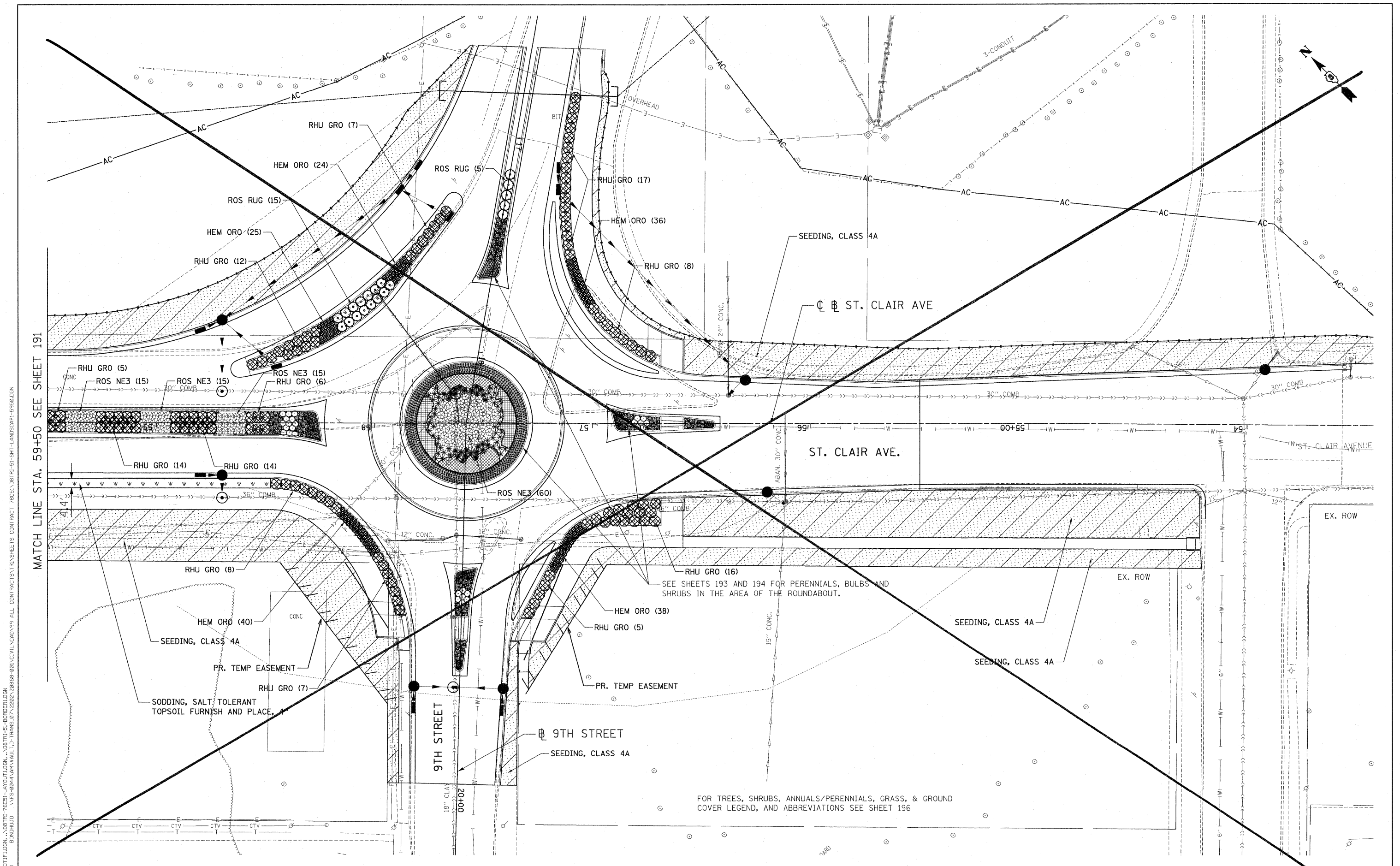
DESIGNED - JM
 DRAWN - JB
 CHECKED - ACL
 DATE - 03/31/11

REVISED -
 REVISED -
 REVISED -
 REVISED -

STATE OF ILLINOIS
DEPARTMENT OF TRANSPORTATION

SHEET DELETED
 10/31/2011
PROPOSED LANDSCAPING PLANS
 SCALE: 1"=20' SHEET NO. 11 OF 19 SHEETS STA. TO STA.

F.A.I. RTE.	SECTION	COUNTY	SHEET NO.	TOTAL SHEET NO.
82-1-3HB, 82-2N, 82-1-12RS	ST. CLAIR	352	89	
64/FAU 9166/FAU 9180		CONTRACT NO. 76C51		
FED. ROAD DIST. NO. ILLINOIS FED. AID PROJECT				



MATCH LINE STA. 59+50 SEE SHEET 191

FILE NAME = #FILE#
 USER NAME = #USER#
 DESIGNED - JM
 DRAWN - JB
 CHECKED - ACL
 DATE - 03/31/11
 PLOT SCALE = #SCALE#
 PLOT DATE = #DATE#
 TENG & ASSOCIATES, INC.
 ENGINEERS/ARCHITECTS/PLANNERS
 CHICAGO, ILLINOIS

**STATE OF ILLINOIS
DEPARTMENT OF TRANSPORTATION**

SHEET DELETED
 10/31/2011
PROPOSED LANDSCAPING PLANS
 SCALE: 1"=20' SHEET NO. 12 OF 19 SHEETS STA. TO STA.

F.A.I. RTE.	SECTION	COUNTY	TOTAL SHEETS	SHEET NO.
82-1-3HB, 82-2N, 82-1-12RS	ST. CLAIR	352	190	
64/FAU 9166/FAU 9180	CONTRACT NO. 76C51			
FED. ROAD DIST. NO.	ILLINOIS FED. AID PROJECT			

FOR TREES, SHRUBS, ANNUALS/PERENNIALS, GRASS, & GROUND COVER LEGEND, AND ABBREVIATIONS SEE SHEET 196

SEE SHEETS 193 AND 194 FOR PERENNIALS, BULBS AND SHRUBS IN THE AREA OF THE ROUNDABOUT.

SODDING, SALT TOLERANT TOPSOIL FURNISH AND PLACE.

SEEDING, CLASS 4A

PR. TEMP EASEMENT

RHU GRO (8)

HEM ORO (40)

RHU GRO (5)

ROS NE3 (15)

ROS NE3 (15)

RHU GRO (6)

RHU GRO (14)

RHU GRO (14)

RHU GRO (8)

RHU GRO (7)

9TH STREET

9TH STREET

SEEDING, CLASS 4A

HEM ORO (38)

RHU GRO (5)

PR. TEMP EASEMENT

RHU GRO (16)

SEE SHEETS 193 AND 194 FOR PERENNIALS, BULBS AND SHRUBS IN THE AREA OF THE ROUNDABOUT.

ROS NE3 (60)

ST. CLAIR AVE.

ST. CLAIR AVE

SEEDING, CLASS 4A

RHU GRO (8)

HEM ORO (36)

RHU GRO (17)

ROS RUG (5)

HEM ORO (24)

RHU GRO (7)

ROS RUG (15)

HEM ORO (25)

RHU GRO (12)

AC

AC

AC

AC

AC

AC

AC

AC

AC

AC

AC

AC

AC

AC

AC

AC

AC

AC

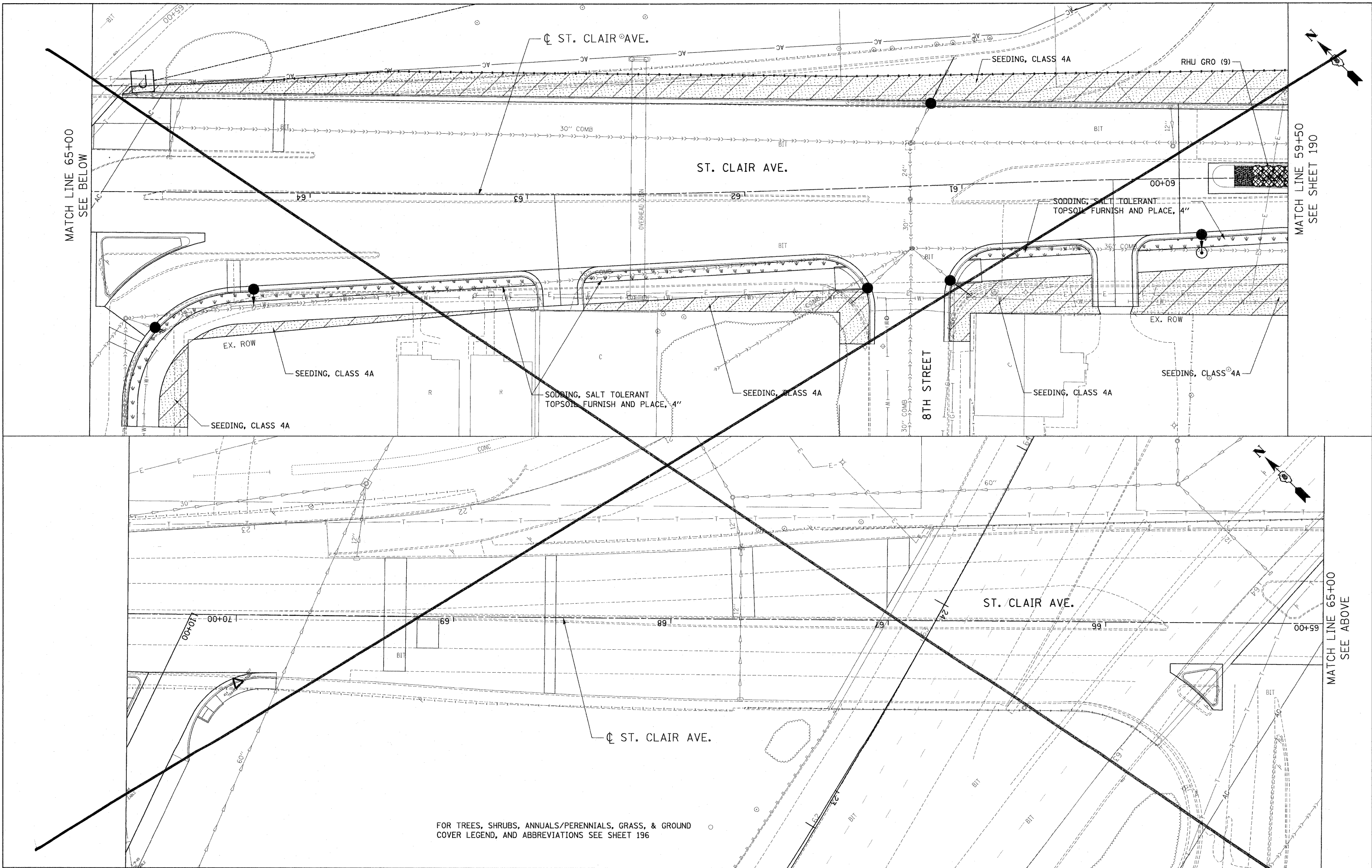
AC

AC

AC

AC

..\DBTRF-76C51-MOTIF.LOBN, ..\DBTRF-76C51-LAYOUT.LOBN, ..\DBTRF-55-BORDER.LOBN, ..\DBTRF-76C51-MOTIF.DGN
 4-11-2011, 14:56:16
 ..\DBTRF-76C51-MOTIF.LOBN, ..\DBTRF-76C51-LAYOUT.LOBN, ..\DBTRF-55-BORDER.LOBN, ..\DBTRF-76C51-MOTIF.DGN
 4-11-2011, 14:56:16



FOR TREES, SHRUBS, ANNUALS/PERENNIALS, GRASS, & GROUND COVER LEGEND, AND ABBREVIATIONS SEE SHEET 196

FILE NAME =
 #FILE#
TENG TENG & ASSOCIATES, INC.
 ENGINEERS/ARCHITECTS/PLANNERS
 CHICAGO, ILLINOIS

USER NAME = #USER#
 PLOT SCALE = #SCALE#
 PLOT DATE = #DATE#

DESIGNED - JM
 DRAWN - JB
 CHECKED - ACL
 DATE - 03/31/11

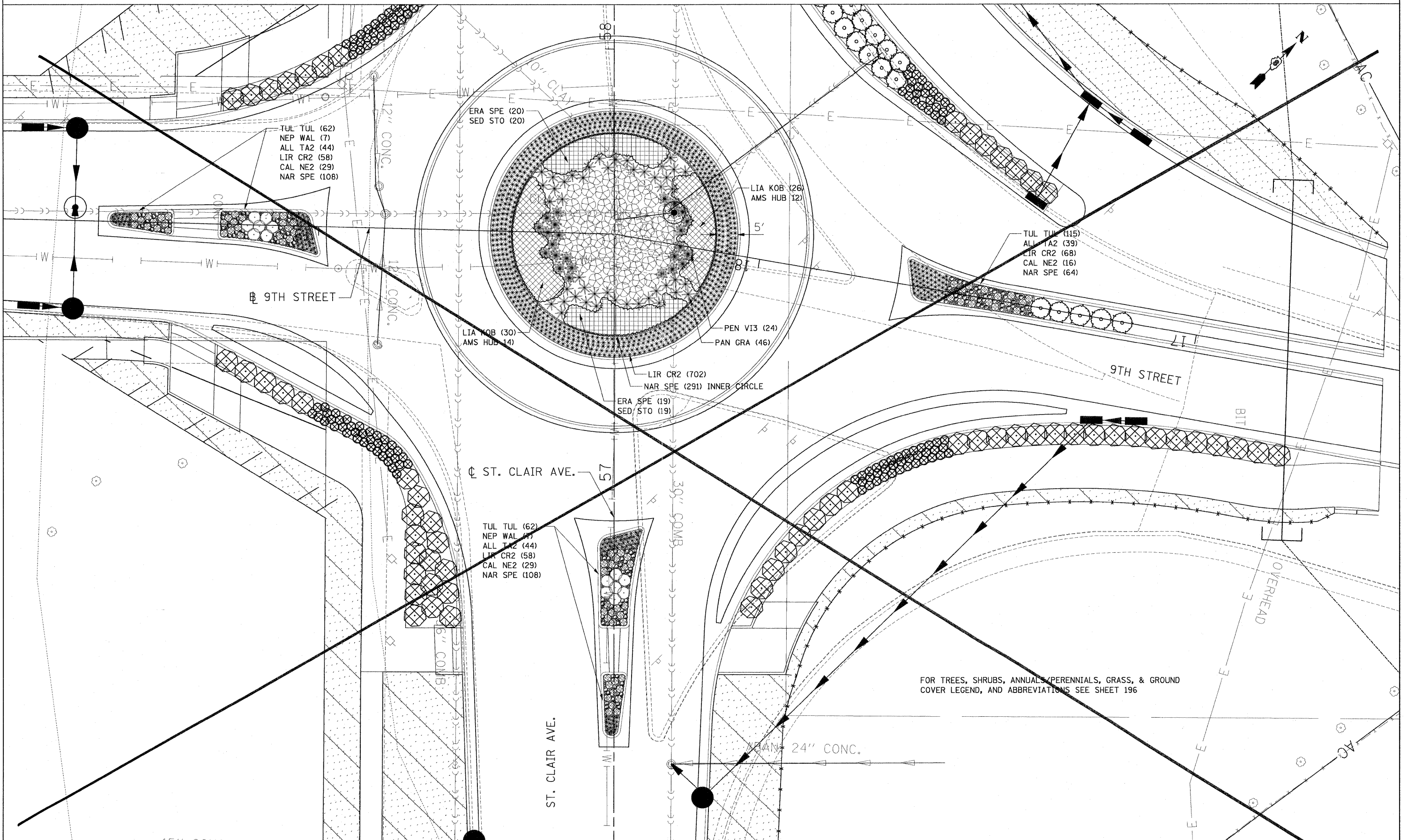
REVISED -
 REVISED -
 REVISED -
 REVISED -

STATE OF ILLINOIS
DEPARTMENT OF TRANSPORTATION

SHEET DELETED
 10/31/2011
PROPOSED LANDSCAPING PLANS
 SCALE: 1"=20' SHEET NO. 13 OF 19 SHEETS STA. TO STA.

F.A.I. RTE.	SECTION	COUNTY	TOTAL SHEETS	SHEET NO.
82-1-3HB, 82-2N, 82-1-12RS	ST. CLAIR	ST. CLAIR	352	191
64/FAU 9166/FAU 9180		CONTRACT NO. 76C51		
FED. ROAD DIST. NO.		ILLINOIS FED. AID PROJECT		

MATCH LINE 58+10 SEE SHEET 194



\D:\BTR\76C51\401\IF\LDON..._UBTR\76C51-LAYOUT.LDN..._UBTR\41-BORDER.LDN
 \S:\88\KURVALL\0-TRANS\07-2282\22868-881\CIVIL\04\09 ALL CONTRACTS\TRANSHEETS CONTRACT 76C51\UBTR\51-SHT-LANDSCAP-5690.DGN
 4-11-2011 14:17:17

FILE NAME = #FILE#	USER NAME = #USER#	DESIGNED - JM	REVISED -
		DRAWN - JB	REVISED -
		CHECKED - ACL	REVISED -
		DATE - 03/31/11	REVISED -
PLOT SCALE = #SCALE#			
PLOT DATE = #DATE#			

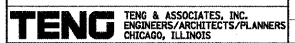
**STATE OF ILLINOIS
DEPARTMENT OF TRANSPORTATION**

△ SHEET DELETED
10/31/2011

PROPOSED LANDSCAPING PLANS

SCALE: 1"=10' SHEET NO. 15 OF 19 SHEETS STA. TO STA.

F.A.I. RTE.	SECTION	COUNTY	TOTAL SHEETS	SHEET NO.
82-1-3HB, 82-2N, 82-1-12RS	ST. CLAIR		352	193
64/FAU 9166/FAU 9180				
CONTRACT NO. 76C51				
FED. ROAD DIST. NO. ILLINOIS FED. AID PROJECT				



TREE SCHEDULES

	TYPE	STATION	OFFSET	
RAMP P	CRA V12	15+50	99.1	LT
	CRA V12	15+54	85.0	LT
	CRA V12	15+64	62.8	RT
	CRA V12	15+74	50.7	RT
	CRA V12	15+77	85.7	LT
	CRA V12	15+77	64.5	LT
	CRA V12	15+86	36.8	RT
	CRA V12	16+00	46.3	RT
	CRA COC	16+85	52.8	RT
	CRA V12	16+93	55.6	LT
	CRA COC	17+41	53.6	RT
	CRA COC	17+67	47.3	RT
	CRA COC	18+14	54.4	RT
	GYM KEN	18+71	52.6	RT
	GYM KEN	19+13	50.5	RT
	CRA COC	19+77	55.4	RT

	TYPE	STATION	OFFSET	
BAUGH	ACE AR2	517+32	40.6	RT
	ACE AR2	517+66	39.6	RT
	ACE AR2	517+94	37.2	RT
	ACE AR2	518+25	34.5	RT
	CRA V12	518+73	36.0	RT
	QUE ALB	518+96	44.3	RT
	QUE ALB	519+17	59.7	RT
	CRA V12	519+39	63.1	RT
	QUE MAC	519+49	103.5	RT
	CRA V12	519+58	54.3	LT
	CRA V12	519+67	83.2	RT
	QUE MAC	519+78	127.8	RT
	CRA V12	519+79	90.4	RT
	CRA V12	519+85	102.1	RT
	QUE BIC	519+93	157.9	RT
	CRA V12	519+93	95.0	LT
	CRA V12	519+99	109.4	LT

	TYPE	STATION	OFFSET	
RAMP O	QUE MAC	16+87	55.4	RT
	CRA COC	17+47	81.7	RT
	QUE MAC	17+63	111.9	LT
	CRA COC	17+66	72.4	RT
	SAL BAB	17+91	70.0	LT
	CRA COC	18+00	65.5	RT
	SAL BAB	18+19	161.7	LT
	QUE BIC	18+23	54.6	LT
	QUE MAC	18+27	87.8	RT
	PLA OCC	18+27	75.9	LT
	QUE PAL	18+79	95.6	LT
	QUE PAL	19+15	73.1	LT
	QUE BIC	19+21	74.6	RT
	PLA OCC	19+50	61.5	RT
	MET GLY	19+52	65.1	LT
	MET GLY	19+69	56.8	LT
	QUE ALB	19+84	45.0	RT
	MET GLY	19+92	64.6	LT
	MET GLY	20+16	54.1	LT
	MET GLY	20+33	61.2	LT
	QUE ALB	20+37	48.2	RT
	AME LAE	20+42	74.7	LT
	AME LAE	20+87	62.3	LT
	SAL BAB	21+42	58.6	LT
	SAL BAB	22+11	83.5	LT
	QUE ALB	16+91	44.1	RT

	TYPE	STATION	OFFSET	
EXCHANGE	MET GLY	12+57	85.2	LT
	MET GLY	12+67	58.5	LT
	QUE PHE	12+68	113.5	LT
	ROB BEN	12+71	35.4	LT
	ROB BEN	12+72	20.8	RT
	MET GLY	12+86	58.4	LT
	AME LAE	13+04	38.6	LT
	QUE PHE	13+15	65.1	LT
	ROB BEN	13+20	20.6	RT
	AME LAE	13+21	49.3	LT
	ROB BEN	13+47	39.5	LT
	ROB BEN	13+60	20.6	RT
	GYM KEN	13+75	39.7	LT
	GYM KEN	14+10	23.6	RT
	BET RIV	14+13	49.1	LT
	BET RIV	14+34	58.5	LT
	GYM KEN	14+38	36.7	LT
	BET RIV	14+43	51.3	LT
	GYM KEN	14+47	23.4	RT
	GYM KEN	14+72	38.8	LT
	GYM KEN	14+90	23.4	RT
	PLA OCC	15+06	42.4	LT
	QUE PAL	15+26	135.6	LT
	ROB BEN	15+33	23.2	RT
	ROB BEN	15+47	35.5	LT
	SAL BAB	15+68	69.6	LT
	ROB BEN	15+73	23.4	RT
	ROB BEN	15+95	36.9	LT
	AME LAE	16+12	131.4	LT
	BET RIV	16+13	72.6	LT
ROB BEN	16+21	24.4	RT	
AME LAE	16+22	152.0	LT	
BET RIV	16+32	75.0	LT	
BET RIV	16+32	87.2	LT	
AME LAE	16+34	142.6	LT	

D:\P101-01-0000001.DGN 4-11-2011 14:08:22 BONDHJUD \NFS-0044\HW\VALU\T.C-TRANS 07\2202\20668-20\N\CIVIL\CAD\99-HLL CONTRACTS\TRA\SHEETS CONTRACT 76C51\DRTR-01-SHT-L-LANDSCAPING-1.DGN

FILE NAME =	USER NAME = #USER#	DESIGNED - JM	REVISED -	STATE OF ILLINOIS DEPARTMENT OF TRANSPORTATION	SHEET DELETED 10/31/2011 PROPOSED LANDSCAPING PLANS - TREE SCHEDULE	F.A.I. RTE.	SECTION	COUNTY	TOTAL SHEETS	SHEET NO.
#FILEL#		DRAWN - JB	REVISED -			* 82-1-3HB, 82-2N, 82-1-12RS	ST. CLAS	352	195	
PLOT SCALE = #SCALE#		CHECKED - ACL	REVISED -			* 64/FAU 9166/FAU 9180	CONTRACT NO. 76C51			
PLOT DATE = #DATE#		DATE - 03/31/11	REVISED -			FED. ROAD DIST. NO.	ILLINOIS FED. AID PROJECT			
TENGL & ASSOCIATES, INC. ENGINEERS/ARCHITECTS/PLANNERS CHICAGO, ILLINOIS					SCALE: N/A	SHEET NO. 17 OF 19 SHEETS	STA.	TO STA.		

LEGEND

CODE TYPICALLY EQUALS FIRST THREE LETTERS OF THE BOTANICAL AND/OR THE COMMON NAME.

TREES

CODE	ITEM	QTY
ACE AR2	TREE, ACER X FREEMANII AUTUMN BLAZE (AUTUMN BLAZE FREEMAN MAPLE), 3" CALIPER, BALLED AND BURLAPPED	4
BET RIV	TREE, BETULA NIGRA (RIVER BIRCH) 6' HEIGHT, CLUMP FORM, BALLED AND BURLAPPED	6
SAL BAB	TREE, SALIX BABYLONICA (BABYLON WEEPING WILLOW), 2" CALIPER, BALLED AND BURLAPPED	5
GYM KEN	TREE, GYMNOCLADUS DIOICUS (KENTUCKY COFFEETREE), 3" CALIPER, BALLED AND BURLAPPED	8
MET GLY	TREE, METASEQUOIA GLYPTOSTROBOIDES (DAWN REDWOOD) 2" CALIPER, BALLED AND BURLAPPED	8
PLA OCC	TREE, PLATANUS OCCIDENTALIS (SYCAMORE), 3" CALIPER, BALLED AND BURLAPPED	3
QUE ALB	TREE, QUERCUS ALBA (WHITE OAK), 2" CALIPER, BALLED AND BURLAPPED	5
QUE BIC	TREE, QUERCUS BICOLOR (SWAMP WHITE OAK) 3" CALIPER, BALLED AND BURLAPPED	3
QUE MAC	TREE, QUERCUS MACROCARPA (BURR OAK) 3" CALIPER, BALLED AND BURLAPPED	5
QUE PAL	TREE, QUERCUS PALUSTRIS (PIN OAK) 3" CALIPER, BALLED AND BURLAPPED	3
QUE PHE	TREE, QUERCUS PHELLOS (WILLOW OAK) 2" CALIPER, BALLED AND BURLAPPED	2
ROB BEN	TREE, ROBINIA PSEUDOACACIA BENJAMIN (BENJAMIN BLACK LOCUST), 2-1/2" CALIPER, BALLED AND BURLAPPED	10

FLOWERING TREES

CODE	ITEM	QTY
AME LAE	TREE, AMELANCHIER LAEVIS (ALLEGHENY SERVICEBERRY), 5' HEIGHT, CLUMP FORM, BALLED AND BURLAPPED	7
CRA COC	TREE, CRATAEGUS CRUSGALLI (COCKSPUR HAWTHORN), 6' HEIGHT, SHRUB FORM, BALLED AND BURLAPPED	8
CRA VI2	TREE, CRATAEGUS VIRDIS WINTER KING (WINTER KING GREEN HAWTHORN), 6' HEIGHT CLUMP FORM, BALLED AND BURLAPPED	17

SHRUBS

CODE	ITEM	QTY
ILE DEC	SHRUB, ILEX DECIDUA (POSSUMHAW) CONTAINER GROWN, 5-GALLON	15
COR STO	SHRUB, CORNUS STOLONIFERA (RED OSIER DOGWOOD), CONTAINER GROWN, 3-GALLON	44
LIN BEN	SHRUB, LINDERA BENZOIN (SPICEBUSH) CONTAINER GROWN, 3-GALLON	37
RHU GRO	SHRUB, RHUS AROMATICA GRO-LOW (GRO-LOW FRAGRANT SUMAC), CONTAINER GROWN, 3-GALLON	251
RHU GLA	SHRUB, RHUS GLABRA (SMOOTH SUMAC), 3' HEIGHT, CONTAINER	19
RHU TYP	SHRUB, RHUS TYPHINA (STAGHORN SUMAC), 3' HEIGHT, CONTAINER	45
ROS NE3	SHRUB, ROSA NEARLY WILD (NEARLY WILD SHRUB ROSE), CONTAINER GROWN, 3-GALLON	165
ROS RUG	SHRUB, ROSA RUGOSA (RUGOSA ROSE), 24" HEIGHT, CONTAINER	25
SAM ELD	SHRUB, SAMBUCUS CANADENSIS (AMERICAN ELDER), 3' HEIGHT, BALLED AND BURLAPPED	19
VIB LUS	SHRUB, VIBURNUM DENTATUM (ARROWWOOD VIBURNUM), 3' HEIGHT, BALLED AND BURLAPPED	33
VIB LEN	SHRUB, VIBURNUM LENTAGO (NANNYBERRY VIBURNUM), 3' HEIGHT, BALLED AND BURLAPPED	10

PAID FOR AS EITHER:
PERENNIAL PLANTS, BULB TYPE OR
PERENNIAL PLANTS, ORNAMENTAL TYPE, GALLON POT

PERENNIALS

CODE	BOTANICAL NAME / COMMON NAME	CONT	QTY
ALL TA2	Allium tanguticum 'Summer Beauty' / Summer Beauty Globe Lily	1 GALLON	301
CAL NE2	Calamintha nepeta 'Montrose White' / White Catmint	1 GALLON	172
HEM ORO	Hemerocallis hybrid 'Stella de Oro' / Stella de Oro Daylily	1 GALLON	501
NAR SPE	Narcissus x 'Ice Follies' / Ice Follies Daffodil	BULB	1,548
NEP WAL	Nepeta x faassenii 'Walkers Low' / Walkers Low Catmint	1 GALLON	41
TUL TUL	Tulipa x 'Spring Grove' / Spring Grove Tulp	BULB	566

GRASSES

CODE	BOTANICAL NAME / COMMON NAME	CONT	QTY
LIR CR2	Liriope spicata / Creeping Lily Turf	1 GALLON	1,931
PAN GRA	Panicum virgatum 'Squaw' / Squaw Switch Grass	1 GALLON	92
PEN VI3	Pennisetum alopecuroides 'Viridescens' / Black Flowered Fountain Grass	1 GALLON	48
CHA LAT	Chasmanthium latifolium / Northern Sea Oats	1 GALLON	136
PAN CLO	Panicum virgatum 'Cloud Nine' / Tall Switch Grass	1 GALLON	80
PAN HEA	Panicum virgatum 'Heavy Metal' / Heavy Metal Switch Grass	1 GALLON	71
PAN NOR	Panicum virgatum 'North Wind' / Northwind Switch Grass	1 GALLON	139

GROUND COVERS

CODE	BOTANICAL NAME / COMMON NAME	CONT	QTY
AMS HUB	Amsonia hubrichtii / Arkansas Blue-star	1 GALLON @ 48" oc	52
ERA SPE	Eragrostis spectabilis / Purple Love Grass	1 GALLON @ 36" oc	78
LIA KOB	Liatris spicata 'Kobold' / Spike Gayfeather	1 GALLON @ 32" oc	112
SED STO	Sedum spectabile 'Neon' / Stonecrop	1 GALLON @ 36" oc	78

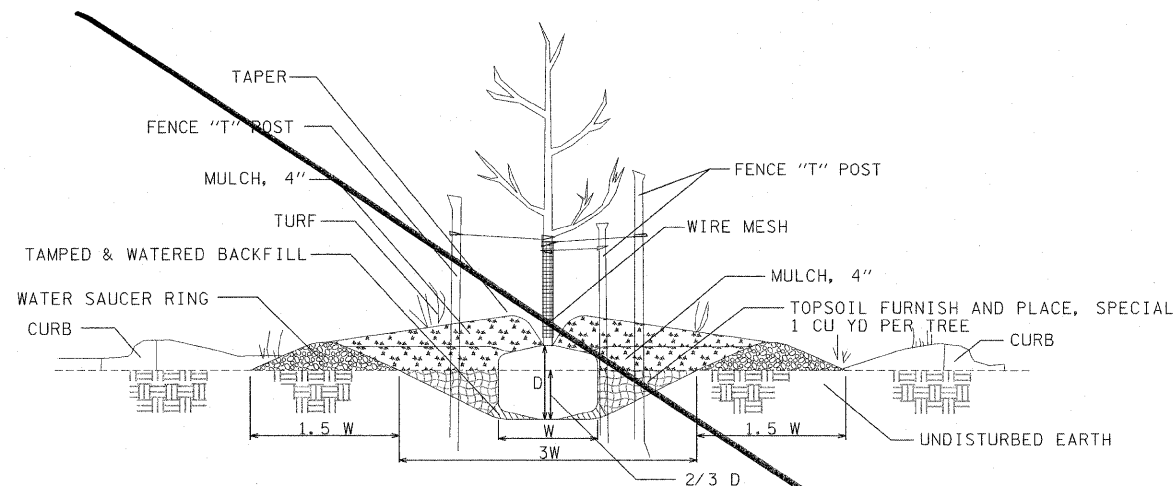
SEEDING & SODDING

ITEM	QTY
SEEDING, CLASS 2A EROSION CONTROL BLANKET NITROGEN, PHOSPHORUS & POTASSIUM FERTILIZER NUTRIENTS - 90 LBS/ACRE EACH	1.00 ACRE 4,840 SQ YD 90 LBS EACH
SEEDING, CLASS 3A EROSION CONTROL BLANKET	1.75 ACRE 8,470 SQ YD
SEEDING, CLASS 4A EROSION CONTROL BLANKET	2.75 ACRE 13,310 SQ YD
SEEDING, CLASS 4B EROSION CONTROL BLANKET	1.50 ACRE 7,260 SQ YD
SODDING, SALT TOLERANT TOPSOIL FURNISH AND PLACE, 4" NITROGEN, PHOSPHORUS & POTASSIUM FERTILIZER NUTRIENTS - 60 LBS/ACRE EACH	1,101 SQ YD 1,101 SQ YD 14 LBS EACH
SEEDING, CLASS 7 (SPECIAL) THE MIX SHALL CONSIST OF 48 LBS PER ACRE OF SPRING OATS FROM MARCH 1 TO JULY 31 AND 56 LBS PER ACRE OF BALBOA FARM RYE OR 60 LBS PER ACRE OF WINTER WHEAT FROM AUG. 1 TO NOV. 15. WITH EROSION CONTROL BLANKET	1.00 AC 4,840 SQ YD

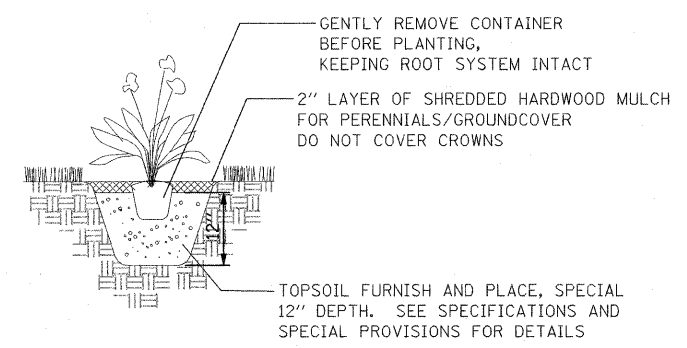
*D:\BTR-76C51-UNSCOPED\...D:\BTR-76C51-UNSCOPED\...D:\BTR-76C51-UNSCOPED\...
 4-11-2011 14:02:22



\D:\TR-5-BORDERL\CONTRACT 76C51\08191-51-SHT-LANDSCAP-2.DGN
 \F5-0241\AMVAULT\TRANS.07\2282\20868-02\A\CIVIL\CAO\99 ALL CONTRACTS\TR\SHETS CONTRACT 76C51\08191-51-SHT-LANDSCAP-2.DGN
 BNDHJJD

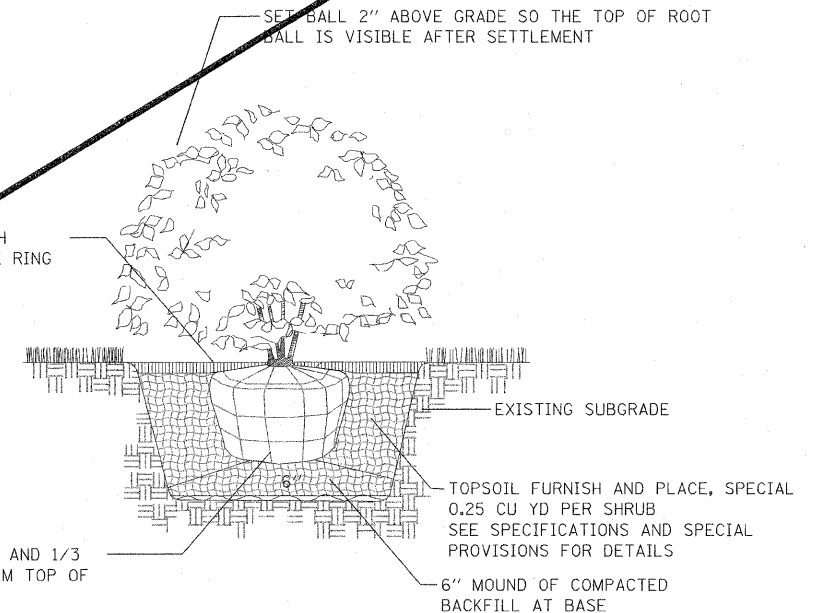


1 PARKWAY PLANTING DETAIL
NOT TO SCALE



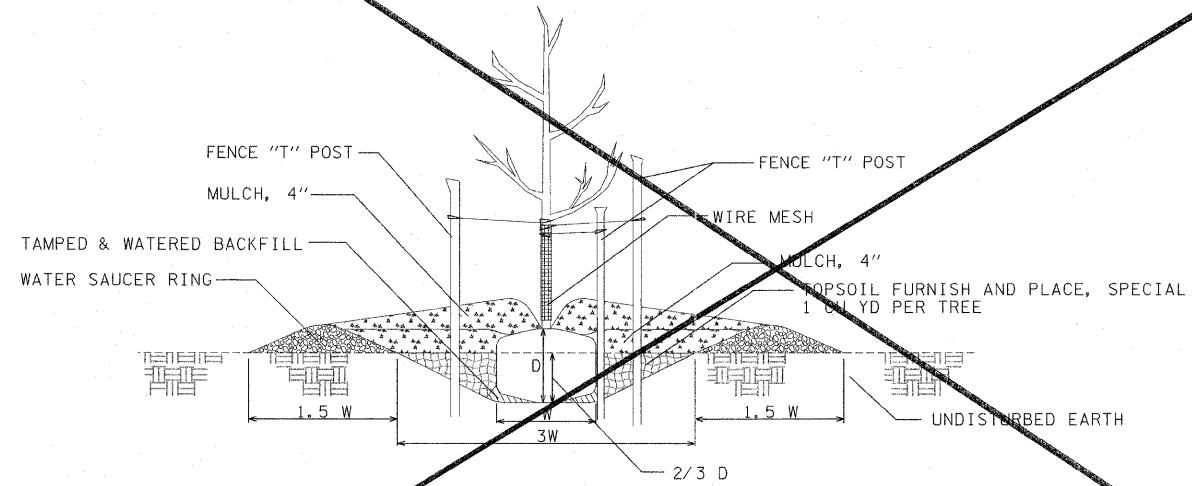
3 PERENNIAL/GROUNDCOVER PLANTING DETAIL
NOT TO SCALE

NOTE: PLANTING RELATIONSHIPS VARY
SEE LANDSCAPE PLAN FOR DETAILS



4 SHRUB PLANTING DETAIL
NOT TO SCALE

NOTE: PRUNING SHALL NOT CHANGE THE HABIT OF THE TREE. ALL CUTS SHALL BE MADE JUST OUTSIDE THE BRANCH BARK RIDGE AND COLLAR, ANGLING AWAY FROM THE STEM. PRUNING SHALL BE LIMITED TO THE REMOVAL OF COMPETING LEADERS, OR DEAD, RUBBING, BROKEN OR DAMAGED BRANCHES AND ONLY AT THE DIRECTION OF THE COMMISSIONER.

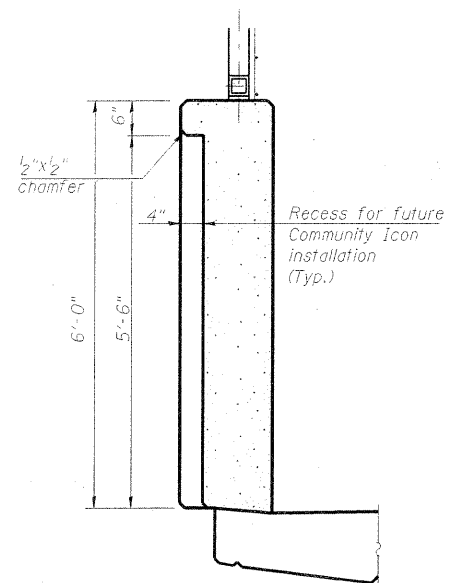


2 FLAT GROUND PLANTING DETAIL
NOT TO SCALE

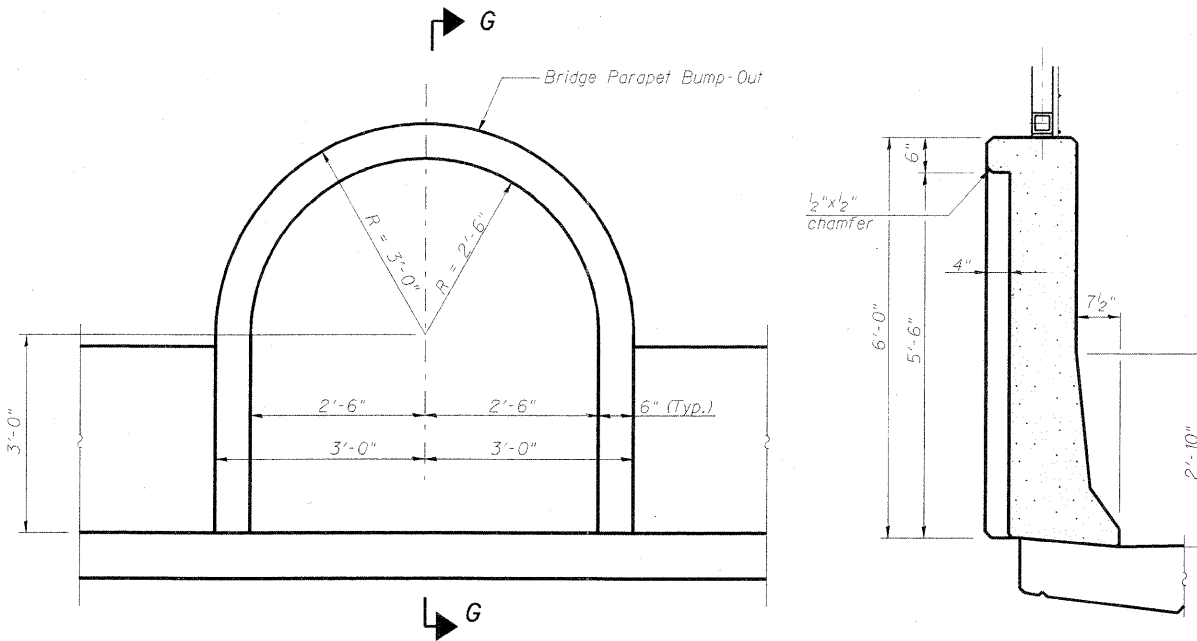
TREE PLANTING SCHEDULE

TREE SIZE CALIPER	SHRUB TREE HEIGHT	EVERGREEN HEIGHT	MIN DIAMETER BALL W	MIN DEPTH BALL D	HOLE DEPTH 2/3 D	HOLE WIDTH 3 W
1/4 IN	2 FT	1.5 FT	10 IN	10 IN	5 IN	30 IN
1/2	3	2	12	12	6	36
3/4	4	3	14	14	7	42
1	5	4	16	16	8	48
1 1/4	6	4 1/2	18	18	9	54
1 1/2	7	5	20	20	9	60
1 3/4	8	6	22	22	10	66
2	9	7	24	24	11	72
2 1/2	10	8	28	28	12	84
3	11	9	32	32	13	96

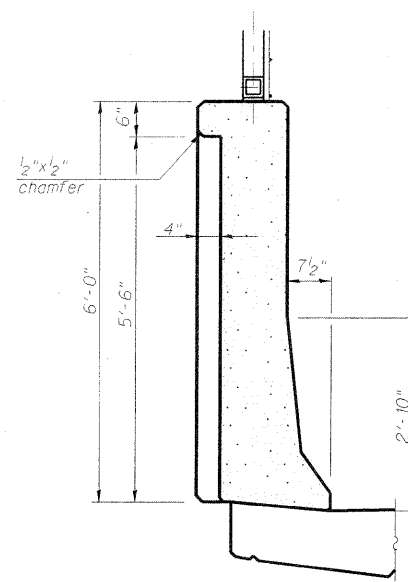
STATE OF ILLINOIS
DEPARTMENT OF TRANSPORTATION



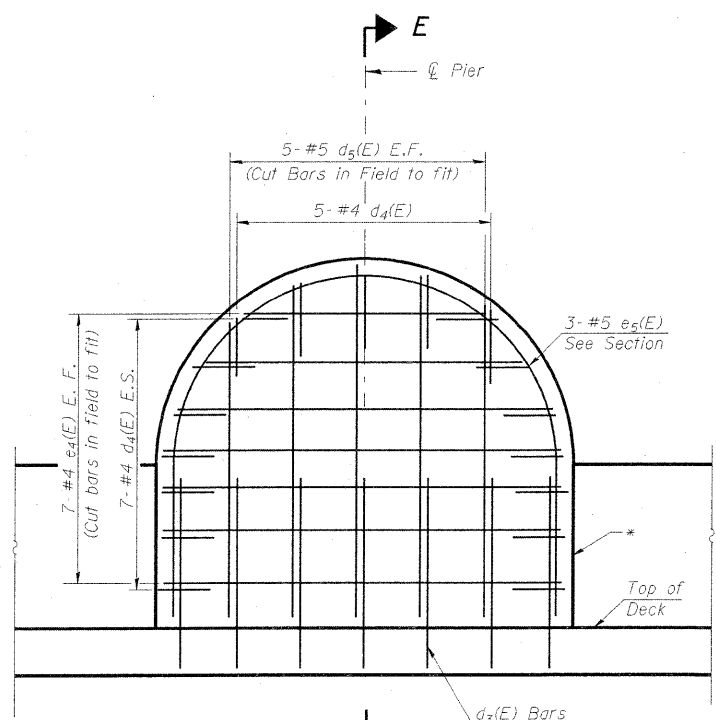
SECTION G-G
(Sidewalk Parapet)



COMMUNITY ICON PARAPET OUTSIDE FACE ELEVATION

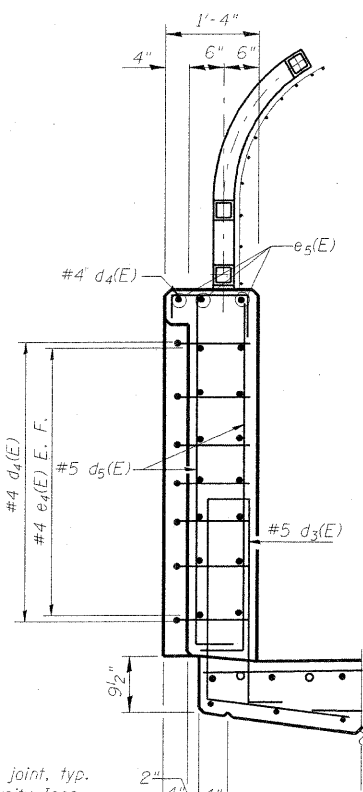


SECTION G-G
(Roadway West Parapet)



DETAIL E

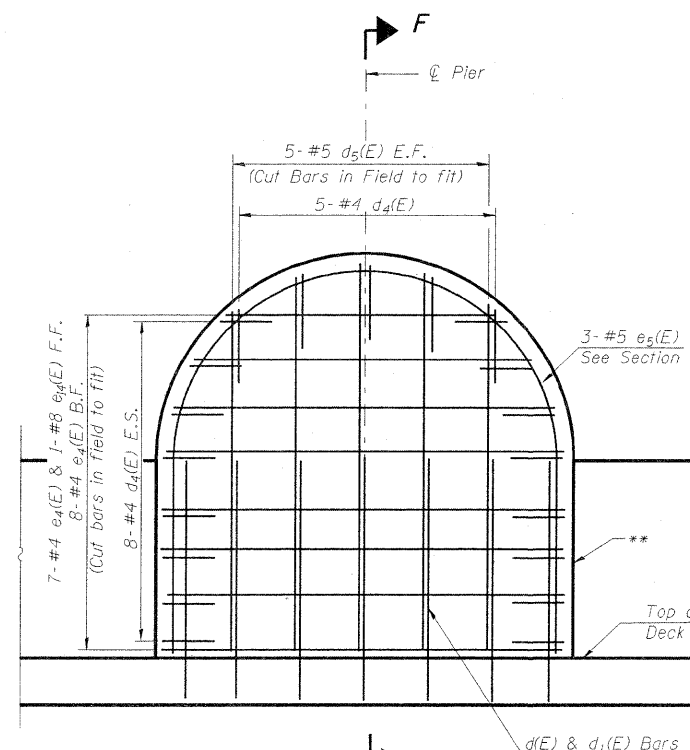
(See Community Icon Parapet Elevation for dimensions)



SECTION E-E

* Sealed, cork filled joint, typ. both sides of Community Icon. See Sht. S13 of S36 for detail.

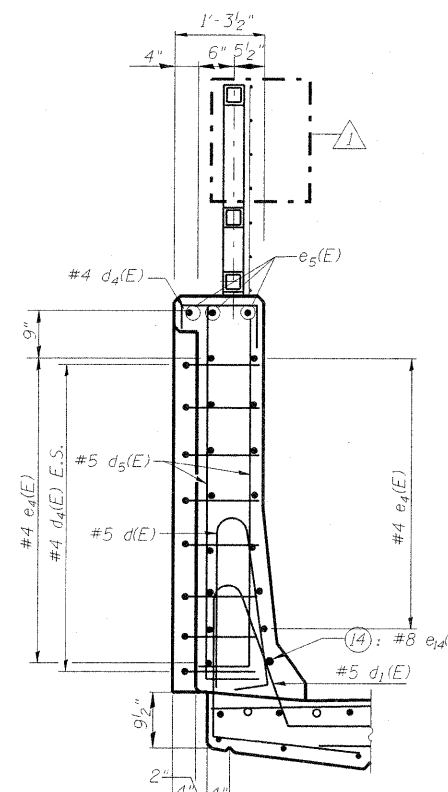
AT SIDEWALK PARAPET



DETAIL F

(See Community Icon Parapet Elevation for dimensions)

AT ROADWAY WEST PARAPET



SECTION F-F

** Aluminum sheet joint in base of parapet; sealed, cork filled joint in top of parapet, typ. both sides of Community Icon. See Sht. S13 of S36 for detail.

**COMMUNITY ICON
PARAPET DETAILS
STRUCTURE NO. 082-0326**

AECOM

303 East Wacker Drive, Suite 600
Chicago, Illinois 60601
Ph: 312.938.0300
Fax: 312.373.6806
www.aecom.com

DESIGNED	-P.J.L.
CHECKED	-D.D.B.
DRAWN	-B.R.D.
CHECKED	-D.D.B.

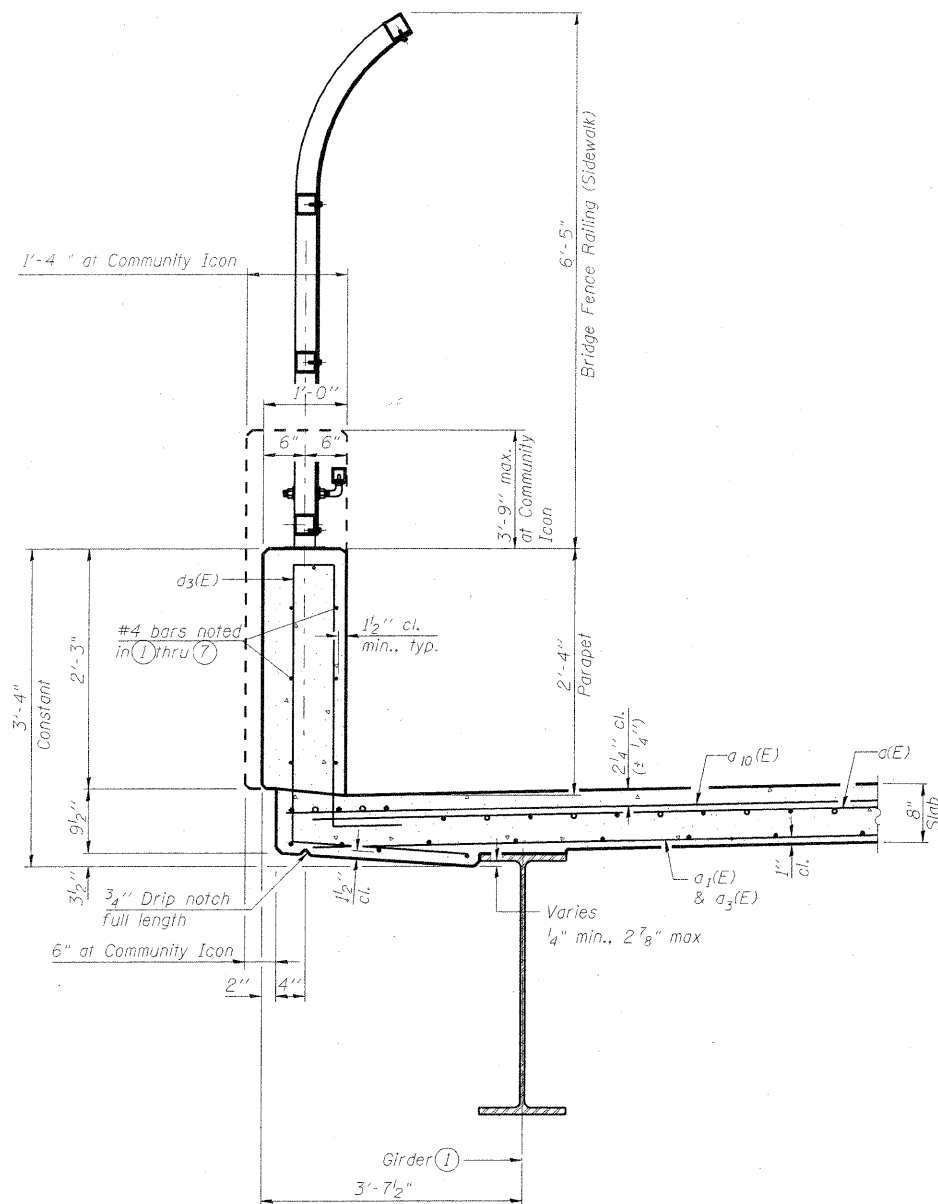
03/31/2011

SHEET NO. S12	F.A.I. RTE.	SECTION	COUNTY	TOTAL SHEETS	SHEET NO.
64	82-1-3HB, 82-2N, 82-1-12RS		ST. CLAIR	352	214
S36 SHEETS	F.A.U. 9166 / F.A.U. 9180		CONTRACT NO. 76C51		
	FED. ROAD DIST. NO.	ILLINOIS	FED. AID PROJECT		

5 FILES
5 DATES

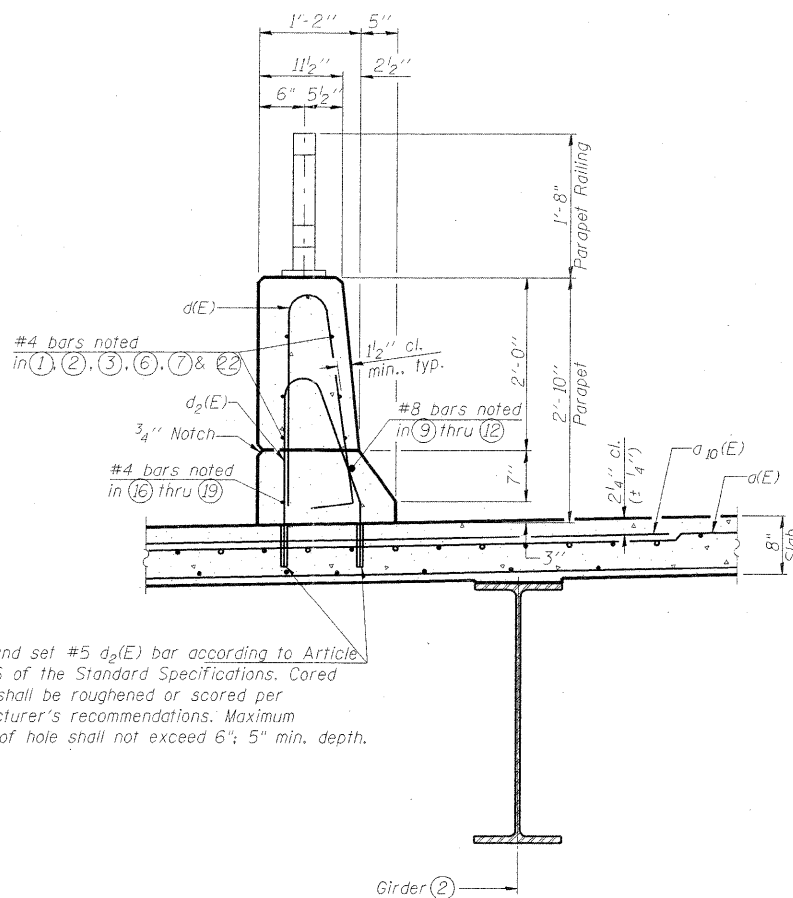
Revised 10/31/11 D.D.B.

STATE OF ILLINOIS
DEPARTMENT OF TRANSPORTATION



SECTION THRU SIDEWALK PARAPET

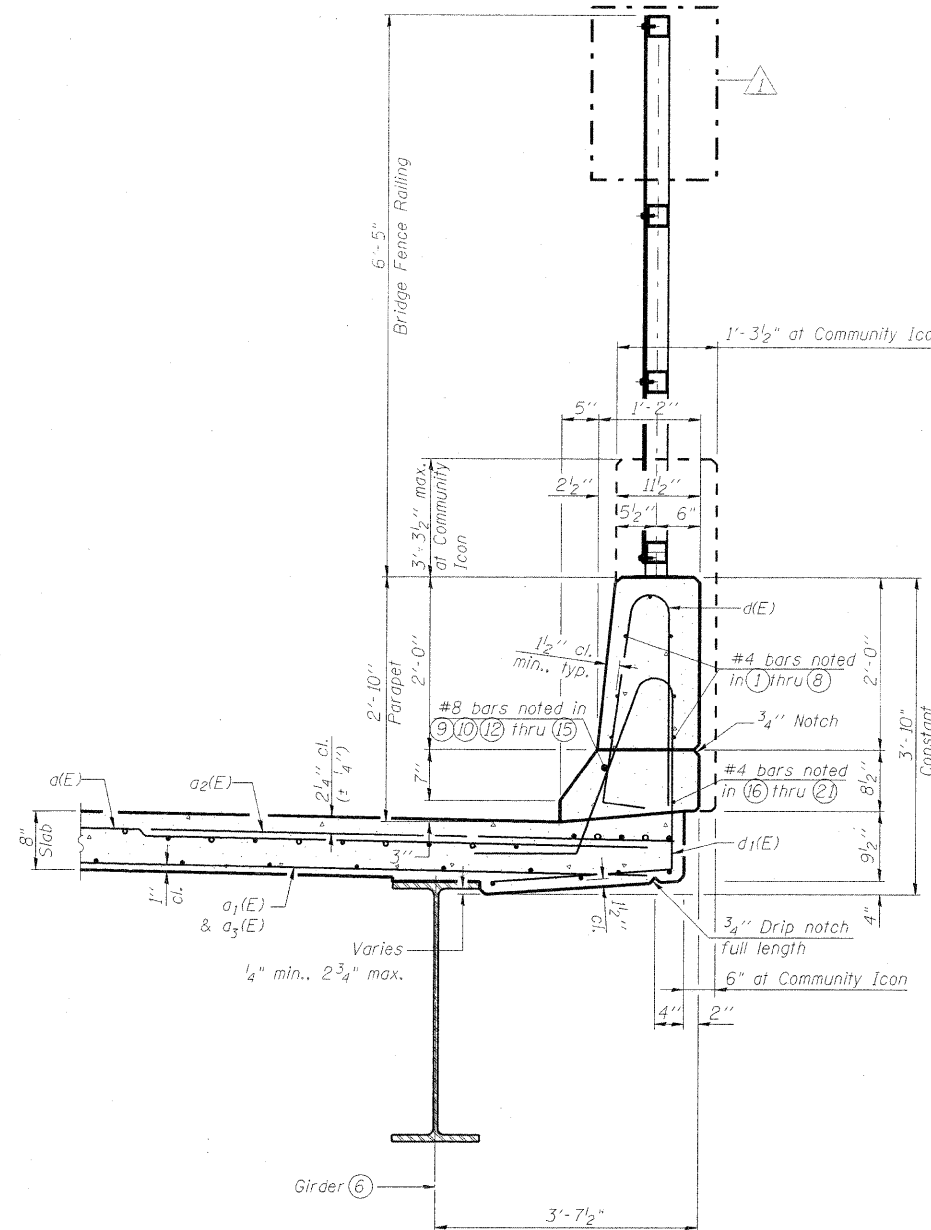
Note: 4" bump-out on outside face of Community Icon, Typ. Sidewalk and Roadway West Parapets.



SECTION THRU ROADWAY EAST PARAPET

(See Deck Cross Section for deck reinforcement)

Core and set #5 $a_2(E)$ bar according to Article 509.06 of the Standard Specifications. Cored holes shall be roughened or scored per manufacturer's recommendations. Maximum depth of hole shall not exceed 6"; 5" min. depth.

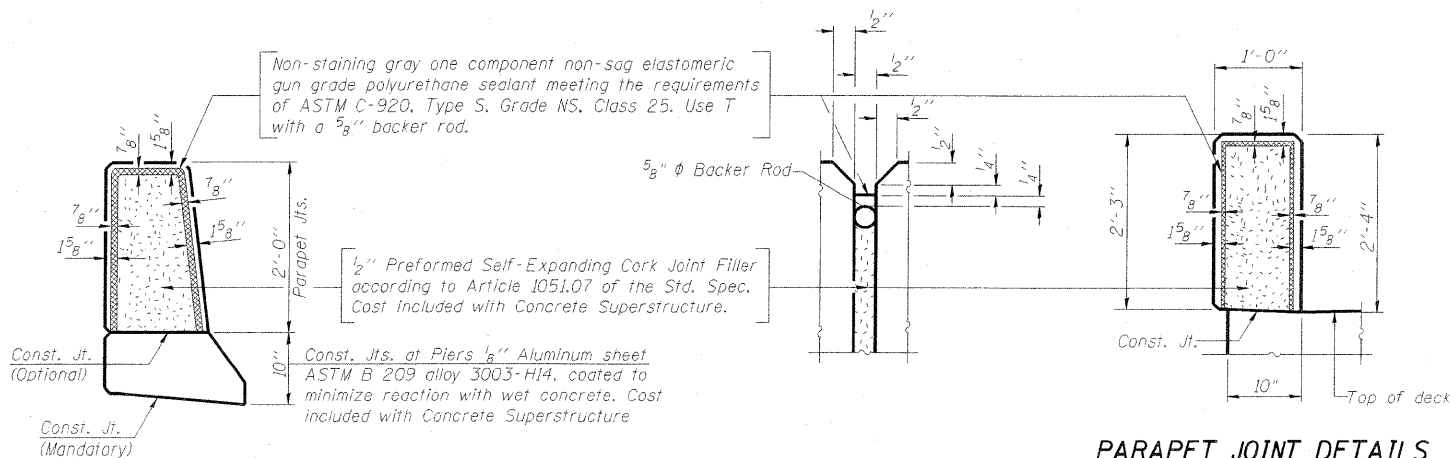


SECTION THRU ROADWAY WEST PARAPET

AECOM

303 East Wacker Drive, Suite 600
Chicago, Illinois 60601
Ph: 312.938.0300
Fax: 312.373.6806
www.aecom.com

DESIGNED	- P.J.L.
CHECKED	- D.D.B.
DRAWN	- B.R.D.
CHECKED	- D.D.B.
03/31/2011	



PARAPET JOINT DETAILS

**PARAPET JOINT DETAILS
AT SIDEWALK**

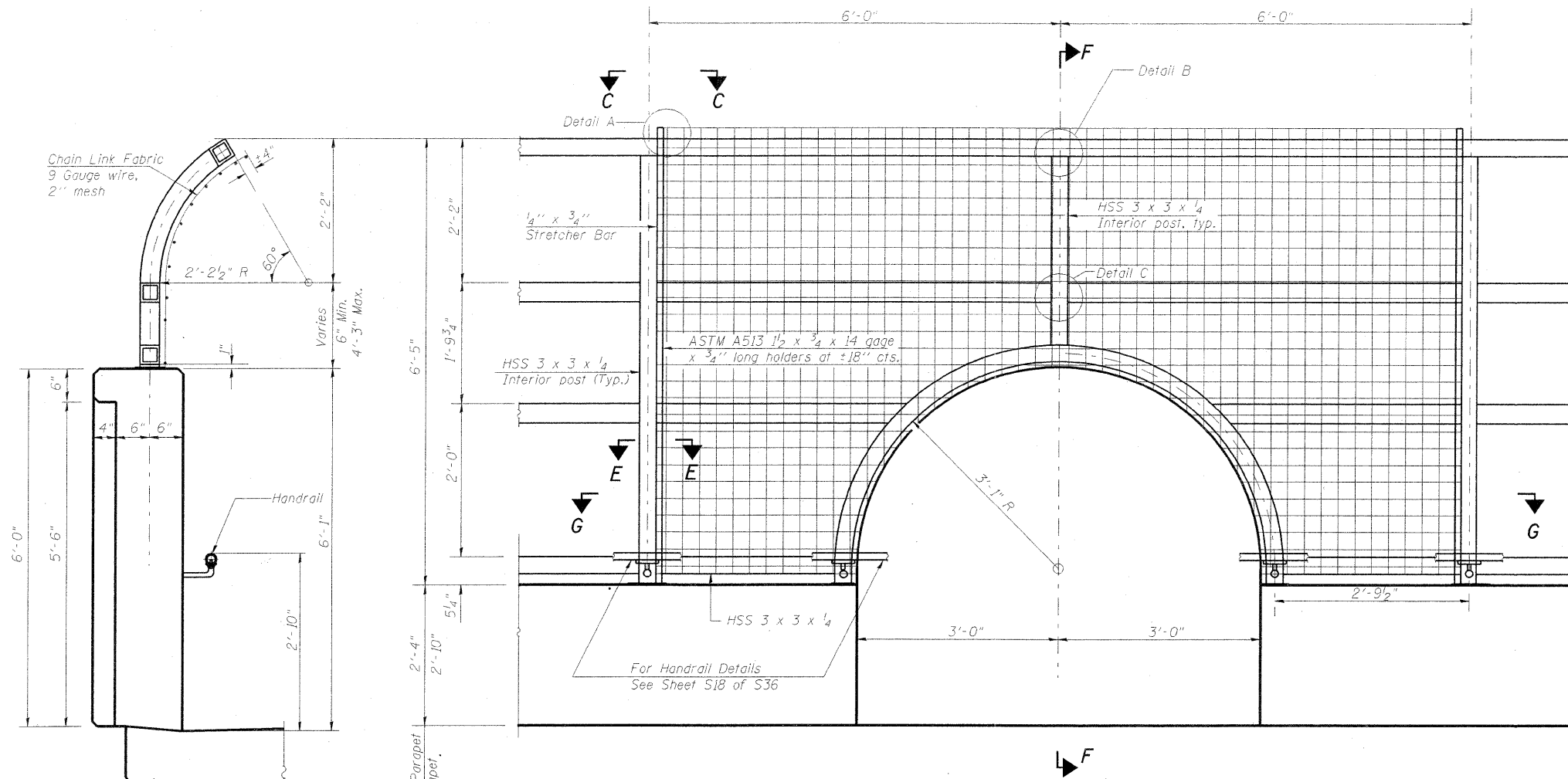
Note:
Reinforcement bars shall not pass thru aluminum sheets and cork joint filler.
Parapet Sections shown on Bridge Deck; details similar on Bridge Approach Slabs.

Parapet Cross References:
Parapet Elevation Views - Sht. 11 of S36
Parapet Details at Community Icon - Sht. S12 of S36
Parapet Reinforcement Schedule - Sht. S15 of S36

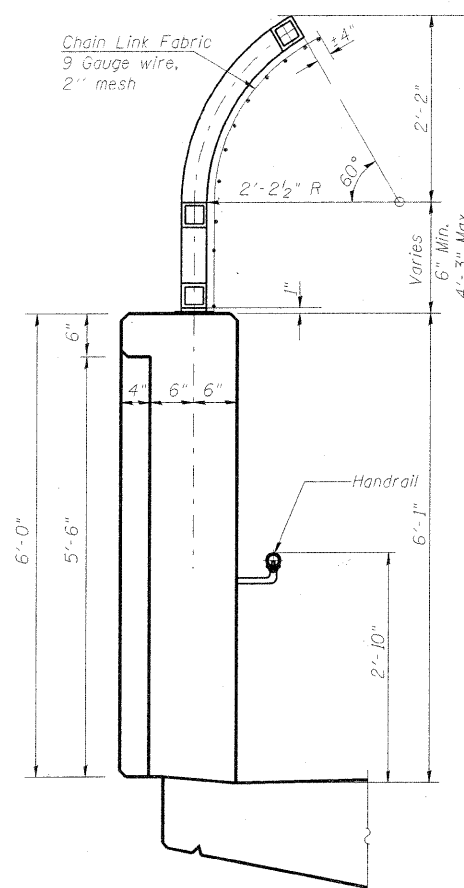
**PARAPET DETAILS
STRUCTURE NO. 082-0326**

SHEET NO. S13	F.A.I. RTE.	SECTION	COUNTY	TOTAL SHEETS	SHEET NO.
64	82-1-3HB, 82-2N, 82-1-12RS	ST. CLAIR	352	215	
S36 SHEETS		F.A.U. 9166 / F.A.U. 9180	CONTRACT NO. 76C51		
		FED. ROAD DIST. NO.	ILLINOIS FED. AID PROJECT		

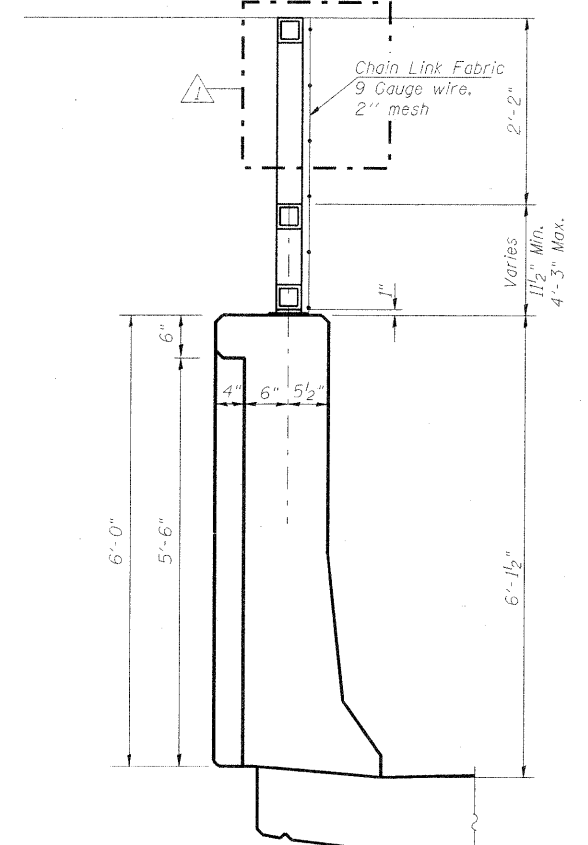
STATE OF ILLINOIS
DEPARTMENT OF TRANSPORTATION



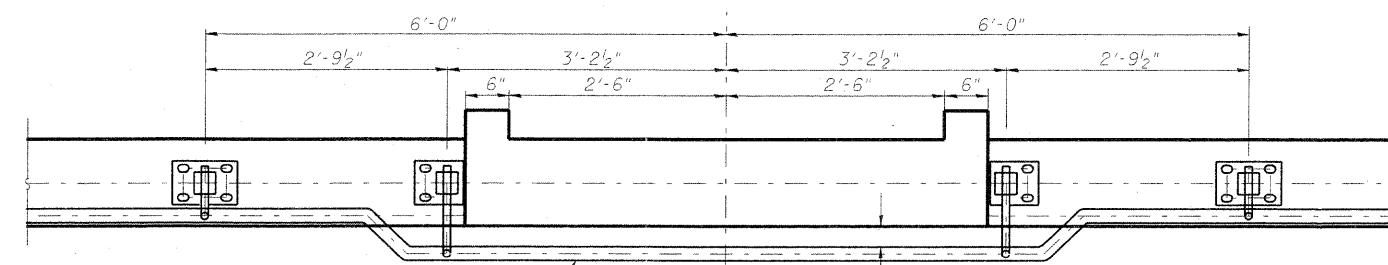
ELEVATION AT PIER
(Showing inside face)



SECTION F-F
(For Sidewalk Parapet)



SECTION F-F
(For Roadway West Parapet)



SECTION G-G

Note:
For details and sections see Sht. S12 of S36.

AECOM
303 East Wacker Drive, Suite 600
Chicago, Illinois 60601
Ph: 312.938.0300
Fax: 312.373.6806
www.aecom.com

DESIGNED	- P.J.L.
CHECKED	- D.D.B.
DRAWN	- B.R.D.
CHECKED	- D.D.B.

03/31/2011

BRIDGE FENCE RAILING DETAILS - II
STRUCTURE NO. 082-0326

SHEET NO. S19 S36 SHEETS	F.A.I. RTE.	SECTION	COUNTY	TOTAL SHEETS	SHEET NO.
	64	82-1-3HB, 82-2N, 82-1-12RS	ST. CLAIR	352	221
F.A.U. 9166 / F.A.U. 9180		CONTRACT NO. 76C51			
FED. ROAD DIST. NO.		ILLINOIS	FED. AID PROJECT		