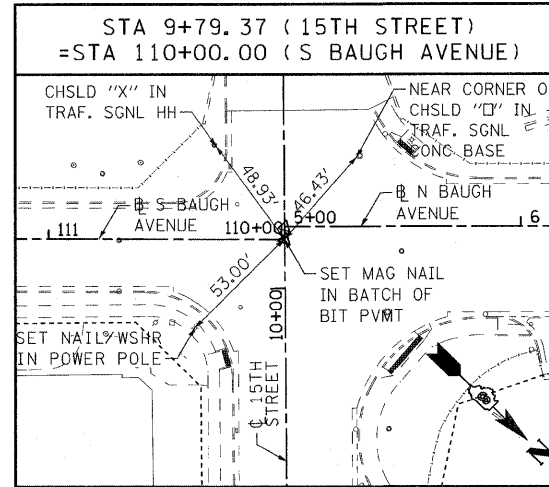
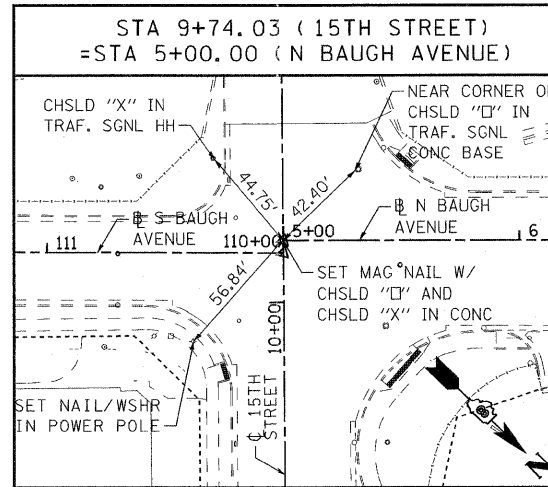
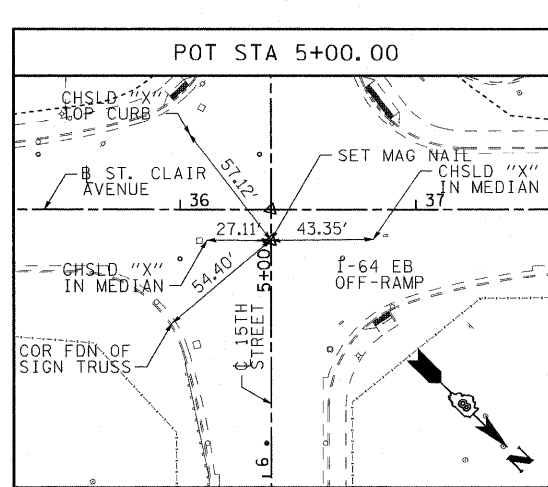
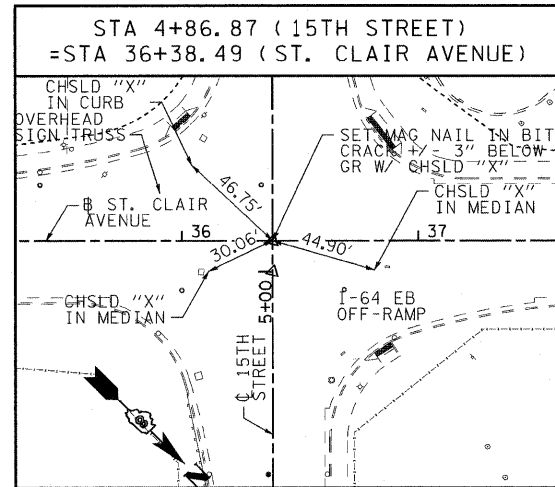
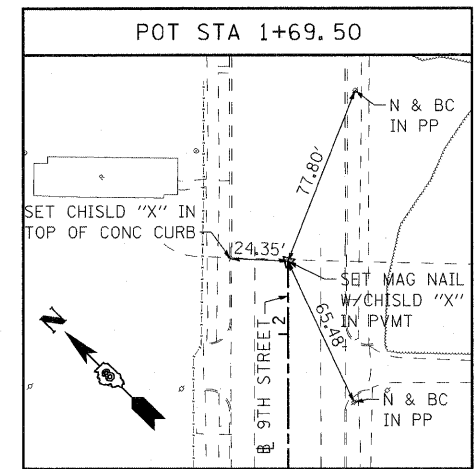


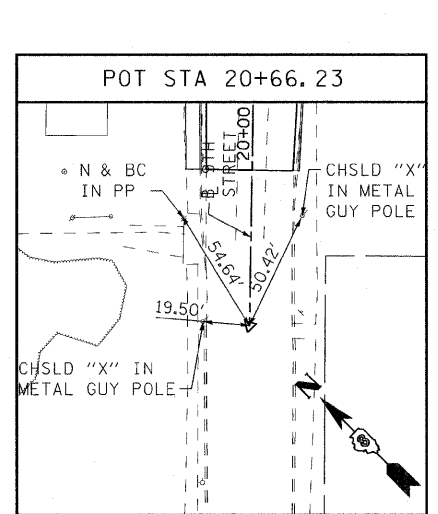
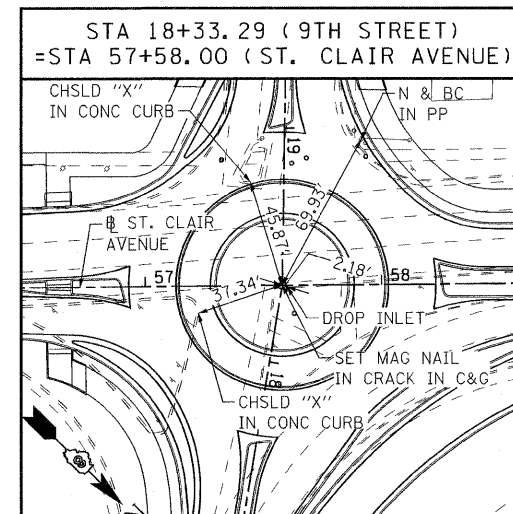
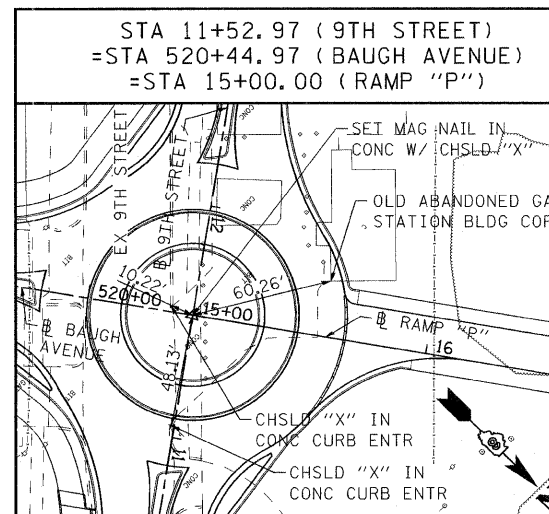
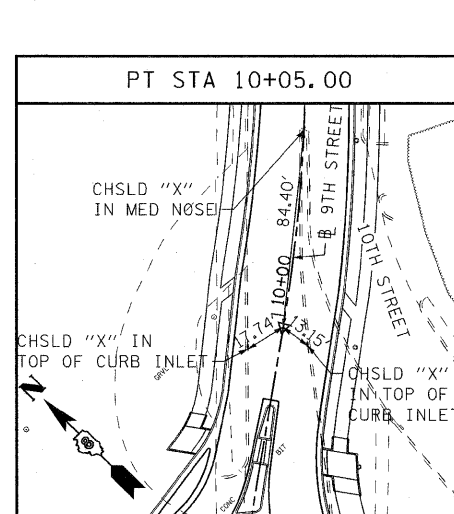
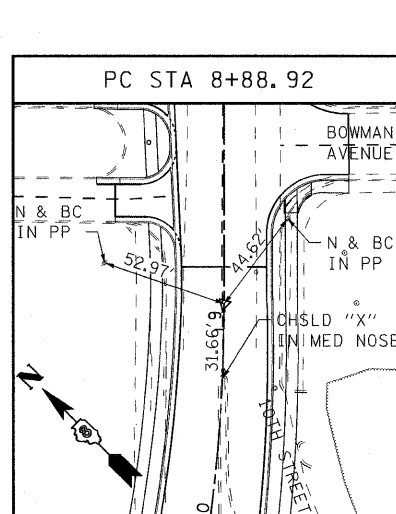
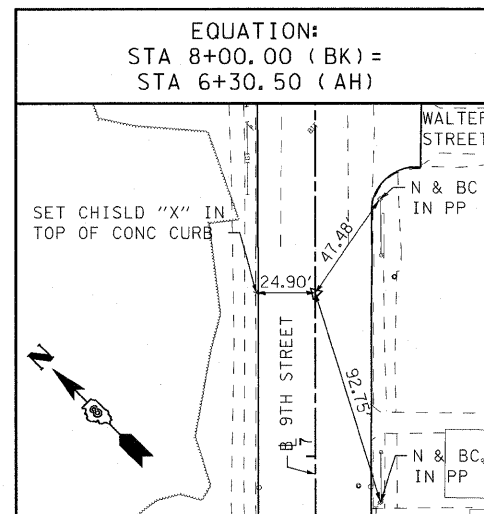
15TH STREET CENTERLINE



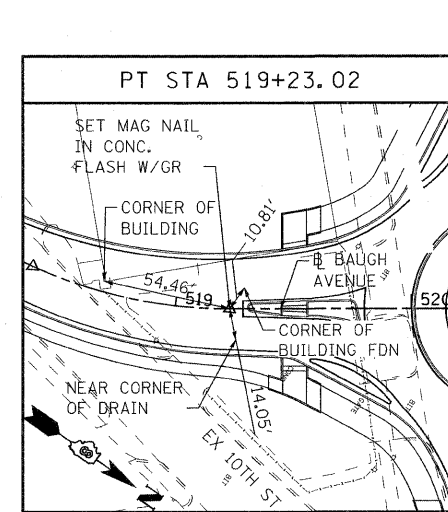
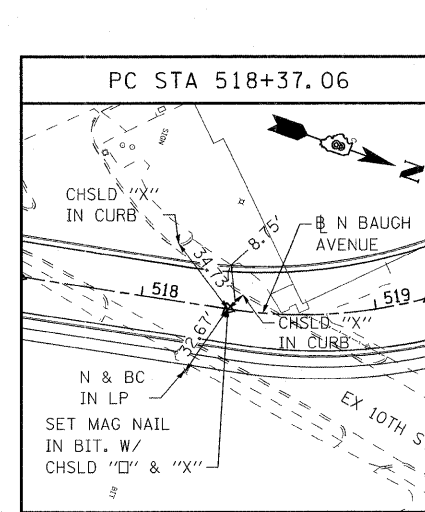
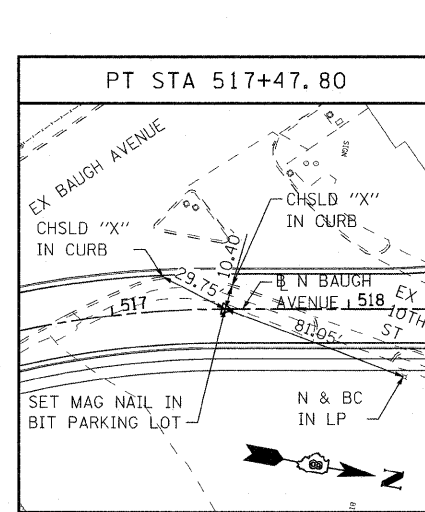
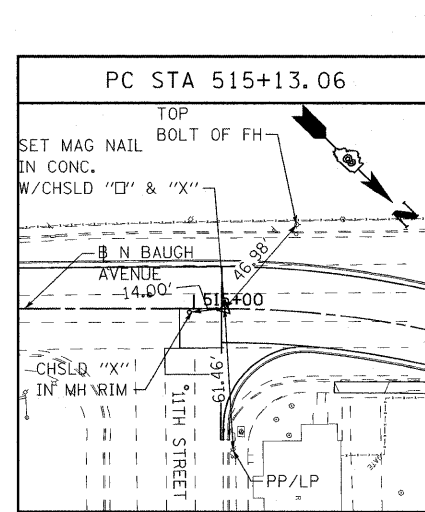
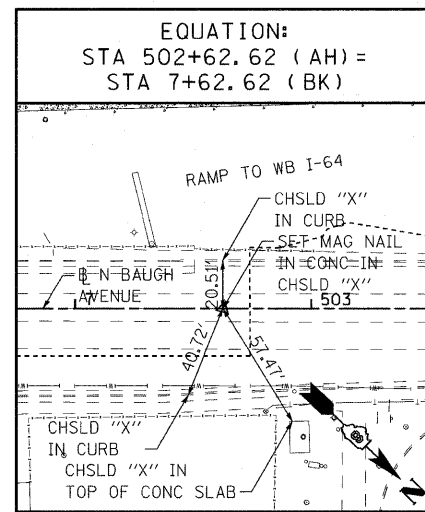
9TH STREET BASELINE



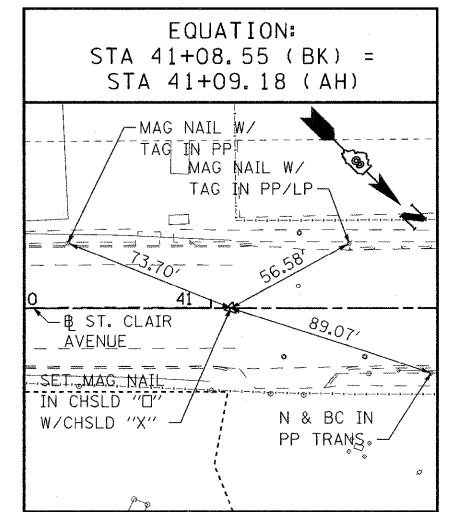
9TH STREET BASELINE



BAUGH AVENUE BASELINE



ST. CLAIR AVENUE BASELINE



STATE OF ILLINOIS
DEPARTMENT OF TRANSPORTATION

ALIGNMENT, TIES, AND BENCHMARKS

SCALE: NONE SHEET NO. 3 OF 4 SHEETS STA. ----- TO STA. -----

F.A.U. RTE.	SECTION	COUNTY	TOTAL SHEETS	SHEET NO.
82-1-3HB, 82-2N, 82-1-12RS		ST. CLAIR	352	28
FAI 64/9166/9180		CONTRACT NO. 76C51		
FED. ROAD DIST. NO. [ILLINOIS] FED. AID PROJECT				

6/8/2011 10:48:30 AM

FILE NAME = DBTRI-76C51-sh1-aligntiebm-01-04.dgn

USER NAME = jlt
MODEL NAME = DBTRI-76C51-sh1-aligntiebm-03
PLOT SCALE = 1:40
PLOT DATE = 6/9/2011

DESIGNED - LDC
DRAWN - JDF
CHECKED - GEB
DATE - 03/31/11

REVISED -
REVISED -
REVISED -
REVISED -