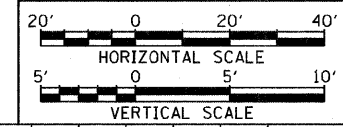
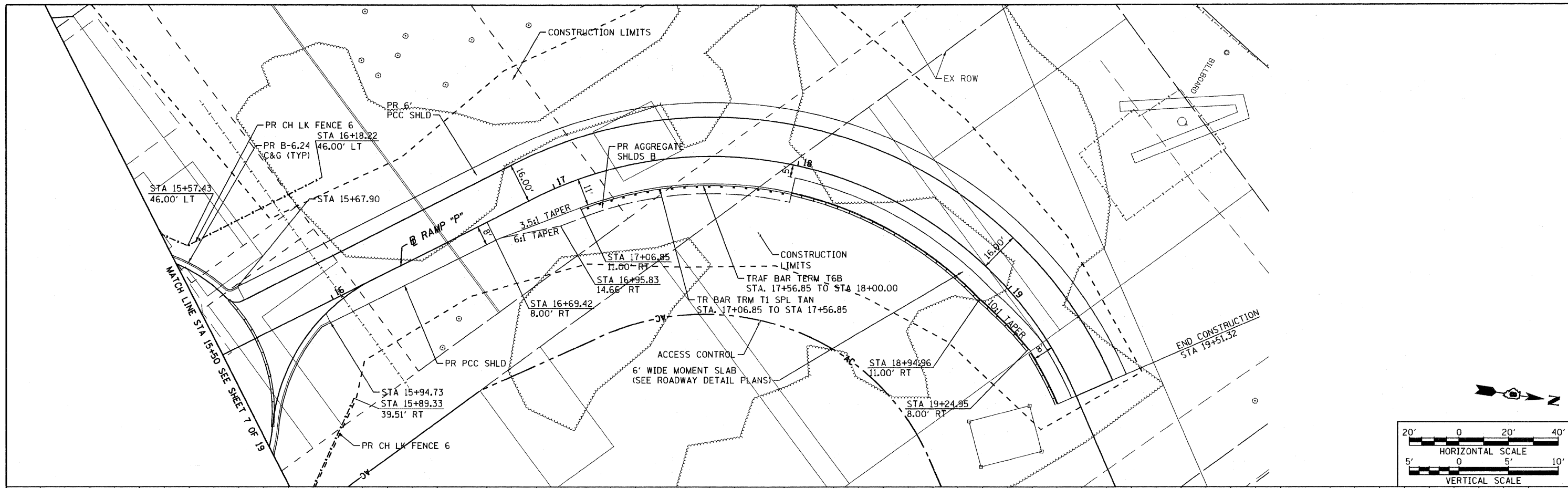
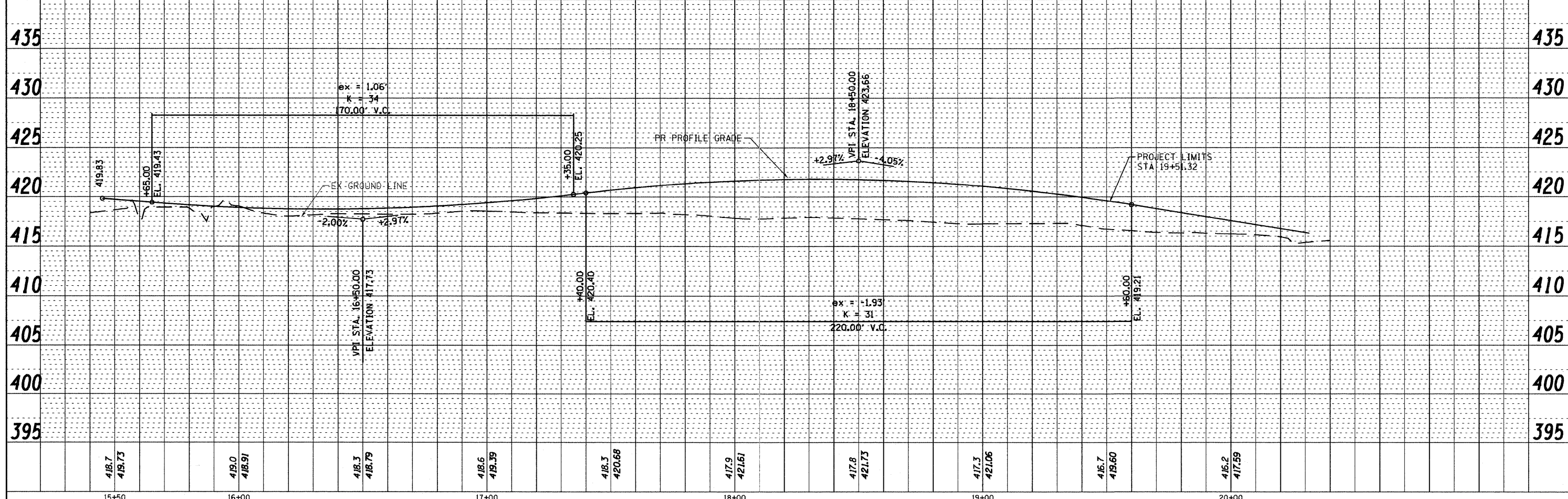


PLAN	SURVEYED	DATE
	PLOTTED	
	CHECKED	
	BY	
	NO.	
	FILE NAME	



PROFILE	SURVEYED	DATE
	PLOTTED	
	CHECKED	
	BY	
	NO.	
	FILE NAME	



FILE NAME = D8TRI-76C51-sht-plnpro-001-018.dgn	USER NAME = jlt	DESIGNED - LDC	REVISED -	STATE OF ILLINOIS DEPARTMENT OF TRANSPORTATION	PLAN AND PROFILE RAMP P	F.A.U. RTE.	SECTION	COUNTY	TOTAL SHEETS	SHEET NO.
MODEL NAME = D8TRI-76C51-sht-plnpro-008	DRAWN - JDF	CHECKED - GEB	REVISED -			• 82-1-3HB, 82-2N, 82-1-12RS	ST. CLAIR	352	42	
PLOT SCALE = 1:40	DATE - 03/31/11	DATE - 03/31/11	REVISED -			• FAI 64/9166/9180	CONTRACT NO. 76C51			
PLOT DATE = 6/8/2011						FED. ROAD DIST. NO.	ILLINOIS FED. AID PROJECT			

6/8/2011 AM 8:54:41 AM

P:\08-0030 CTE TRILEVEL\988 CAD\981 DRAWINGS\08 CONTRACT SHEET\CL\ROADWAY PLANS\D8TRI-76C51-SHT-PLNPRO-001-018.DGN