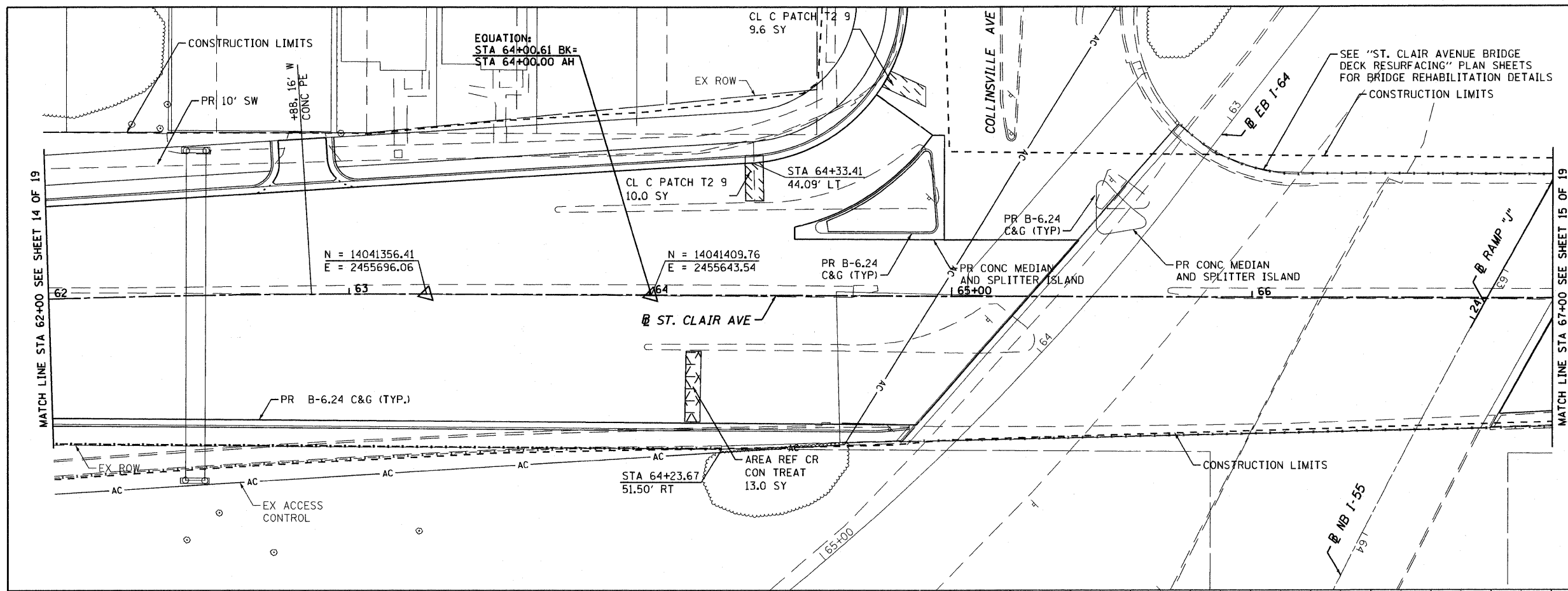
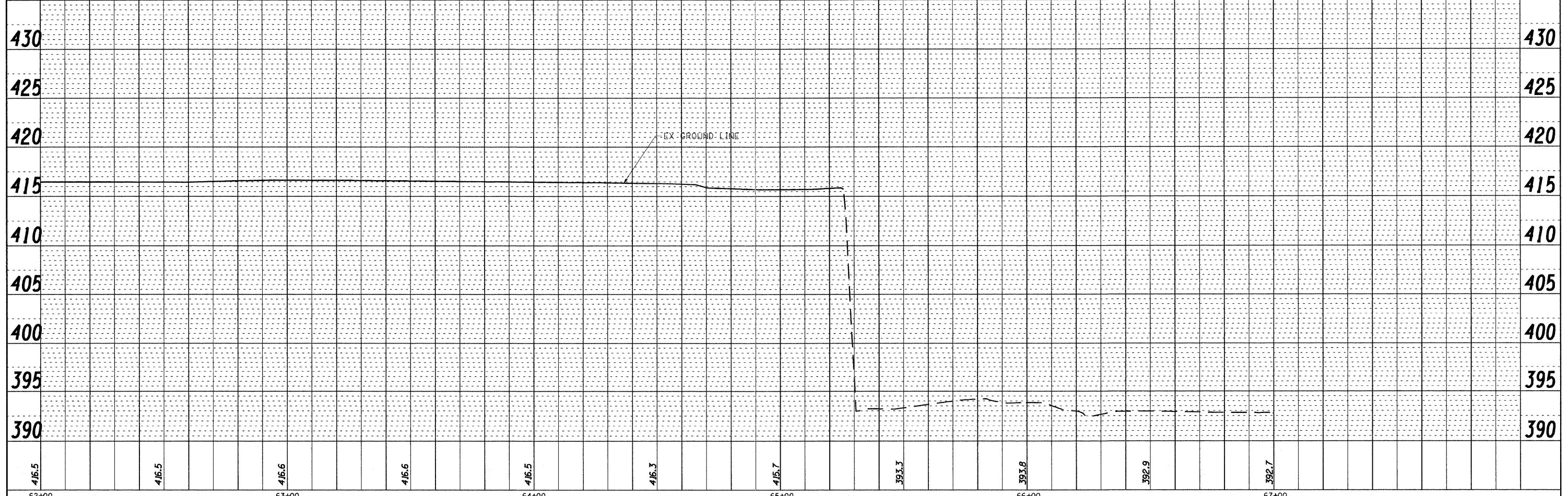
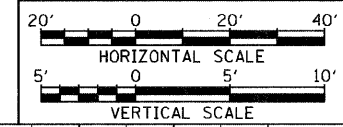
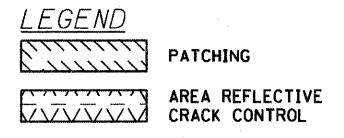


DATE	
BY	
PLAN	
NO. _____	
NOTE BOOK	
NO. _____	
DATE	
BY	
PROFILING	
NO. _____	
NOTE BOOK	
NO. _____	
DATE	
BY	

DATE	
BY	
PROFILING	
NO. _____	
NOTE BOOK	
NO. _____	
DATE	
BY	



AFTER THE MILLING OF THE HMA SURFACE ON THE EXISTING APPROACH PAVEMENTS TO THE ST. CLAIR AVENUE BRIDGE OVER EB I-55/I-70/I-64, THE ENGINEER WILL DETERMINE THE REPAIR LIMITS OF THE APPROACH PAVEMENT AND THE CONTRACTOR SHALL REPAIR THESE LIMITS ACCORDING TO THE SPECIAL PROVISION FOR BRIDGE APPROACH PAVEMENT REPAIR.



FILE NAME = DBTRI-76C51-sht-plnpro-001-018.dgn	USER NAME = jlt	DESIGNED - LDC	REVISED -	STATE OF ILLINOIS DEPARTMENT OF TRANSPORTATION	PLAN AND PROFILE ST. CLAIR AVENUE		F.A.U. RTE.	SECTION	COUNTY	TOTAL SHEETS	SHEET NO.
MODEL NAME = DBTRI-76C51-sht-plnpro-014	DRAWN - JDF	REVISED -	• 82-1-3HB, 82-2N, 82-1-12RS				ST. CLAIR	352	48		
PLOT SCALE = 1:40	CHECKED - GEB	REVISED -	• FAI 64/9166/9180		CONTRACT NO. 76C51						
PLOT DATE = 6/8/2011	DATE - 03/31/11	REVISED -	FED. ROAD DIST. NO. ILLINOIS FED. AID PROJECT								
SCALE: 1"=20'				SHEET NO. 14 OF 19 SHEETS		STA. 62+00.00 TO STA. 67+00.00					

6/8/2011 8:54:48 AM

P:\08-0030 CTE TRILEVEL\900 CAD\901 DRAWINGS\08 CONTRACT\08 SHEET\CTI\ROADWAY PLANS\08TRI-76C51-SHT-PLNPRO-001-018.DGN