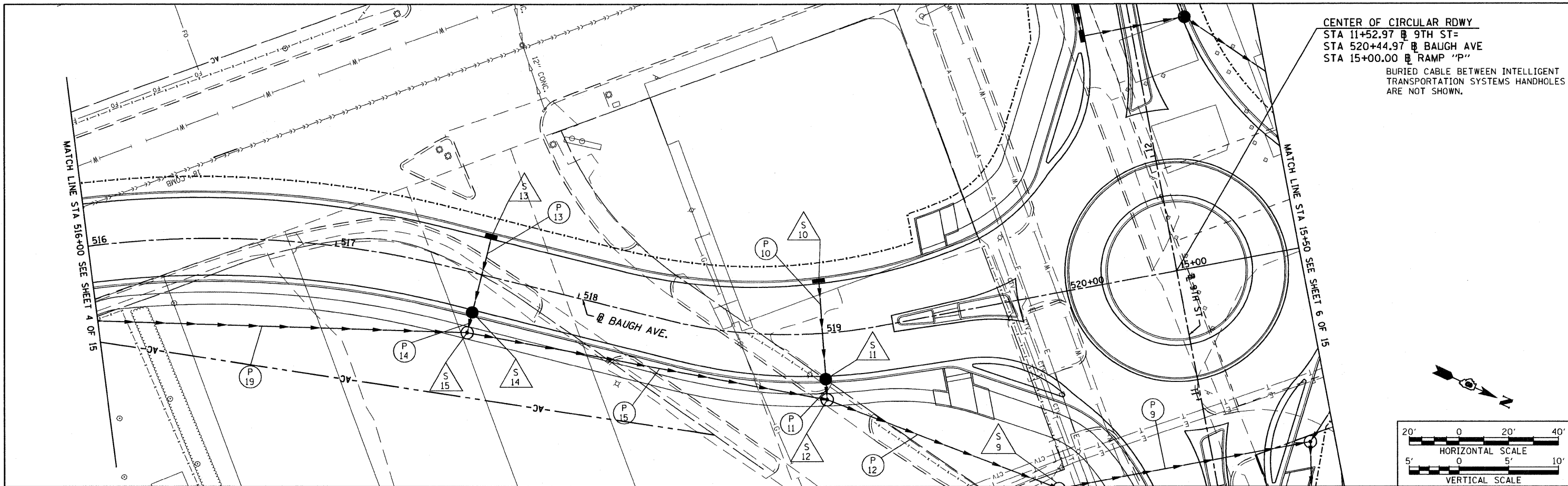
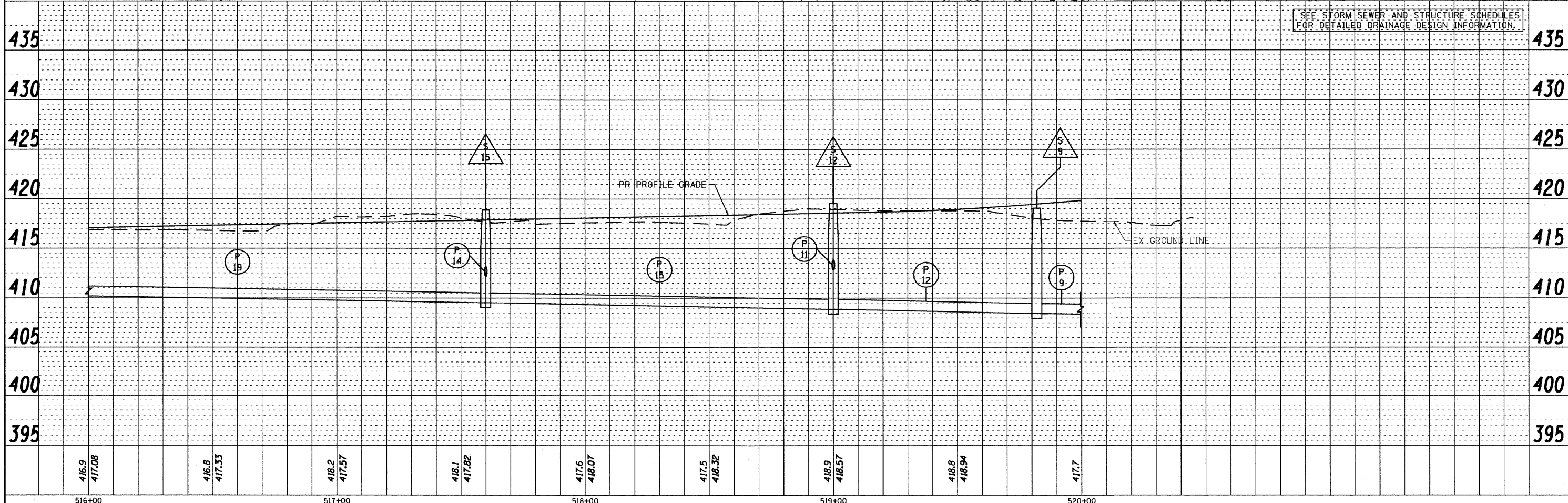
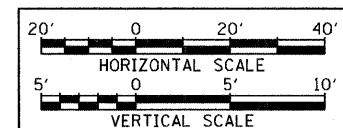


PLAN	SUBMITTED	DATE
	PLOTTED	
	CHECKED	
	BY	
	NO.	
	FILE NAME	

PROFILE	SUBMITTED	DATE
	PLOTTED	
	CHECKED	
	BY	
	NO.	
	FILE NAME	



CENTER OF CIRCULAR RDWY
 STA 11+52.97 @ 9TH ST=
 STA 520+44.97 @ BAUGH AVE
 STA 15+00.00 @ RAMP "P"
 BURIED CABLE BETWEEN INTELLIGENT
 TRANSPORTATION SYSTEMS HANDHOLES
 ARE NOT SHOWN.



SEE STORM SEWER AND STRUCTURE SCHEDULES
 FOR DETAILED DRAINAGE DESIGN INFORMATION.

FILE NAME = D8TRI-76C51-sht-drnutil-001-014.dgn	USER NAME = jlt	DESIGNED - LDC	REVISED -	STATE OF ILLINOIS DEPARTMENT OF TRANSPORTATION	DRAINAGE AND UTILITY PLAN PROFILE BAUGH AVENUE	F.A.U. RTE.	SECTION	COUNTY	TOTAL SHEETS	SHEET NO.
MODEL NAME = D8TRI-76C51-sht-drnutil-005	DRAWN - JDF	REVISIONS	• 82-1-3HB, 82-2N, 82-1-12RS			ST. CLAIR	352	97		
PLOT SCALE = 1:40	CHECKED - GEB	REVISIONS	• FAI 64/9166/9180			CONTRACT NO. 76C51				
PLOT DATE = 6/8/2011	DATE - 03/31/11	REVISIONS	FED. ROAD DIST. NO. ILLINOIS FED. AID PROJECT							
SCALE: 1"=20'		SHEET NO. 5 OF 15 SHEETS		STA. 516+00.00 TO STA. 15+50.00		FED. ROAD DIST. NO. ILLINOIS FED. AID PROJECT				

6/8/2011 8:35:42 AM

P:\08-0030_CTE_TRL\LEVEL\980_CAD\081_DRAWINGS\08_CONTRACT\08_SHEET\08_VIL\DRAINAGE\08TRI-76C51-SHT-DRNUTIL-001-014.DGN