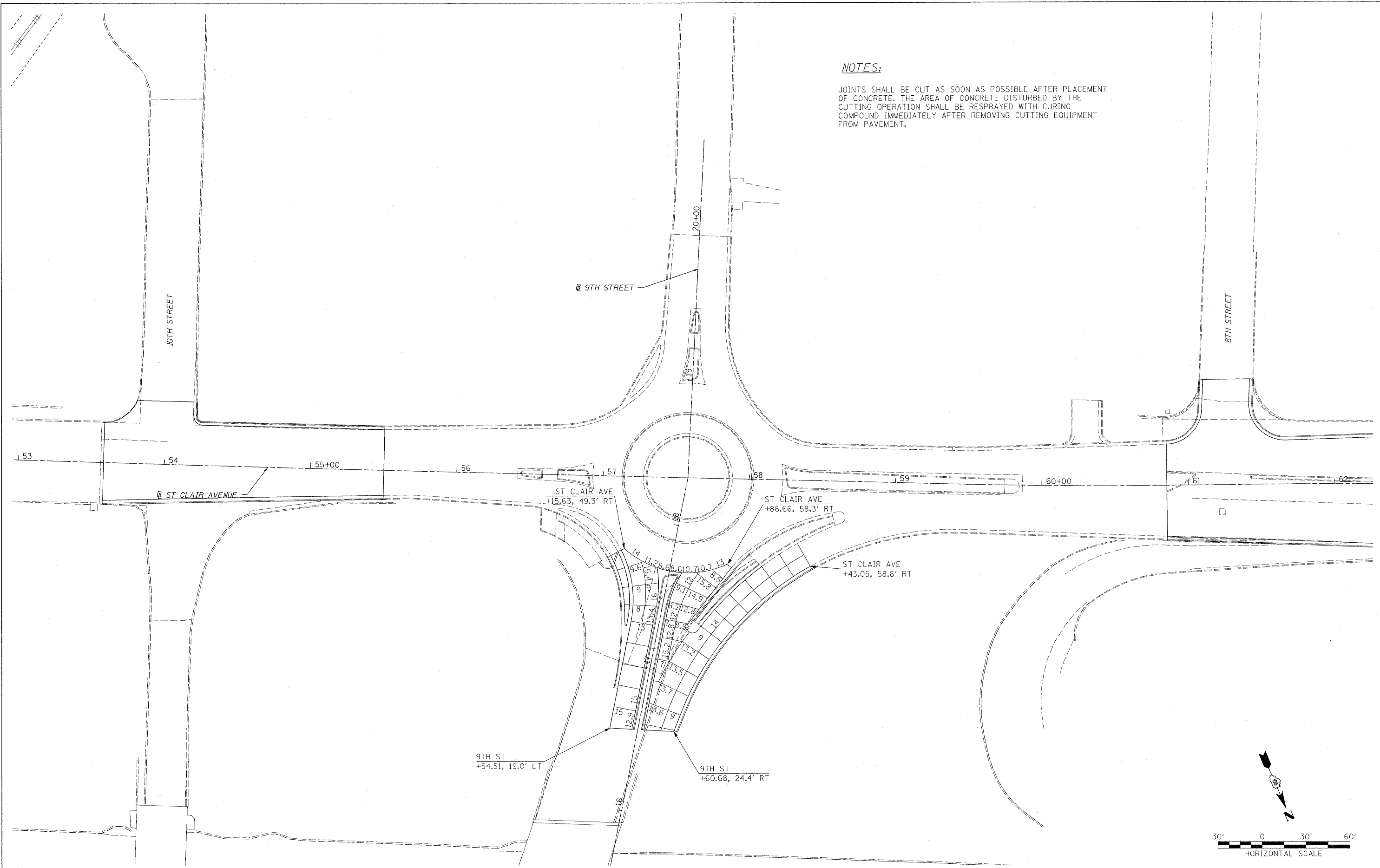


NOTES:

JOINTS SHALL BE CUT AS SOON AS POSSIBLE AFTER PLACEMENT OF CONCRETE. THE AREA OF CONCRETE DISTURBED BY THE CUTTING OPERATION SHALL BE RESPRAYED WITH CURING COMPOUND IMMEDIATELY AFTER REMOVING CUTTING EQUIPMENT FROM PAVEMENT.



FILE NAME = DBTR1-76C51-shr-joint-01-26.dgn

USER NAME = maransk
 DESIGNED BS
 DRAWN BS
 CHECKED DBM
 PLOT DATE = MAR. 31, 2011
 DATE 08/18/2011

REVISED -
 REVISED -
 REVISED -
 REVISED -

**STATE OF ILLINOIS
 DEPARTMENT OF TRANSPORTATION**

JOINT PLAN

SCALE: 1"=30'
 SHEET NO. 2 OF 6 SHEETS
 STA. ----- TO STA. -----

| F.A. RTE. | SECTION | COUNTY | TOTAL SHEETS | SHEET NO. |
|------------------------------|---------------------------|-----------|--------------|--------------------|
| • 82-1-3HB, 82-2N, 82-1-12RS | | ST. CLAIR | 352 | 135 |
| • 9166/9180/9213/9214 | | | | CONTRACT NO. 76C51 |
| FED. ROAD DIST. NO. | ILLINOIS FED. AID PROJECT | | | |