

STATE OF ILLINOIS  
DEPARTMENT OF TRANSPORTATION

**SIDEWALK CURB LINE**

Location	Station	Offset (Left)	Theoretical Grade Elevations
End N. Appr. Pav't.	12+97.41	-32.17	419.23
A	13+07.41	-32.17	419.52
B	13+17.41	-32.17	419.86
Bk. N. Abut.	13+27.41	-32.17	420.20

**EAST CURB LINE**

Location	Station	Offset (Left)	Theoretical Grade Elevations
End N. Appr. Pav't.	12+99.05	-20.58	419.51
A	13+09.05	-20.58	419.81
B	13+19.05	-20.58	420.15
Bk. N. Abut.	13+29.05	-20.58	420.49

**EAST EDGE OF LANE LT.**

Location	Station	Offset (Left)	Theoretical Grade Elevations
End N. Appr. Pav't.	12+99.27	-19.00	419.55
A	13+09.27	-19.00	419.85
B	13+19.27	-19.00	420.19
Bk. N. Abut.	13+29.27	-19.00	420.53

**WEST EDGE OF LANE LT.**

Location	Station	Offset (Left)	Theoretical Grade Elevations
End N. Appr. Pav't.	13+01.39	-4.00	419.91
A	13+11.39	-4.00	420.22
B	13+21.39	-4.00	420.56
Bk. N. Abut.	13+31.39	-4.00	420.90

**ROADWAY PGL**

Location	Station	Offset	Theoretical Grade Elevations
End N. Appr. Pav't.	13+01.96	0.00	420.00
A	13+11.96	0.00	420.32
B	13+21.96	0.00	420.66
Bk. N. Abut.	13+31.96	0.00	421.00

**EAST EDGE OF LANE RT.**

Location	Station	Offset (Right)	Theoretical Grade Elevations
End N. Appr. Pav't.	13+02.53	4.00	419.94
A	13+12.53	4.00	420.26
B	13+22.53	4.00	420.60
Bk. N. Abut.	13+32.53	4.00	420.94

**WEST EDGE OF LANE RT.**

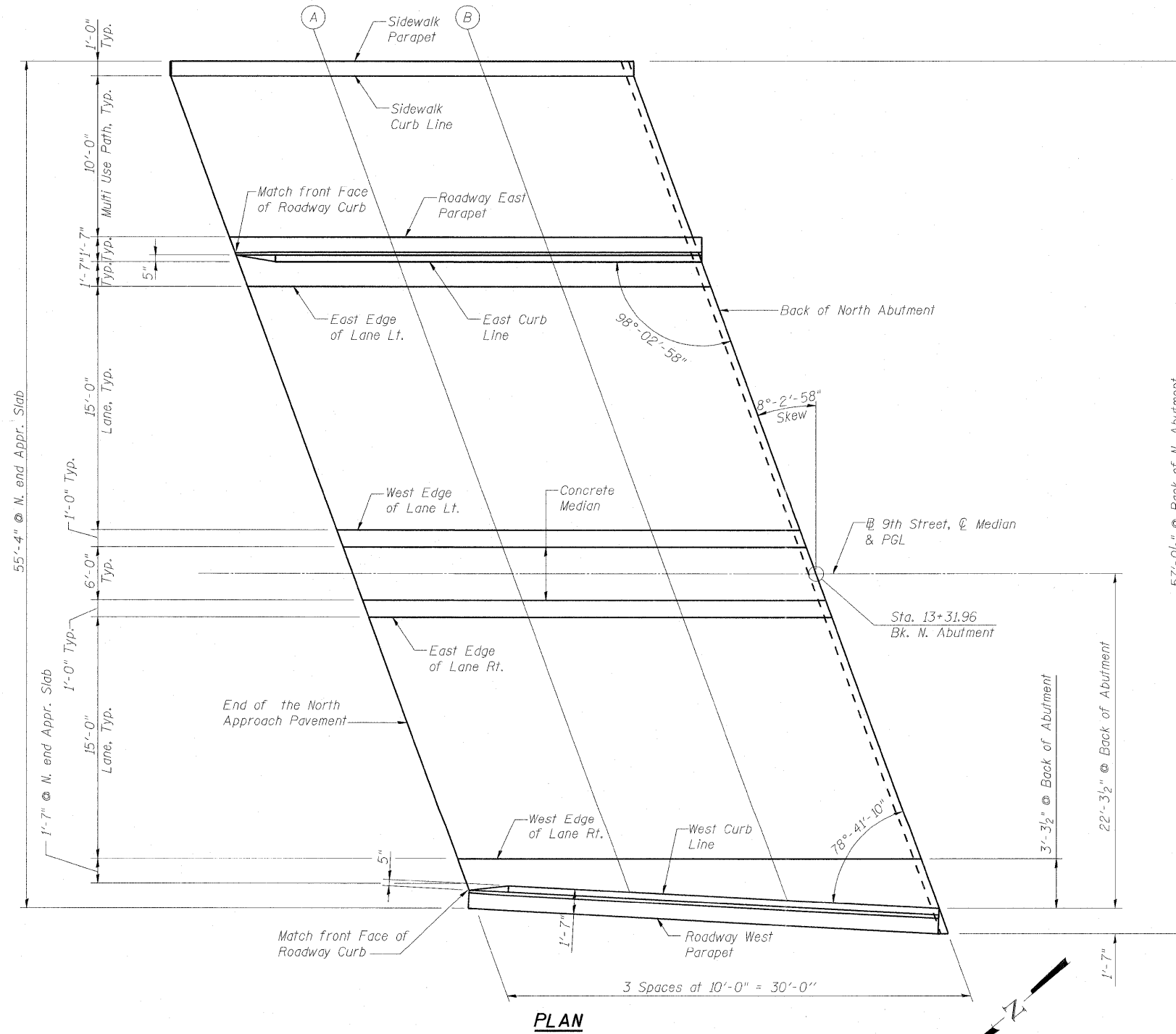
Location	Station	Offset (Right)	Theoretical Grade Elevations
End N. Appr. Pav't.	13+04.65	19.00	419.70
A	13+14.65	19.00	420.03
B	13+24.65	19.00	420.37
Bk. N. Abut.	13+34.65	19.00	420.71

**WEST CURB LINE**

Location	Station	Offset (Right)	Theoretical Grade Elevations
End N. Appr. Pav't.	13+05.11	20.58	419.68
A	13+15.11	21.15	420.00
B	13+25.11	21.72	420.33
Bk. N. Abut.	13+35.11	22.29	420.66

**TOP OF NORTH APPROACH SLAB ELEVATIONS  
STRUCTURE NO. 082-0326**

SHEET NO.	F.A.I. RTE.	SECTION	COUNTY	TOTAL SHEETS	SHEET NO.
S7	64	82-1-3HB, 82-2N, 82-1-12RS	ST. CLAIR	352	209
S36 SHEETS	F.A.U. 9166 / F.A.U. 9180		CONTRACT NO. 76C51		
FED. ROAD DIST. NO.		ILLINOIS FED. AID PROJECT			



**AECOM**  
303 East Wacker Drive, Suite 600  
Chicago, Illinois 60601  
Ph: 312.938.0300  
Fax: 312.373.6806  
www.aecom.com

DESIGNED - P.J.L.
CHECKED - DDB
DRAWN - BRD
CHECKED - DDB
03/31/2011