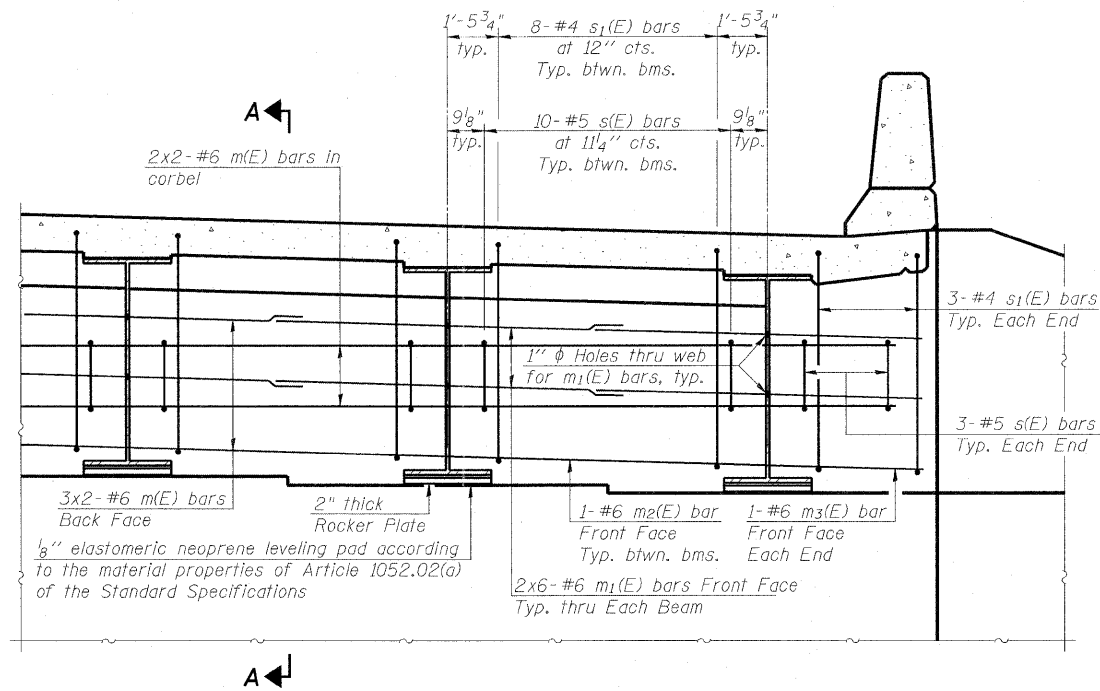


STATE OF ILLINOIS
DEPARTMENT OF TRANSPORTATION



DIAPHRAGM ELEVATION AT ABUTMENT

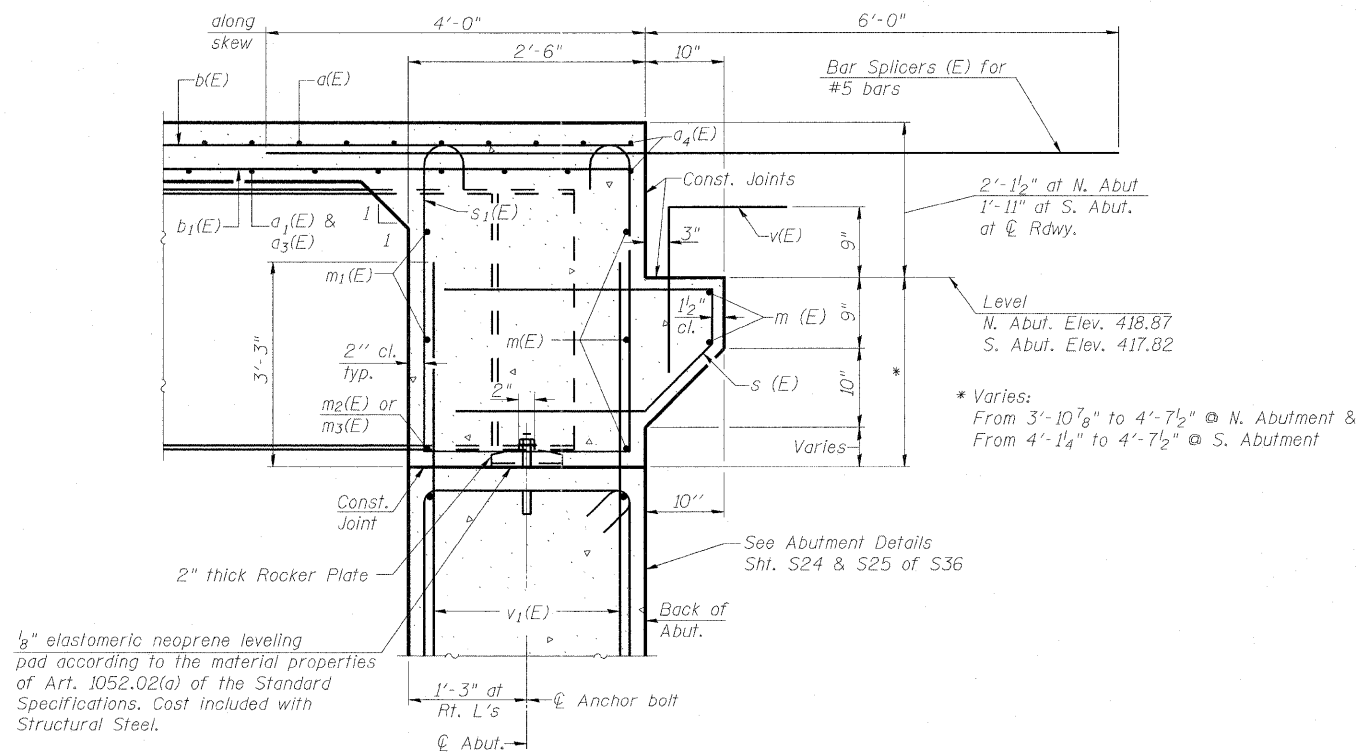
(Bearing Stiffeners not shown)

Notes:

Reinforcement bars in diaphragm are billed with superstructure on sheet S15 of S36.
Concrete in diaphragm is included with Concrete Superstructure on sheet S15 of S36.
For details of bars s(E) & s1(E) see sheet S15 of S36.
The s(E) and s1(E) bars shall be placed parallel to the beams. Spacing for these bars shall be at right angles to the beams.

MINIMUM BAR LAP

(Superstructure)
#4 bar = 2'-7"
#5 bar = 3'-3"
#6 b2(E) & b3(E) = 3'-10"
#6 m-series = 4'-5"
#8 bar = 6'-9"



SECTION A-A

Dimensions at right angles to abutment, except as shown.

See Abutment Details Sht. S24 & S25 of S36 for v1(E) bars.

AECOM

303 East Wacker Drive, Suite 600
Chicago, Illinois 60601
Ph: 312.938.0300
Fax: 312.373.6806
www.aecom.com

DESIGNED	- P.J.L.
CHECKED	- D.D.B.
DRAWN	- B.R.D.
CHECKED	- D.D.B.

03/31/2011

**INTEGRAL ABUTMENT
DIAPHRAGM DETAILS
STRUCTURE NO. 082-0326**

SHEET NO. S14	F.A.I. RTE.	SECTION	COUNTY	TOTAL SHEETS	SHEET NO.
	64	82-1-3HB, 82-2N, 82-1-12RS	ST. CLAIR	352	216
S36 SHEETS	F.A.U. 9166 / F.A.U. 9180		CONTRACT NO. 76C51		
	FED. ROAD DIST. NO.	ILLINOIS FED. AID PROJECT			