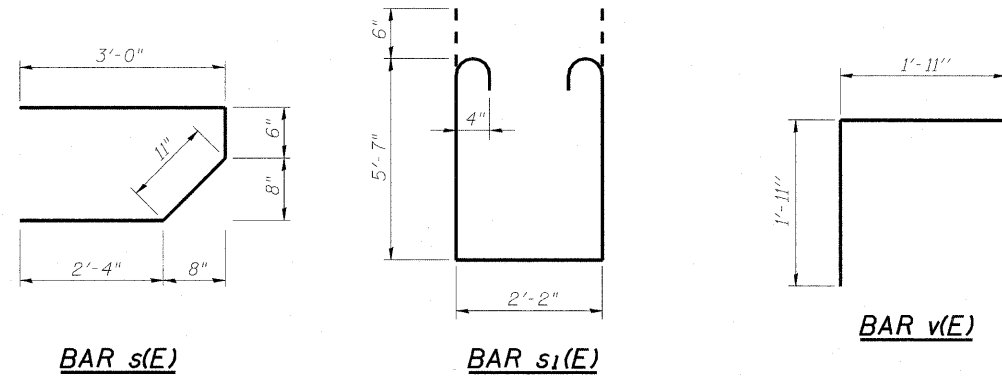
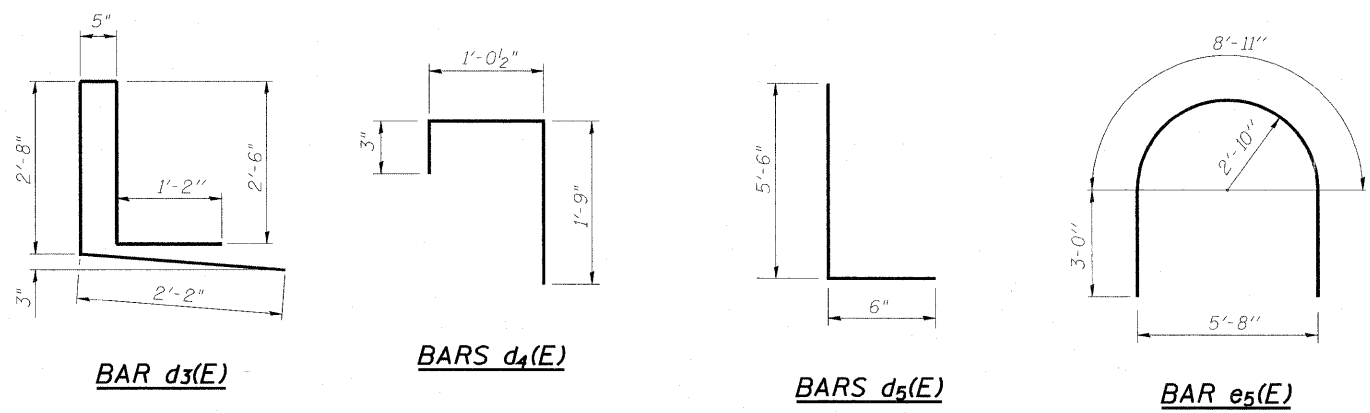
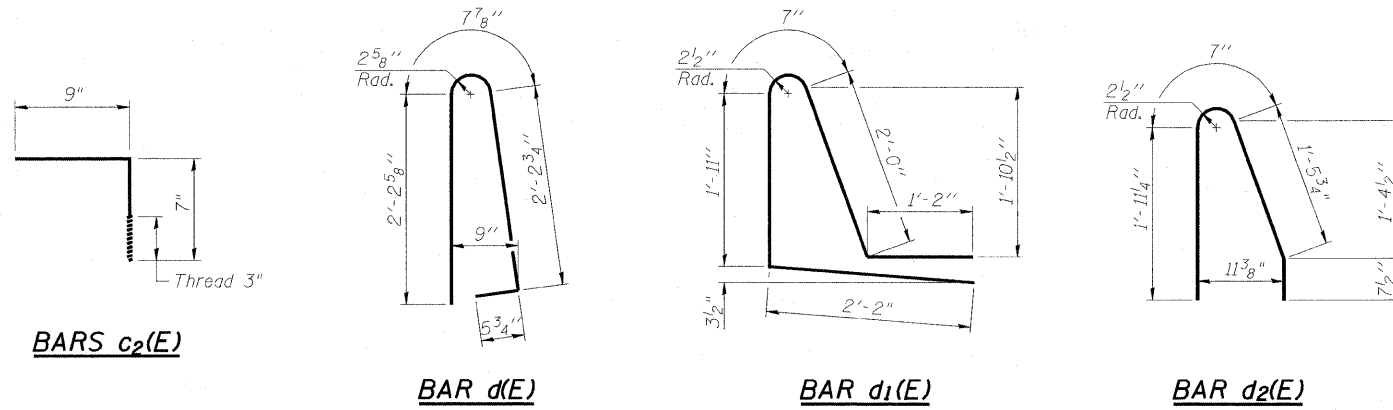


STATE OF ILLINOIS
DEPARTMENT OF TRANSPORTATION



**SUPERSTRUCTURE
BILL OF MATERIAL**

Bar	No.	Size	Length	Shape	
d(E)	1416	#5	29'-10"	U	
a ₁ (E)	505	#5	25'-0"	U	
a ₂ (E)	708	#6	6'-6"	U	
a ₃ (E)	505	#5	34'-8"	U	
a ₄ (E)	8	#5	30'-2"	U	
a ₁₀ (E)	708	#6	15'-6"	U	
b(E)	649	#5	29'-9"	U	
b ₁ (E)	560	#5	32'-5"	U	
b ₂ (E)	56	#6	50'-0"	U	
b ₃ (E)	56	#6	41'-7"	U	
b ₄ (E)	24	#5	38'-2"	U	
b ₅ (E)	12	#5	19'-6"	U	
b ₆ (E)	18	#5	39'-4"	U	
c ₁ (E)	295	#5	5'-6"	U	
c ₂ (E)	590	#5	1'-4"	U	
d(E)	777	#5	5'-7"	U	
d ₁ (E)	389	#5	7'-10"	U	
d ₂ (E)	388	#5	4'-7 1/2"	U	
d ₃ (E)	388	#5	8'-11"	U	
d ₄ (E)	40	#4	3'-1"	U	
d ₅ (E)	20	#5	6'-0"	U	
e(E)	70	#4	14'-8"	U	
e ₁ (E)	147	#4	17'-8"	U	
e ₂ (E)	21	#4	16'-11"	U	
e ₃ (E)	28	#4	16'-8"	U	
e ₄ (E)	29	#4	5'-8"	U	
e ₅ (E)	6	#5	14'-11"	U	
e ₆ (E)	21	#4	17'-5"	U	
e ₇ (E)	105	#4	18'-6"	U	
e ₈ (E)	14	#4	15'-0"	U	
e ₉ (E)	3	#8	29'-8"	U	
e ₁₀ (E)	8	#8	40'-10"	U	
e ₁₁ (E)	2	#8	19'-8"	U	
e ₁₂ (E)	6	#8	41'-8"	U	
e ₁₃ (E)	2	#8	16'-8"	U	
e ₁₄ (E)	1	#8	5'-8"	U	
e ₁₅ (E)	1	#8	30'-5"	U	
e ₁₆ (E)	3	#4	29'-8"	U	
e ₁₇ (E)	8	#4	37'-8"	U	
e ₁₈ (E)	2	#4	19'-8"	U	
e ₁₉ (E)	6	#4	38'-11"	U	
e ₂₀ (E)	2	#4	16'-8"	U	
e ₂₁ (E)	1	#4	30'-5"	U	
e ₂₂ (E)	7	#4	19'-8"	U	
s(E)	112	#5	6'-9"	U	
s ₁ (E)	92	#4	14'-4"	U	
m(E)	20	#6	30'-10"	U	
m ₁ (E)	24	#6	13'-3"	U	
m ₂ (E)	10	#6	9'-7"	U	
m ₃ (E)	4	#6	3'-3"	U	
v(E)	114	#5	3'-10"	U	
Reinforcement Bars, Epoxy Coated				Pound	175,010
Concrete Superstructure				Cu. Yds.	643.7
Bridge Deck Grooving				Sq. Yd.	1,304
Protective Coat				Sq. Yd.	2,728

Bars indicated thus 1 x 4 - #8 etc. indicates 1 line of bars with 4 lengths per line.

** Bill of Material this sheet includes the following Approach Slab items: Parapet Reinforcement, Parapet Concrete, Bridge Deck Grooving and Protective Coat.

PARAPET HORIZONTAL REINFORCEMENT

(See Parapet Elevations and Sections)

Designation	Description per Panel	Number of Panels		
		Stidewalk	E. Roadway	W. Roadway
* ①	7 - #4 e(E) bars	4	4	2
②	7 - #4 e ₁ (E) bars	7	7	7
③	7 - #4 e ₂ (E) bars	1	1	1
④	7 - #4 e ₃ (E) bars	2	--	2
⑤	See Detail E and Detail F Sht. S12 of S36	1	--	1
⑥	7 - #4 e ₆ (E) bars	1	1	1
⑦	7 - #4 e ₇ (E) bars	5	5	5
* ⑧	7 - #4 e ₈ (E) bars	--	--	2
* ⑨	1 - #8 e ₉ (E) bars Front Face	--	2	1
⑩	1x4 - #8 e ₁₀ (E) bars Front Face	--	1	1
⑪	1 - #8 e ₁₁ (E) bars Front Face	--	2	--
⑫	1x3 - #8 e ₁₂ (E) bars Front Face	--	1	1
⑬	1 - #8 e ₁₃ (E) bars Front Face	--	--	2
⑭	1 - #8 e ₁₄ (E) bars Front Face	--	--	1
* ⑮	1 - #8 e ₁₅ (E) bars Front Face	--	--	1
* ⑯	1 - #4 e ₁₆ (E) bars Back Face	--	2	1
⑰	1x4 - #4 e ₁₇ (E) bars Back Face	--	1	1
⑱	1 - #4 e ₁₈ (E) bars Back Face	--	2	--
⑲	1x3 - #4 e ₁₉ (E) bars Back Face	--	1	1
⑳	1 - #4 e ₂₀ (E) bars Back Face	--	--	2
* ㉑	1 - #4 e ₂₁ (E) bars Back Face	--	--	1
㉒	7 - #4 e ₂₂ (E) bars	--	2	--

* Rebar in Approach Slab Parapets.

AECOM

303 East Wacker Drive, Suite 600
Chicago, Illinois 60601
Ph: 312.938.0300
Fax: 312.373.6806
www.aecom.com

DESIGNED	- P.J.L.
CHECKED	- D.D.B.
DRAWN	- B.R.D.
CHECKED	- D.D.B.

03/31/2011

**SUPERSTRUCTURE REINFORCEMENT
& MATERIALS SCHEDULES
STRUCTURE NO. 082-0326**

SHEET NO. S15	F.A.I. RTE.	SECTION	COUNTY	TOTAL SHEETS	SHEET NO.
	64	82-1-3HB, 82-2N, 82-1-12RS	ST. CLAIR	352	217
S36 SHEETS	F.A.U. 9166 / F.A.U. 9180		CONTRACT NO. 76C51		
FED. ROAD DIST. NO.		ILLINOIS FED. AID PROJECT			