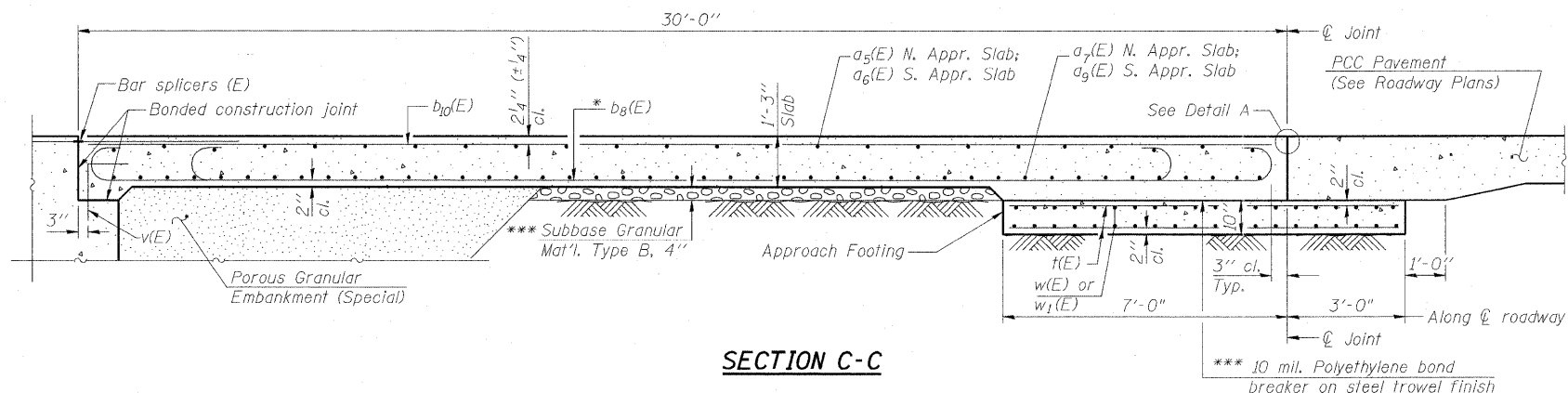


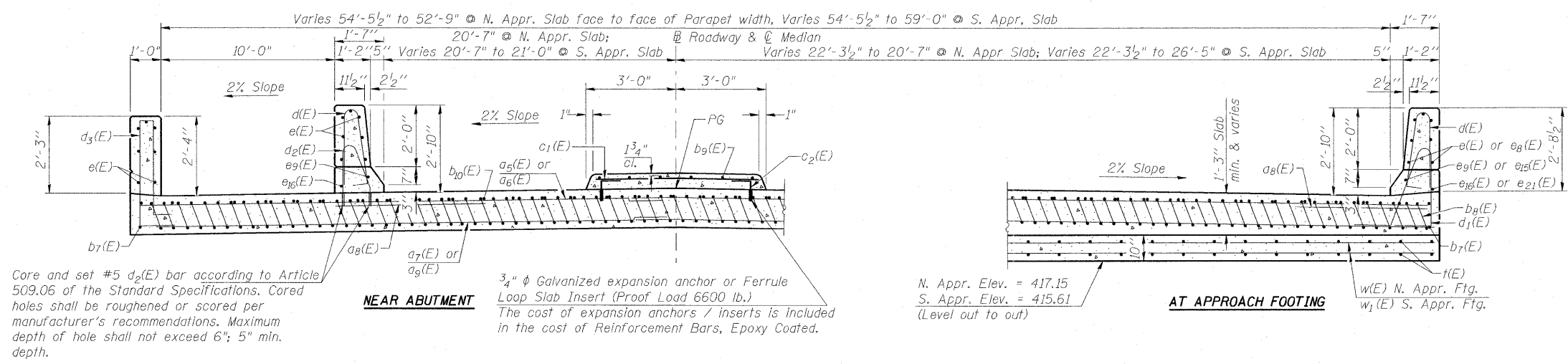
STATE OF ILLINOIS
DEPARTMENT OF TRANSPORTATION

Notes:
See sheet S16 of S36 for Detail A and View B-B.
Approach slab and parapet concrete shall be paid for as Concrete Superstructure.
Approach footing concrete shall be paid for as Concrete Structures.
Reinforcement shall be paid for as Reinforcement Bars, Epoxy Coated.
For v(E) bar details, see sheet S14 of S36.
The approach footing maximum applied service bearing pressure (Qmax) = 2.0 ksf.
For bar splicer details, see sheet S28 of S36.
Cost of excavation for approach footing included with Concrete Structures.
For Porous Granular Embankment (Special) and drainage treatment details, see sheet S2 of S36.
For additional parapet details, see sheet S11 of S36.



SECTION C-C

* Tilt #9 b8(E) bars as required to maintain clearance.
*** Cost included with Concrete Superstructure.



SECTION D-D

(See Plan for dimensions not shown)

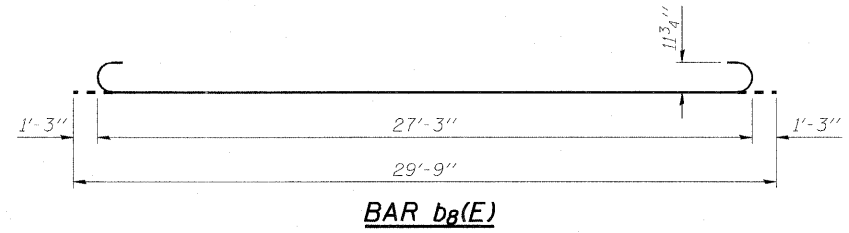
TWO APPROACHES
BILL OF MATERIAL

Bar	No.		Size	Length	Shape
	N. Appr.	S. Appr.			
a5(E)	50	--	#4	29'-11"	—
a6(E)	--	50	#4	32'-3"	—
a7(E)	92	--	#5	30'-3"	—
a8(E)	48	48	#6	6'-6"	—
a9(E)	--	92	#5	32'-7"	—
b7(E)	2	2	#4	29'-8"	—
b8(E)	131	141	#9	29'-9"	—
b9(E)	6	6	#5	29'-8"	—
b10(E)	44	48	#4	29'-8"	—
c1(E)	30	30	#5	5'-6"	—
c2(E)	60	60	#5	1'-4"	—
f(E)	112	126	#4	9'-9"	—
w(E)	80	--	#5	30'-3"	—
w1(E)	--	80	#5	32'-7"	—
** Concrete Superstructure			Cu. Yd.	178.1	
** Concrete Structures			Cu. Yd.	36.6	
** Reinforcement Bars, Epoxy Coated			Pound	46,130	

** See Sht. S15 of S36 for Parapet Reinforcement, Parapet Concrete, Bridge Deck Grooving and Protective Coat quantities.
See Sht. S15 of S36 for c2(E) bar Detail

AECOM
303 East Wacker Drive, Suite 600
Chicago, Illinois 60601
Ph: 312.938.0300
Fax: 312.373.6806
www.aecom.com

DESIGNED	- P.J.L.
CHECKED	- D.D.B.
DRAWN	- B.R.D.
CHECKED	- D.D.B.
03/31/2011	



BRIDGE APPROACH SLAB DETAILS - II
STRUCTURE NO. 082-0326

SHEET NO. S17	F.A.I. RTE.	SECTION	COUNTY	TOTAL SHEETS	SHEET NO.
	64	82-1-3HB, 82-2N, 82-1-12RS	ST. CLAIR	352	219
S36 SHEETS	F.A.U. 9166 / F.A.U. 9180		CONTRACT NO. 76C51		
	FED. ROAD DIST. NO.	ILLINOIS	FED. AID PROJECT		