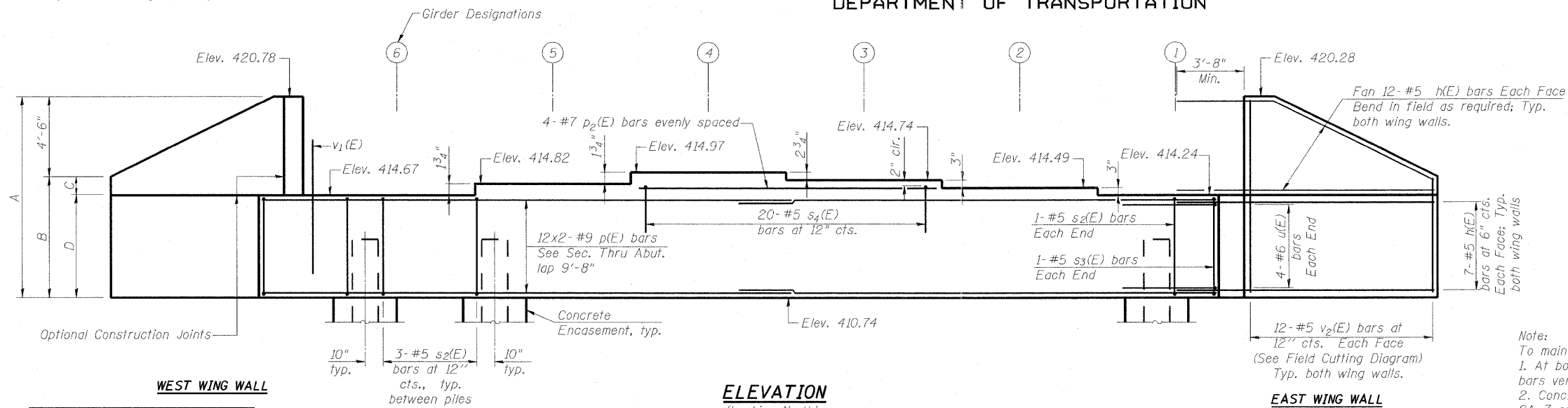
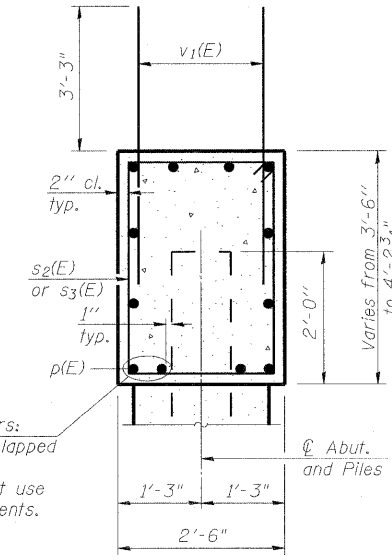


STATE OF ILLINOIS  
DEPARTMENT OF TRANSPORTATION

Notes:  
Four steps monolithically with cap.



**ELEVATION**  
(Looking North)

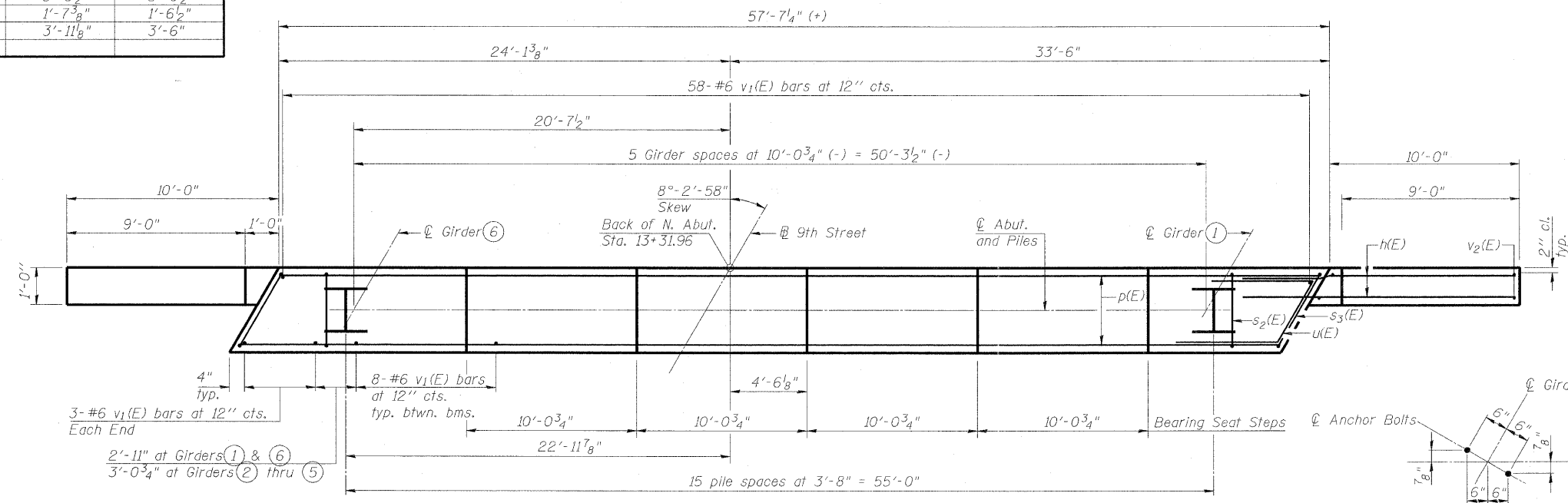


**SEC. THRU ABUT.**

Note:  
To maintain clearance between bars:  
1. At bottom p(E) bar laps, stack lapped bars vertically.  
2. Concrete Class SI mix shall not use CA-7 coarse aggregate for abutments.

**Wing Wall Dimensions**

	West Wing Wall	East Wing Wall
A	10'-0 1/2"	9'-6 1/2"
B	5'-6 1/2"	5'-0 1/2"
C	1'-7 3/8"	1'-6 1/2"
D	3'-11 1/8"	3'-6"



**PLAN**

**ANCHOR BOLT LAYOUT**  
Space Reinforcement to miss Anchor Bolts

**PILE DATA**

Type: Steel HP 14x89  
Nominal Required Bearing: 372 kips  
Factored Resistance Available: 186 kips  
Est. Length: 91 ft.  
No. Production Piles: 15  
No. Test Piles: 1

**BILL OF MATERIAL**

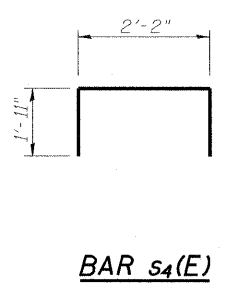
Bar	No.	Size	Length	Shape
h(E)	76	#5	13'-8"	—
p(E)	24	#9	33'-6"	—
p2(E)	4	#7	19'-9"	—
s2(E)	47	#5	11'-7"	□
s3(E)	2	#5	11'-8"	□
s4(E)	20	#5	6'-0"	□
u(E)	8	#6	10'-11"	└
v1(E)	104	#6	6'-6"	—
v2(E)	24	#5	13'-10"	—
Structure Excavation			Cu. Yd.	285
Concrete Structures			Cu. Yd.	26.7
Reinforcement Bars, Epoxy Coated			Pound	6,190
Furnishing - Stool Piles, HP 14x89			Foot	1,365
Driving Piles			Foot	1,365
Test Pile, HP 14x89			Each	1
Concrete Encasement			Cu. Yd.	8.7
Pile Shoes			Each	16

For details of Bar Splicers, see Sht. S28 of S36.  
For details of piles and Concrete Encasement, see Sht. S27 of S36.

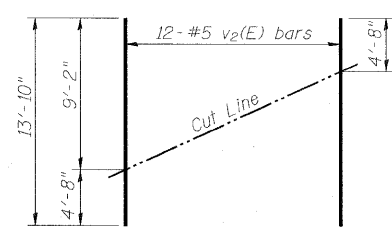
**AECOM**  
303 East Wacker Drive, Suite 600  
Chicago, Illinois 60601  
Ph: 312.938.0300  
Fax: 312.373.6806  
www.aecom.com

DESIGNED	- P.J.L.
CHECKED	- D.D.B.
DRAWN	- B.R.D.
CHECKED	- D.D.B.

03/31/2011

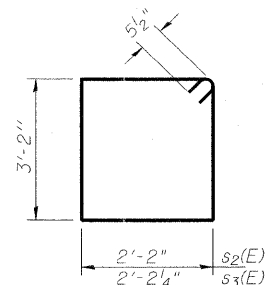


**BAR s4(E)**

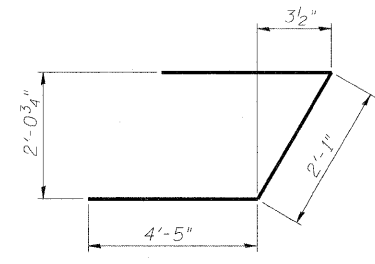


**FIELD CUTTING DIAGRAM**

Order v2(E) full length. Cut as shown and use remainder of bars in opposite face.



**BARS s2(E) & s3(E)**



**BAR u(E)**

**NORTH ABUTMENT  
STRUCTURE NO. 082-0326**

SHEET NO. S24	F.A.I. RTE.	SECTION	COUNTY	TOTAL SHEETS	SHEET NO.
	64	82-1-3HB, 82-2N, 82-1-12RS	ST. CLAIR	352	226
S36 SHEETS	F.A.U. 9166 / F.A.U. 9180		CONTRACT NO. 76C51		
	FED. ROAD DIST. NO.	ILLINOIS FED. AID PROJECT			