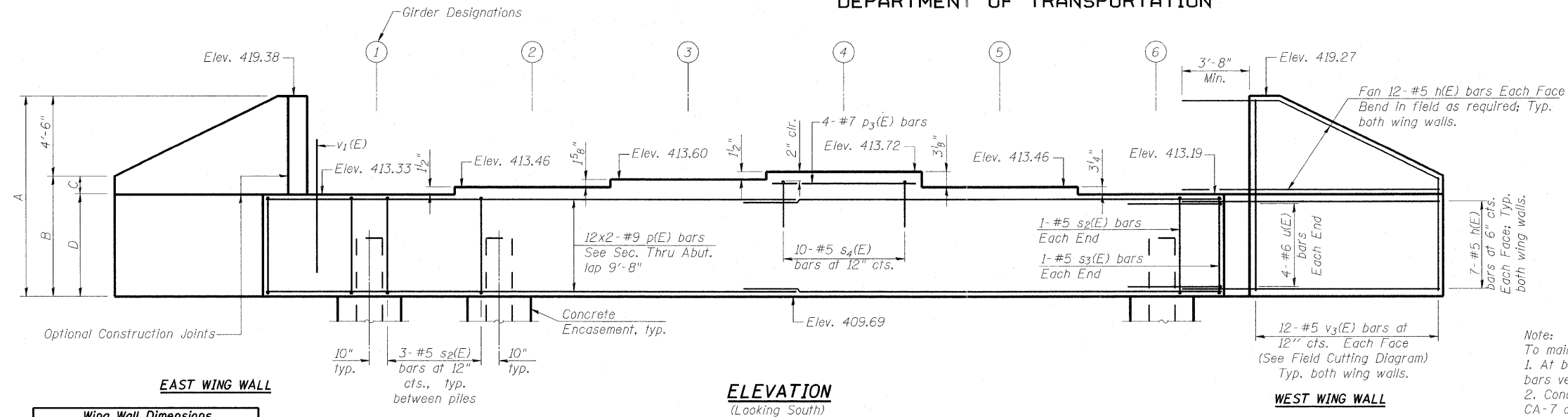
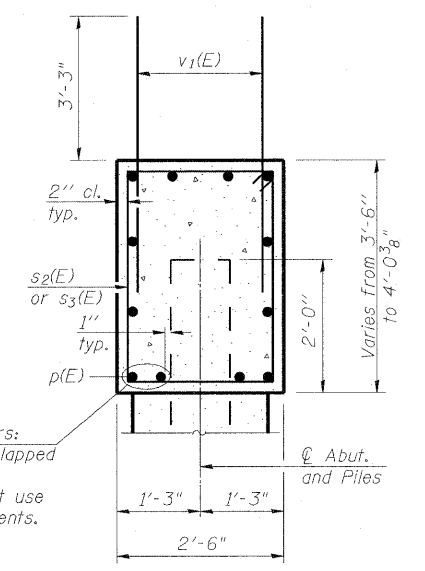


Notes:
Four steps monolithically with cap.

STATE OF ILLINOIS
DEPARTMENT OF TRANSPORTATION



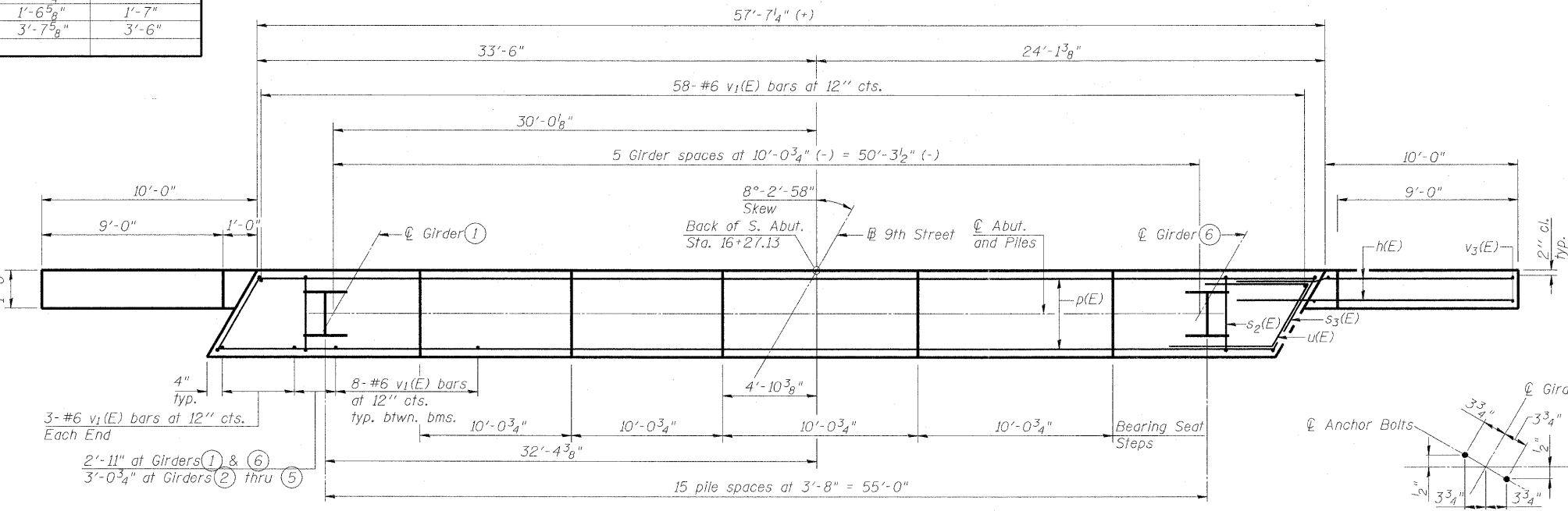
Note:
To maintain clearance between bars:
1. At bottom p(E) bar laps, stack lapped bars vertically.
2. Concrete Class SI mix shall not use CA-7 coarse aggregate for abutments.



SEC. THRU ABUT.

Wing Wall Dimensions

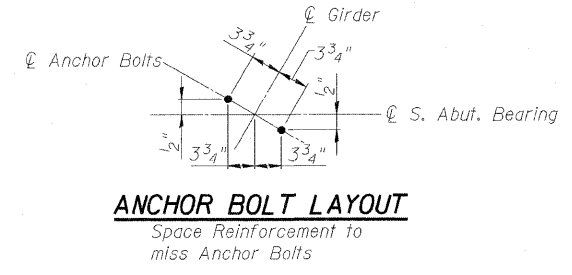
	East Wing Wall	West Wing Wall
A	9'-8 1/4"	9'-7"
B	5'-2 1/4"	5'-1"
C	1'-6 3/8"	1'-7"
D	3'-7 5/8"	3'-6"



PILE DATA

Type: Steel HP 14x89
Nominal Required Bearing: 312 kips
Factored Resistance Available: 156 kips
Est. Length: 75 ft.
No. Production Piles: 16

PLAN



ANCHOR BOLT LAYOUT

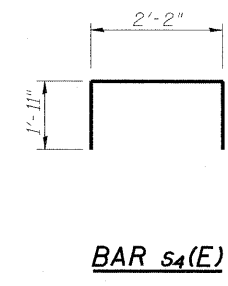
BILL OF MATERIAL

Bar	No.	Size	Length	Shape
h(E)	76	#5	13'-8"	—
p(E)	24	#9	33'-6"	—
p3(E)	4	#7	9'-8"	—
s2(E)	47	#5	11'-7"	□
s3(E)	2	#5	11'-8"	□
s4(E)	10	#5	6'-0"	□
u(E)	8	#6	10'-11"	┌
v1(E)	104	#6	6'-6"	—
v3(E)	24	#5	14'-0"	—
Structure Excavation		Cu. Yd.	278	
Concrete Structures		Cu. Yd.	25.8	
Reinforcement Bars, Epoxy Coated		Pound	6,050	
Furnishing - Steel Piles, HP 14x89		Foot	1,200	
Driving Piles		Foot	1,200	
Concrete Encasement		Cu. Yd.	8.7	
Pile Shoes		Each	16	

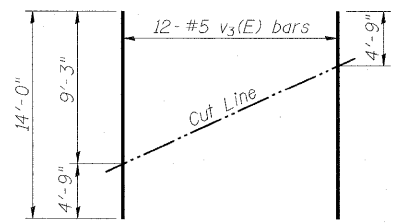
For details of Bar Splicers, see Sht. S28 of S36.
For details of piles and Concrete Encasement, see Sht. S27 of S36.

AECOM
303 East Wacker Drive, Suite 600
Chicago, Illinois 60601
Ph: 312.938.0300
Fax: 312.373.6806
www.aecom.com

DESIGNED - P.J.L.
CHECKED - D.D.B.
DRAWN - B.R.D.
CHECKED - D.D.B.
03/31/2011

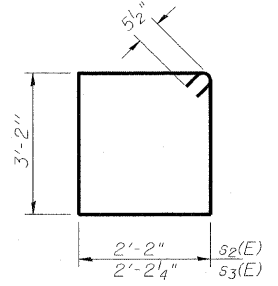


BAR s4(E)

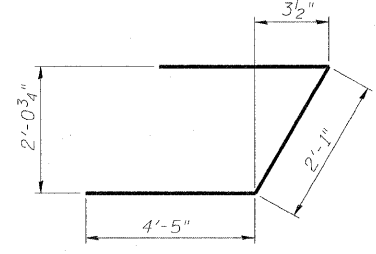


FIELD CUTTING DIAGRAM

Order v3(E) full length. Cut as shown and use remainder of bars in opposite face.



BARS s2(E) & s3(E)



BAR u(E)

SOUTH ABUTMENT
STRUCTURE NO. 082-0326

SHEET NO. S25	F.A.I. RTE.	SECTION	COUNTY	TOTAL SHEETS	SHEET NO.
64	82-1-3HB, 82-2N, 82-1-12RS	ST. CLAIR	352	227	
S36 SHEETS	F.A.U. 9166 / F.A.U. 9180	CONTRACT NO. 76C51			
	FED. ROAD DIST. NO.	ILLINOIS FED. AID PROJECT			