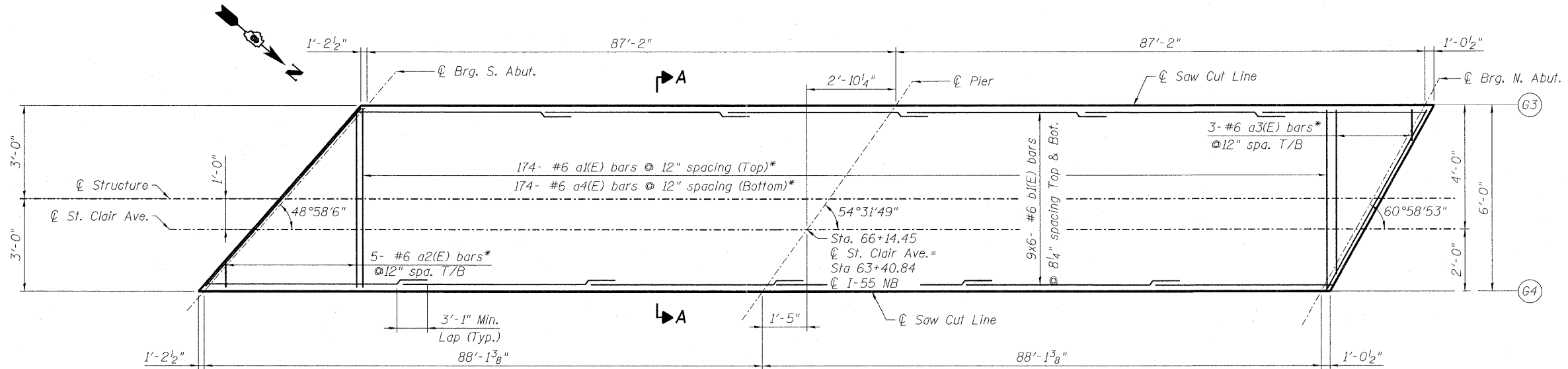
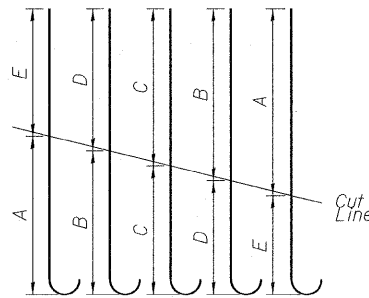


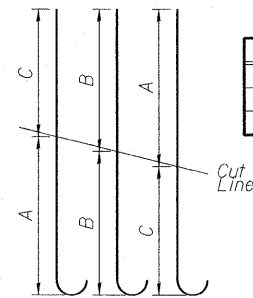
STATE OF ILLINOIS
DEPARTMENT OF TRANSPORTATION



* Spacing of bars to match existing bar spacing

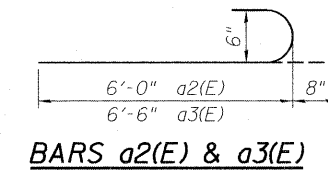
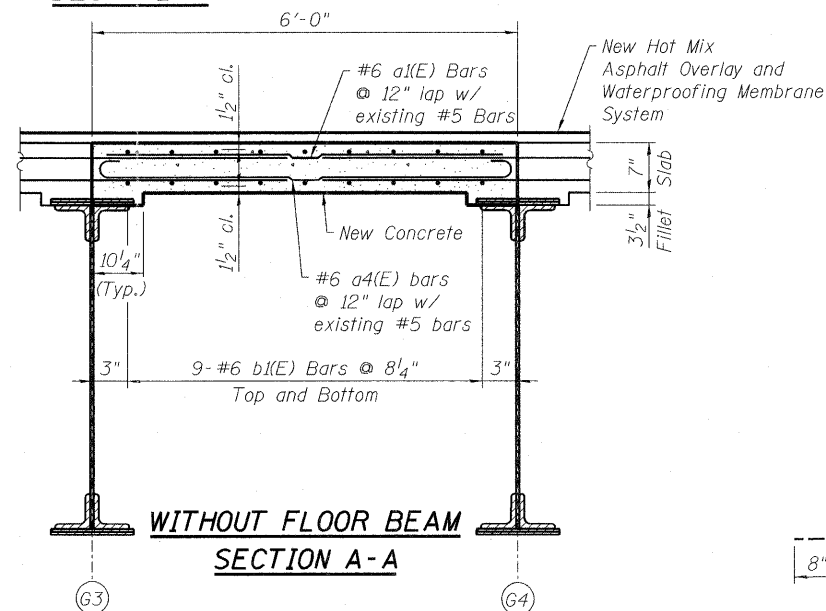


Segment	Length
A	5'-2"
B	4'-1"
C	3'-0"
D	1'-11"
E	10"



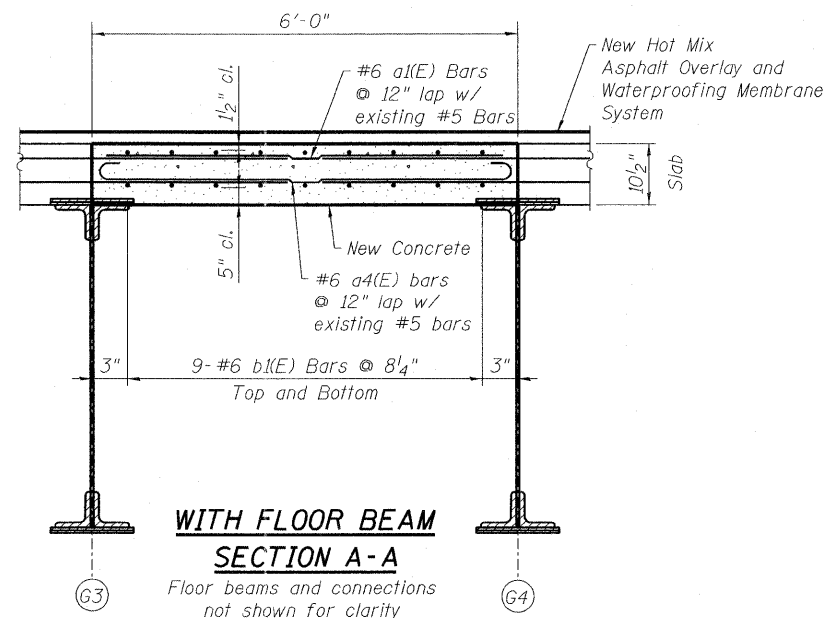
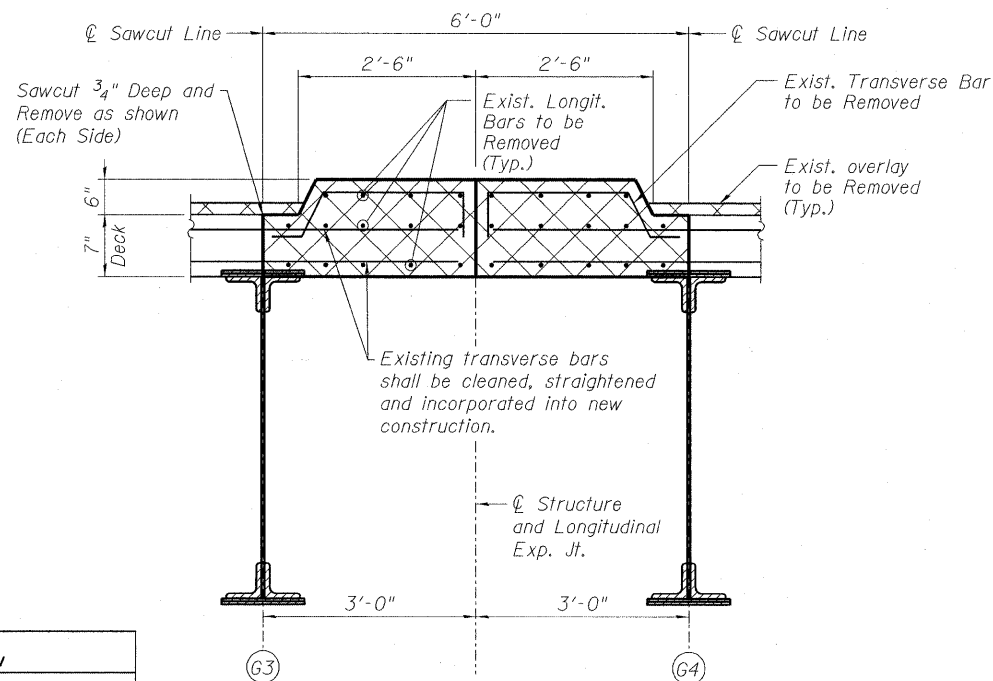
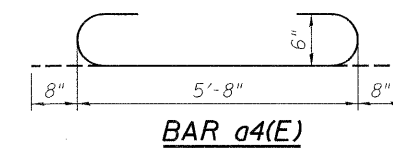
Segment	Length
A	5'-0"
B	3'-3"
C	1'-6"

DECK PLAN



BILL OF MATERIAL

Bar	No.	Size	Length	Shape
a1(E)	174	#6	5'-8"	—
a2(E)	5	#6	6'-8"	—
a3(E)	3	#6	7'-2"	—
a4(E)	174	#6	7'-0"	—
b1(E)	108	#6	31'-4"	—
Item		Unit	Quantity	
Reinforcement Bars, Epoxy Coated		Pound	8,560	
Concrete Removal		Cu. Yd.	48	
Concrete Superstructure		Cu. Yd.	28	



NOTES:

- Notation '9 x 6 bars' refers to 9 rows of bars with 6 lengths per row.
- Order a2(E) and a3(E) bars full length and cut as shown. Hook segment of a2(E) and a3(E) bars shall be used as bottom mat reinforcement with hook end placed over longitudinal beam G3 or G4. Non-hooked segments of a2(E) and a3(E) bars shall be used as top mat of reinforcement.

**DECK REPAIR DETAILS
STRUCTURE NO. 082-0099**

DESIGNED - DEV
CHECKED - EJO
DRAWN - DEV
CHECKED - EJO

SHEET NO.	F.A.I. RTE.	SECTION	COUNTY	TOTAL SHEETS	SHEET NO.
S5	64	82-1-3HB, 82-2N, 82-1-12RS	ST. CLAIR	352	243
S20 SHEETS	F.A.U. 9166 / F.A.U. 9180		CONTRACT NO. 76C51		
FED. ROAD DIST. NO.		ILLINOIS	FED. AID PROJECT		