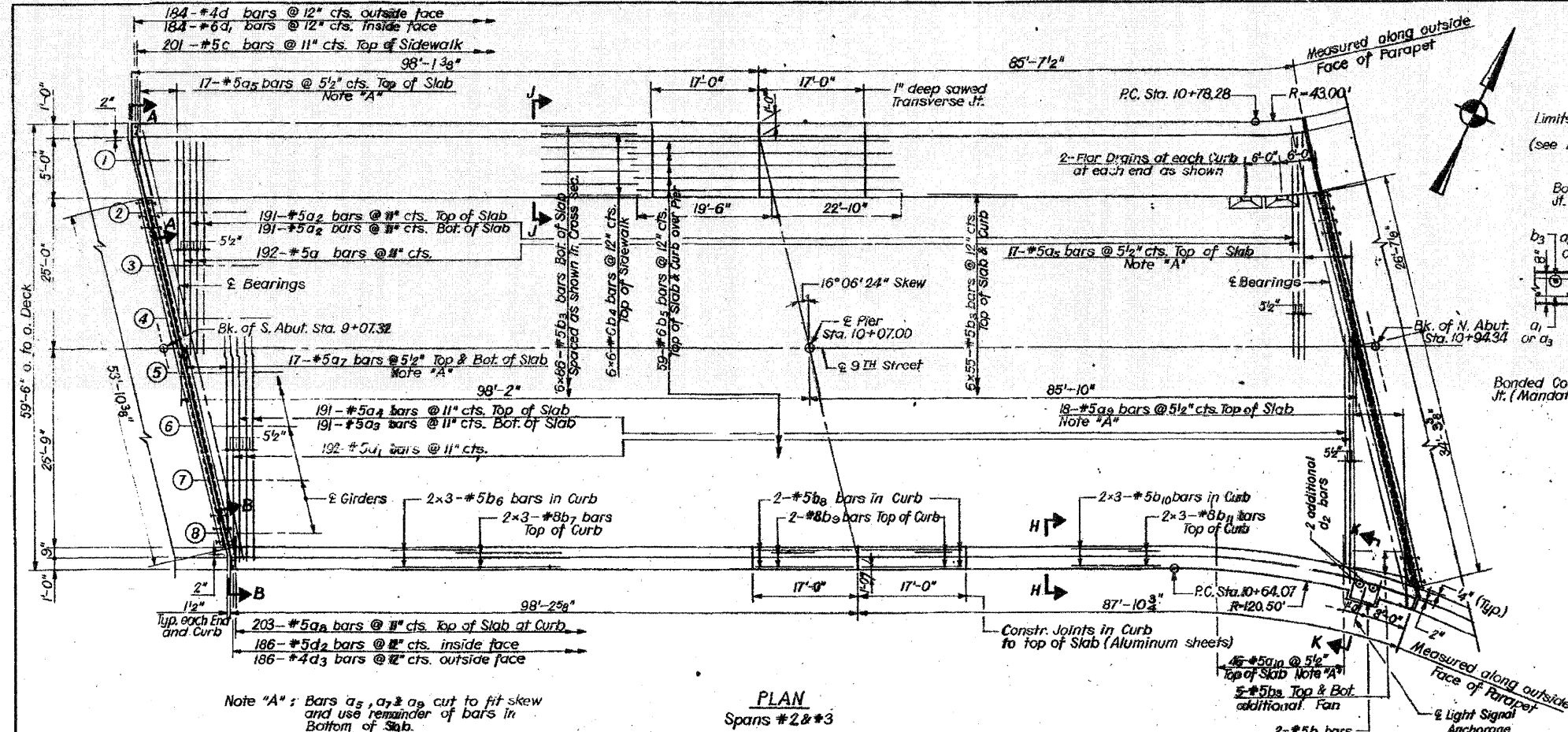


FOR INFORMATION ONLY

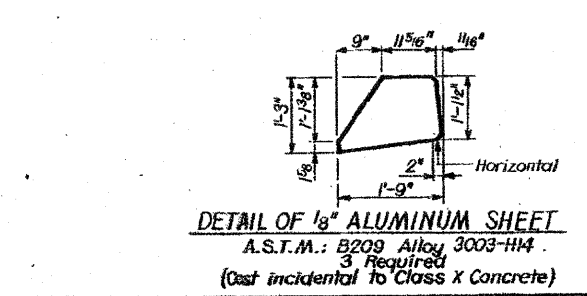
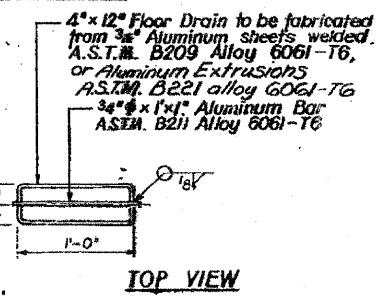
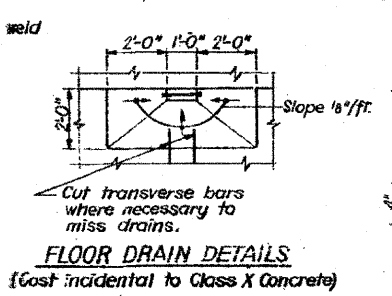
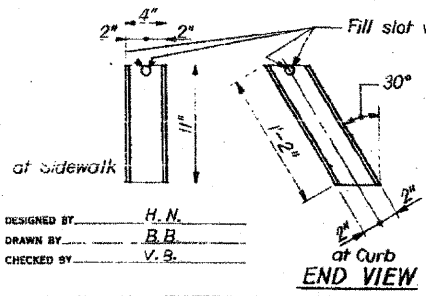
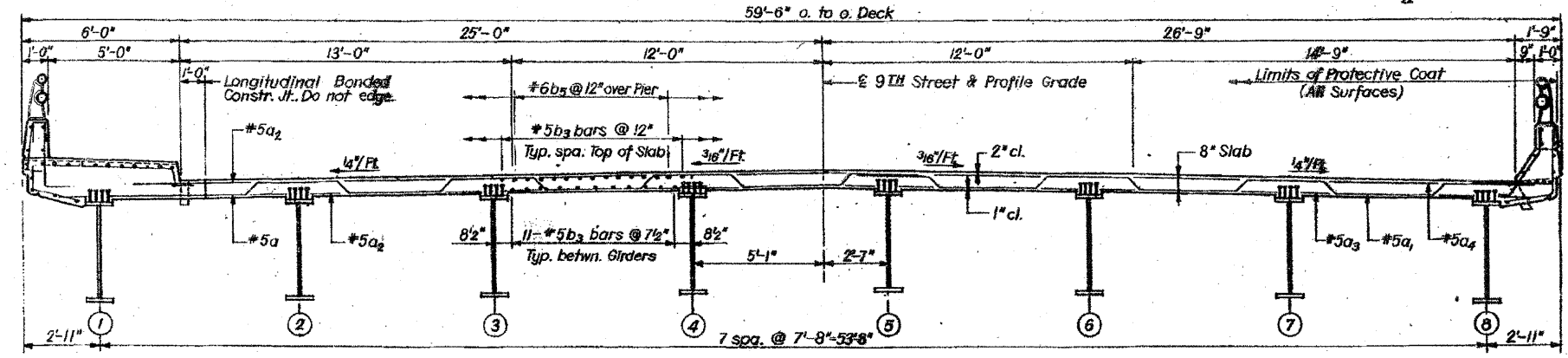
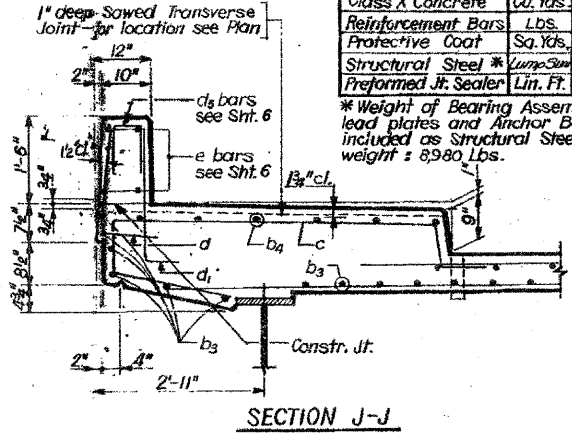
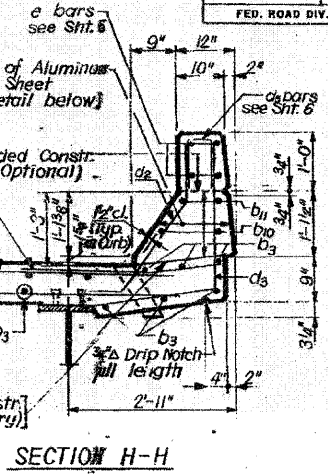


ROUTE NO.	SECTION	COUNTY	TOTAL SHEETS	SHEET NO.
F.A.I. - 64	82-1HB	ST. CLAIR	110	60
FED. ROAD DIV. NO. 4		ILLINOIS PROJECT		

**BILL OF MATERIAL**

Bar	No.	Size	Length	Shape
a	192	#5	33-10	~
a <sub>1</sub>	192	#5	26-10	~
a <sub>2</sub>	382	#5	25-7	~
a <sub>3</sub>	191	#5	33-2	~
a <sub>4</sub>	191	#5	29-5	~
a <sub>5</sub>	34	#5	31-4	~
a <sub>6</sub>	17	#5	32-2	~
a <sub>7</sub>	203	#6	4-0	~
a <sub>8</sub>	16	#5	38-2	~
a <sub>9</sub>	46	#5	8-6	~
a <sub>10</sub>	2	#5	4-7	~
a <sub>11</sub>	856	#5	31-5	~
a <sub>12</sub>	36	#6	31-8	~
a <sub>13</sub>	59	#6	42-4	~
a <sub>14</sub>	6	#5	27-10	~
a <sub>15</sub>	6	#8	28-5	~
a <sub>16</sub>	4	#5	16-9	~
a <sub>17</sub>	4	#8	16-9	~
a <sub>18</sub>	6	#5	24-5	~
a <sub>19</sub>	6	#8	25-0	~
c	201	#5	10-4	~
d	184	#4	2-6	~
d <sub>1</sub>	184	#6	3-4	~
d <sub>2</sub>	188	#5	3-5	~
d <sub>3</sub>	186	#4	4-7	~
Class X Concrete			Cu. Yds.	320.2
Reinforcement Bars			Lbs.	78,410
Protective Coat			Sq. Yds.	1299
Structural Steel			Lbs.	1
Preformed Jt. Sealer			Lin. Ft.	130

\*Weight of Bearing Assemblies with lead plates and Anchor Bolts is included as Structural Steel, weight = 8980 Lbs.



**NOTES:**

The quantities of reinforcement bars and concrete in parapets are billed separately on Sht. No. 6 and are not included above.

For Expansion Guard Detail see Sht. No. 4. Weight of Expansion Guards is included with Structural Steel on this Sheet.

All exposed edges shall have 3/4" chamfer.

All clearances shall be 1/2" unless shown otherwise.

Bar laps = 24 dia.

For Sections A-A and B-B see Sht. 2

For Bar Diagrams see Sht. No. 2

Bars indicated thus 2x3-#5b<sub>6</sub> etc. indicate 2 lines of bars with 3 lengths per line.

For Section K-K and Light Signal Anchorage Details see Sht. No. 7A.

STATE OF ILLINOIS  
DIVISION OF HIGHWAYS  
SUPERSTRUCTURE  
SPANS 2 AND 3  
F.A. ROUTE 12 (9TH STREET)  
OVER F.A.I. ROUTE 64  
STATION 55 + 62.20  
F.A.I. RT. 64 ST. CLAIR COUNTY SECTION 82-1HB  
H. W. LOCHNER, INC.  
ENGINEERS  
CHICAGO, ILLINOIS

SHEET  
3 of 18