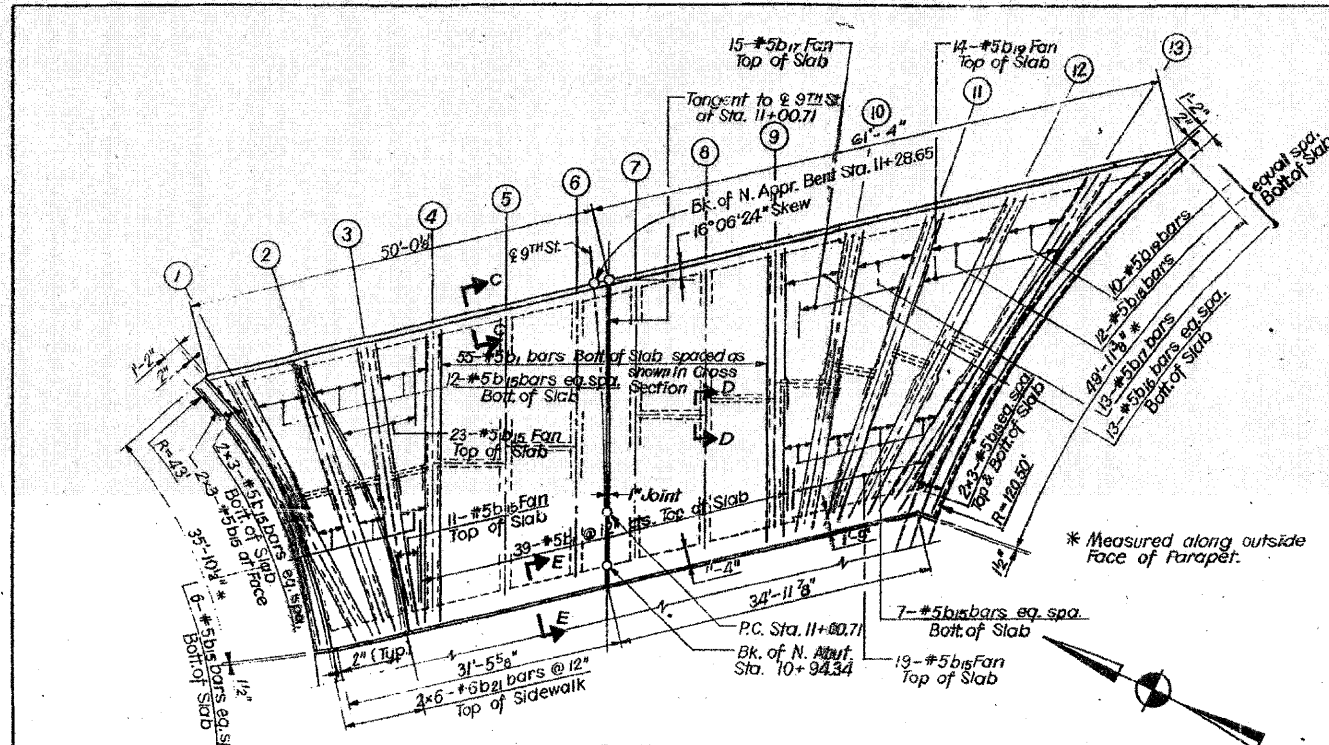


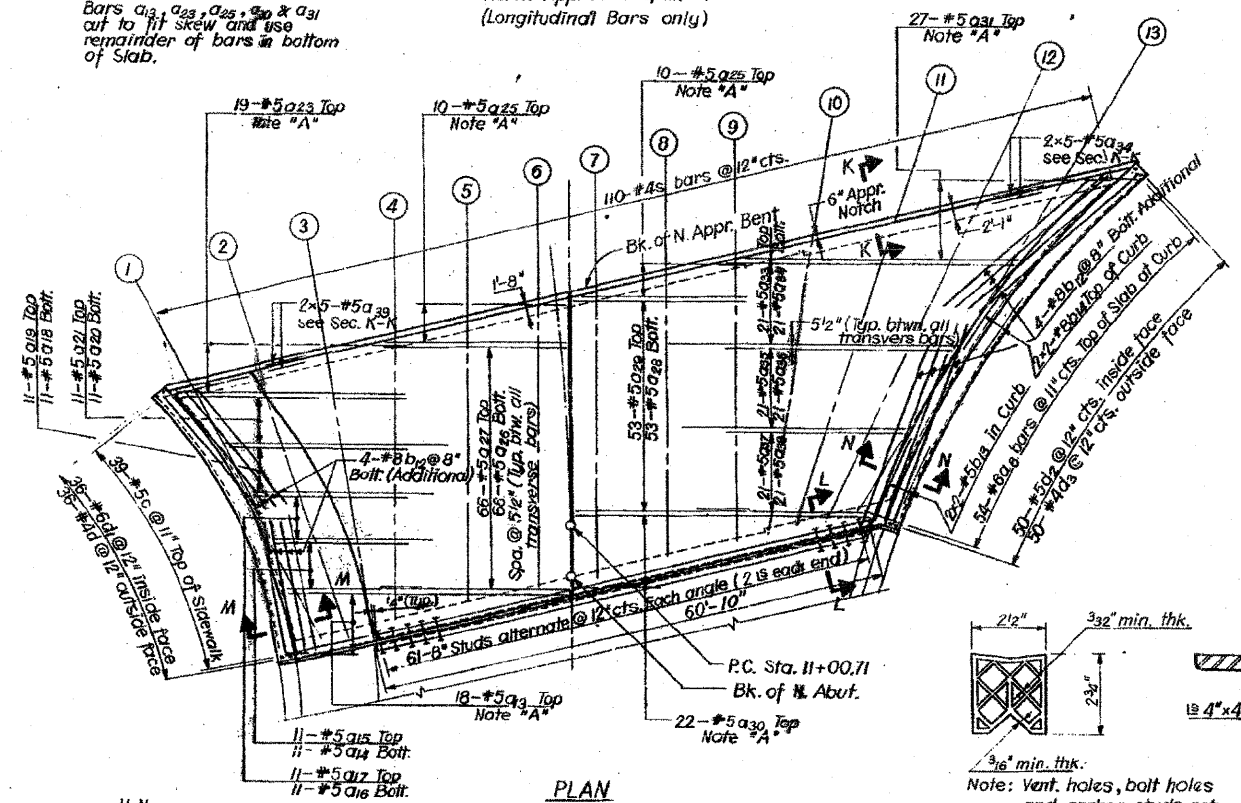
FOR INFORMATION ONLY

ROUTE NO.	SECTION	COUNTY	TOTAL SHEETS	SHEET NO.
FAL-64	82-1HB	ST. CLAIR	110	61
FED. ROAD DIV. NO. 4		ILLINOIS PROJECT		



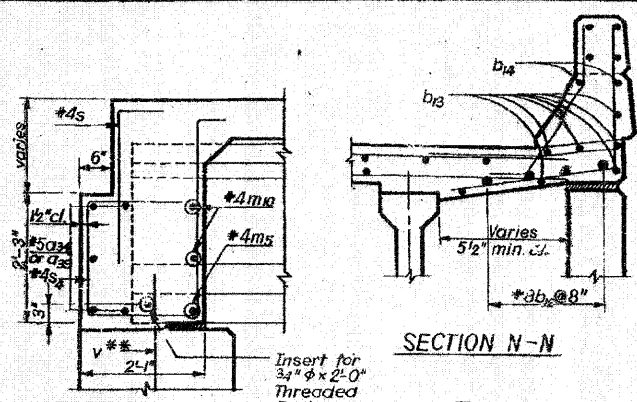
Note "A":  
Bars a<sub>1</sub>, a<sub>2</sub>, a<sub>3</sub>, a<sub>4</sub> & a<sub>5</sub> cut to fit skew and use remainder of bars at bottom of Slab.

PLAN  
North Approach-Span #4  
(Longitudinal Bars only)

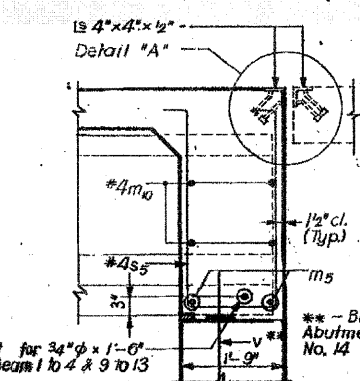


DESIGNED BY: H. N.  
DRAWN BY: B. B.  
CHECKED BY: V. B.

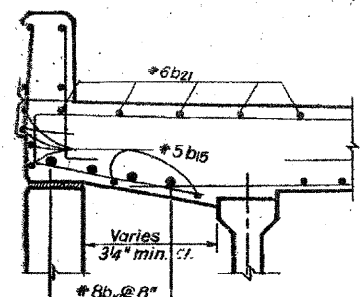
PLAN  
North Approach-Span #4  
(Transverse Bars)



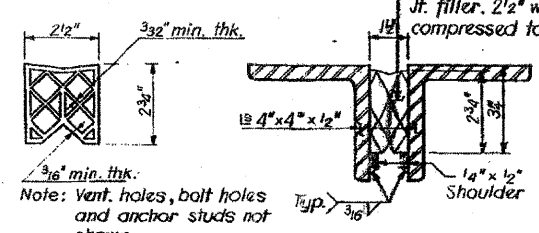
SECTION K-K



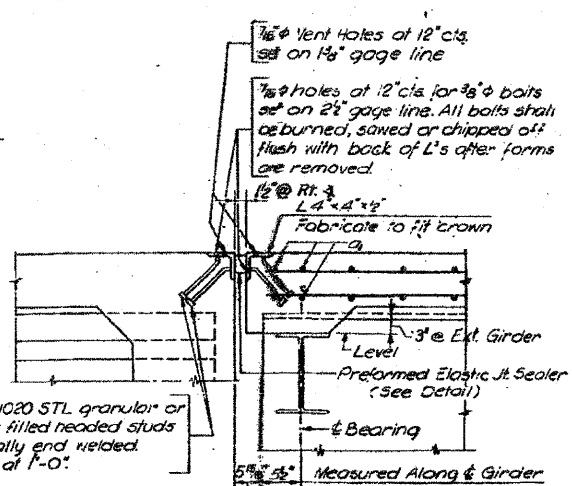
SECTION L-L



SECTION M-M



DETAIL OF PREFORMED ELASTIC JOINT SEALER



DETAIL "A"

BILL OF MATERIAL

Bar	No.	Size	Length	Shape
a <sub>1</sub>	18	#5	31-0	
a <sub>2</sub>	11	#5	15-5	
a <sub>3</sub>	11	#5	16-9	
a <sub>4</sub>	11	#5	18-6	
a <sub>5</sub>	11	#5	19-6	
a <sub>6</sub>	11	#5	23-0	
a <sub>7</sub>	11	#5	23-6	
a <sub>8</sub>	11	#5	28-6	
a <sub>9</sub>	11	#5	29-0	
a <sub>10</sub>	19	#5	32-0	
a <sub>11</sub>	20	#5	17-6	
a <sub>12</sub>	66	#5	19-3	
a <sub>13</sub>	66	#5	15-3	
a <sub>14</sub>	53	#5	18-9	
a <sub>15</sub>	53	#5	14-9	
a <sub>16</sub>	22	#5	32-3	
a <sub>17</sub>	27	#5	37-0	
a <sub>18</sub>	21	#5	34-0	
a <sub>19</sub>	31	#5	31-0	
a <sub>20</sub>	21	#5	28-6	
a <sub>21</sub>	21	#5	24-6	
a <sub>22</sub>	21	#5	23-9	
a <sub>23</sub>	21	#5	19-9	
a <sub>24</sub>	10	#5	26-0	
a <sub>25</sub>	54	#6	4-0	
b <sub>1</sub>	94	#5	35-0	
b <sub>2</sub>	16	#8	18-0	
b <sub>3</sub>	16	#5	25-4	
b <sub>4</sub>	4	#6	25-9	
b <sub>5</sub>	147	#5	18-3	
b <sub>6</sub>	13	#5	19-9	
b <sub>7</sub>	29	#5	22-3	
b <sub>8</sub>	12	#5	25-6	
b <sub>9</sub>	24	#5	29-0	
b <sub>10</sub>	12	#6	18-6	
c	39	#5	10-4	
d	36	#4	2-6	
e	36	#6	3-4	
f	50	#5	3-5	
g	50	#7	4-7	
m <sub>1</sub>	6	#4	4-10	
m <sub>2</sub>	6	#4	4-0	
m <sub>3</sub>	27	#4	7-2	
m <sub>4</sub>	6	#4	6-6	
m <sub>5</sub>	8	#4	4-0	
m <sub>6</sub>	26	#4	3-0	
m <sub>7</sub>	18	#4	2-0	
m <sub>8</sub>	38	#4	7-8	
m <sub>9</sub>	6	#4	1-9	
s	110	#4	3-6	
s <sub>1</sub>	71	#4	8-5	
s <sub>2</sub>	59	#4	6-10	
s <sub>3</sub>	47	#4	8-5	
s <sub>4</sub>	27	#4	9-3	
s <sub>5</sub>	9	#4	8-10	
Class X Concrete				Cu. Yds. 116.8
Reinforcement Bars				Lbs. 26,940
Protective Coat				Sq. Yds. 350

Notes:  
The quantities of reinforcement bars and concrete in parapets and end posts are billed separately on Shit. No. 6 and are not included above.  
All exposed edges shall have 3/4" chamfer  
All clearance shall be 1/2" unless shown otherwise.  
The weight of Exp. Guards is included with structural steel on Sheet No. 5.  
For Sidewalk and Curb Details see Sh. 2.  
For Section C-C, D-D & E-E see Sh. 2.  
For Bar Diagrams see Sh. 2.  
For Cross Sections see Sh. 5.  
Work this sheet in conjunction with Sh. 5

STATE OF ILLINOIS  
DIVISION OF HIGHWAYS  
SUPERSTRUCTURE  
SPAN 4  
F. A. ROUTE 12 (9TH STREET)  
OVER F. A. ROUTE 64  
STATION 55 + 62.20  
F. A. RT. 64 ST. CLAIR COUNTY SECTION 82-1HB  
H. W. LOCHNER, INC.  
ENGINEERS  
CHICAGO, ILLINOIS