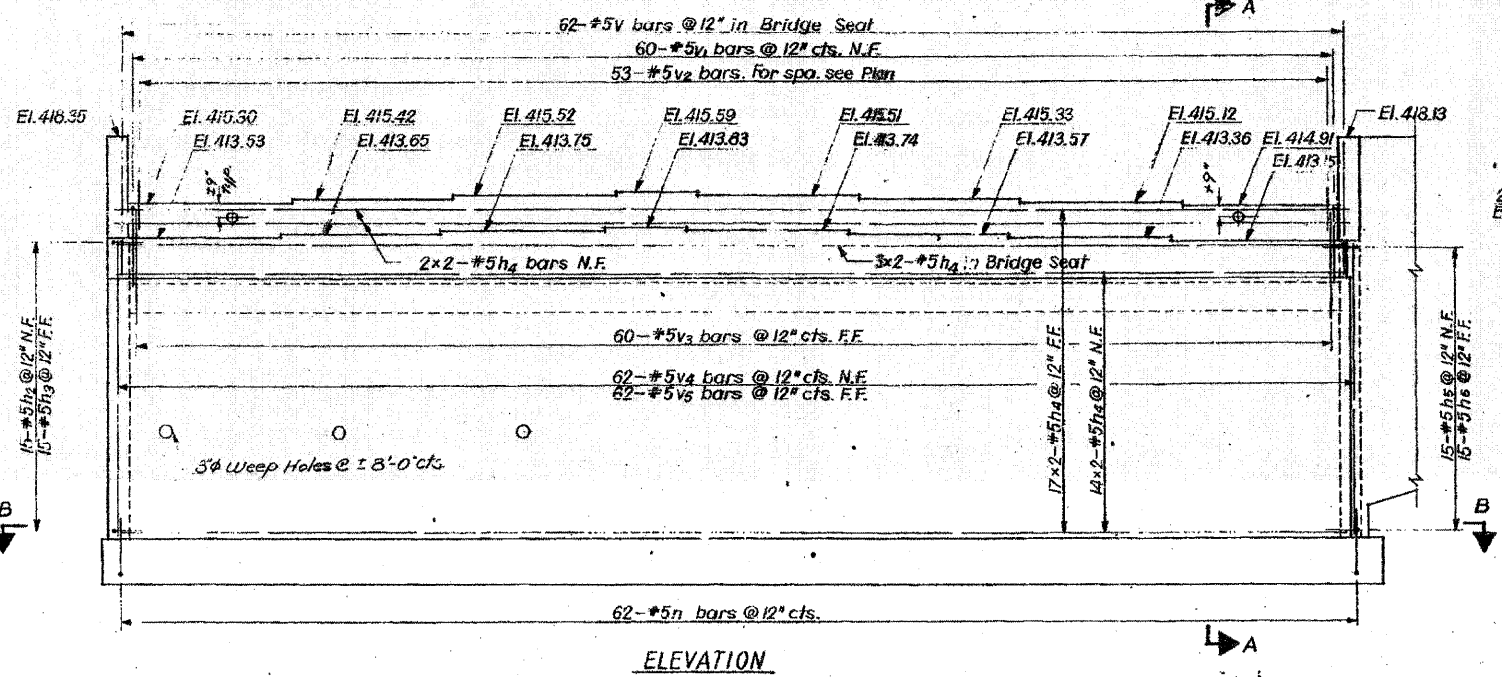
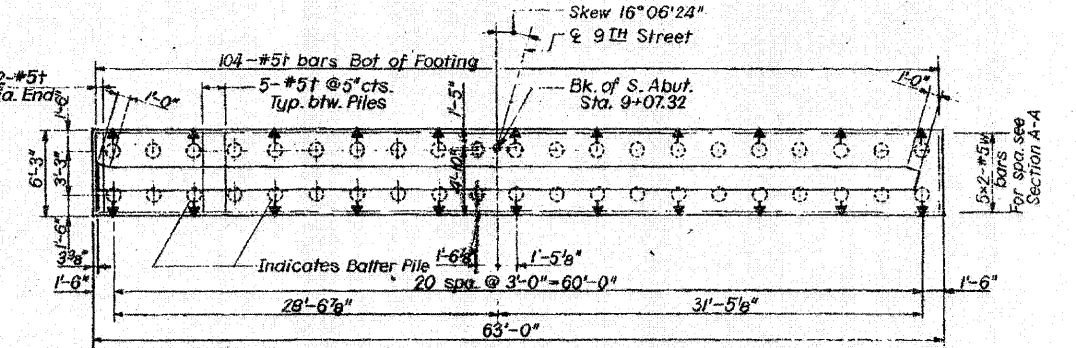


FOR INFORMATION ONLY

ROUTE NO.	SECTION	COUNTY	TOTAL SHEETS	SHEET NO.
F.A.I.-64	82-1HB	ST. CLAIR	110	70
FED. ROAD DIV. NO. 4		ILLINOIS PROJECT		

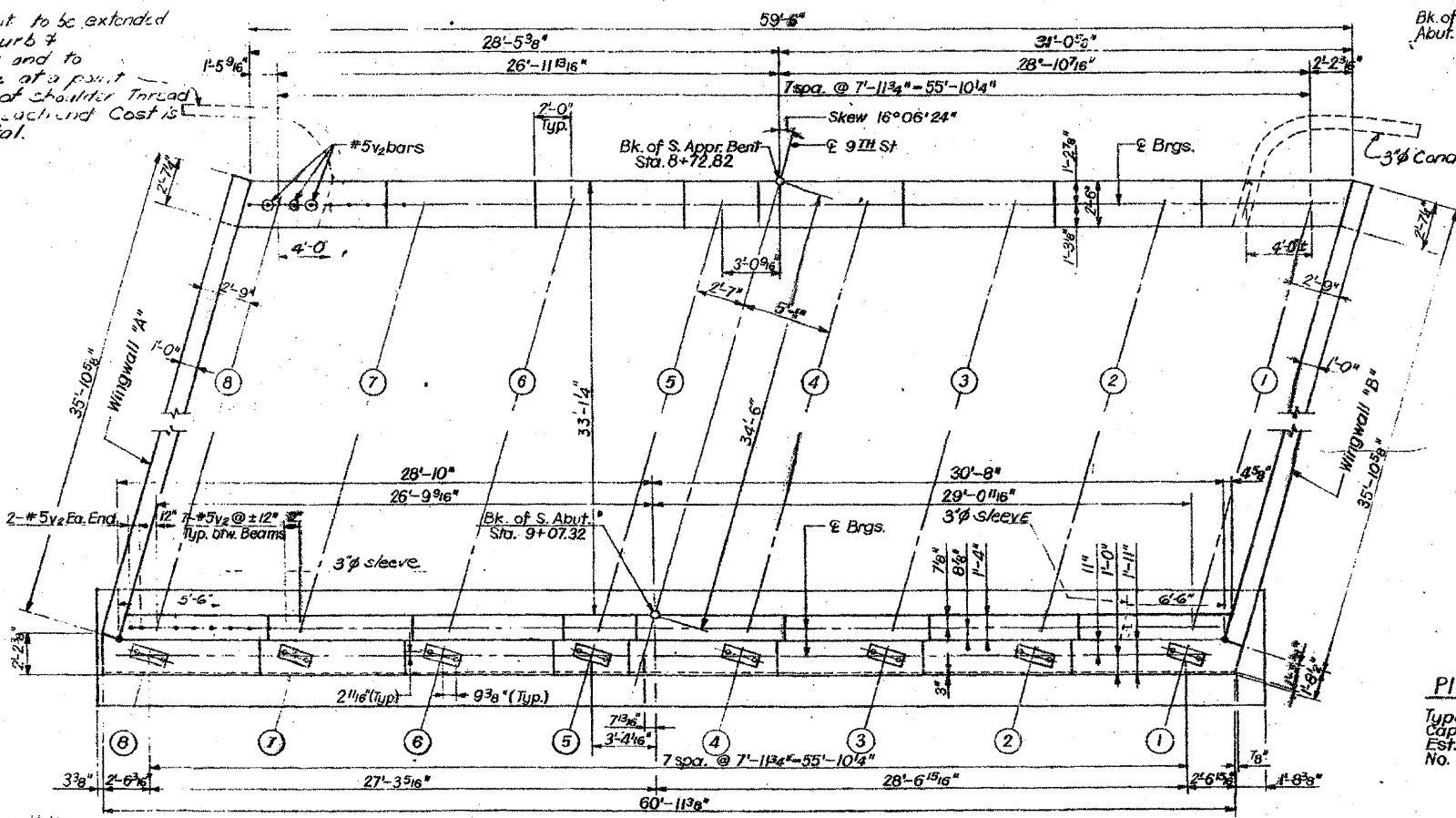


ELEVATION

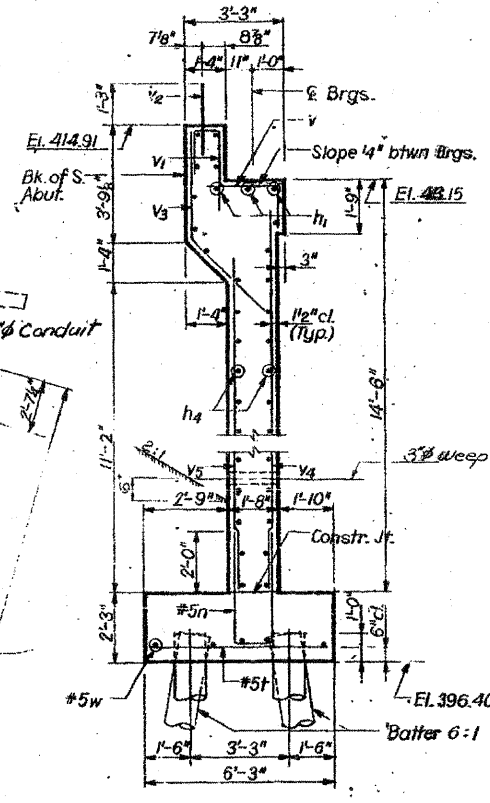


FOOTING PLAN

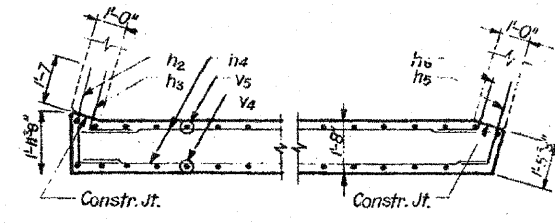
3/8 Conduit to be extended beyond curb & sidewalk and to terminate at a point outside of shoulder thread and cap each end. Cost is incidental.



PLAN



SECTION A-A



SECTION B-B

KEY TO NOTATION

- N.F. = Near Face
- F.F. = Far Face
- E.F. = Each Face

Note:

In placing reinforcement bars care shall be taken to clear Anchor Bolts. Four steps nonolithically with cap. For Bar List, Bill of Material and Bar Bending Diagrams see Sheet No. 13. Work this sheet in conjunction with Sheet 13. Bars indicated thus 15x2-#4 etc. indicates 15 lines of bars with 2 lengths per line. For chamfer Detail see Sht. No. 14.

PILE DATA

Type: Creosoted Timber
Capacity: 22 Ton
Est. Length: 15 Ft.
No. Req'd: 42

DESIGNED BY: H.N.
DRAWN BY: B.B.
CHECKED BY: Y.B.

STATE OF ILLINOIS			
DIVISION OF HIGHWAYS			
SOUTH ABUTMENT			
F.A. ROUTE 12 (9TH STREET) OVER F.A.I. ROUTE 64			
STATION 55+62.20			
F.A.I. RT. 64	ST. CLAIR COUNTY	SECTION 82-1HB	SHEET
H. W. LOCHNER, INC. ENGINEERS CHICAGO, ILLINOIS			12 OF 18

FILE NAME =	USER NAME = moronik	DESIGNED	REVISED -	STATE OF ILLINOIS DEPARTMENT OF TRANSPORTATION	EXISTING BRIDGE PLAN - 9TH STREET	F.A. RTE.	SECTION	COUNTY	TOTAL SHEETS	SHEET NO.	
D8T-r-082-0326-shr-pln3.dgn		DRAWN PP	REVISED -			82-1-3HB, 82-2N, 82-1-12RS	ST. CLAIR	352	274		
		CHECKED AB	REVISED -			9166/9180/9213/9214	CONTRACT NO. 76C51				
		DATE 03/31/2011	REVISED -			FED. ROAD DIST. NO. ILLINOIS	FED. AID PROJECT				
PLOT SCALE = 480,000' / ft.		DATE 03/31/2011		SCALE: NONE		SHEET NO. 13 OF 19 SHEETS		STA. TO STA.		FED. ROAD DIST. NO. ILLINOIS	
PLOT DATE = MAR. 31, 2011											