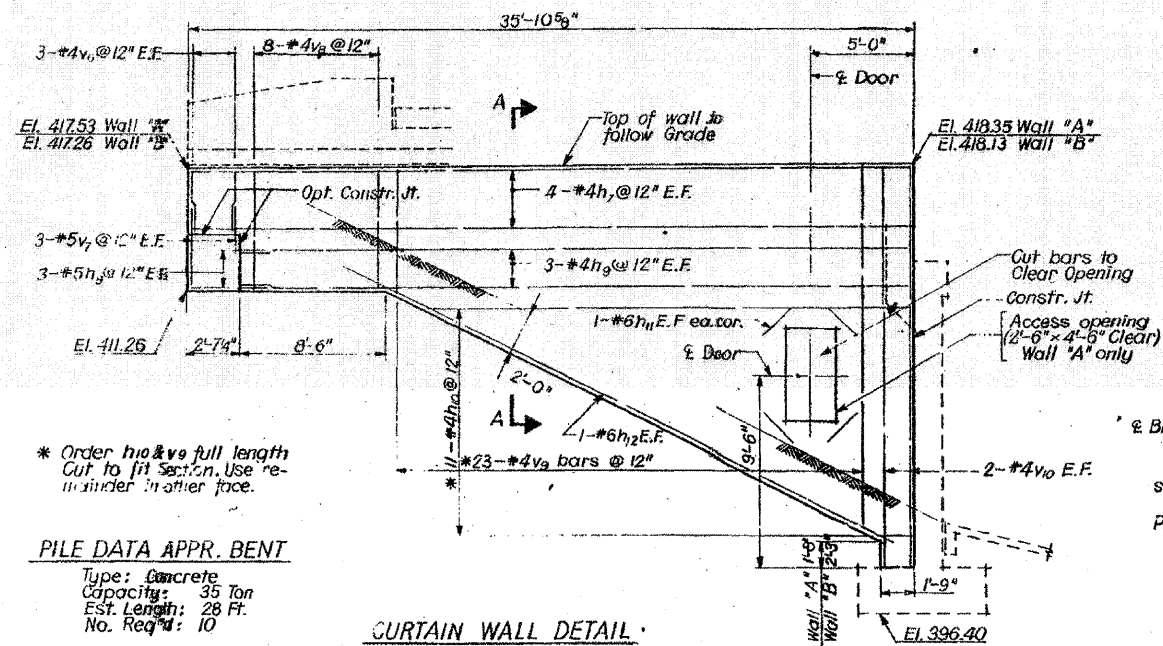


FOR INFORMATION ONLY

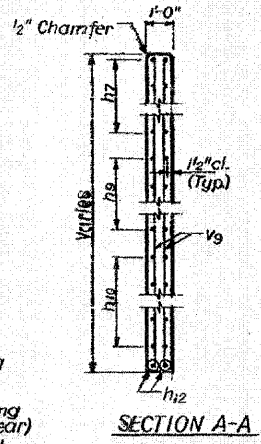
ROUTE NO.	SECTION	COUNTY	TOTAL SHEETS	SHEET NO.
F.A.I. - 64	82-1HB	ST. CLAIR	110	71
FED. ROAD DIV. NO. 1		ILLINOIS	PROJECT	



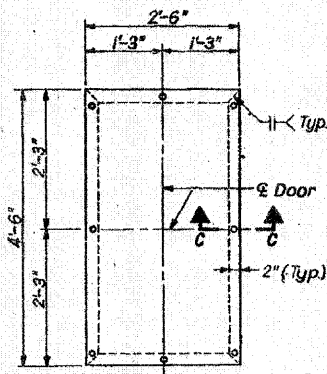
* Order h10 & v9 full length Cut to fit Section. Use rebar in other face.

PILE DATA APPR. BENT
 Type: Concrete
 Capacity: 35 Ton
 Est. Length: 28 Ft.
 No. Req'd: 10

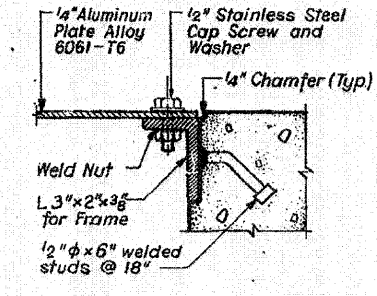
CURTAIN WALL DETAIL



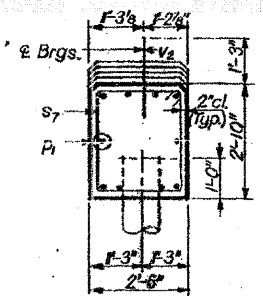
SECTION A-A



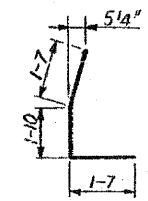
DOOR ELEVATION
 (Cost of Door and Door Frame incidental to Class X Concrete)
 2 Req'd



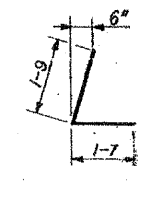
SECTION C-C



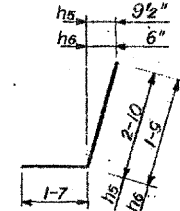
SECTION B-B



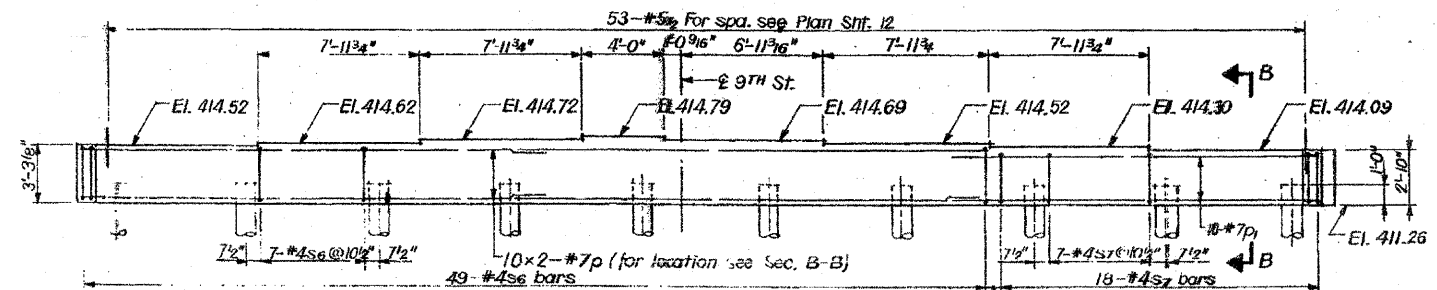
Bar h2



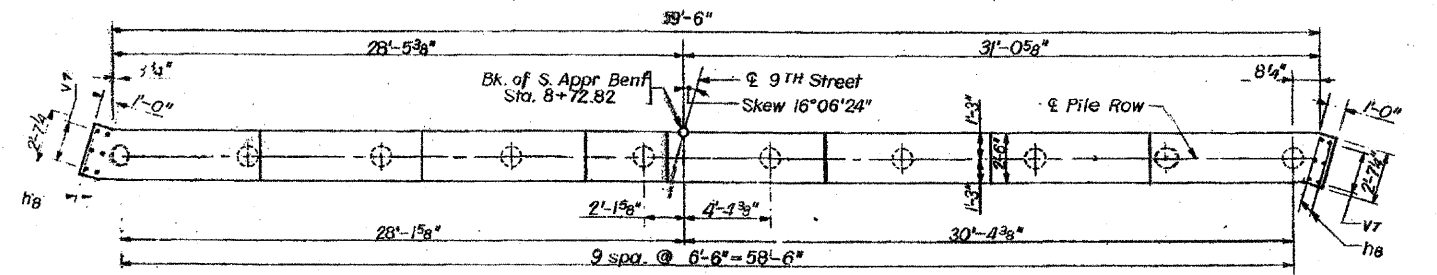
Bar h3



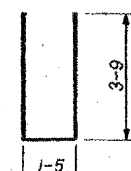
Bars h5 & h6



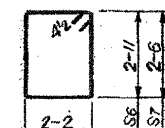
ELEVATION



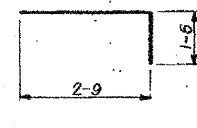
PLAN



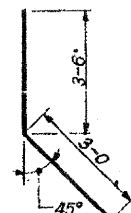
Bar n



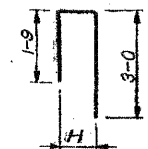
Bar s6 & s7



Bar v



Bar v1



Bar v3

BILL OF MATERIAL

Bar	No.	Size	Length	Shape
h2	15	#5	5-0	L
h3	15	#5	3-4	L
h4	72	#5	31-2	L
h5	15	#5	4-5	J
h6	15	#5	3-4	J
h7	16	#4	35-7	---
h8	12	#5	3-8	---
h9	12	#4	33-1	---
h10	22	#4	25-6	---
h11	8	#6	3-0	---
h12	4	#6	31-0	---
n	62	#5	8-11	U
p	20	#7	23-0	---
pi	10	#7	19-0	---
s6	49	#4	10-11	J
s7	16	#4	10-1	J
t	104	#5	6-0	---
v	62	#5	4-3	J
v1	60	#5	5-10	J
v2	106	#5	2-6	---
v3	60	#5	6-6	L
v4	62	#6	14-0	---
v5	62	#5	12-6	---
v6	12	#4	2-8	---
v7	12	#5	4-7	---
v8	32	#4	6-0	---
v9	46	#4	23-10	---
v10	8	#4	19-4	---
w	10	#5	32-3	---

Item	Unit	Total
Class X Concrete	Cu. Yds.	148.9
Reinforcement Bars	Lbs.	11,530
Concrete Piles	Lin. Ft.	280
Crescoted Timber Piles	Lin. Ft.	630

NOTES:
 Work this sheet in conjunction with Sheet No. 12

STATE OF ILLINOIS
 DIVISION OF HIGHWAYS
SOUTH ABUTMENT WINGWALLS AND APPROACH BENT
 F.A. ROUTE 12 (3RD STREET) OVER F.A.I. ROUTE 64
 STATION 55+62.20
 F.A.I. RT. 64 ST. CLAIR COUNTY SECTION 82-1HB
 H. W. LOCHNER, INC. ENGINEERS CHICAGO, ILLINOIS
 SHEET 13 of 18