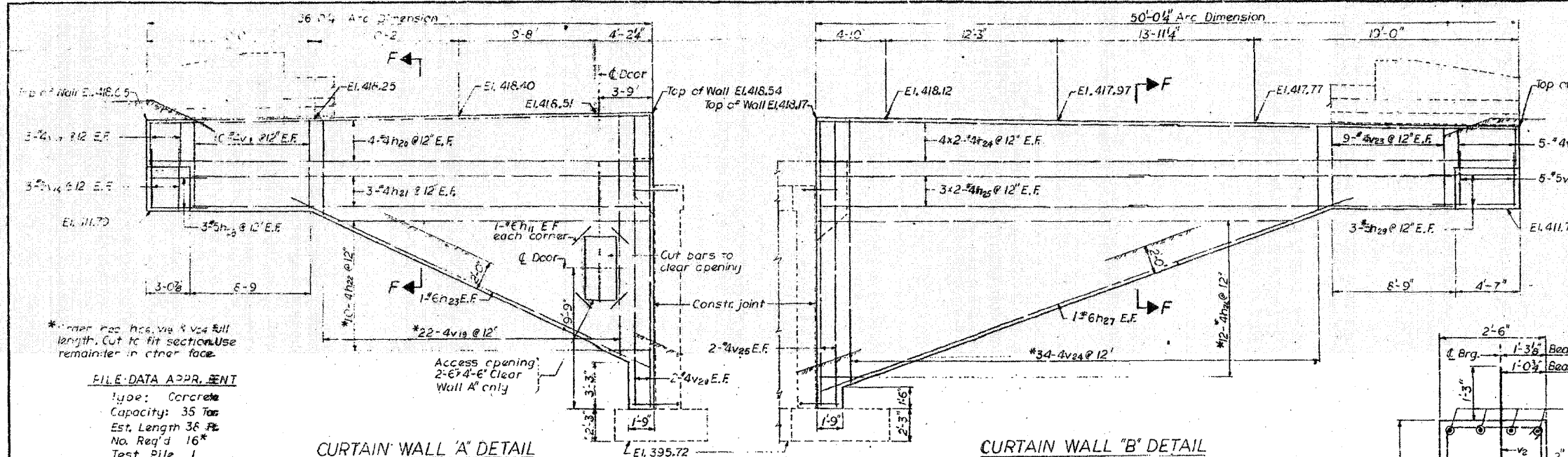
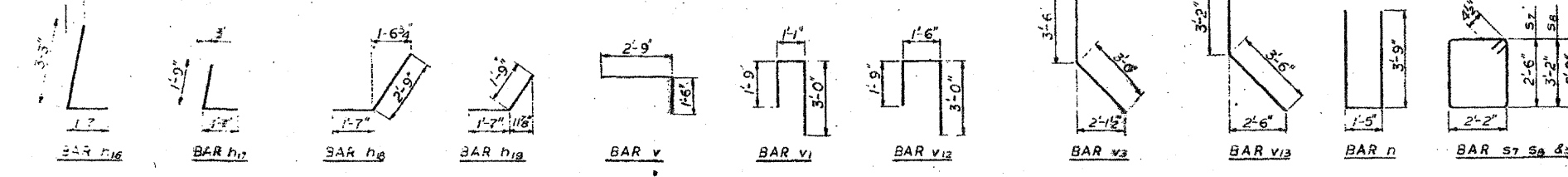
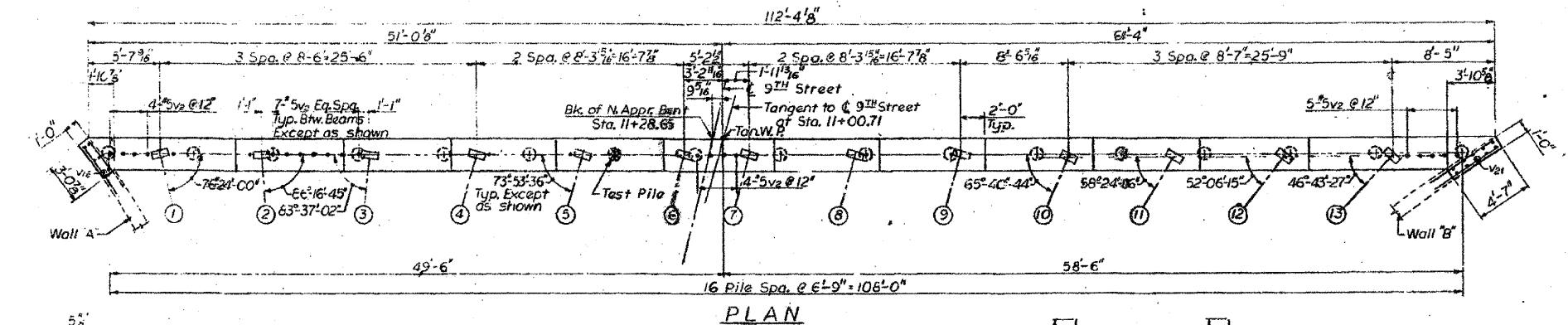
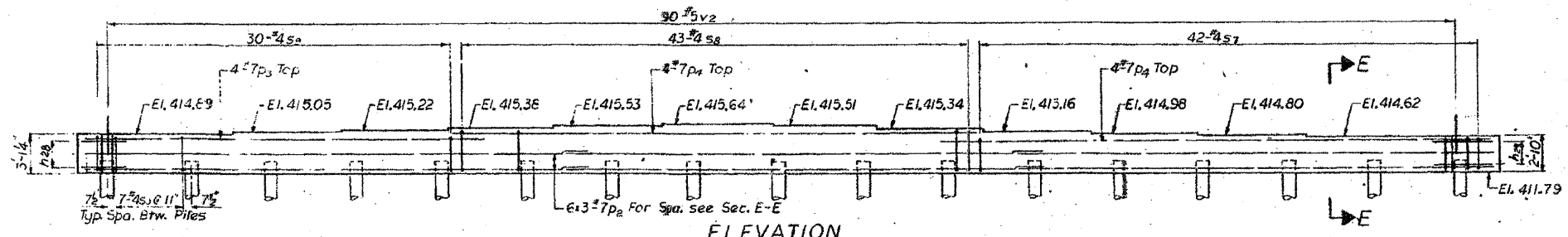


FOR INFORMATION ONLY



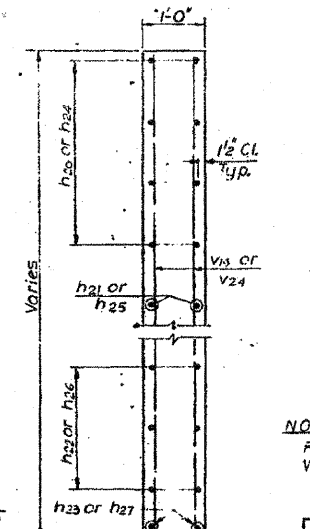
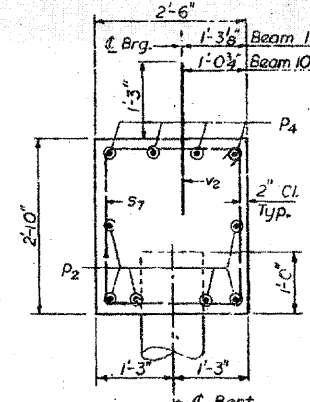
FILE DATA APPR. SENT
 Type: Concrete
 Capacity: 35 Ton
 Est. Length 36 Ft
 No. Req'd 16*
 Test Pile 1
 * Does not include Test Pile



DESIGNED BY: V.B.
 DRAWN BY: V.B.
 CHECKED BY: H.N.

ROUTE NO.	SECTION	COUNTY	TOTAL SHEETS	SHEET NO.
F.A.I. - 64	82-1HB	ST. CLAIR	110	73
FED. ROAD DIV. NO. 4		ILLINOIS PROJECT		

Bar	No.	Size	Length	Shape
h1	8	#6	3'-0"	
h3	70	#5	34'-6"	
h4	4	#5	15'-6"	
h5	8	#5	26'-3"	
h6	16	#5	4'-10"	
h7	16	#5	3'-4"	
h8	16	#5	4'-1"	
h9	16	#5	3'-4"	
h20	8	#4	35'-9"	
h21	6	#4	32'-9"	
h22	10	#4	25'-6"	
h23	2	#6	29'-0"	
h24	16	#4	25'-0"	
h25	12	#4	23'-3"	
h26	12	#4	37'-0"	
h27	2	#6	40'-0"	
h28	6	#5	4'-6"	
h29	6	#5	6'-0"	
v	66	#5	8'-11"	
v1	53	#5	5'-10"	
v2	140	#5	2'-6"	
v3	54	#5	6'-2"	
v12	14	#5	6'-3"	
v13	14	#5	6'-8"	
v14	68	#5	15'-3"	
v15	69	#5	13'-3"	
v6	6	#5	4'-3"	
v7	6	#4	3'-0"	
v18	20	#4	6'-0"	
v19	22	#4	23'-3"	
v20	4	#4	20'-5"	
v21	10	#5	3'-11"	
v22	10	#4	2'-9"	
v23	18	#4	5'-6"	
v24	34	#4	24'-3"	
v25	4	#4	20'-1"	
n	66	#5	8'-11"	
p2	18	#7	38'-4"	
p3	4	#7	31'-0"	
p4	8	#7	42'-0"	
s7	42	#4	10'-1"	
s8	43	#4	11'-5"	
s9	30	#4	10'-7"	
t1	114	#5	6'-0"	
w1	10	#5	36'-0"	
Item	Unit	Total		
Class X Concrete	Cu. Yds.	186.0		
Reinforcement Bars	Lbs.	14,360		
Concrete Piles	Lin. Ft.	608		
Crossed Timber Piles	Lin. Ft.	920		
Test Pile Concrete	Each	1		



NOTES:
 For Detail of Aluminum Door see Sheet No. 15
 Work this sheet in conjunction with Sh. No. 14

STATE OF ILLINOIS
 DIVISION OF HIGHWAYS
 NORTH ABUTMENT
 WINGWALLS AND APPROACH BENT
 F.A. ROUTE 12 (9TH STREET)
 OVER F.A.I. ROUTE 64
 STATION 55+62.20
 F.A.I. RT. 64 ST. CLAIR COUNTY SECTION 82-1HB
 H. W. LOCHNER, INC.
 ENGINEERS
 CHICAGO, ILLINOIS
 SHEET 15 OF 18