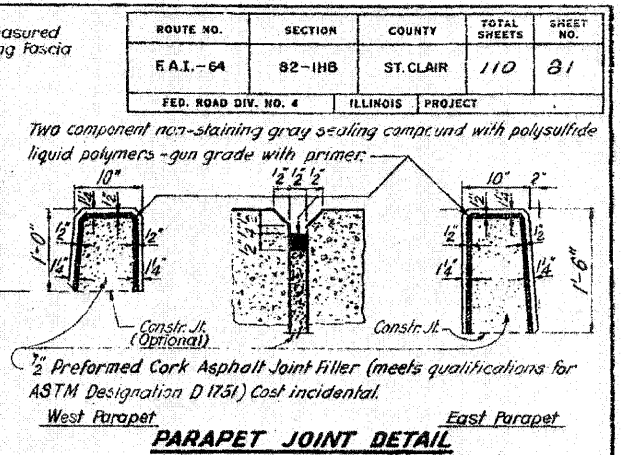
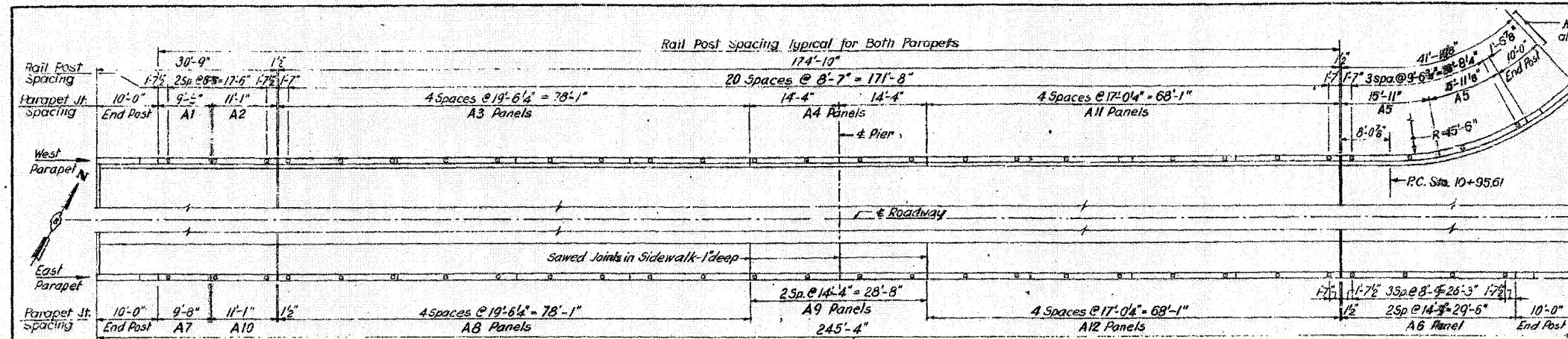
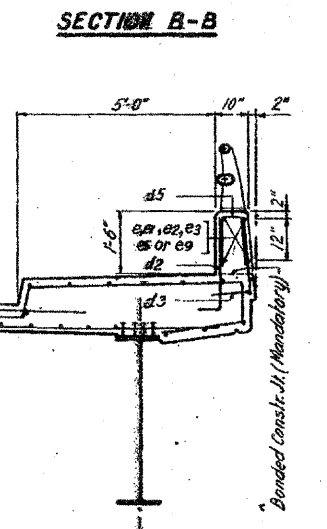
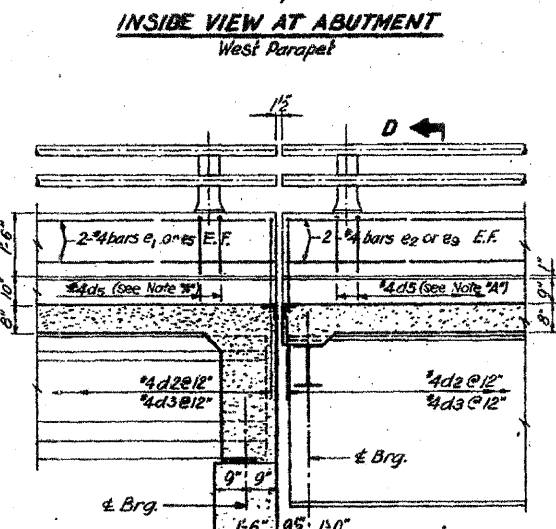
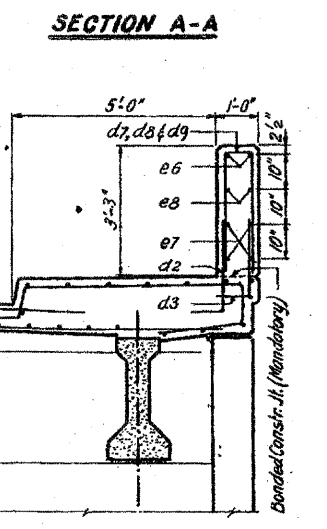
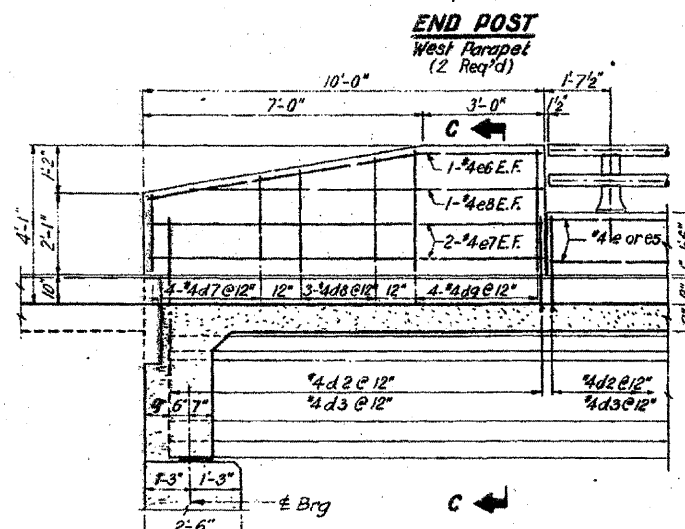
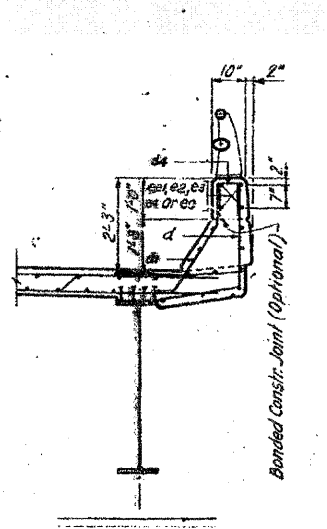
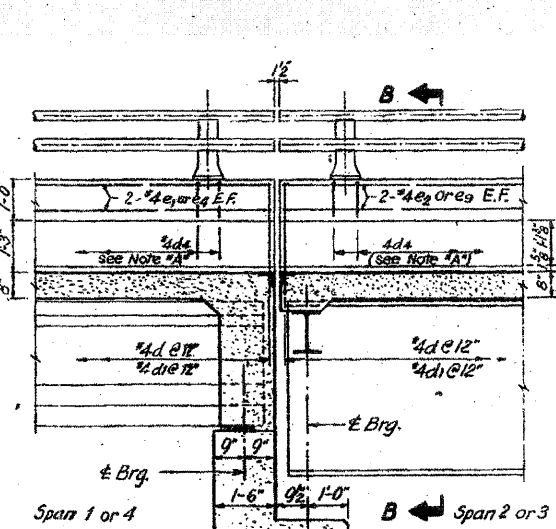
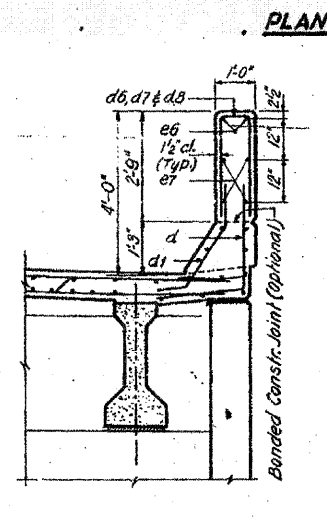
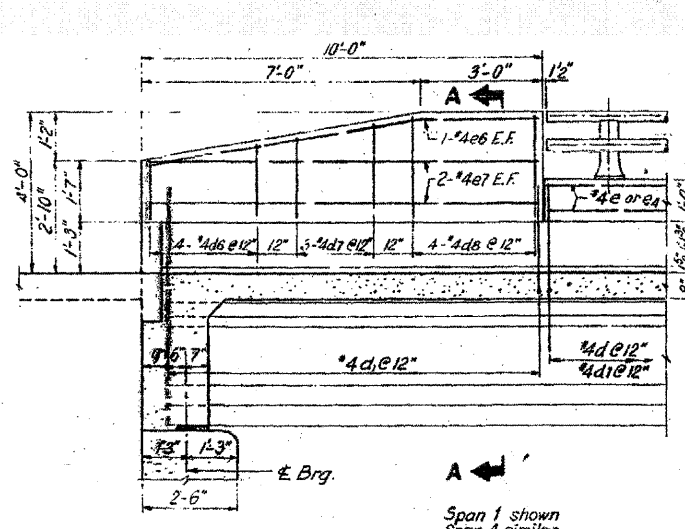


FOR INFORMATION ONLY



ROUTE NO.	SECTION	COUNTY	TOTAL SHEETS	SHEET NO.
F.A.I.-64	82-1HB	ST. CLAIR	110	81
FED. ROAD DIV. NO. 4	ILLINOIS	PROJECT		



BAR LIST

Panel	No. Panels	Bar	No. Bar	Size
A1	1	e	4	#4
A2	1	e1	4	
A3	4	e2	16	
A4	2	e3	8	
A5	2	e4	8	
A6	2	e5	8	
A7	1	e	4	
A8	4	e2	16	
A9	2	e3	8	
A10	1	e1	4	
A11	4	e3	16	
A12	4	e3	16	#4

BILL OF MATERIAL

Bar	No.	Size	Length	St.ipe
d4	56	#4	2'-11"	□
d5	56	#4	2'-11"	□
d6	8	#4	3'-7"	□
d7	14	#4	4'-7"	□
d8	14	#4	5'-9"	□
d9	8	#4	6'-7"	□
e	8	#4	9'-5"	---
e1	8	#4	10'-10"	---
e2	32	#4	19'-3"	---
e3	16	#4	14'-1"	---
e4	8	#4	15'-8"	---
e5	8	#4	14'-6"	---
e6	8	#4	9'-9"	---
e7	16	#4	9'-9"	---
e8	4	#4	8'-6"	---
e9	32	#4	16'-9"	---

Item	Unit	Total
Class X Concrete	Cu. Yds.	20.5
Reinforcement Bars	Lbs.	1710

DESIGNED BY: R.M.R.
DRAWN BY: L.S.
CHECKED BY: R.M.R.

Note "A": 2-#4 to be placed at each rail post in West Parapet.
2-#4 to be placed at each rail post in East Parapet.

STATE OF ILLINOIS
DIVISION OF HIGHWAYS
PARAPET AND RAILING LAYOUT
F.A. ROUTE 12 (10TH STREET)
OVER F.A.I. ROUTE 64
STATION 58+17.87
F.A.I. RT. 64 ST. CLAIR CO. SECTION 82-1HB
H. W. LOCHNER, INC.
ENGINEERS
CHICAGO, ILLINOIS
SHEET
5 of 13