

FOR INFORMATION ONLY

ROUTE NO.	SECTION	COUNTY	TOTAL SHEETS	SHEET NO.
F.A.I.-64	82-1HB	ST. CLAIR	110	83
FED. ROAD DIV. NO. 4		ILLINOIS PROJECT		

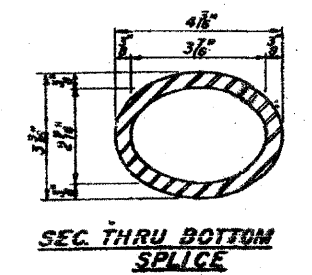
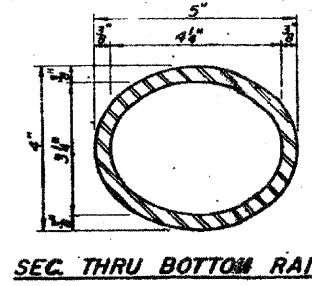
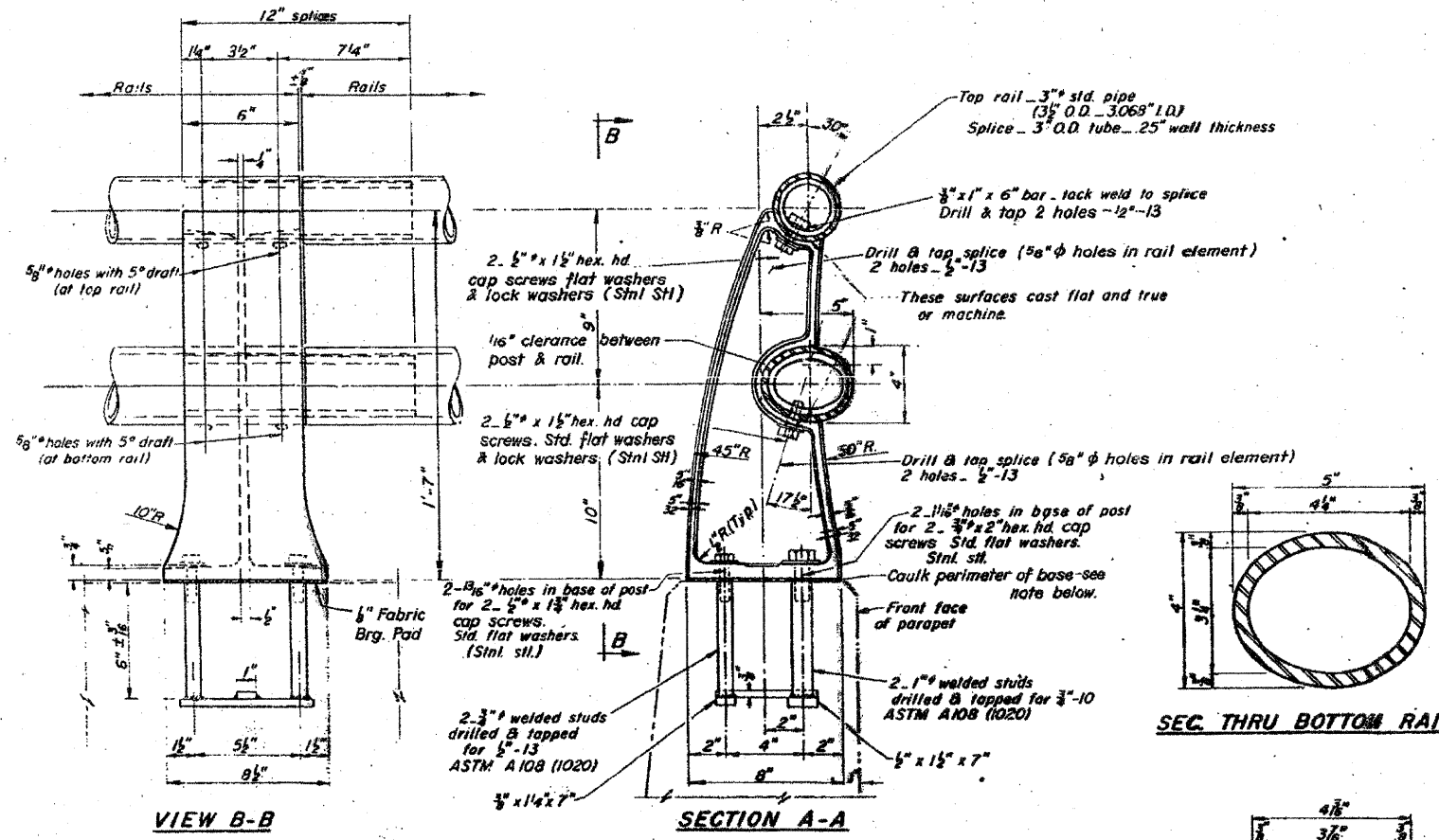
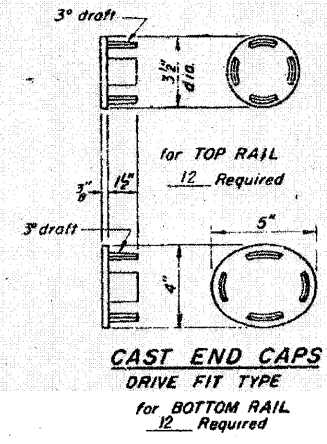
NOTES:
 All Posts shall be normal to parapet.
 All Posts shall be malleable cast iron conforming to ASTM A-47, Grade 35018, galvanized to ASTM A-153.
 All Rail Tubing shall conform to applicable requirements of ASTM A-53, Grade B, (pipe or tube) galvanized to ASTM A-120.

Provide 1- $\frac{1}{2}$ " and 2- $\frac{1}{8}$ " galvanized sheet steel shims for 25% of the Posts. Rail element shall be parallel to Grade - high spots shall be ground and low spots shimmed.
 If any of the galvanizing coat is damaged or removed during erection, the affected area shall be painted with one coat of zinc paint in accordance with Military Specification MIL-P-26915 Type 1, air-dry cure.

METHOD of MEASUREMENT: Steel railing shall be measured in lineal feet. The length paid for shall be the overall length along the top longitudinal railing member through all posts and gaps.

BASIS of PAYMENT: Steel railing will be paid for at the contract unit price per lineal foot for STEEL RAILING TYPE M, measured as specified, in accordance with Section 508 of the Standard Specifications, except as noted.

Cost of rail splice, end caps and hardware to be incidental to item STEEL RAILING TYPE M.



***BILL of MATERIAL**

Item	Unit	Quantity
STEEL RAILING TYPE M	Lin. Ft.	453

* Alternate Railing

STATE OF ILLINOIS
 DIVISION OF HIGHWAYS
STEEL RAILING TYPE M
 F.A. ROUTE 12 (10TH STREET)
 OVER F.A.I. ROUTE 64
 STATION 58+17.87
 F.A.I. RT. 64 ST. CLAIR CO. SECTION 82-1HB
 H. W. LOCHNER, INC.
 ENGINEERS
 CHICAGO, ILLINOIS
 SHEET
 6A of 18

DESIGNED BY: R.M.P.
 DRAWN BY:
 CHECKED BY:

Note! Seal base of post to parapet with two component non-staining gray sealing compound with polysulfide liquid polymers—gun grade with primer.

Note! Splice must be sliding fit in Rail Section.