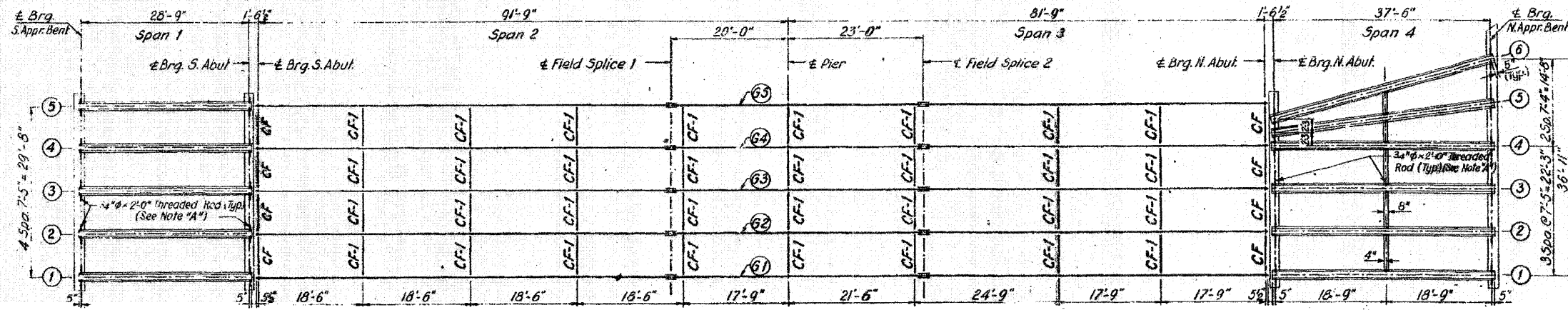


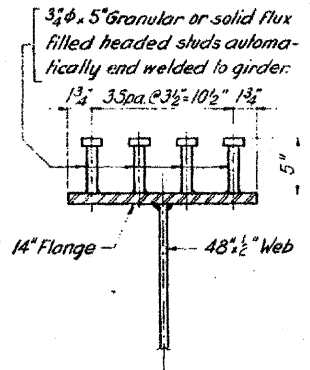
FOR INFORMATION ONLY

ROUTE NO.	SECTION	COUNTY	TOTAL SHEETS	SHEET NO.
F.A.I. - 64	82-1HB	ST. CLAIR	110	85
FED. ROAD DIV. NO. 4		ILLINOIS PROJECT		

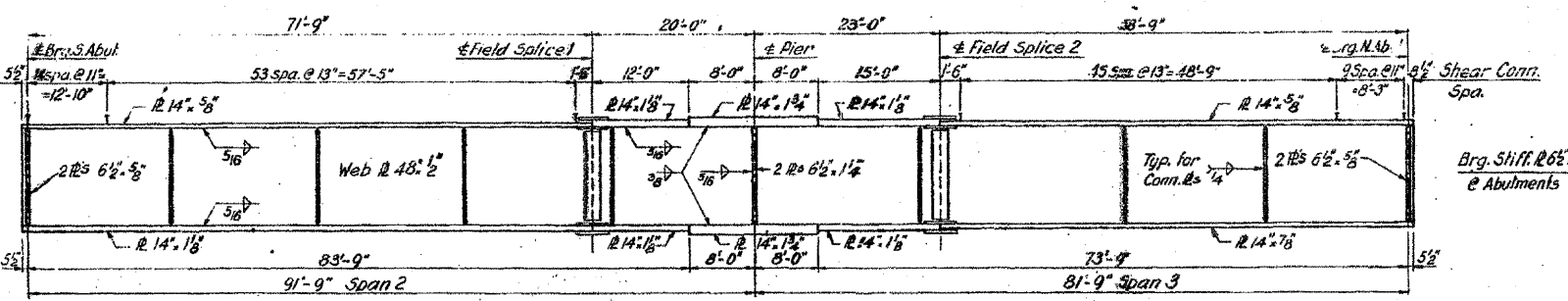


Note "A": For lengths of threaded rod other than 2'-0" see st. Nos. 2 & 4.

PLAN



SHEAR CONNECTOR DETAIL



ELEVATION

TABLE OF MOMENTS AND SHEARS (Interior Beam)

	SPAN 1		SPAN 2						SPAN 4				
	Moment (Ft.-Kip)	Shear (Kips)	Moment (Ft.-Kip)	Reaction (Kips)	Shear (Kips)	Moment (Ft.-Kip)	Shear (Kips)	Moment (Ft.-Kip)	Shear (Kips)				
D.L.	116	17	550	1060	32	108				214	22		
S.D.L.	28	4	180	230	10	30	10	4	3	9	15	48	5
L.L.	180	32	756	625	43	71	43	32	24	35	46	273	36
IMP	54	10	174	145	10	17	10	7	6	8	11	82	11
TOTAL	378	63		2060	95	226	63	43	33	52	72	617	74

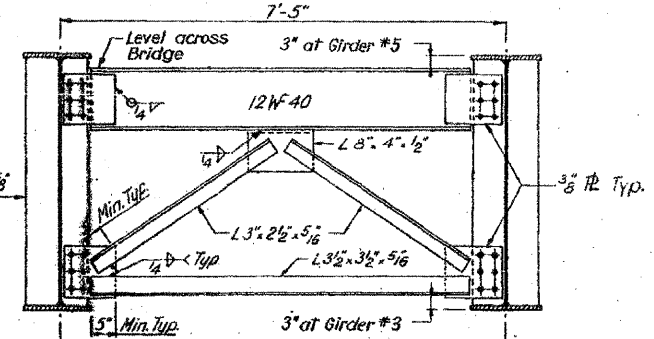
TOP OF WEB ELEVATIONS (For Fabrication only)

	61	62	63	64	65
± Bearing South Abutment	415.833	485.900	416.016	415.939	415.824
± Field Splice 1	416.356	486.424	416.540	416.463	416.347
± Bearing Pier	416.488	486.556	416.672	416.595	416.479
± Field Splice 2	416.640	486.708	416.824	416.747	416.631
± Bearing North Abutment	417.113	487.189	417.305	417.228	417.113

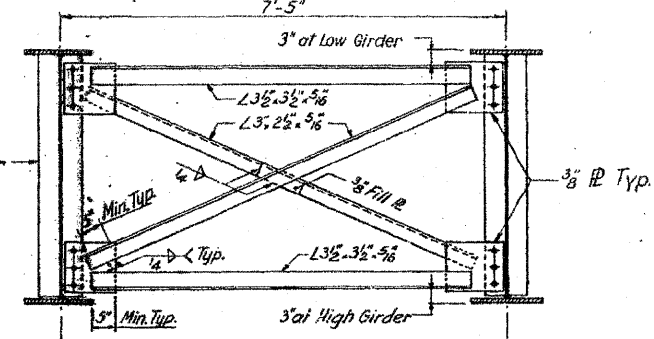
GIRDER PROPERTIES

Steel Sections	
I <sub>s</sub>	17500 in <sup>4</sup>
S <sub>rs</sub>	607 in <sup>3</sup>
S <sub>bs</sub>	833 in <sup>3</sup>
Composite Section	
I <sub>c</sub>	45100 in <sup>4</sup>
S <sub>rc</sub>	5100 in <sup>3</sup>
S <sub>bc</sub>	1102 in <sup>3</sup>

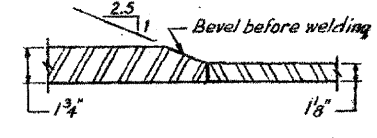
Section Modulus at Pier = 1312 in<sup>3</sup>  
\* ± Pt. Span 2



TYPICAL CROSS FRAME - CF

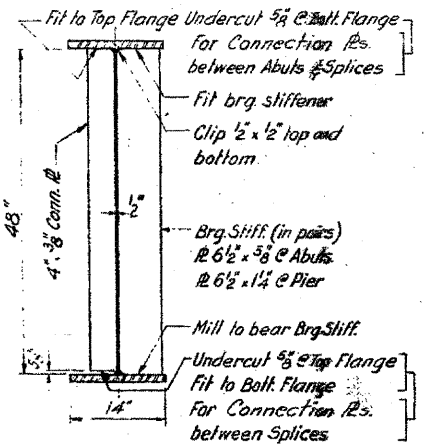


TYPICAL CROSS FRAME - CF-1



SHOP FLANGE SPLICE

TYPICAL SECTION



DESIGNED BY: R.M.R.  
DRAWN BY: L.S.  
CHECKED BY: S.F.

STATE OF ILLINOIS  
DIVISION OF HIGHWAYS  
FRAMING PLAN AND STEEL DETAILS  
F.A. ROUTE 12 (10TH STREET)  
OVER F.A.I. ROUTE 64  
STATION 58+17.87  
F.A.I. RT. 64 ST. CLAIR CO. SECTION 82-1HB  
H. W. LOCHNER, INC. ENGINEERS CHICAGO, ILLINOIS  
SHEET 8 OF 18