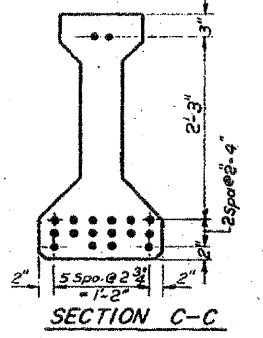
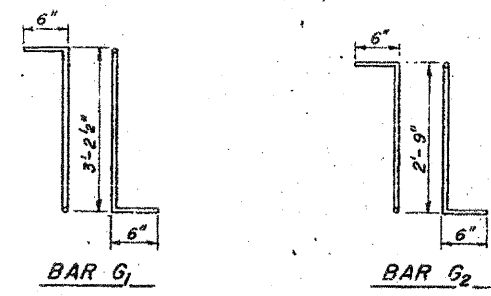
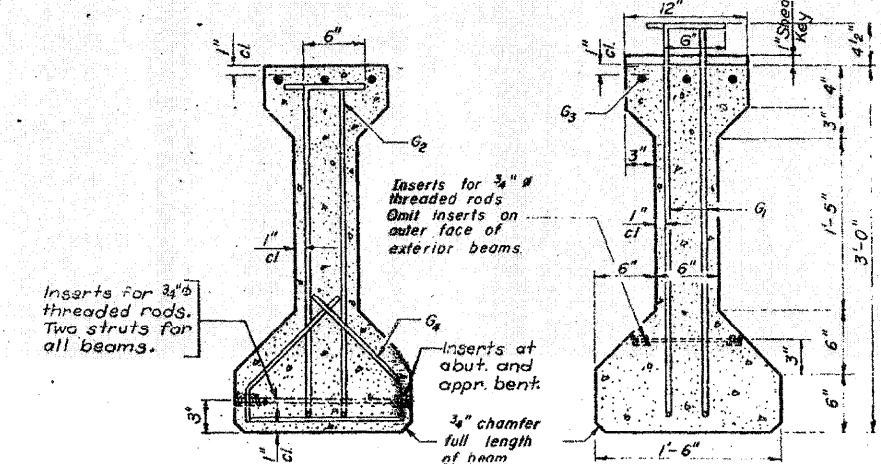
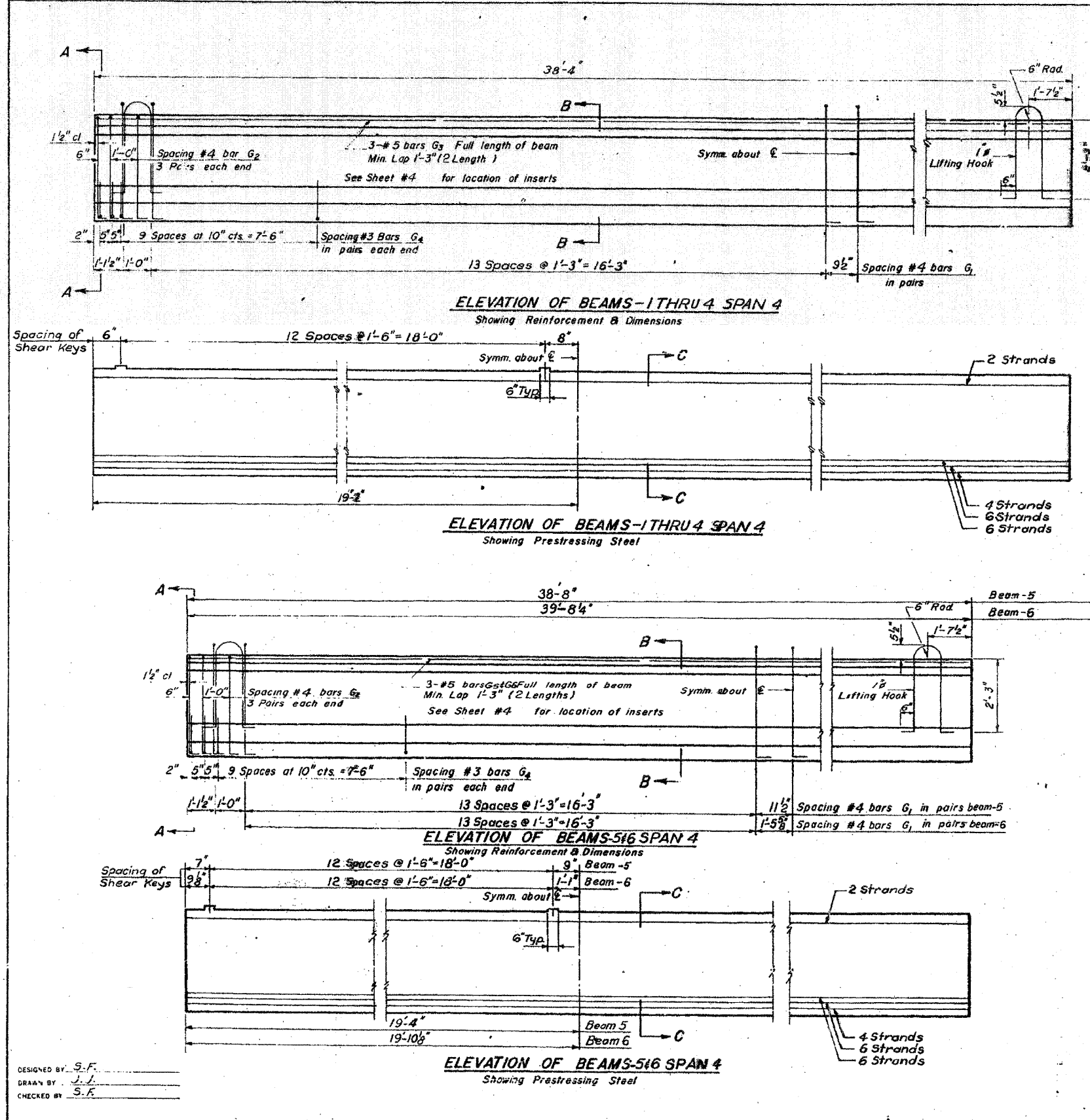


FOR INFORMATION ONLY

ROUTE NO.	SECTION	COUNTY	TOTAL SHEETS	SHEET NO.
F.A.I. - 64	82 - 1HB	ST. CLAIR	110	87
FED. ROAD DIV. NO. 4		ILLINOIS PROJECT		



*** BAR LIST**

Beams	Bar	No.	Size	Length	Shape
1 THRU 6	G1	62	#4	4'-2 1/2"	TL
"	G2	12	#4	3'-9"	TL
1 THRU 4	G3	6	#5	19'-9"	---
1 THRU 6	G4	48	#3	2'-7"	L
5	G5	6	#5	20'-0"	---
6	G6	6	#5	20'-6"	---

* For one beam only

NOTES

All inserts and threaded rods for inserts, reinforcing and Prestressing Steel, and other items which are cast into the Precast Concrete I-Beams shall be included in the contract unit price per linear foot of "Furnishing And Erecting Precast Prestressed Concrete I-Beams, 36 In."

See Standard Specifications for additional information regarding materials, Prestressing equipment, construction and handling methods and other requirements for Precast Prestressed Concrete I-Beams.

Prestressing Steel shall have a nominal diameter of 1/8".

Inserts for 3/4" threaded rods are to be two strut coil type for interior I-Beams and single coil, flared long type for exterior I-Beams.

Steel for lifting hooks shall be non-deformed bars of structural or intermediate grade billet steel.

End of beams to be encased with cast in place concrete shall not be coated with asphalt paint.

BILL OF MATERIAL

Item	Unit	Total
Furnishing & Erecting Precast Prestressed Concrete I-Beams, 36"	Lin. Ft.	232

STATE OF ILLINOIS
 DIVISION OF HIGHWAYS
PRESTRESSED BEAM DETAILS
 SPAN 4
 F.A. ROUTE 12 (10TH STREET)
 OVER F.A.I. ROUTE 64
 STATION 58+17.87
 F.A.I. RT. 64 ST. CLAIR CO. SECTION 82-1HB
 H. W. LOCHNER, INC.
 ENGINEERS
 CHICAGO, ILLINOIS

DESIGNED BY: S.F.
 DRAWN BY: J.L.
 CHECKED BY: S.F.