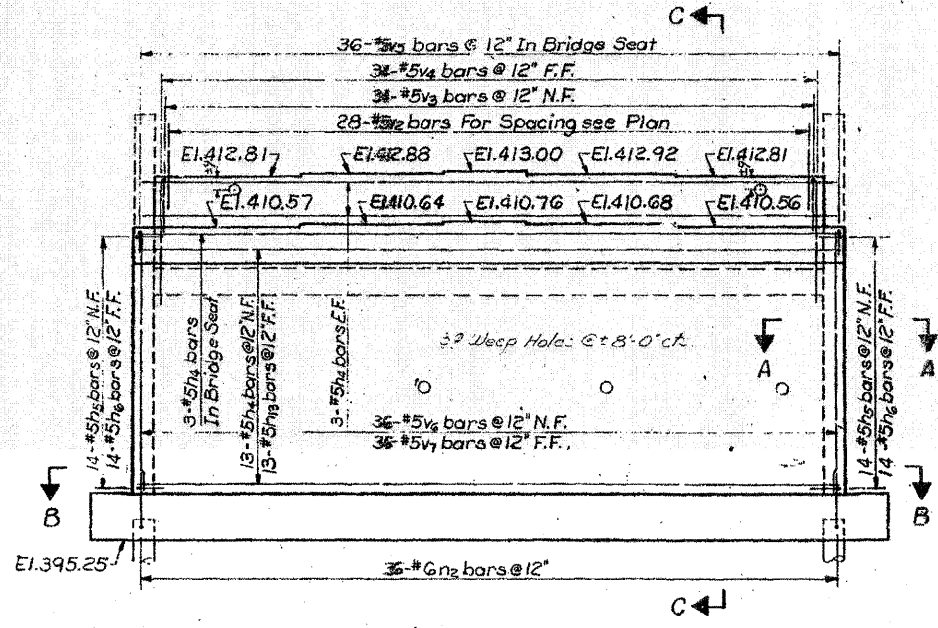


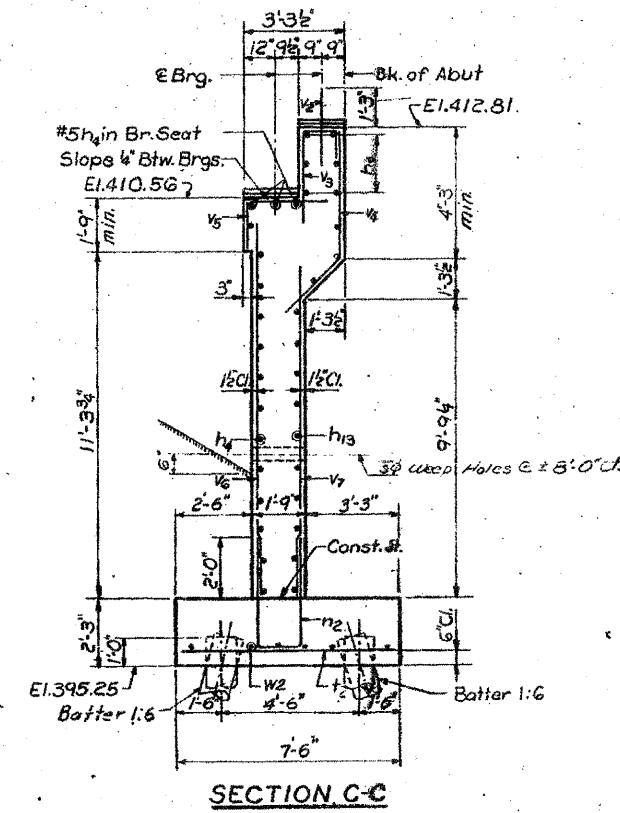
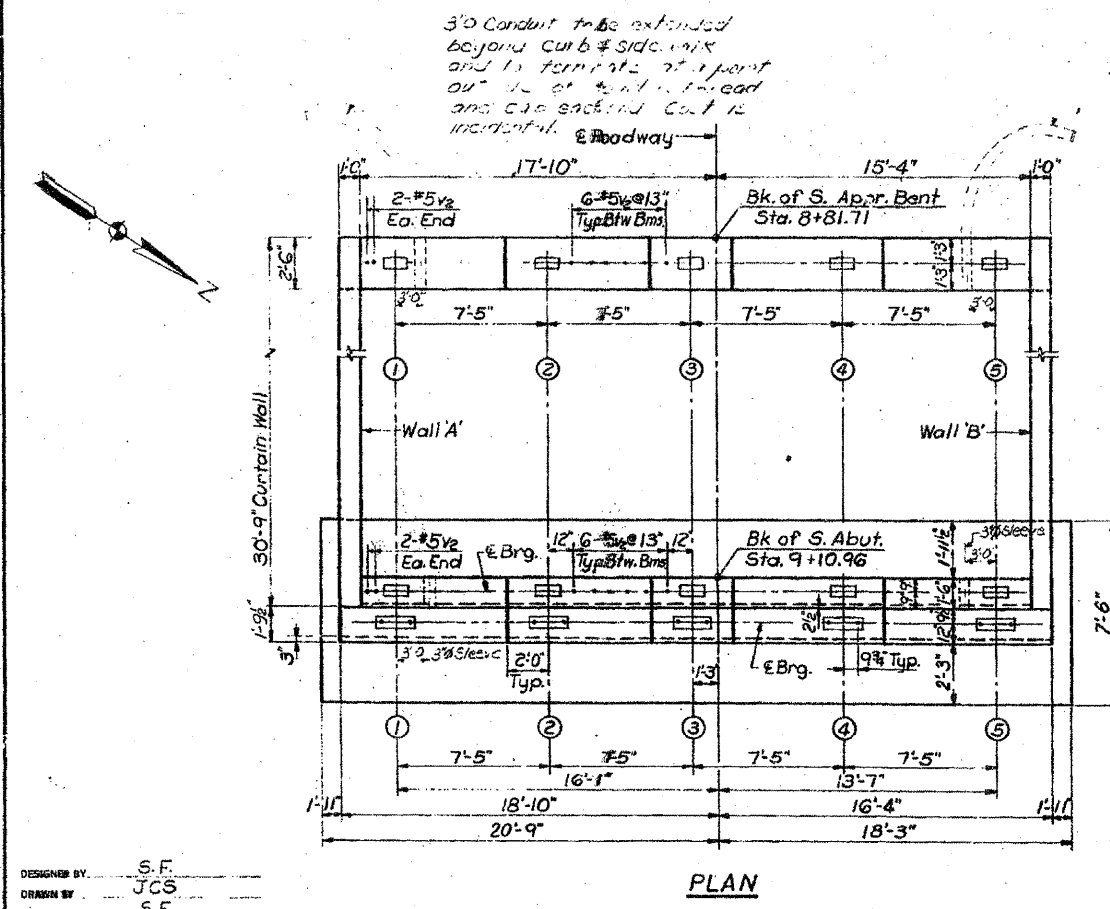
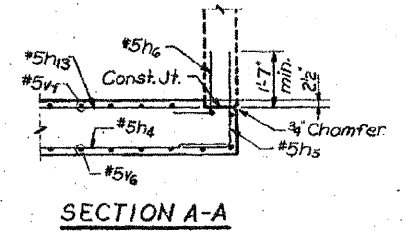
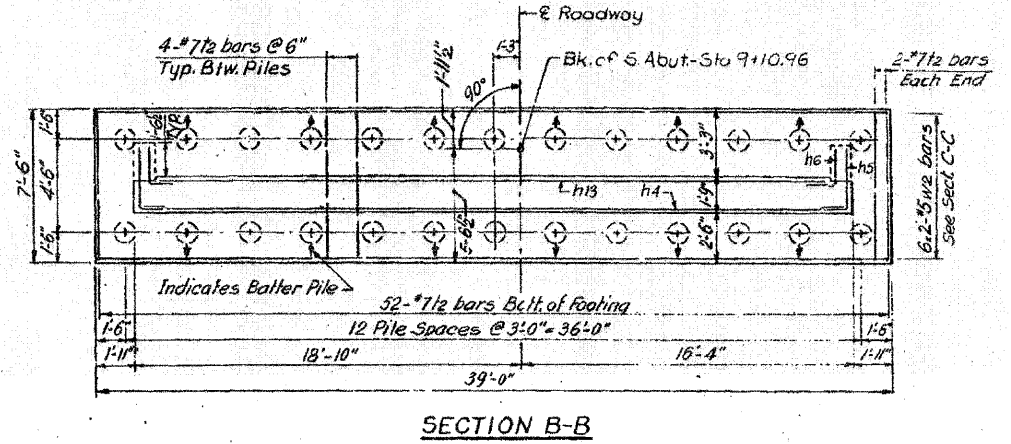
FOR INFORMATION ONLY

ROUTE NO.	SECTION	COUNTY	TOTAL SHEETS	SHEET NO.
F. A. I. - 64	82-1HB	ST. CLAIR	110	89
FED. ROAD DIV. NO. 4	ILLINOIS PROJECT			



KEY TO NOTATION
 N.F. = Near Face
 F.F. = Far Face
 C.F. = Each Face

PILE DATA
 Type: Timber
 Capacity: 23 Ton.
 Est Length: 20 Ft
 No. Required: 26



NOTES:
 In placing reinforcement bars care shall be taken to clear Anchor Bolts.
 Pour steps monolithically with cap.
 For Bar List, Bill of Material and bar bending diagrams see Sheet No. 13
 Work this sheet in conjunction with Sheet No. 13

DESIGNED BY: S.F.
 DRAWN BY: JCS
 CHECKED BY: S.F.

STATE OF ILLINOIS
 DIVISION OF HIGHWAYS
 SOUTH ABUTMENT
 F. A. ROUTE 12 (10TH STREET)
 OVER F. A. I. ROUTE 64
 STATION 58+17.87
 F. A. I. RT. 64 ST. CLAIR CO. SECTION 82-1HB
 H. W. LOCHNER, INC.
 ENGINEERS
 CHICAGO, ILLINOIS

SHEET 12 OF 13

FILE NAME	USER NAME	DESIGNED	REVISION	STATE OF ILLINOIS DEPARTMENT OF TRANSPORTATION	EXISTING BRIDGE PLAN - 10TH STREET	F.A. RTE.	SECTION	COUNTY	TOTAL SHEETS	SHEET NO.
D8T1-082-0150-shr-p1n13.dgn	maronak	PP	-			82-1-3HB, 82-2N, 82-1-12RS	ST. CLAIR	352	293	
SCALE: NONE SHEET NO. 13 OF 19 SHEETS STA. TO STA.										
PLOT SCALE = 480,000 / ft. PLOT DATE = MAR. 31, 2011 DATE 03/31/2011 • 9166/9180/9213/9214 CONTRACT NO. 76C51 FED. ROAD DIST. NO. ILLINOIS FED. AID PROJECT										