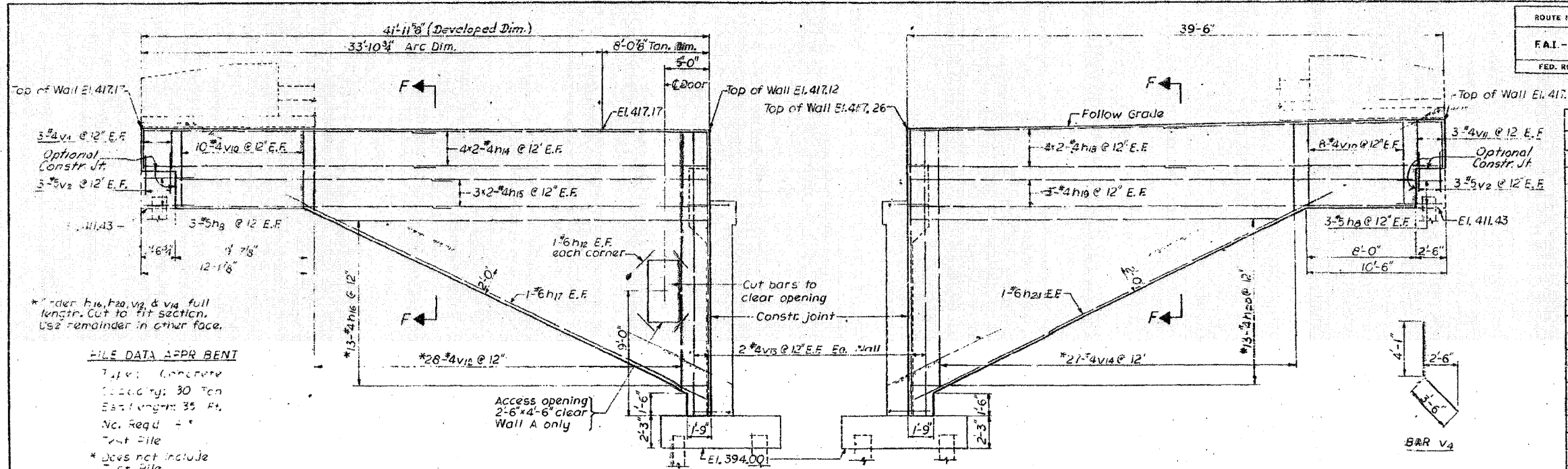


FOR INFORMATION ONLY

ROUTE NO.	SECTION	COUNTY	TOTAL SHEETS	SHEET NO.
FAI-64	82-1HB	ST. CLAIR	110	92
FED. ROAD DIV. NO. 4		ILLINOIS PROJECT		

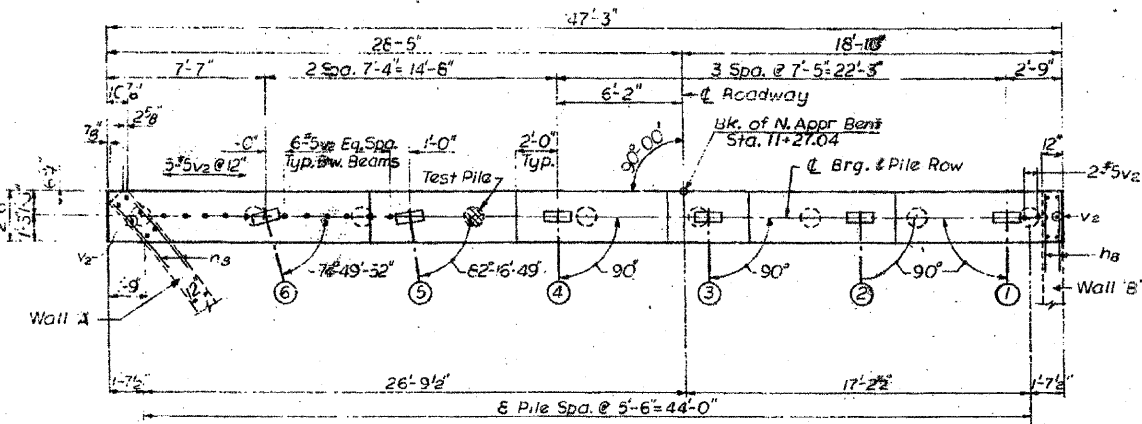
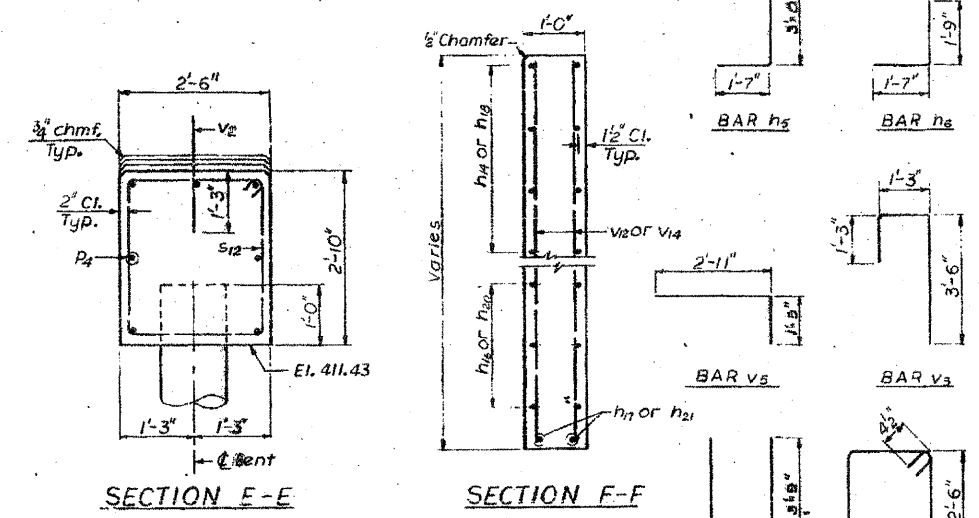
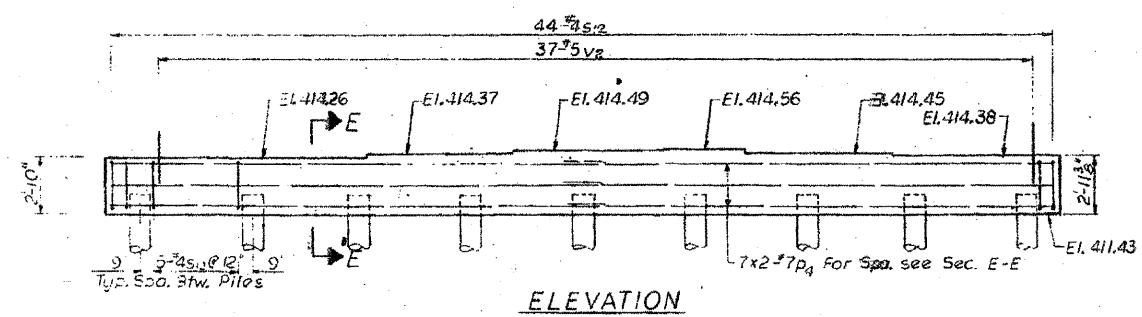


* Order h16, h20, v2 & v4 full length. Cut to fit section. Use remainder in other face.

PILE DATA APPROX BENT

Typ. Concrete
 30 Ton
 Est. Length 35 Ft.
 No. Req'd = 4
 Test Pile
 * Does not include Test Pile.

Bar	No.	Size	Length	Shape
h1	24	#5	34'-10"	
h5	32	#5	4'-7"	
h6	32	#5	3'-4"	
h8	12	#5	3'-7"	
h12	8	#6	3'-0"	
h13	16	#5	32'-10"	
h14	16	#5	21'-6"	
h15	12	#4	20'-4"	
h16	13	#4	30'-6"	
h17	10	#6	34'-6"	
h18	10	#4	20'-3"	
h19	6	#4	36'-8"	
h20	13	#4	29'-6"	
h21	2	#6	34'-0"	
h2	36	#6	9'-0"	
p4	14	#7	24'-10"	
s12	44	#4	10'-1"	
t2	52	#7	7'-2"	
v2	77	#5	2'-6"	
v3	34	#5	6'-0"	
v4	34	#5	7'-7"	
v5	36	#5	4'-4"	
v10	36	#4	5'-7"	
v11	12	#4	2'-9"	
v12	28	#4	24'-0"	
v13	6	#4	20'-7"	
v14	27	#4	25'-0"	
v15	36	#5	15'-2"	
v16	36	#5	13'-7"	
w2	12	#5	20'-0"	
Item	Unit	Total		
Class X Concrete	Cu. Yds.	113.6		
Reinforcement Bars	Lbs.	8840		
Concrete Piles	Lin. Ft.	250		
Timber Piles	Lin. Ft.	364		
Test Pile Concrete	Each	1		



DESIGNED BY: S. E.
 DRAWN BY: V. B.
 CHECKED BY: S. R.

NOTES:
 For Detail of Aluminum Door see Sh. No. 13
 Work this sheet in conjunction with Sh. No. 14

STATE OF ILLINOIS
 DIVISION OF HIGHWAYS
 NORTH ABUTMENT
 WINGWALLS AND APPROACH BENT
 F.A. ROUTE 12 (10TH STREET)
 OVER F.A. ROUTE 64
 STATION 58+17.87
 F.A.I. RT. 64 ST. CLAIR CO. SECTION 82-1HB
 H. W. LOCHNER, INC.
 ENGINEERS
 CHICAGO, ILLINOIS

SHEET
 15 OF 18