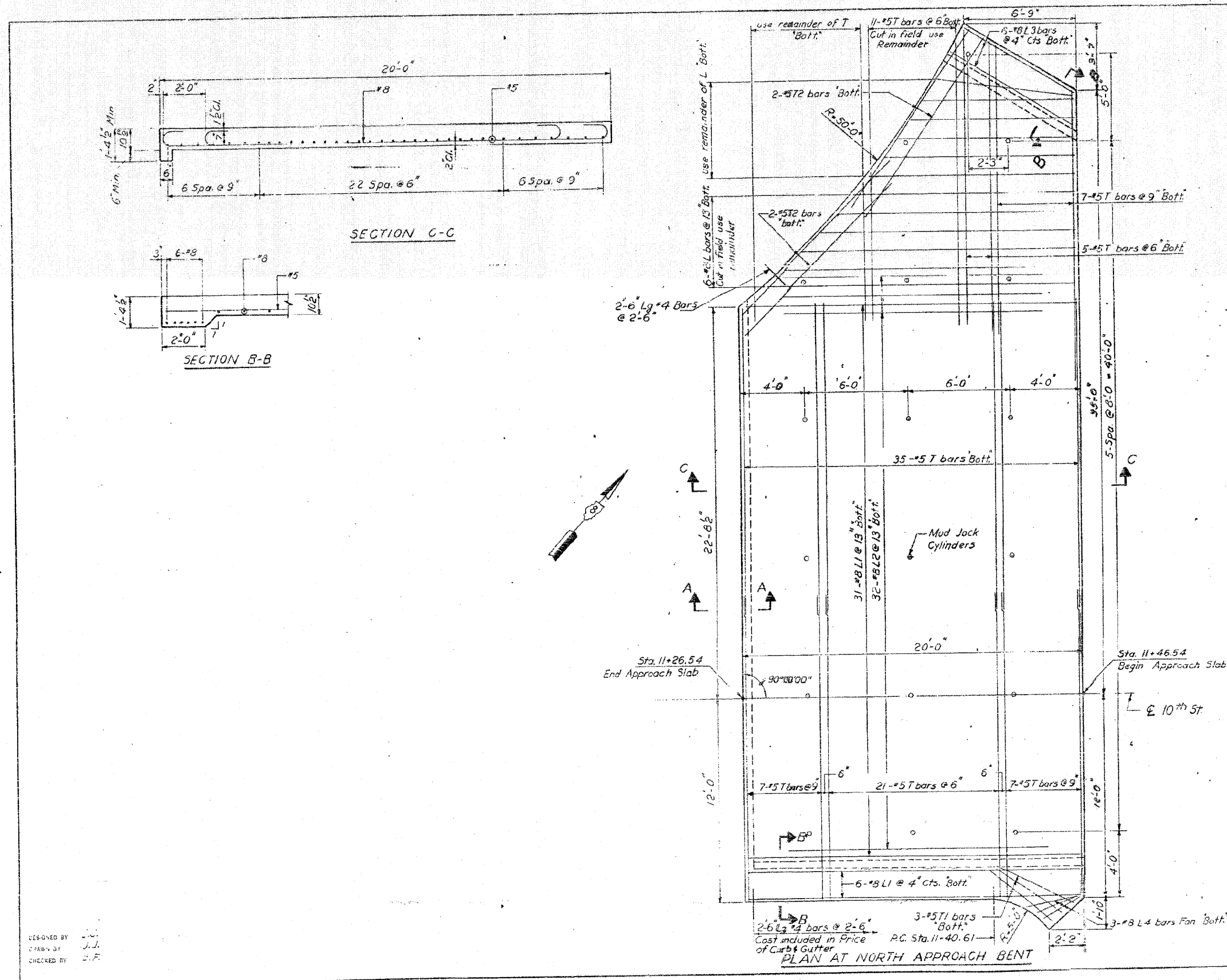


FOR INFORMATION ONLY

ROUTE NO.	SECTION	COUNTY	TOTAL SHEETS	SHEET NO.
F.A.I. - 64	82-1-1	ST. CLAIR	56	29
FED. ROAD DIV. NO. 4		ILLINOIS PROJECT		



BILL OF MATERIAL

NORTH APPROACH SLAB

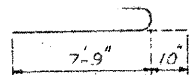
Bar	No.	Size	Length	Shape
L	6	#8	27'-8"	┌
L1	37	#8	21'-4"	┌
L2	32	#8	17'-4"	┌
L3	6	#8	8'-7"	┌
L4	3	#8	2'-9"	┌
T	93	#5	17'-9"	—
T1	3	#5	5'-0"	—
T2	4	#5	12'-3"	—
Pavement 16 1/2'-10 1/2'-16 1/2'		Sq. Yds.	98	
Reinforcement Bars		Lbs.	5980	

SOUTH APPROACH SLAB

Pavement 16 1/2'-10 1/2'-16 1/2'		Sq. Yds.	53.3
Reinforcement Bars		Lbs.	3410

L	10'	26'-0"	10'
L1	10'	19'-8"	10'
L2	10'	15'-8"	10'

Bar L, L1 & L2



Bar L3

Note:
 For Section A-A and all details not shown
 See Standard 1909.
 For South Approach Slab See Standard 1909
 Method I.

STATE OF ILLINOIS

APPROACH SLAB
 10th STREET

NOT TO SCALE

H. W. LOCHNER, INC.
 ENGINEERS
 CHICAGO, ILLINOIS

SHEET OF

DESIGNED BY J.C.
 DRAWN BY J.J.
 CHECKED BY S.F.

PLAN AT NORTH APPROACH BENT

2-6 Lg #4 Bars @ 2'-6"
 3-#5T1 bars Bott.
 6-#3L1 @ 4" Cts. Bott.
 3-#8 L4 bars Fan Bott.
 P.C. Sta. 11+40.61
 Cost included in Price of Curbs & Gutter