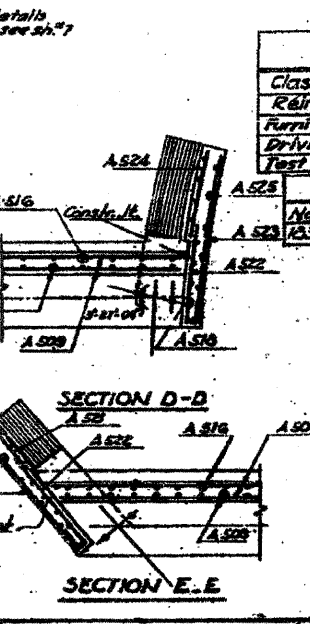
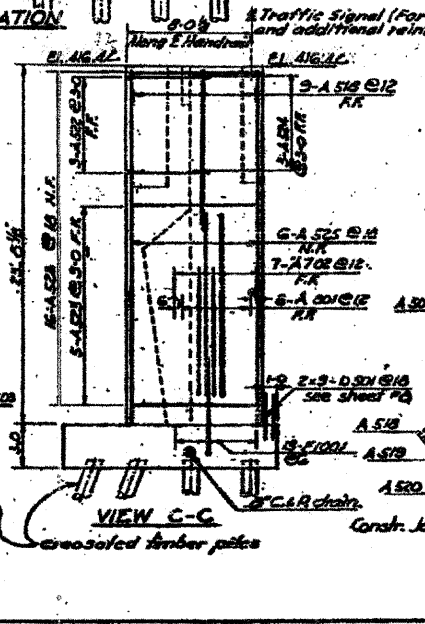
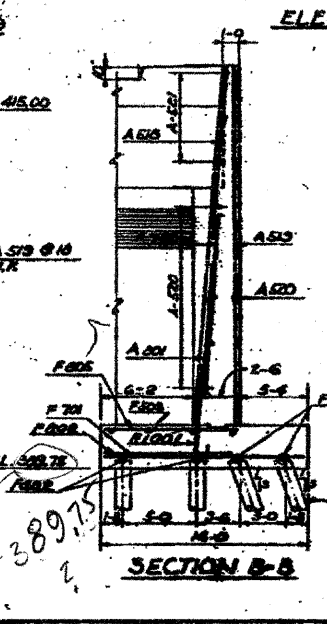
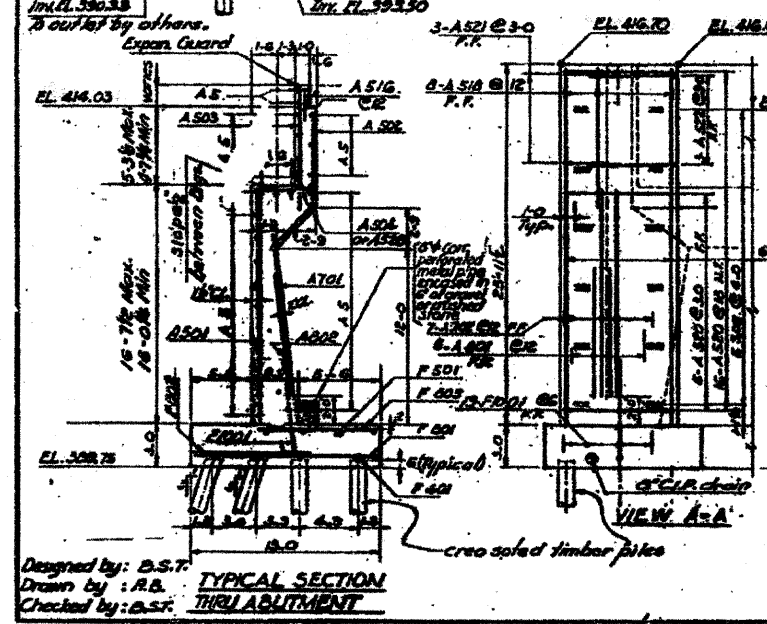
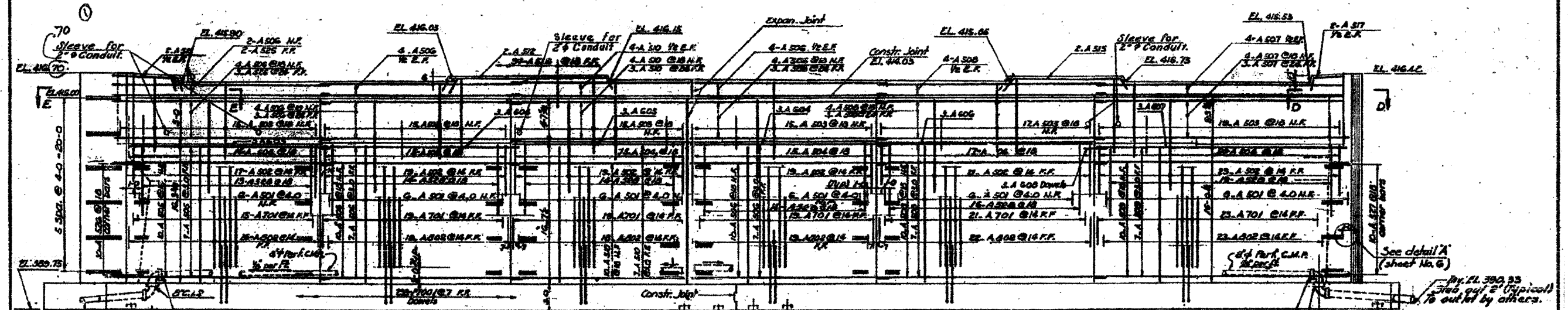
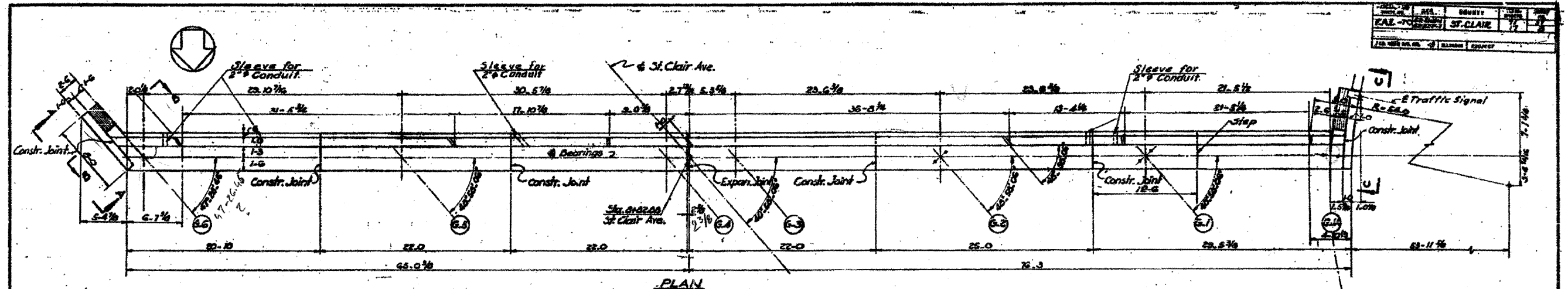


FOR INFORMATION ONLY



BILL OF MATERIAL

Class X concrete	C.Y.	493.1
Reinforcing bars	lbs.	38,640
Furnishing cross-timber piles	L.F.	1041
Driving timber piles	L.F.	1041
Test piles (timber)	lbs.	2

PILE DATA

No.	Capacity	Set Length	Type	Ref. Pile
103	80T	27 ft	Timber	C

BRIDGE SEAT ELEVATIONS

G-1A	408.77
G-1	408.56
G-2	408.16
G-3	408.38
G-4	408.38
G-5	408.72
G-6	408.03

STATE OF ILLINOIS
DEPARTMENT OF PUBLIC WORKS & BLDGS.
DIVISION OF HIGHWAYS
&
CITY OF EAST ST. LOUIS
EAST ST. LOUIS EXPRESSWAY
ST. CLAIR AVE. OVER EAST SOUND EXPRESSWAY
AND ROADWAY "B"
SOUTH ABUTMENT

H.W. LOCHNER, INC.
ENGINEERS
CHICAGO, ILLINOIS

DATE: MAY 1988 SHEET NO. 4

Notes:
• V.C.A. drains to stub out 8" from face of abutment.
• For construction and expansion joint, detail of bearings and detail 2" see sheet No. 6.
• Place reinforcement to clear anchor balls.
• N.A. - Near Face
• F.R. - Far Face
• E.R. - Each Face