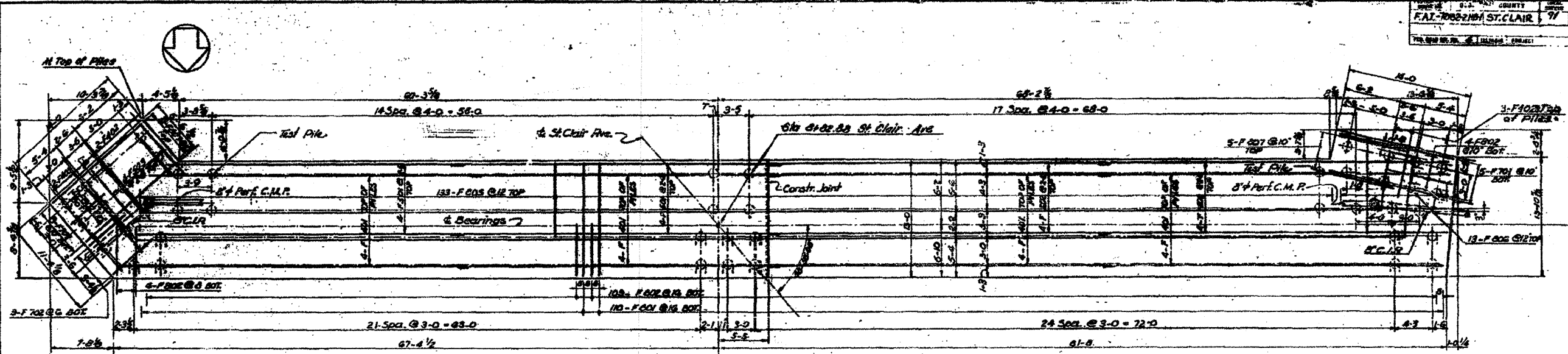


FOR INFORMATION ONLY

STATE OF ILLINOIS COUNTY ST. CLAIR
 F.A. 7662-1-3H/ ST. CLAIR 97 38
 THE GREAT BRIDGE PROJECT



SOUTH EAST WINGWALL BAR SCHEDULE

Mark	No. Reqd	Size	Length	Shape
F 401	7	#4	18-6	
F 402	2	#4	10-2	
F 501	7	#5	18-6	
F 502	2	#5	10-2	
F 503	18	#5	5-10	
F 504	19	#5	5-5	
F 505	25	#5	7-0	
F 701	10	#7	6-3	
F 702	10	#7	3-0	
F 703	30	#7	6-7	
F 704	19	#7	5-5	
F 801	18	#8	8-7	
F 901	NOT USED			
F 902	10	#9	8-3	
F 903	11	#9	13-2	
F 904	30	#9	6-7	
F 905	4	#5	3-8	
F 907	20	#5	4-9	
F 908	16	#5	6-0	
W 201	15	#5	10-9	
W 202	1		29-6	
W 203			15-10	
W 204			9-11	
W 205	1		6-2	
W 206	6		20-8	
W 207	3		6-0	
W 208	1		5-0	
W 209	4		18-8	
W 210	6		18-2	
W 211	11		31-3	
W 212	6		23-2	
W 213	NOT USED			
W 214	10		2-5	
W 215	1	#5	15-0	
W 216	15	#6	7-3	
W 217	15	#8	7-2	
W 218	15	#8	11-9	

NORTH EAST WINGWALL BAR SCHEDULE

Mark	No. Reqd	Size	Length	Shape
F 401	3	#4	10-8	
F 402	2	#4	13-8	
F 403	3	#4	11-0	
F 501	4	#5	10-8	
F 502	2	#5	13-8	
F 503	29	#5	6-0	
F 504	16	#5	5-10	
F 505	18	#5	7-4	
F 506	3	#5	11-8	
F 701	7	#7	6-3	
F 702	8	#7	9-8	
F 703	22	#7	6-7	
F 704	14	#7	5-5	
F 801	12	#8	8-3	
F 901	NOT USED			
F 902	7	#9	7-8	
F 903	8	#9	12-2	
F 904	20	#9	6-7	
F 905	2	#5	3-0	
F 906	20	#5	4-0	
F 907	NOT USED			
F 910	0	#5	18-2	
W 201	10	#5	10-8	
W 202	5		20-8	
W 203	14		14-7	
W 204	17		9-11	
W 205	6		6-2	
W 206	3		18-8	
W 207	3		3-6	
W 208	5		10-8	
W 209	11		22-3	
W 210	6		13-8	
W 211	1		15-0	
W 212	6		10-8	
W 213	NOT USED			
W 214	10	#5	2-6	
W 215	11	#6	7-3	
W 216	10	#7	6-5	
W 217	10	#7	10-0	

NORTH WEST WINGWALL BAR SCHEDULE

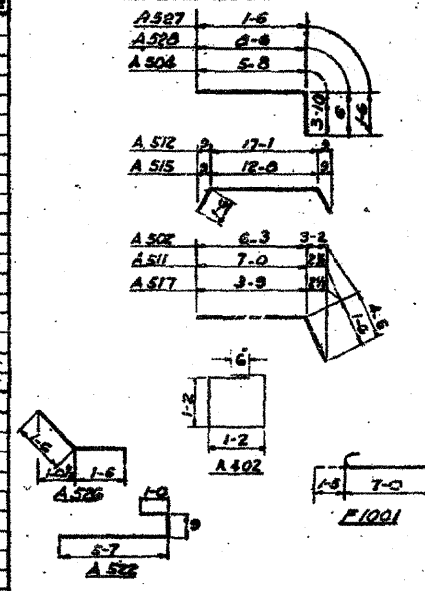
Mark	No. Reqd	Size	Length	Shape
F 401	3	#4	10-8	
F 402	2	#4	13-8	
F 403	3	#4	11-0	
F 501	4	#5	10-8	
F 502	2	#5	13-8	
F 503	15	#5	6-2	
F 504	14	#5	5-10	
F 505	18	#5	7-4	
F 506	3	#5	11-8	
F 701	7	#7	6-0	
F 702	6	#7	9-8	
F 703	22	#7	6-7	
F 704	14	#7	5-5	
F 801	12	#8	7-6	
F 901	NOT USED			
F 902	7	#9	7-8	
F 903	8	#9	12-2	
F 904	20	#9	6-7	
F 905	4	#5	3-0	
F 906	20	#5	4-3	
F 907	NOT USED			
F 910	16	#5	5-3	
F 911	4	#5	18-2	
W 201	10	#5	9-6	
W 202	4		20-8	
W 203	14		18-2	
W 204	17		10-9	
W 205	6		6-2	
W 206	3		18-8	
W 207	3		3-6	
W 208	5		9-8	
W 209	11		22-3	
W 210	6		13-8	
W 211	1		15-2	
W 212	6		18-8	
W 213	NOT USED			
W 214	10	#5	8-6	
W 215	11	#6	7-3	
W 216	10	#7	12-0	
W 217	10	#8	8-0	

SOUTH WEST WINGWALL BAR SCHEDULE

Mark	No. Reqd	Size	Length	Shape
F 401	1	#6	16-10	
F 402	1		15-6	
F 403	1		13-10	
F 404	1		25-0	
F 405	2		25-6	
F 406	2	#4	28-0	
F 501	2	#5	16-6	
F 502	2		14-9	
F 503	1		23-6	
F 504	1		27-0	
F 505	1		25-9	
F 506	2		26-9	
F 507	33		6-2	
F 508	26		5-8	
F 509	30	#5	7-8	
F 701	15	#7	6-0	
F 702	16	#7	9-8	
F 703	50	#7	6-7	
F 704	26	#7	5-5	
F 801	18	#8	7-6	
F 901	NOT USED			
F 902	10	#9	7-8	
F 903	10	#9	12-2	
F 904	20	#9	6-7	
F 911	6	#8	3-6	
F 912	20		4-6	
F 913	26		5-0	
F 914	2	#5	12-2	
W 201	4	#4	8-0	
W 202	5	#4	8-2	
W 203	14	#5	9-6	
W 204	5		13-10	
W 205	31		13-2	
W 206	33		10-8	
W 207	4		18-5	
W 208	18		15-5	
W 209	18		26-3	
W 210	18	#5	24-6	
W 211	23	#6	7-3	
W 212	4	#6	10-0	
W 213	18	#7	12-0	
W 214	18	#8	8-0	

FOOTING PLAN

ABUTMENT BAR DIAGRAMS



SOUTH ABUTMENT BAR SCHEDULE

Mark	No. Reqd	Size	Length	Shape	Mark	No. Reqd	Size	Length	Shape
F 401	16	#4	30-0		A 511	2	#5	0-6	
F 402	5	#4	6-0		A 512	2		20-1	
F 403	2	#4	10-6		A 513	NOT USED			
F 501	6	#5	36-9		A 514	NOT USED			
F 502	6	#5	39-0		A 515	2		18-8	
F 503	4	#5	7-0		A 516	94		3-3	
F 504	18	#5	4-0		A 517	2		5-3	
F 505	13	#7	19-8		A 518	17		11-9	
F 506	3	#7	7-6		A 519	6		23-9	
F 507	110	#8	12-8		A 520	21		7-0	
F 508	124		7-8		A 521	3		2-9	
F 509	Not Used				A 522	6		7-4	
F 510	Not Used				A 523	21		4-6	
F 511	189		7-10		A 524	3		4-8	
F 512	13		10-6		A 525	11		25-5	
F 513	13	#8	8-6		A 526	10		3-0	
F 514	259	#10	5-5		A 527	10		3-0	
F 515	38	#5	15-10		A 528	90	#5	9-0	
F 516	118		10-9		A 529	4	#6	10-0	
F 517	96		8-3		A 530	Not Used			
F 518	96		9-6		A 531	3	#6	25-0	
F 519	17		22-0		A 532	6		23-3	
F 520	58		23-3		A 533	3		21-8	
F 521	11		28-3		A 534	3		24-8	
F 522	20		26-3		A 535	3		29-0	
F 523	17		23-0		A 536	3	#5	3-0	
F 524	17		23-0		A 537	116	#7	11-8	
F 525	17		23-0		A 538	14	#7	17-0	
F 526	17		23-0		A 539	12	#8	20-8	
F 527	17		23-0		A 540	17	#8	20-8	
F 528	17		23-0		A 541	4	#4	5-0	
F 529	17		23-0		A 542	6	#4	5-2	

SOUTH EAST WINGWALL BILL OF MATERIAL

Class X concrete	C.Y.	90.0
Reinforcing bars	Lbs.	6,390
Furnishing	Up to 20	L.F. 160
Crossed pile caps	L.F.	675
Driving timber piles	L.F.	838