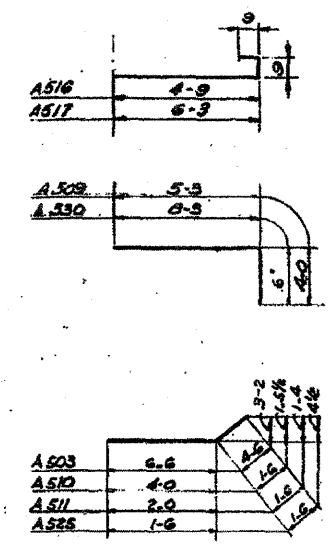
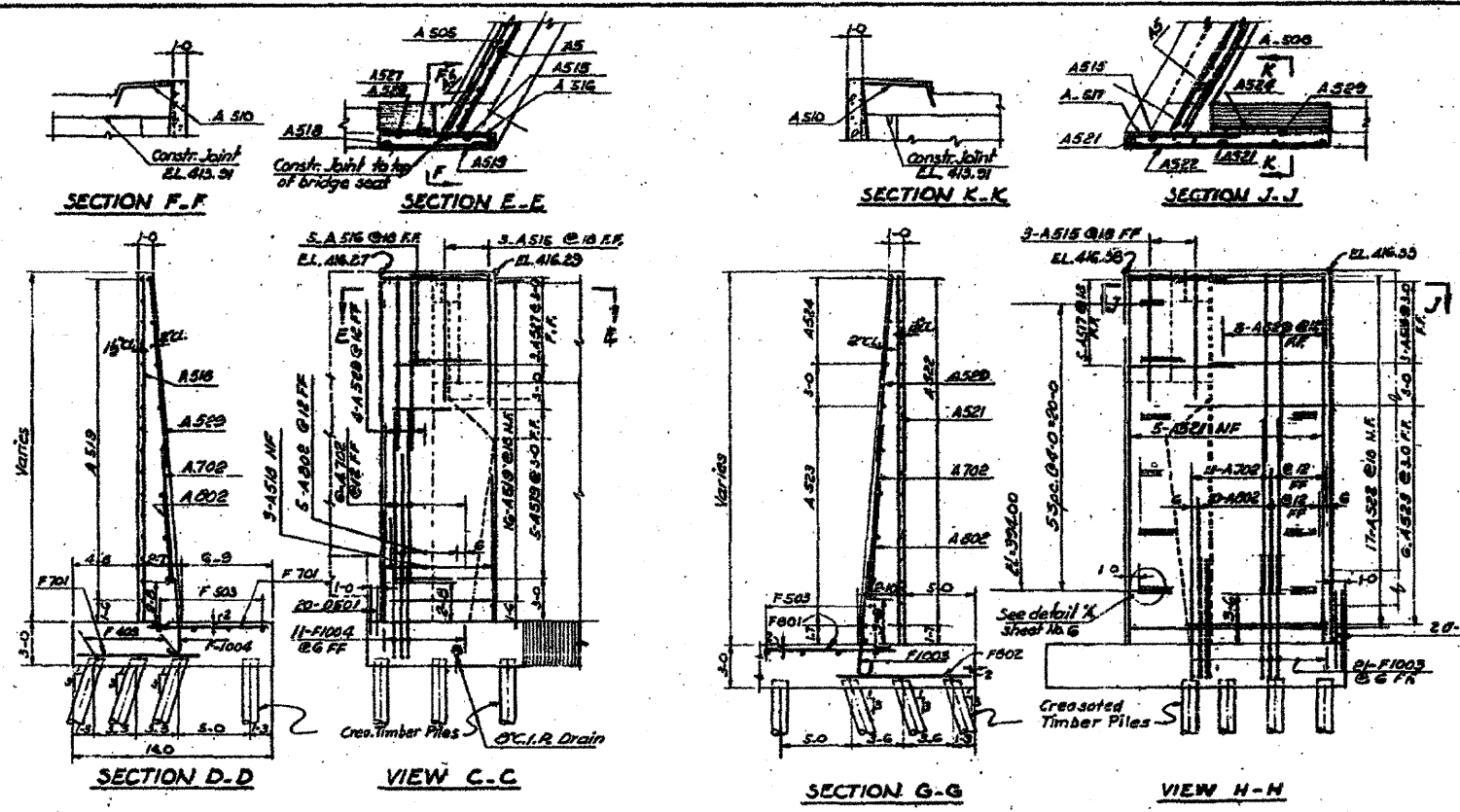
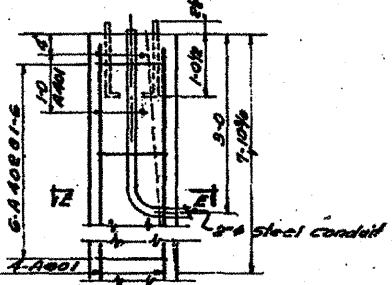
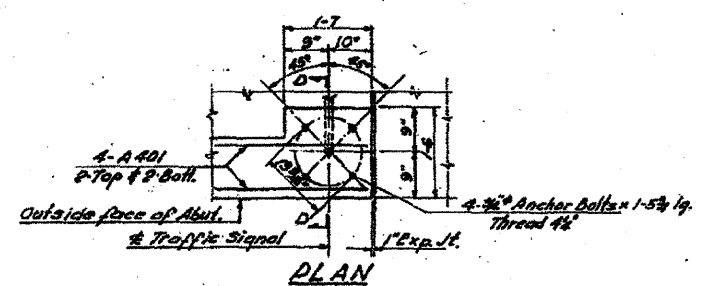


FOR INFORMATION ONLY

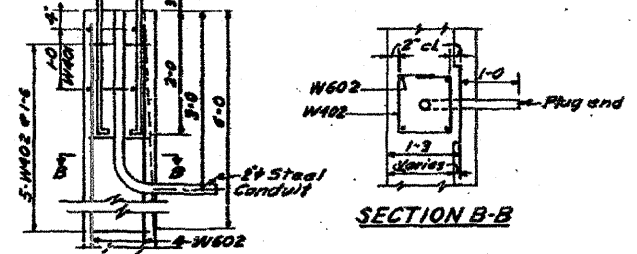
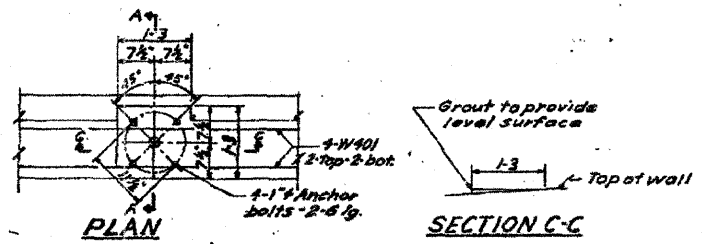
PROJECT NO.	82-1-3HD	SHEET NO.	7
SECTION	82-1-12RS	COUNTY	ST. CLAIR
DATE	9/1	SCALE	40



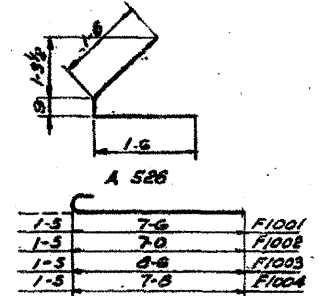
BAR SCHEDULE				
Mark	No. Reqd	Size	Length	Shape
F 401	3	#2	24-0	
F 402	0	#2	23-0	
F 403	6	#2	11-0	
D 501	20	#5	4-3	
F 501	0	#5	22-0	
F 502	8	#5	28-3	
F 503	0	#5	4-6	
D 502	20	#5	7-0	
F 701	73	#7	8-9	
F 702	71	#7	8-8	
F 801	9	#8	10-5	
F 802	7	#8	15-8	
F 901	46	#9	13-8	
F 902	94	#9	8-2	
F1001	96	#10	8-11	
F 1002	72	#10	8-5	
F 1003	21	#10	9-11	
F1004	11	#10	9-1	
A 501	12	#5	15-6	
A 502	14	#5	18-0	
A 503	85	#5	11-0	
A 504	53	#5	7-9	
A 505	37	#5	28-6	
A 506	29	#5	17-8	
A 507	31	#5	24-0	
A 508	12	#5	29-6	
A 509	68	#5	9-8	
A 510	4	#5	8-6	
A 511	4	#5	3-6	
A 512	10	#5	3-6	
A 513	17	#5	6-6	
A 514	5	#5	6-3	
A 515	5	#5	7-9	
A 516	3	#5	24-0	
A 517	21	#5	6-3	
A 518	6	#5	25-8	
A 519	17	#5	14-8	
A 520	6	#5	9-10	
A 521	3	#5	4-6	
A 522	11	#5	3-0	
A 523	12	#5	3-9	
A 524	67	#5	2-6	
A 525	11	#5	26-6	
A 526	12	#5	18-0	
A 527	68	#5	8-9	
A 528	3	#5	29-6	
A 529	3	#5	17-0	
A 530	3	#5	24-0	
A 601	3	#5	28-6	
A 602	3	#5	28-6	
A 603	3	#5	28-6	
A 604	3	#5	28-6	
A 701	48	#7	18-6	
A 702	54	#7	18-0	
A 801	38	#8	7-0	
A 802	68	#8	8-8	



DETAIL AT TRAFFIC CONTROL SIGNAL FOR SOUTH ABUTMENT



DETAIL AT LIGHT STANDARD FOR S.W. WINGWALL



BILL OF MATERIAL			
Class X Concrete	CY	401.5	
Reinforcing Bars	lbs	29,280	
Driving Crossed Piles (20\"/>			

PILE DATA				
Type	Est. Length	Capacity	No. Piles	Test Pile
Timber	27 Ft.	20 T	142	1

Designed by: B.S.T.  
Drawn by: A.B.  
Checked by: B.S.T.

Note: For Bar Schedule See Sheet No. 5

Revised - L. Elamton Changes - 12/10/59 - RL

STATE OF ILLINOIS  
DEPARTMENT OF PUBLIC WORKS & BLDGS.  
DIVISION OF HIGHWAYS  
CITY OF EAST ST. LOUIS  
EAST ST. LOUIS EXPRESSWAY  
ST. CLAIR AVE. OVER EAST BOUND EXPRESSWAY  
AND ROADWAY "N"  
NORTH ABUTMENT DETAILS AND BAR LIST  
H. W. LOCHNER, INC.  
ENGINEERS  
DATE: MAY 1958 CHICAGO, ILLINOIS SHEET NO. 7