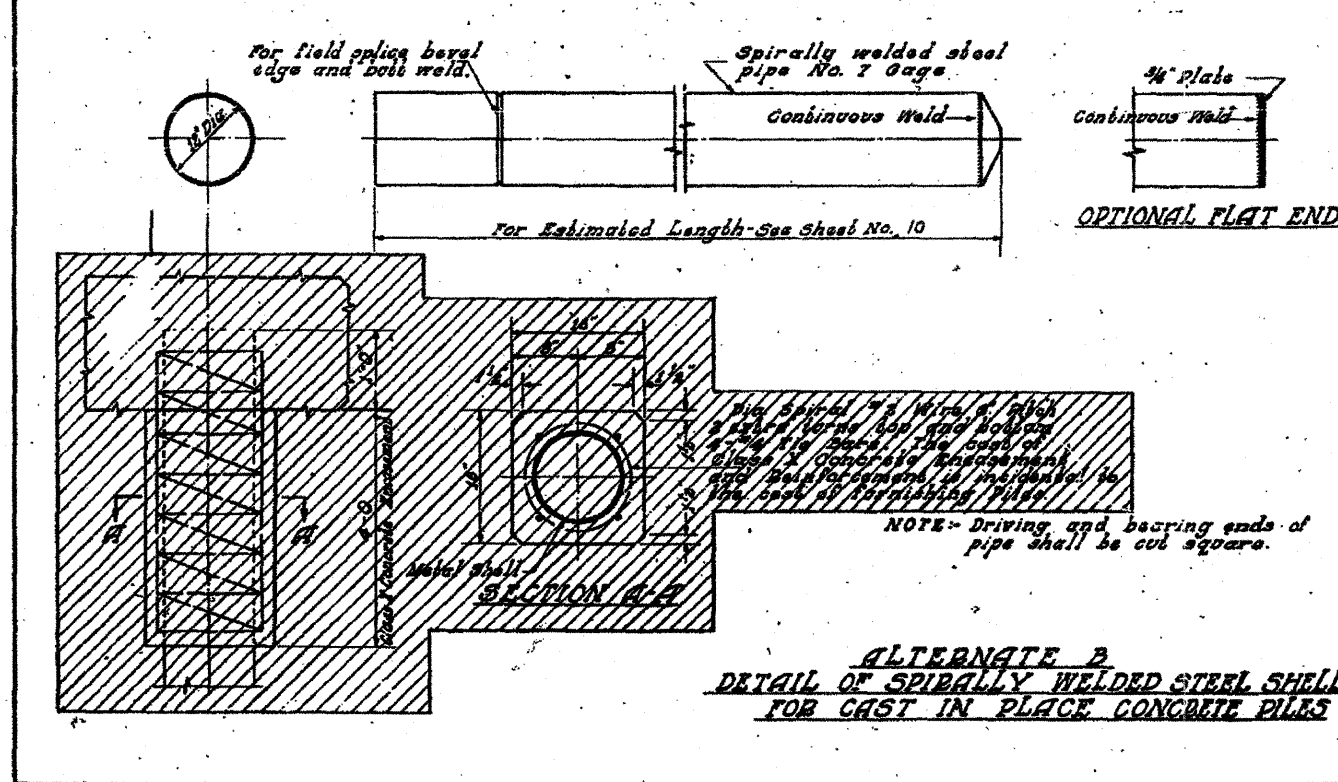
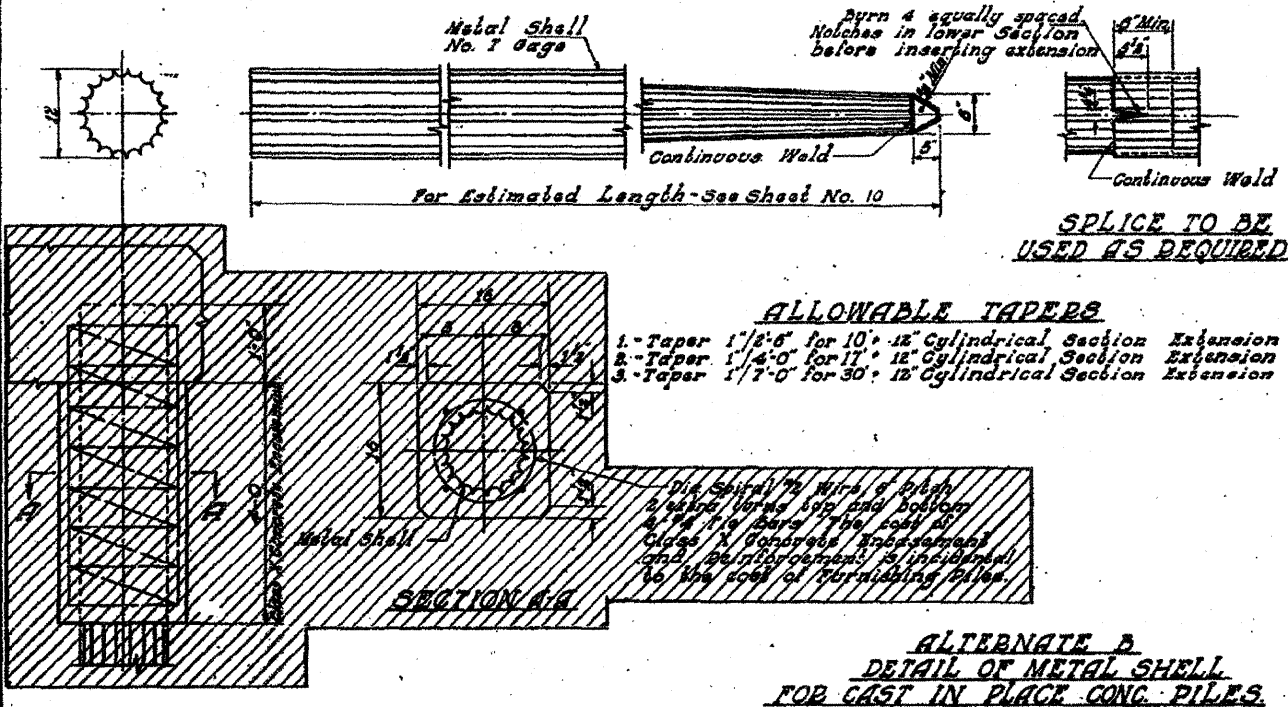
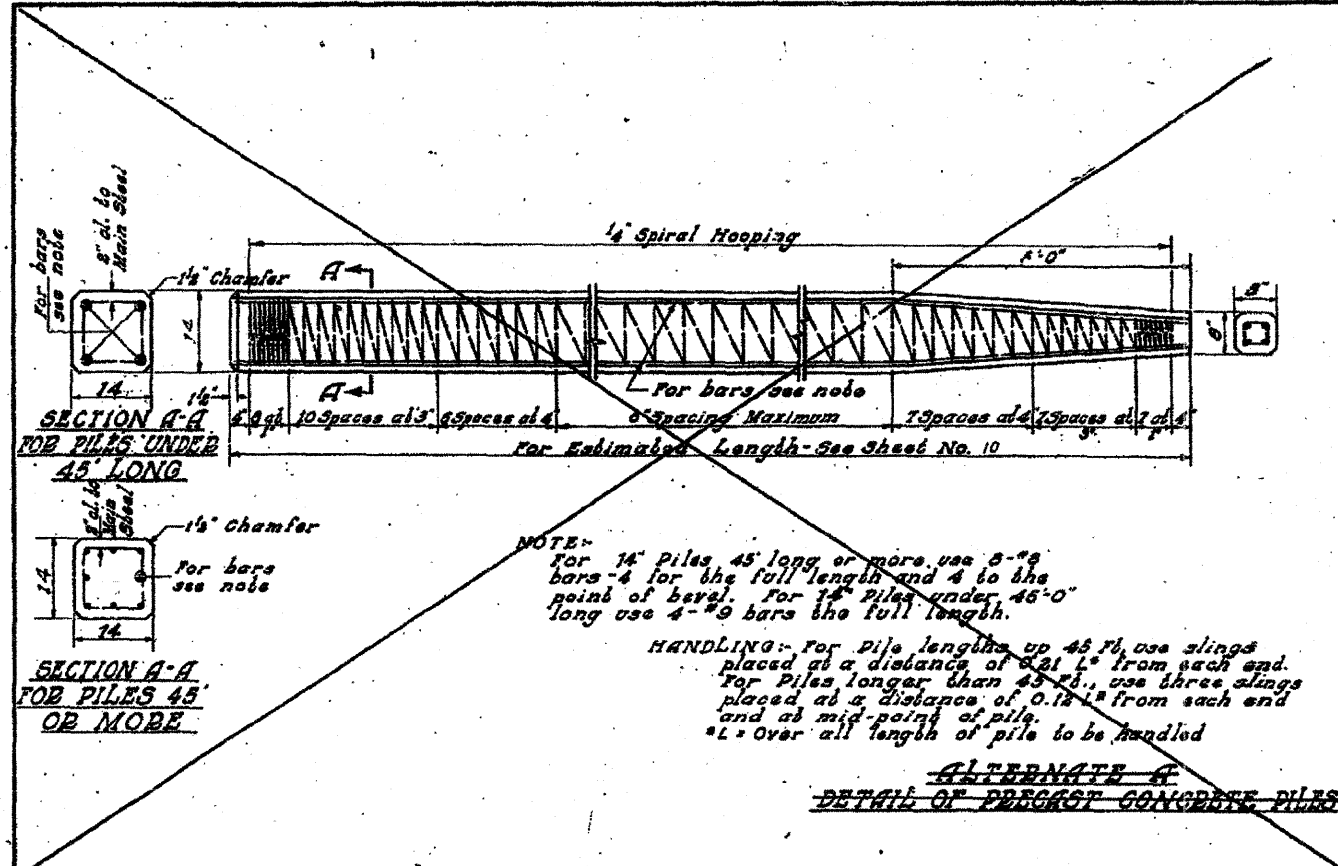


FOR INFORMATION ONLY

PROJECT NO.	SEC.	COUNTY	TOTAL SHEETS	SHEET NO.
FAI-70-02-01-1	ST. CLAIR	91	51	
FED. ROAD DIST. NO. 4 ILLINOIS PROJECT				



STATE OF ILLINOIS
DEPARTMENT OF PUBLIC WORKS & BLDGS.
DIVISION OF HIGHWAYS
CITY OF EAST ST. LOUIS
EAST ST. LOUIS EXPRESSWAY

METAL SHELL PILE DETAILS (BR)
STANDARD 302

H. W. LOCHNER, INC.
ENGINEERS
CHICAGO, ILLINOIS

DATE: MAY 1958 SHEET NO. 18

Revised-Delete P.C. Piles-R.10/59-EL

FILE NAME = 08Tr-082-0099-eh-p1n19.dgn	USER NAME = patslp2	DESIGNED DRAWN PP	REVISED -	STATE OF ILLINOIS DEPARTMENT OF TRANSPORTATION	EXISTING BRIDGE PLAN - ST. CLAIR AVENUE S.N. 082-0099	F.A. RTE.	SECTION	COUNTY	TOTAL SHEETS	SHEET NO.
	PLOT SCALE = 40.000' / in.	CHECKED AB	REVISED -			82-1-3HB, 82-2N, 82-1-12RS	ST. CLAIR	352	3015	
	PLOT DATE = 4/13/2011	DATE 03/31/2011	REVISED -			9166/9180/9213/9214	CONTRACT NO. 76C51			
						FED. ROAD DIST. NO. ILLINOIS FED. AID PROJECT				