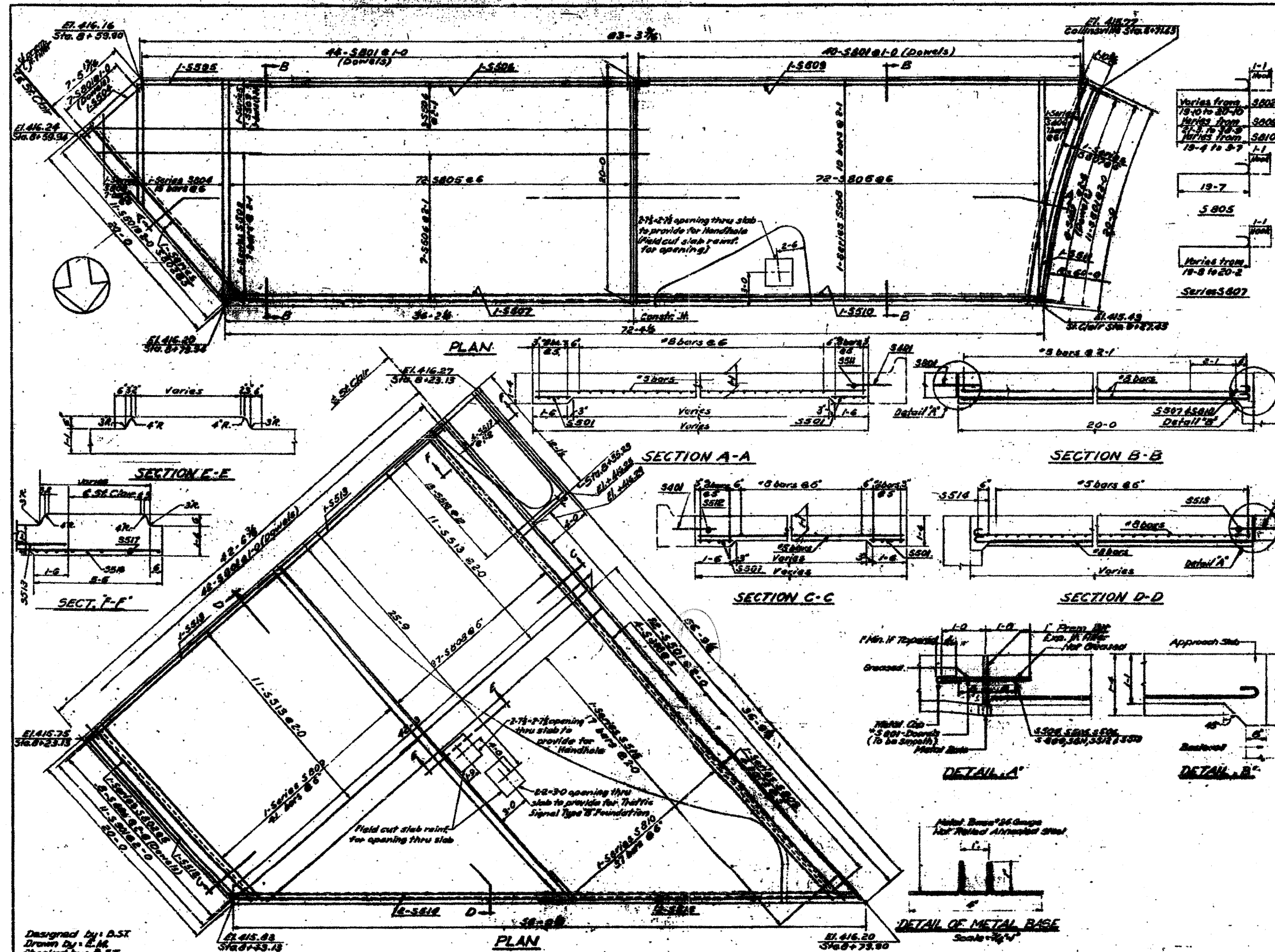


FOR INFORMATION ONLY



FEDERAL-AID ROUTE NO. P.A.S.-70	SECTION ST. CLAIR	COUNTY ST. CLAIR	TOTAL SHEETS 37	SHEET 37
FED. ROAD DIV. NO. 4 ILLINOIS PROJECT				

BAR SCHEDULE				
Bar No.	Bar Size	Length	Shape	
S801	133	2-0		
S802	3-Series of 4	Varies from 19-10 to 20-10 4' incrm.		
S803	1-Series of 7	Varies from 18-3 to 19-2 1-0 incrm.		
S804	1-Series of 15	Varies from 11-1 to 12-3 7' incrm.		
S805	144	20-0		
S806	1-Series of 7	Varies from 8-8 to 13-6 1-0 incrm.		
S807	1-Series of 4	Varies from 20-8 to 21-3 2' incrm.		
S808	41	37-3		
S809	1-Series of 41	Varies from 88-8 to 29-10 55' incrm.		
S810	1-Series of 37	Varies from 8-3 to 20-5 55' incrm.		
S501	55	1-6		
S502	1-Series of 7	Varies from 3-8 to 14-9 1-0 incrm.		
S503	1-Series of 3	Varies from 10-3 to 13-7 3-5 incrm.		
S504	1	7-0		
S505	1	11-0		
S506	11	35-4		
S507	1	38-2		
S508	1-Series of 10	Varies from 98-0 to 33-5 5' incrm.		
S509	1	40-0		
S510	1	35-9		
S511	1	19-10		
S512	1	19-6		
S513	24	21-3		
S514	4	20-4		
S515	1-Series of 17	Varies from 33-6 to 2-10 2-3/4' incrm.		
S516	13	5-6		
S517	6	11-9		
S401	16	2-6		

BILL OF MATERIAL		
P.C. Pavement	366	
Reinforcement Bars	448	21,500

NOTE: PROVIDE TWO JACK COLUMNS AS SHOWN ON STANDARD 1708-2

STATE OF ILLINOIS
DEPARTMENT OF PUBLIC WORKS & BUILDING
DIVISION OF HIGHWAYS
**EAST ST. LOUIS EXPRESSWAY
BRIDGE NO. 5
SOUTH APPROACH SLAB**

H. W. LOCHNER INC.
CHICAGO, ILL.

FILE NAME = DBT-082-0099-sht-pln-28.dgn

USER NAME = pte1p2
DESIGNED -
DRAWN PP
CHECKED AB
PLOT SCALE = 40.000' / in.
PLOT DATE = 4/13/2011

DESIGNED -
DRAWN PP
CHECKED AB
DATE 03/31/2011

REVISED -
REVISED -
REVISED -
REVISED -

STATE OF ILLINOIS
DEPARTMENT OF TRANSPORTATION

EXISTING BRIDGE PLAN - ST. CLAIR AVENUE
S.N. 082-0099

SCALE: NONE SHEET NO. 20 OF 20 SHEETS STA. TO STA.

F.A. RTE.	SECTION	COUNTY	TOTAL SHEETS	SHEET NO.
	82-1-3HB, 82-2N, 82-1-12RS	ST. CLAIR	352	301T
	9166/9180/9213/9214			CONTRACT NO. 76C51
FED. ROAD DIST. NO. [ILLINOIS] FED. AID PROJECT				