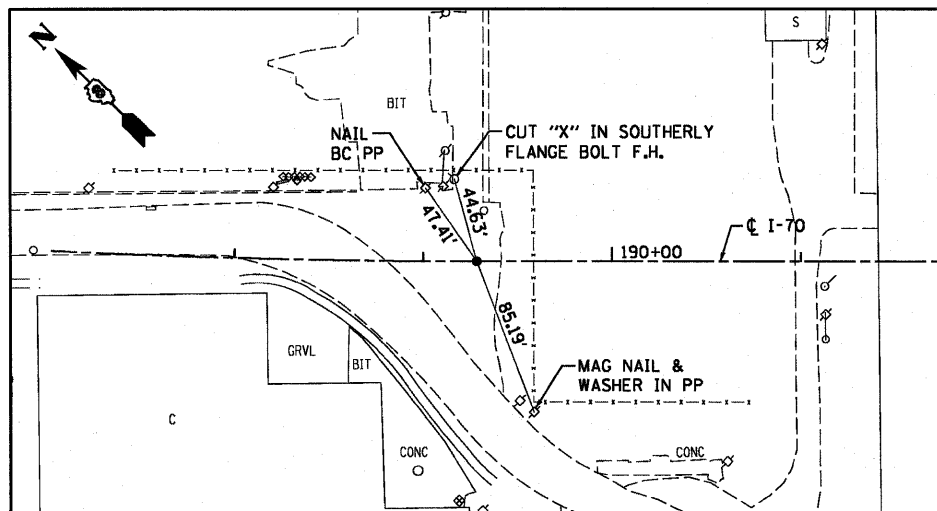
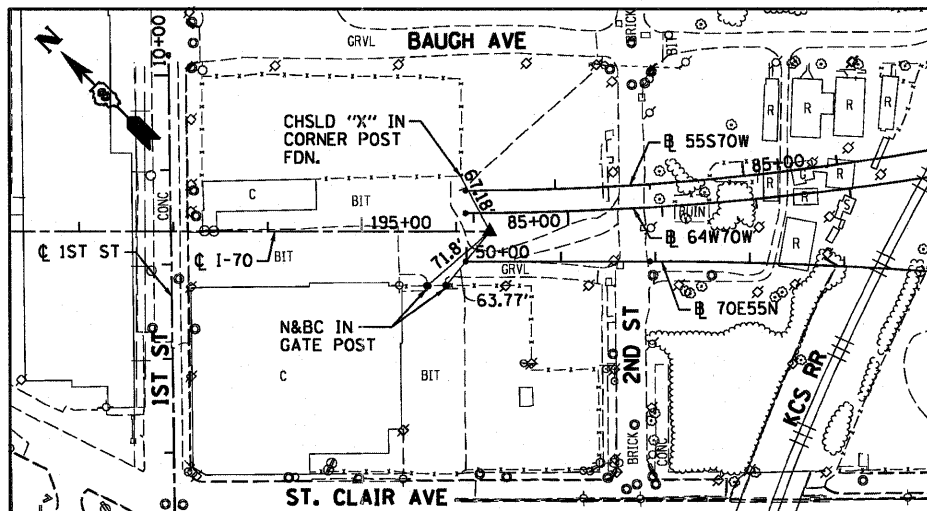


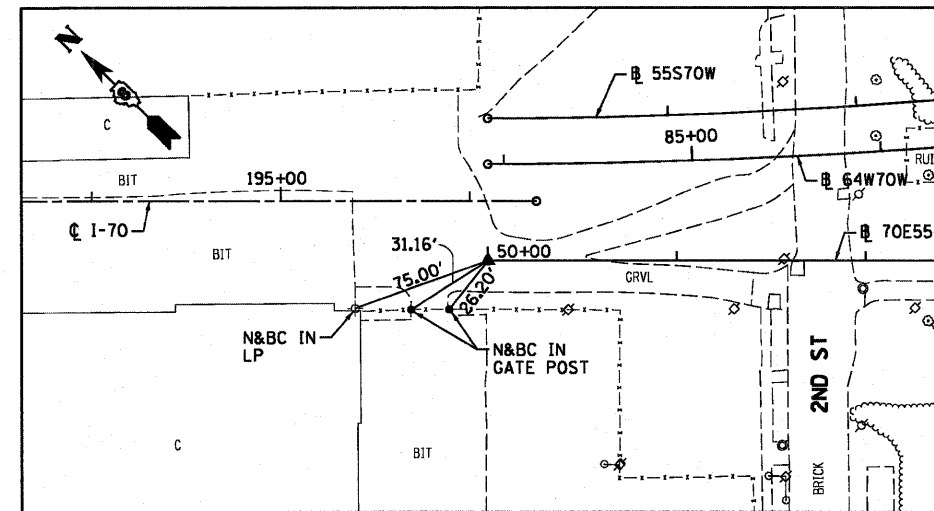
I-70  
PT STA 189+28.42  
COTTON SPINALE INSIDE CHSLD "X" IN BIT



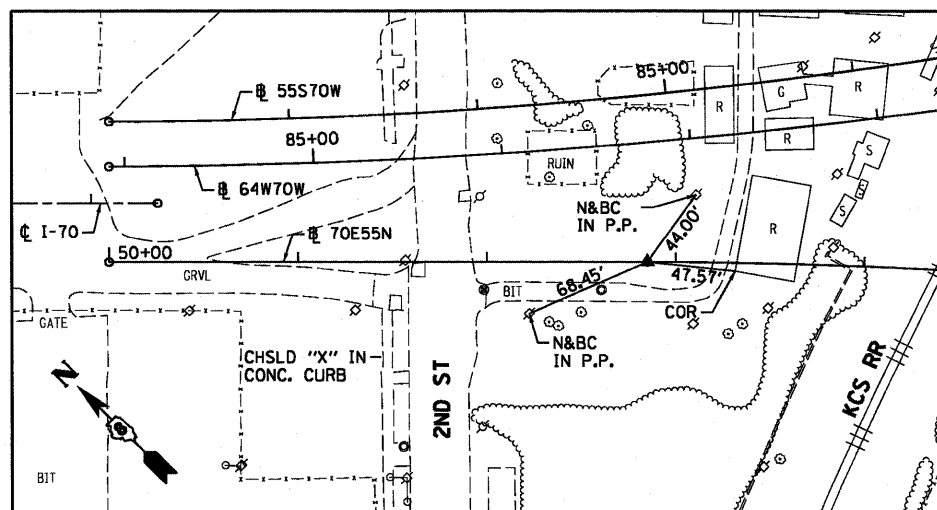
I-70  
POT STA 196+35.37  
SET 5/8" REBAR W/REDCAP FLUSH W/GR



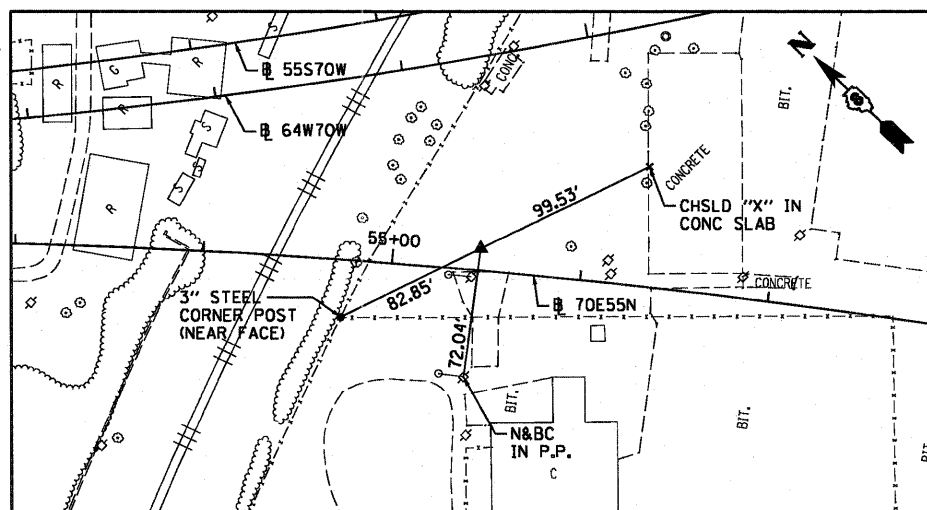
70E55N  
POT STA 50+00.00  
SET MAG NAIL IN BIT



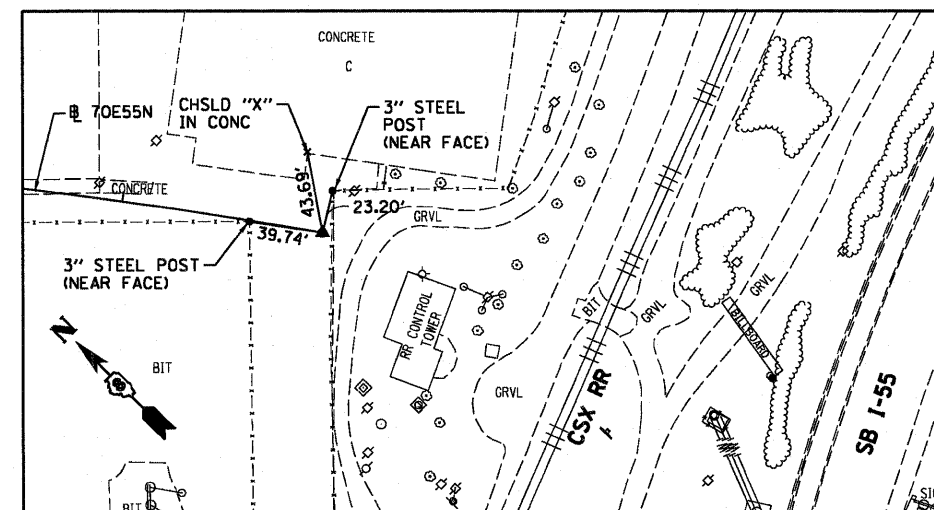
70E55N  
PC STA 52+85.08  
5/8" I. PIN W/YELLOW CAP



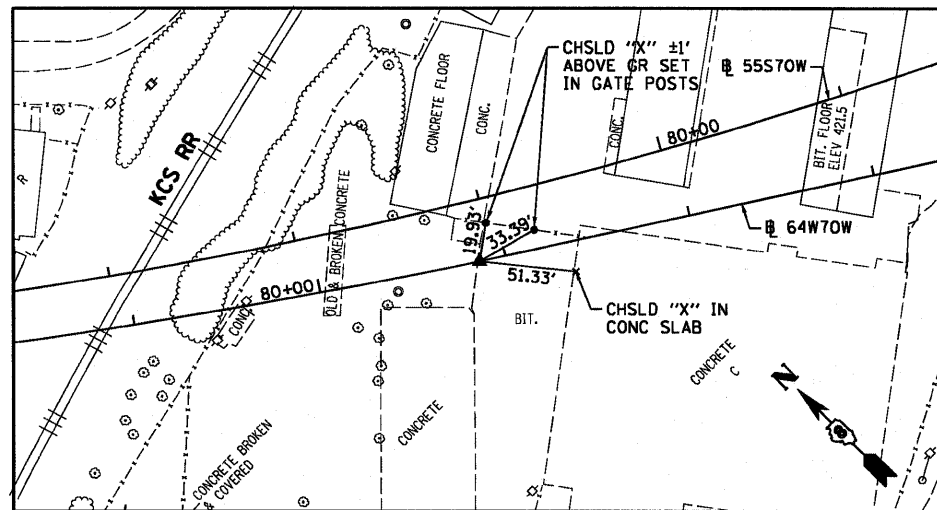
70E55N  
PI STA 55+46.88  
5/8" I. PIN W/YELLOW CAP



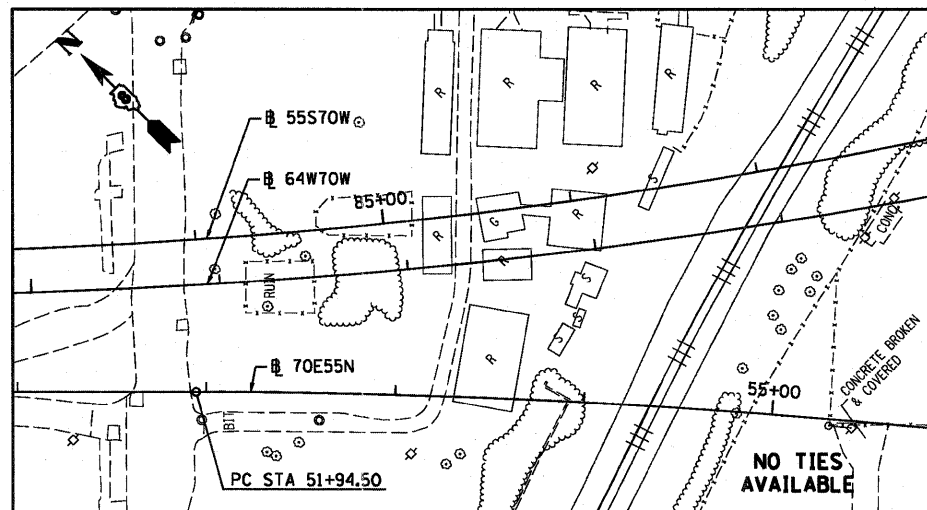
70E55N  
PT STA 58+07.32  
SET MAG NAIL IN BIT LOT



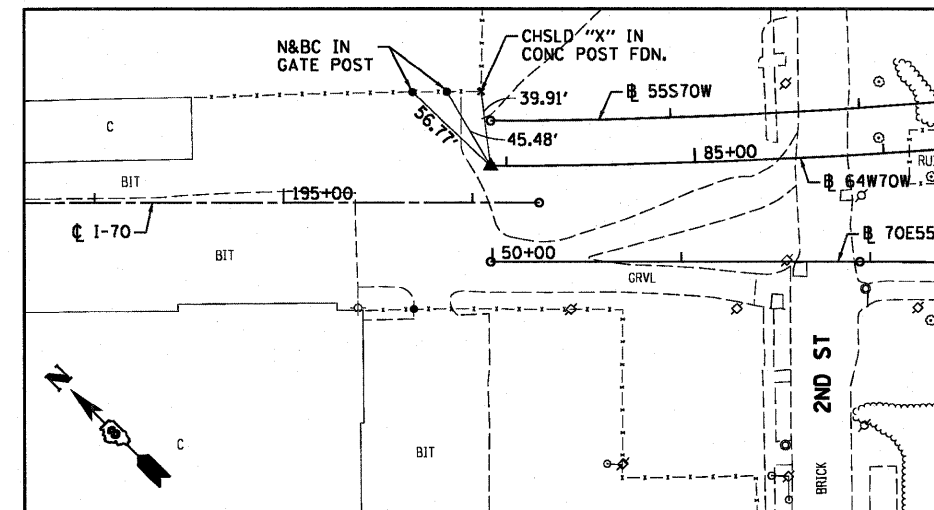
70E55N  
PC STA 60+72.28  
SET 5/8" REBAR W/RED CAP FLUSH W/GR



70E55N  
PI STA 55+46.88



70E55N  
PT STA 77+49.99  
SET 5/8" REBAR W/RED CAP FLUSH W/GR



USER NAME = searsb	DESIGNED PHP	REVISED -
DRAWN PHP	CHECKED DBM	REVISED -
PLT SCALE = 100.0000' / 1"	DATE 07-01-11	REVISED -
PLT DATE = 6/30/2011		

STATE OF ILLINOIS  
DEPARTMENT OF TRANSPORTATION

ALIGNMENT, TIES AND BENCHMARKS

SCALE: NONE SHEET NO. 3 OF 5 SHEETS STA. TO STA.

F.A.I. RTE.	SECTION	COUNTY	TOTAL SHEETS	SHEET NO.
64/998	82-1-B-2	ST. CLAIR	399	18
CONTRACT NO. 76C76				
FED. ROAD DIST. NO. (ILLINOIS) FED. AID PROJECT				