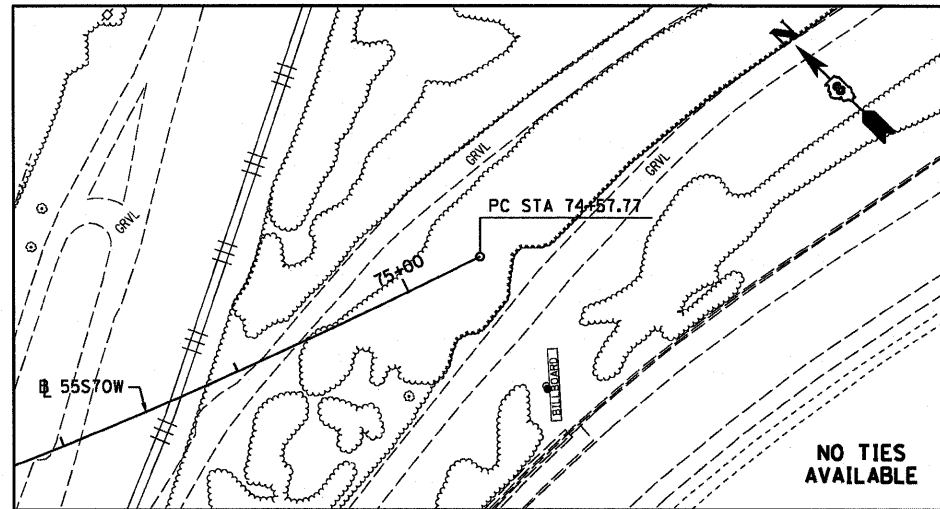
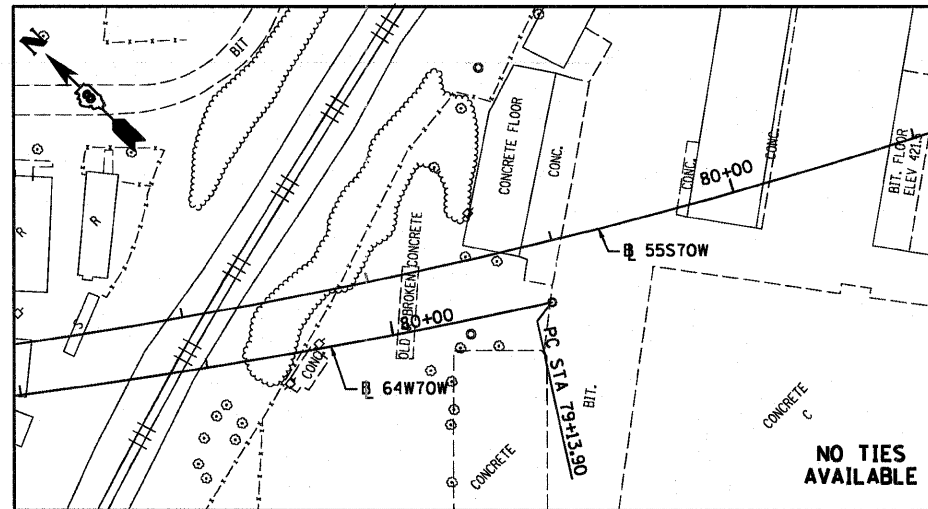


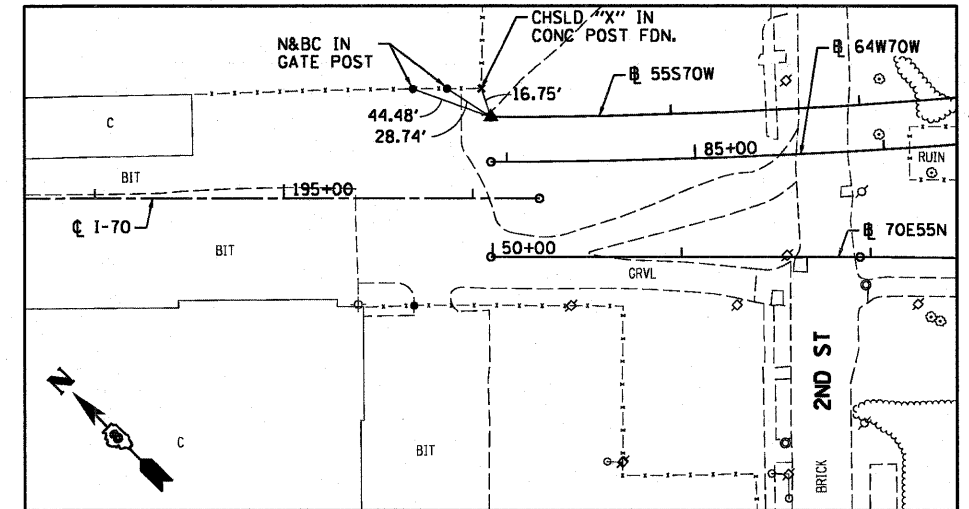
55570W
PC STA 74+57.77
SET 5/8" I PIN W/RED CAP



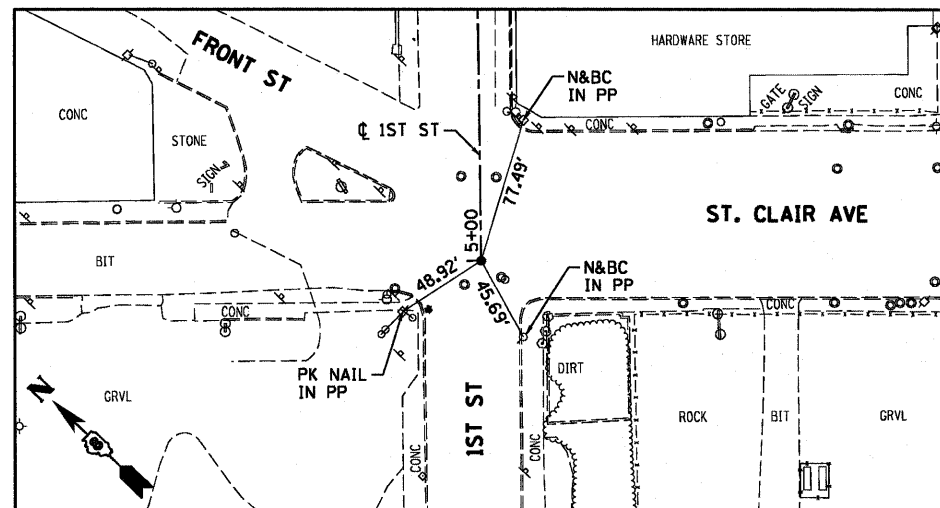
55570W
PI STA 81+39.12



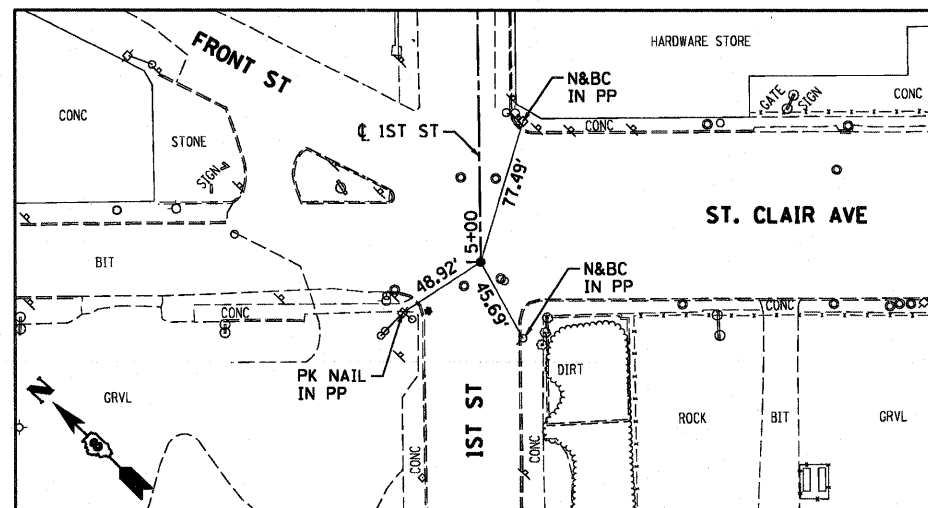
55570W
PT STA 87+95.40
SET 5/8" REBAR W/RED LIN ENG. CAP FLUSH W/GR



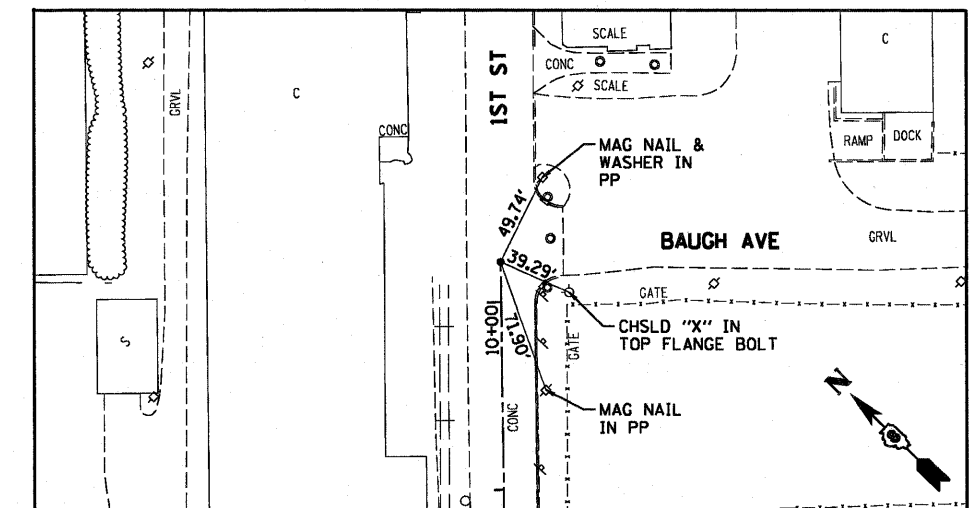
70E64E
POT STA 43+42.86



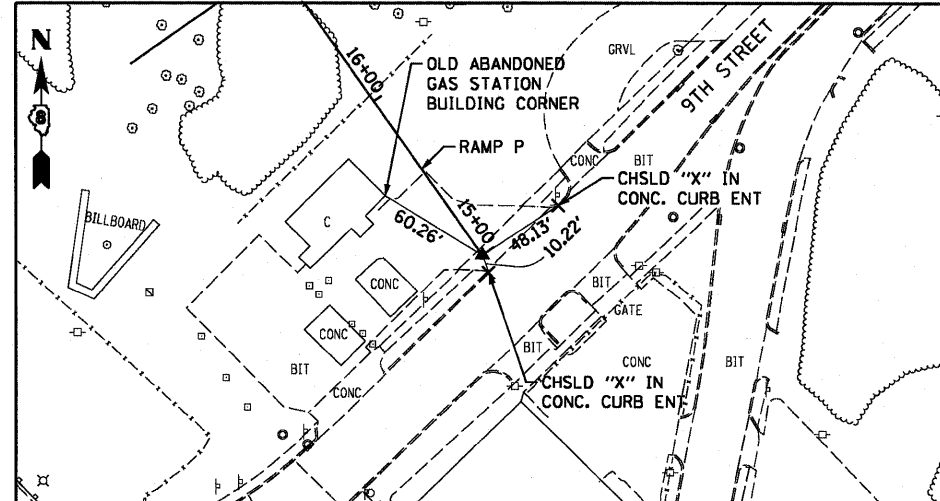
1ST STREET
POT STA 5+00
MAG NAIL INSIDE CHSLD "X"



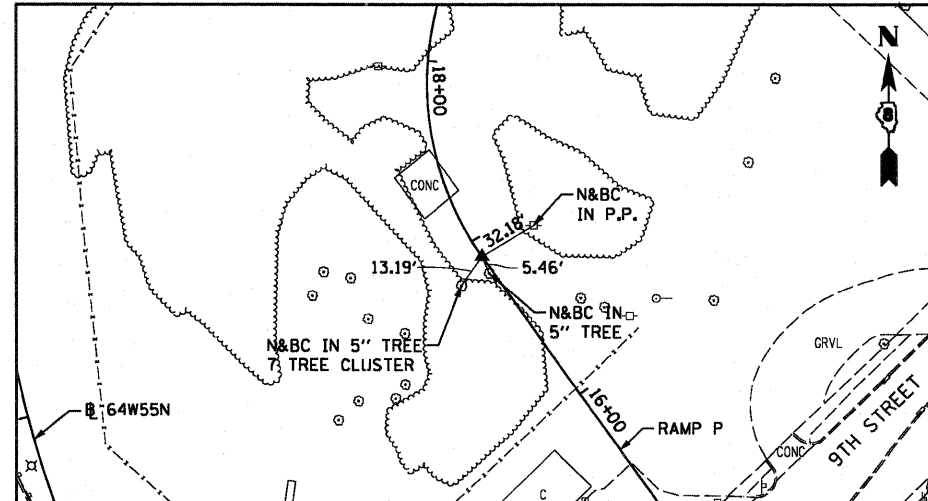
1ST STREET
POT STA 10+21.57
5/8" I.P. IN CONC PAVT



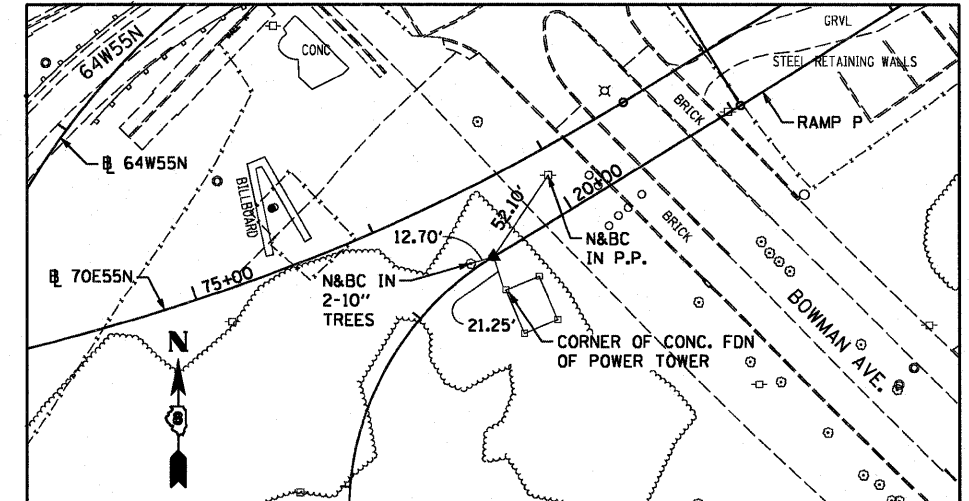
RAMP P
POT STA 15+00 = 520+44.97 (BAUGH)
SET MAG NAIL IN CONC. WITH CHISELLED "+"
(CONTROL POINT MAY NEED TO BE RE-ESTABLISHED DUE TO CONSTRUCTION ACTIVITY.)



RAMP P
PC STA 16+90.04
SET 5/8" REBAR W/RED CAP FLUSH W/GR



RAMP P
PT STA 19+51.32
SET 5/8" REBAR W/RED CAP FLUSH W/GR



USER NAME = eearsb	DESIGNED PHP	REVISED -
PLAT SCALE = 1/2" = 100'	DRAWN PHP	REVISED -
PLAT DATE = 6/30/2011	CHECKED DBM	REVISED -
	DATE 07-01-11	REVISED -

STATE OF ILLINOIS
DEPARTMENT OF TRANSPORTATION

ALIGNMENT, TIES AND BENCHMARKS

SCALE: NONE SHEET NO. 4 OF 5 SHEETS STA. TO STA.

F.A.I. RTE. 64/998	SECTION 82-1-B-2	COUNTY ST. CLAIR	TOTAL SHEETS 399	SHEET NO. 19
FED. ROAD DIST. NO. ILLINOIS FED. AID PROJECT			CONTRACT NO. 76C76	