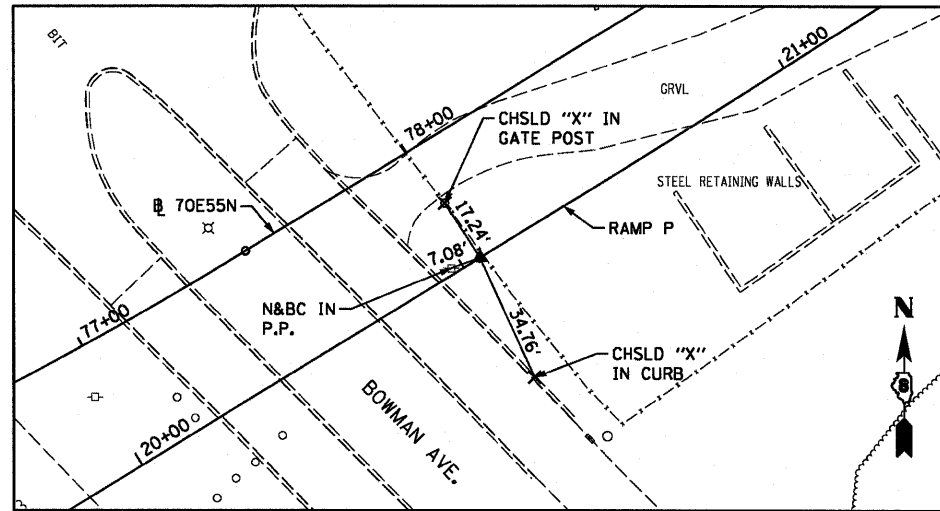


RAMP P  
 PC STA 21+04.96  
 SET 5/8" REBAR W/RED LIN ENG. CAP FLUSH W/GR



USER NAME = searab	DESIGNED PHP	REVISED -
	DRAWN PHP	REVISED -
PLLOT SCALE = 100.0000' / 1in.	CHECKED DBM	REVISED -
PLLOT DATE = 6/30/2011	DATE 07-01-11	REVISED -

STATE OF ILLINOIS  
 DEPARTMENT OF TRANSPORTATION

ALIGNMENT, TIES AND BENCHMARKS

SCALE: NONE SHEET NO. 5 OF 5 SHEETS STA. TO STA.

F.A.I. RTE. 84/998	SECTION 82-1-B-2	COUNTY ST. CLAIR	TOTAL SHEETS 399	SHEET NO. 20
FED. ROAD DIST. NO.		ILLINOIS FED. AID PROJECT CONTRACT NO. 76C76		