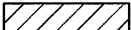



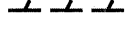




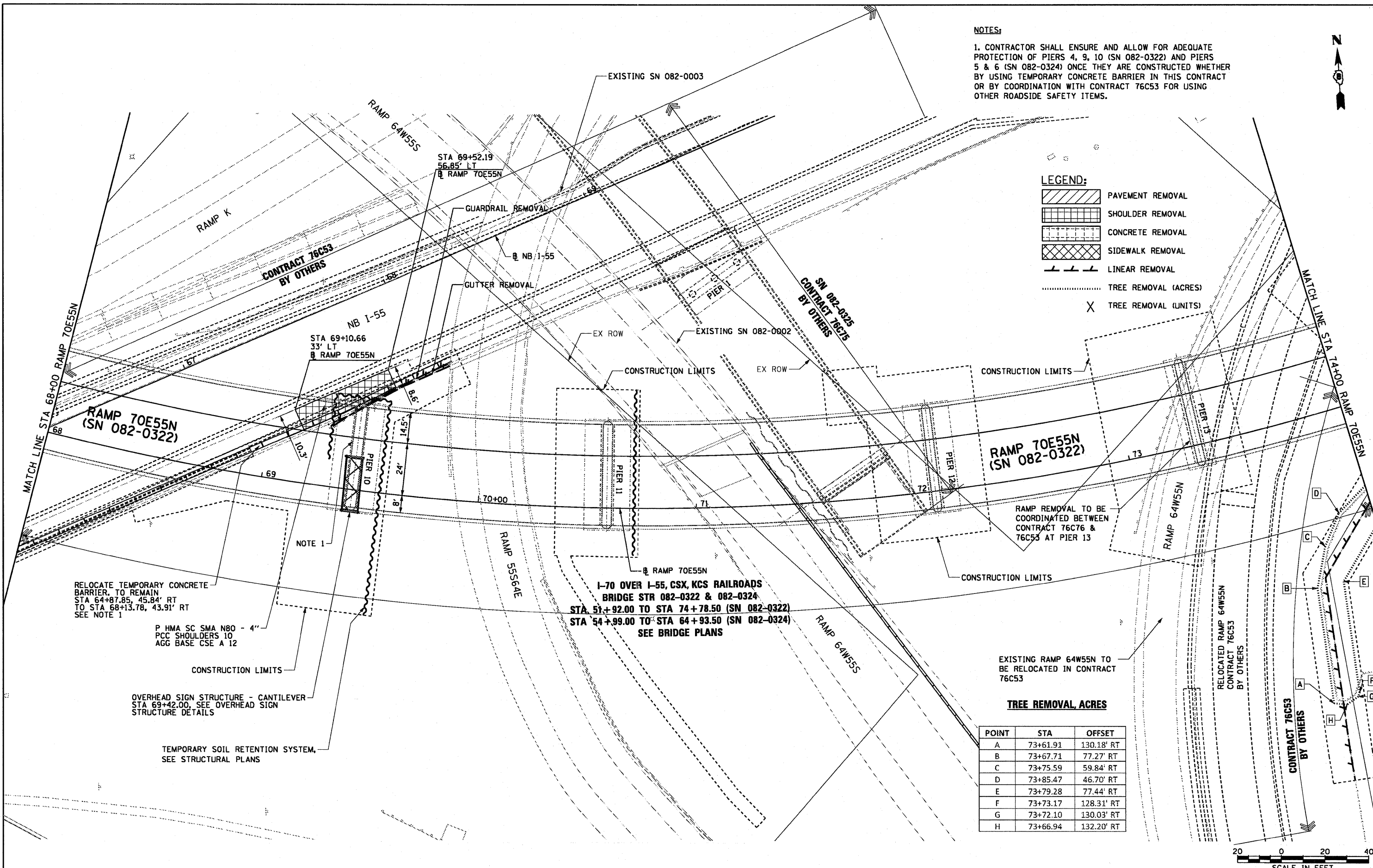
NOTES:

1. CONTRACTOR SHALL ENSURE AND ALLOW FOR ADEQUATE PROTECTION OF PIERS 4, 9, 10 (SN 082-0322) AND PIERS 5 & 6 (SN 082-0324) ONCE THEY ARE CONSTRUCTED WHETHER BY USING TEMPORARY CONCRETE BARRIER IN THIS CONTRACT OR BY COORDINATION WITH CONTRACT 76C53 FOR USING OTHER ROADSIDE SAFETY ITEMS.



LEGEND:

-  PAVEMENT REMOVAL
-  SHOULDER REMOVAL
-  CONCRETE REMOVAL
-  SIDEWALK REMOVAL
-  LINEAR REMOVAL
-  TREE REMOVAL (ACRES)
-  TREE REMOVAL (UNITS)



RELOCATE TEMPORARY CONCRETE BARRIER TO REMAIN STA 64+87.85, 45.84' RT TO STA 68+13.78, 43.91' RT SEE NOTE 1

P HMA SC SMA N80 - 4"
PCC SHOULDERS 10
AGG BASE CSE A 12

OVERHEAD SIGN STRUCTURE - CANTILEVER
STA 69+42.00, SEE OVERHEAD SIGN STRUCTURE DETAILS

TEMPORARY SOIL RETENTION SYSTEM,
SEE STRUCTURAL PLANS

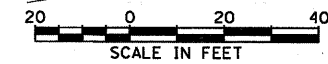
I-70 OVER I-55, CSX, KCS RAILROADS
BRIDGE STR 082-0322 & 082-0324
STA 51+92.00 TO STA 74+78.50 (SN 082-0322)
STA 54+99.00 TO STA 64+93.50 (SN 082-0324)
SEE BRIDGE PLANS

RAMP REMOVAL TO BE COORDINATED BETWEEN CONTRACT 76C76 & 76C53 AT PIER 13

EXISTING RAMP 64W55N TO BE RELOCATED IN CONTRACT 76C53

TREE REMOVAL, ACRES

POINT	STA	OFFSET
A	73+61.91	130.18' RT
B	73+67.71	77.27' RT
C	73+75.59	59.84' RT
D	73+85.47	46.70' RT
E	73+79.28	77.44' RT
F	73+73.17	128.31' RT
G	73+72.10	130.03' RT
H	73+66.94	132.20' RT



USER NAME = sear-sb PLOT SCALE = 40.0000' / in. PLOT DATE = 7/1/2011	DESIGNED OP DRAWN PHP CHECKED DBM DATE 07-01-11	REVISED - REVISED - REVISED - REVISED -	STATE OF ILLINOIS DEPARTMENT OF TRANSPORTATION	ROADWAY PLAN RAMP 70E55N	F.A.I. RTE. 64/998 SECTION 82-1-B-2 COUNTY ST. CLAIR TOTAL SHEETS 399 SHEET NO. 27 CONTRACT NO. 76C76 FED. ROAD DIST. NO. ILLINOIS FED. AID PROJECT
SCALE: 1" = 20' SHEET NO. 5 OF 7 SHEETS STA. 68+00 TO STA. 74+00					