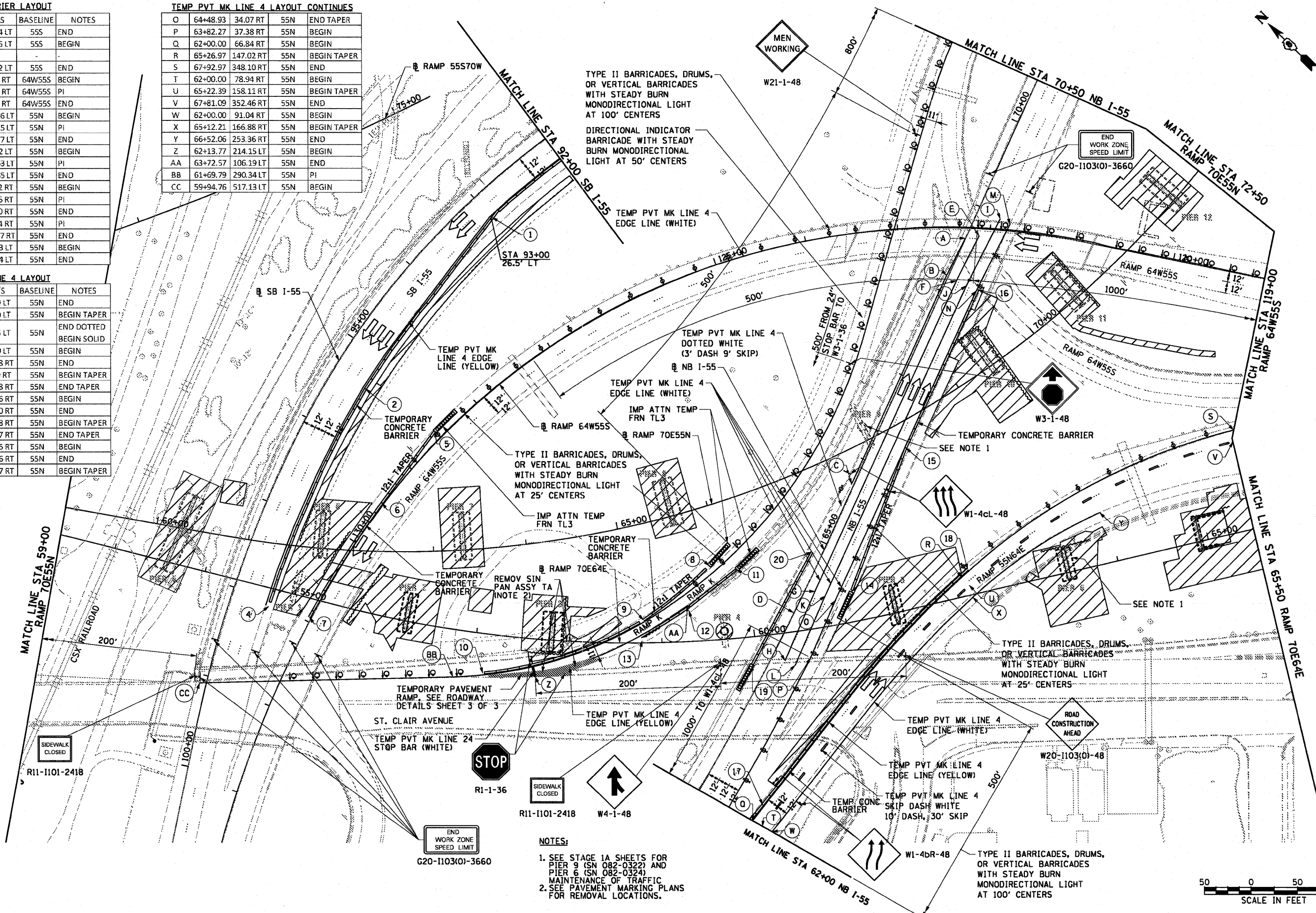


TEMP CONC BARRIER LAYOUT				
POINT	STA	O/S	BASELINE	NOTES
1	93+00.14	28.54 LT	55S	END
2	95+39.95	40.15 LT	55S	BEGIN
3				
4	98+07.89	41.92 LT	55S	END
5	128+53.43	9.36 RT	64W55S	BEGIN
6	129+48.49	1.86 RT	64W55S	PI
7	130+94.99	2.06 RT	64W55S	END
8	64+23.27	104.66 LT	55N	BEGIN
9	63+35.19	141.15 LT	55N	PI
10	61+91.57	264.77 LT	55N	END
11	64+32.93	76.32 LT	55N	BEGIN
12	63+62.24	104.63 LT	55N	PI
13	63+13.71	131.85 LT	55N	END
14	64+64.32	45.62 RT	55N	BEGIN
15	66+29.81	34.56 RT	55N	PI
16	68+17.24	34.90 RT	55N	END
17	62+16.99	67.54 RT	55N	PI
18	65+37.75	149.27 RT	55N	END
19	63+47.28	15.13 LT	55N	BEGIN
20	64+85.31	11.04 LT	55N	END

TEMP PVT MK LINE 4 LAYOUT CONTINUES				
O	STA	O/S	BASELINE	NOTES
P	64+48.93	34.07 RT	55N	END TAPER
Q	63+82.27	37.38 RT	55N	BEGIN
R	62+00.00	66.84 RT	55N	BEGIN
S	65+26.97	147.02 RT	55N	BEGIN TAPER
T	67+92.97	348.10 RT	55N	END
U	65+22.39	158.11 RT	55N	BEGIN TAPER
V	67+81.09	352.46 RT	55N	END
W	62+00.00	91.04 RT	55N	BEGIN
X	65+12.21	166.88 RT	55N	BEGIN TAPER
Y	66+52.06	253.36 RT	55N	END
Z	62+13.77	214.15 LT	55N	BEGIN
AA	63+72.57	106.19 LT	55N	END
BB	61+69.79	290.34 LT	55N	PI
CC	59+94.76	517.13 LT	55N	BEGIN

TEMP PVT MK LINE 4 LAYOUT				
POINT	STA	O/S	BASELINE	NOTES
A	68+62.40	0.19 LT	55N	END
B	68+17.31	2.10 LT	55N	BEGIN TAPER
C	65+70.35	2.54 LT	55N	END DOTTED BEGIN SOLID
D	64+17.50	0.59 LT	55N	BEGIN
E	68+70.78	12.18 RT	55N	END
F	68+17.28	9.90 RT	55N	BEGIN TAPER
G	64+48.23	10.08 RT	55N	END TAPER
H	63+67.39	14.26 RT	55N	BEGIN
I	68+96.96	25.30 RT	55N	END
J	68+16.29	21.88 RT	55N	BEGIN TAPER
K	64+45.59	22.07 RT	55N	END TAPER
L	63+67.93	26.25 RT	55N	BEGIN
M	68+95.68	37.26 RT	55N	END
N	68+15.78	33.87 RT	55N	BEGIN TAPER



NOTES:
 1. SEE STAGE 1A SHEETS FOR PIER 9 (SN 082-0322) AND PIER 6 (SN 082-0324) MAINTENANCE OF TRAFFIC MAINTENANCE PLANS FOR REMOVAL LOCATIONS.
 2. SEE PAVEMENT MARKING PLANS FOR REMOVAL LOCATIONS.



USER NAME = pimsarbo	DESIGNED OP	REVISED -	STATE OF ILLINOIS DEPARTMENT OF TRANSPORTATION		SUGGESTED STAGES OF CONSTRUCTION AND TRAFFIC CONTROL - STAGE 1		F.A.I. RTE. 64/998	SECTION 82-1-B-2	COUNTY ST. CLAIR	TOTAL SHEETS 399	SHEET NO. 43
PLDT SCALE = 1/8" = 100'	CHECKED DBM	REVISED -	SCALE: 1" = 50'		SHEET NO. 2 OF 7 SHEETS		FED. ROAD DIST. NO.	ILLINOIS FED. AID PROJECT	CONTRACT NO. 76C76		
PLDT DATE = 8/9/2011	DATE 08-12-11	REVISED -	STA.		TO STA.						