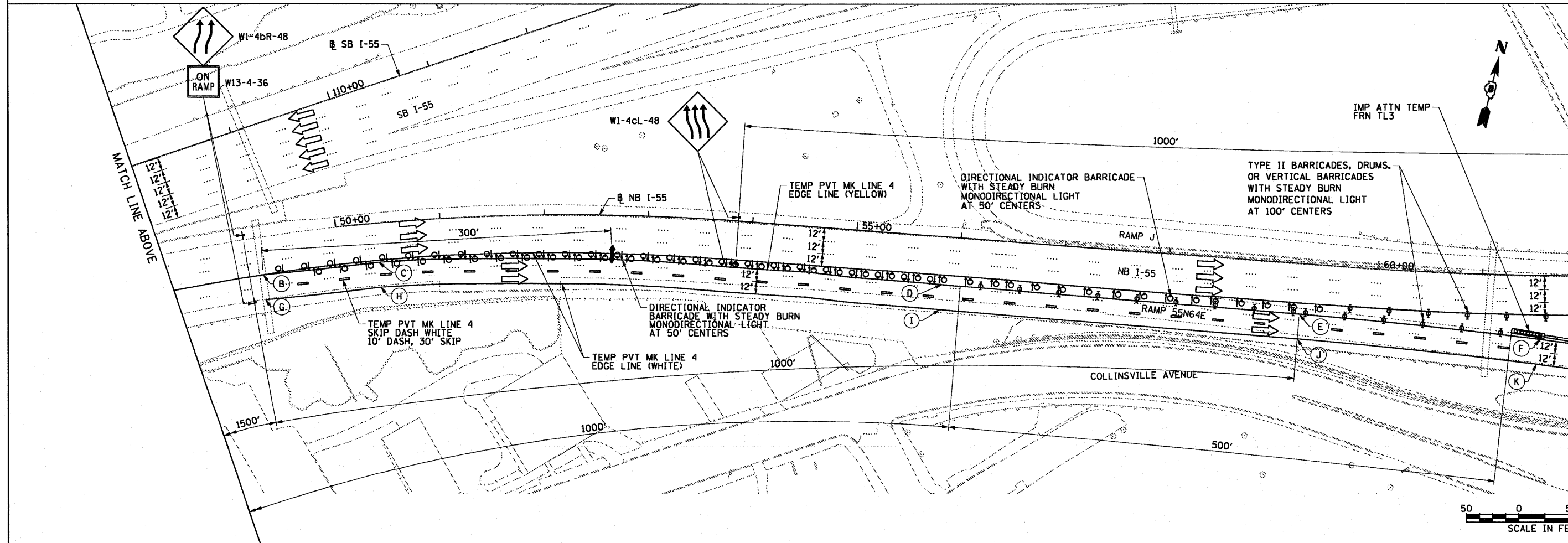
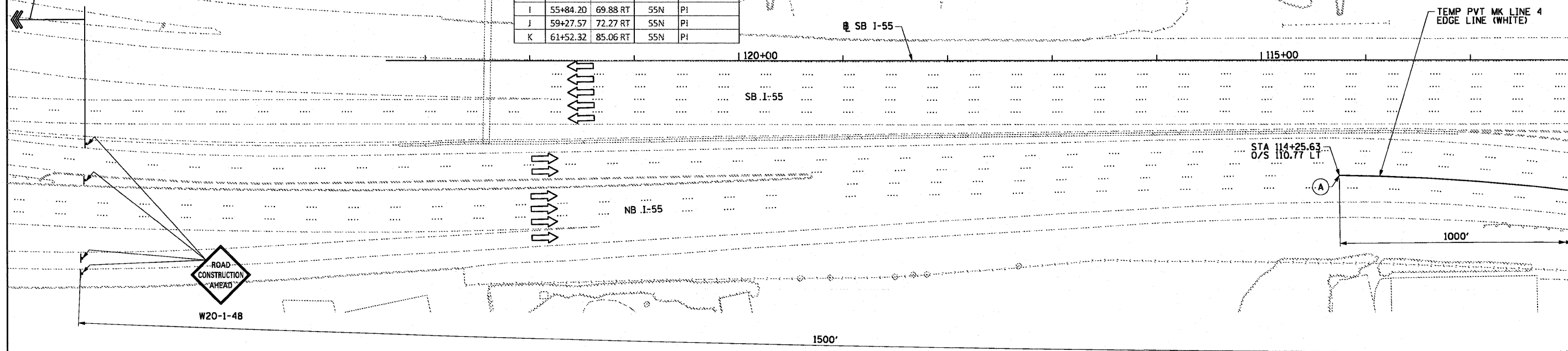


**TEMP PVT MK LINE 4 LAYOUT**

POINT	STA	O/S	BASELINE	NOTES
A	114+25.63	110.77 LT	55S	BEGIN
B	111+14.40	139.07 LT	55S	PI
C	50+37.85	37.75 RT	55N	PI
D	55+84.56	45.88 RT	55N	PI
E	59+27.73	48.27 RT	55N	PI
F	61+54.99	61.21 RT	55N	PI
G	111+19.80	162.46 LT	55S	BEGIN
H	50+37.91	61.76 RT	55N	PI
I	55+84.20	69.88 RT	55N	PI
J	59+27.57	72.27 RT	55N	PI
K	61+52.32	85.06 RT	55N	PI

USE STANDARD 701400 FOR APPROACH  
START OF LANE CLOSURE TAPER



USER NAME = searab	DESIGNED OP	REVISED -	<b>STATE OF ILLINOIS DEPARTMENT OF TRANSPORTATION</b>	<b>SUGGESTED STAGES OF CONSTRUCTION AND TRAFFIC CONTROL - STAGE 1</b>		F.A.I. RTE. 64/998	SECTION 82-1-B-2	COUNTY ST. CLAIR	TOTAL SHEETS 399	SHEET NO. 48	
PLDT SCALE = 1/8" = 100'	DRAWN OP	REVISED -		SCALE: 1" = 50'	SHEET NO. 7 OF 7 SHEETS	STA. TO STA.	CONTRACT NO. 76C76				
PLDT DATE = 6/30/2011	CHECKED DBM	REVISED -		FED. ROAD DIST. NO. ILLINOIS FED. AID PROJECT							
	DATE 07-01-11	REVISED -									

FILE NAME = P:\P60846699\909.CAD\901.Drawings\76C76.Contract\Sheet\CV\1\MDT\081-1-76C76-sht-staging01-07.dgn