



STA 194+30.00 (70CL)
O/S 0.00' LT
DRAINAGE STRUCTURES, TYPE 4
WITH TWO TYPE 20 FRAME & GRATES
RIM: 446.98
SW. INV: 442.33



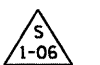
STA 194+30.00 (70CL)
O/S 74.00' RT
PRECAST REINFORCED CONCRETE
FLARED END SECTIONS 12"
INV (12''): 441.62



STA 194+35.00 (70CL)
O/S 74.00' RT
CONCRETE HEADWALL FOR PIPE DRAIN
INV (6''): 441.72



STA 196+30.00 (70CL)
O/S 0.00' LT
DRAINAGE STRUCTURES, TYPE 4
WITH TWO TYPE 20 FRAME & GRATES
RIM: 451.18
SW. INV (12''): 446.77



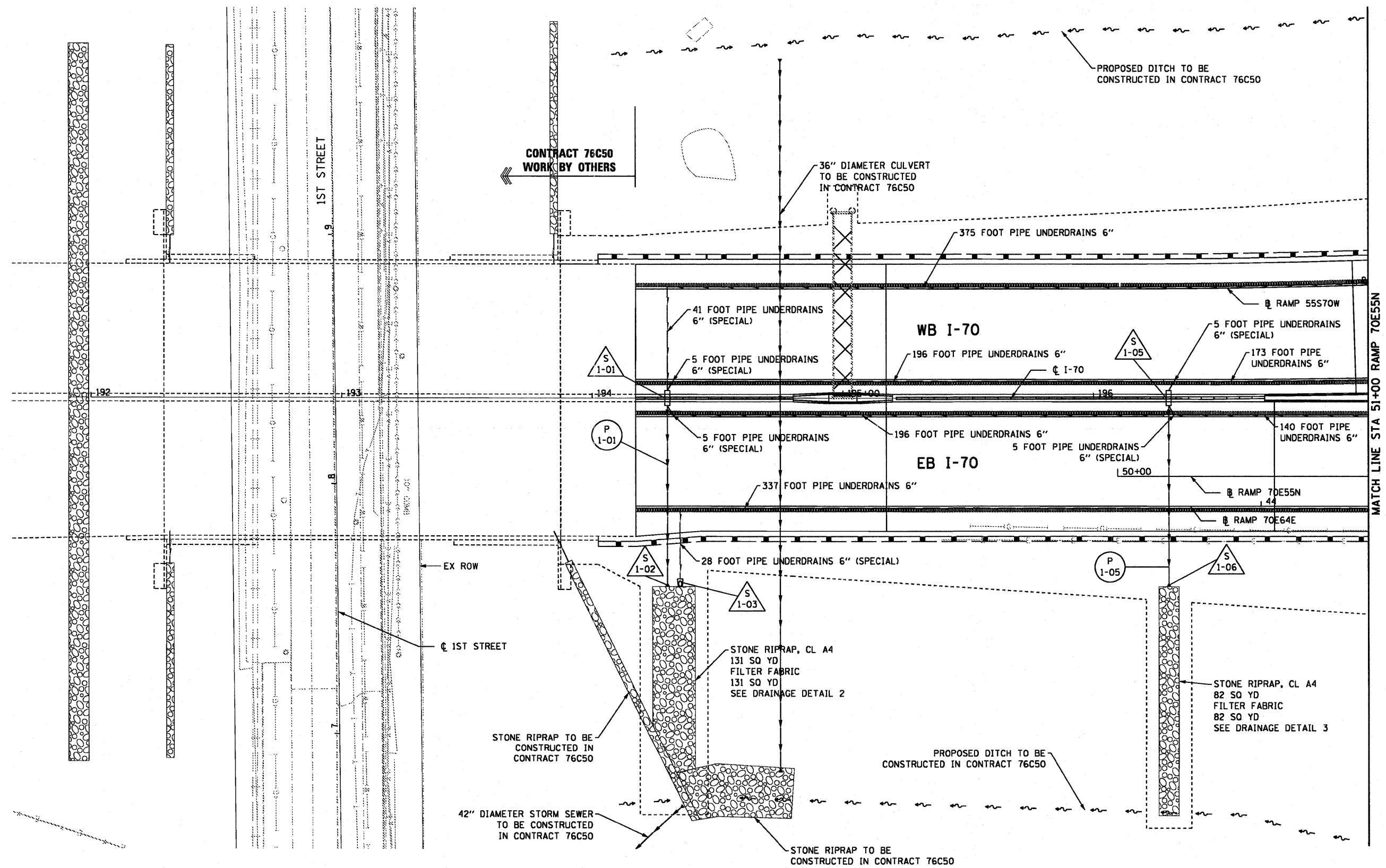
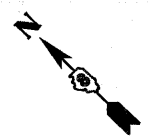
STA 196+30.00 (70CL)
O/S 74.00' RT
PRECAST REINFORCED CONCRETE
FLARED END SECTIONS 12"
INV (12''): 446.06



71 FOOT STORM SEWERS
CLASS A, TYPE 2 12" @ 1.00%
TBF = 8.1 CU YD



71 FOOT STORM SEWERS
CLASS A, TYPE 2 12" @ 1.00%
TBF = 8.1 CU YD



MATCH LINE STA 51+00 RAMP 70E55N

USER NAME = searab	DESIGNED KLK	REVISED -
PLDT SCALE = 48,0000' / 1"	DRAWN KLK	REVISED -
PLDT DATE = 6/30/2011	CHECKED EEY	REVISED -
	DATE 07-01-11	REVISED -

**STATE OF ILLINOIS
DEPARTMENT OF TRANSPORTATION**

DRAINAGE AND UTILITY PLAN

SCALE: 1" = 20' SHEET NO. 1 OF 7 SHEETS STA. 194+17.33 TO STA. 51+00

F.A.I. RTE. 64/998	SECTION 82-1-B-2	COUNTY ST. CLAIR	TOTAL SHEETS 399	SHEET NO. 61
FED. ROAD DIST. NO.		ILLINOIS FED. AID PROJECT		